



# ABG

## AMERICA'S BEST GENETICS

The Source for Pure Genetic Progress

Four International ABG Certificate of Registry forms are displayed, each for a different breed: Landrace, Hampshire, Yorkshire, and Duroc. Each form includes pedigree information, sire and dam details, and various genetic trait data.

**LANDRACE**  
 CSW3 CHRIS 16.6  
 CSW3 BARB 16-12  
 CSW3 FMS PALAN 42-2  
 BTD ALLEN SSP 47-24  
 CCB BARB 65-4  
 CCB BARB 12-2  
 Traits: EPD, Birth, Weaning, etc.

**HAMPSHIRE**  
 WHMA NEW ADVENTURE 441-7  
 ENGLER ADVENTURE 3-1  
 WHM MISS COME TRAV 67-1  
 WHM MISS COME TRAV 57-1  
 WHM MISS COME TRAV 57-1  
 WHM MISS COME TRAV 57-1  
 Traits: EPD, Birth, Weaning, etc.

**YORKSHIRE**  
 CSW JAKE 41-22  
 BTD BEAUTY 17-4  
 BTD BEAUTY M31-4  
 BTD BEAUTY M31-4  
 BTD BEAUTY M31-4  
 BTD BEAUTY M31-4  
 Traits: EPD, Birth, Weaning, etc.

**DUROC**  
 WFD2 HARVESTER 46-1  
 WFD2 HARVESTER 166-1  
 WFD2 EDUEN 61-4  
 WFD2 EDUEN 61-4  
 WFD2 EDUEN 61-4  
 WFD2 EDUEN 61-4  
 Traits: EPD, Birth, Weaning, etc.

THE SOURCE FOR PURE GENETIC PROGRESS



2 America's Best Genetics

**NATIONAL  
SWINE  
REGISTRY**

**PROVEN.  
PROGRESSIVE.  
PUREBREDS.**



**DOUG NEWCOM, Ph.D.**  
Vice President of Genetics & Technology  
765.463.3594  
*newcom@nationalswine.com*

**NATIONAL SWINE REGISTRY**  
2639 Yeager Road  
West Lafayette, IN 47906  
765.463.3594

**[AmericasBestGenetics.com](http://AmericasBestGenetics.com) 3**

**THE SOURCE FOR PURE GENETIC PROGRESS**



## What is America's Best Genetics?

America's Best Genetics (ABG) is a complete genetic program offered to customers of the American purebred swine industry. It is primarily comprised of the commercially-oriented members of the National Swine Registry (NSR), the pedigree association for American purebred Yorkshire, Landrace, Duroc and Hampshire breeds of swine, but also includes industry-leading artificial insemination (AI) and exporting companies. ABG members have been providing Yorkshire, Landrace, Duroc and Hampshire breeding stock to swine producers throughout the world for decades. Breeders representing ABG have been producing and supplying pedigreed, performance-tested U.S. genetics for generations. Our breeders focus on combining years of experience raising breeding stock with modern technical advances to continue the genetic progress vital to their commercial customers' bottom line.

Genetic programs provided by ABG members combine a state-of-the-art genetic evaluation with established, economically-defined genetic lines and long-term, specialized technical support. The genetic diversity of the four breeds can be combined into a genetic program that utilizes each breeds' respective strengths and maximizes the level of heterosis attained in production systems. The maternal attributes of the Yorkshire and Landrace can be combined with the terminal qualities of the Duroc and Hampshire to fit any production situation.

NSR's Swine Testing and Genetic Evaluation System (STAGES™) genetic evaluation program has been facilitating genetic progress across a variety of economically important traits for more than 25 years. The STAGES™ database includes nearly 2 million pedigreed animals with maternal or terminal performance data. In addition to this large, phenotypic database, nucleus animals are genotyped for a variety of markers which have been proven to impact economically important traits. Recent advancements now allow for inclusion of crossbred information to ensure the genetic progress being made in ABG nucleus populations will be realized more quickly in customers' commercial herds. Additionally, ABG members are further developing their nucleus herds into an international population to better serve their global clientele; several ABG members have had customer interactions in over 40 countries. Currently, across-herd, global genetic evaluations are conducted to provide estimated breeding values (EBVs) for AGB nucleus and their global partners' populations.

Not only decades but generations of swine breeding experience are combined with cutting-edge research and state-of-the-art technology to provide the highest levels of genetic progress to enable continued profitability into the future for customers of ABG members.

### 4 America's Best Genetics

# Joint-Venture/Membership Opportunities

Members of ABG have developed successful joint-venture partnerships around the world with progressive, forward-thinking breeders. These relationships allow foreign customers the ability to stay connected to the STAGES™ genetic evaluation system and further enhance their ability to make genetic progress. In order to obtain membership in NSR and have access to the STAGES™ system, these requirements must be met:

- Long-term joint-venture partnership with American NSR/ABG Member
- Annual membership/maintenance fee – per breed
- Participate in “whole herd reporting”
- Abide by NSR Standard Code of Ethics
- Nucleus and GGP breeding stock must be sourced from NSR pedigreed breeding stock

Benefits included in your annual membership/maintenance fee include:

- Independent third-party verification of parentage, breed purity/breed identity
- Direct access to the STAGES™ genetic evaluation system results
  - » International genetic evaluation
  - » Online Support Tools
    - Open system with rankings searchable online
    - Access to animal rankings and current EBV/Indexes (trait leader lists and EPD search functions)
    - Mating planner – to determine optimal matings based on genetic merit and inbreeding
    - Results reporting site to access your own data
- Access to NSR geneticist and industry/university professionals
  - » May be additional fees depending on level of access required

Benefits of membership in the NSR that are fee based – above and beyond the annual membership/maintenance fee – include:

- Litter recording
- Pedigree printing
- Commercial Test Herd Terminal Genetic Evaluation
- Commercial Maternal Genetic Evaluation
- DNA testing for HAL1843 on your animals
- Parentage verification

NSR is able to offer its members, international partners and their customers a level of technical service and support like never before. For further information, please do not hesitate to contact the staff at the NSR or one of the members of ABG.

# PUREBRED TERMINAL SIRE

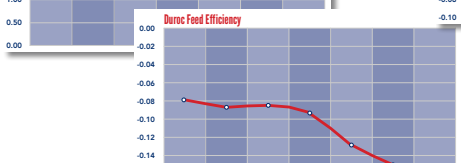
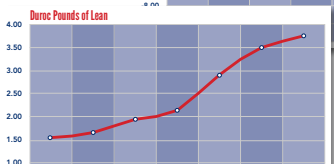
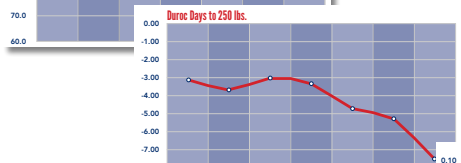
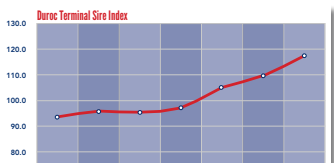


## DUROC

### THE WORLD'S TERMINAL SIRE

*The standard for growth, robustness and muscle quality*

All Duroc populations within America's Best Genetics are subject to comprehensive performance testing programs for growth, efficiency, composition and meat quality.



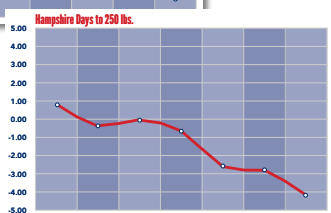
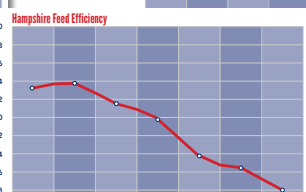
## HAMPSHIRE

### AMERICA'S MEAT & MUSCLE SIRE

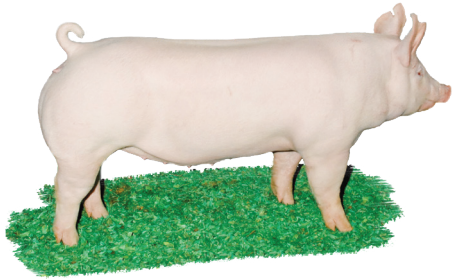
*Muscling and leanness in an efficient package*

When used as a terminal sire, Hampshires offer the most effective method to increase primal yield, which leads to an increased premium in packer grids.

When incorporated into a commercial sow base – Hampshires have a proven record of increased durability and robustness, while contributing to superior carcass composition of the commercial market hog.



# PUREBRED MATERNAL BREEDS

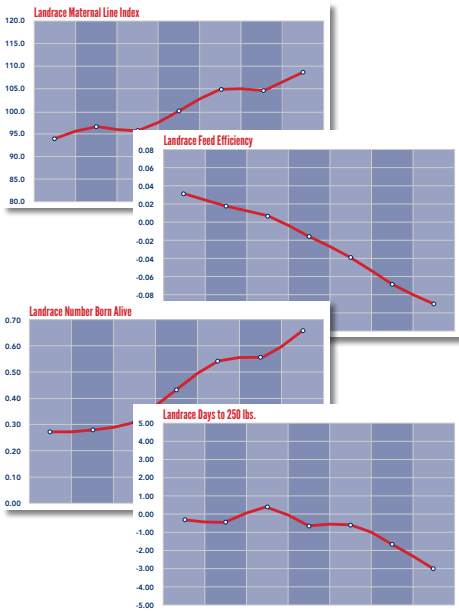


## LANDRACE

### THE WORLD'S MATERNAL BREED

*Maximum maternal efficiency*

Swine producers seeking to produce a commercial breeding female with superior maternal ability through superb fertility, prolificacy, and milking ability must utilize Landrace as a component breed. Research has shown it is not only the number of pigs weaned, but the quality of those pigs that means profit to swine producers: the American Landrace is at the top in terms of milking ability.

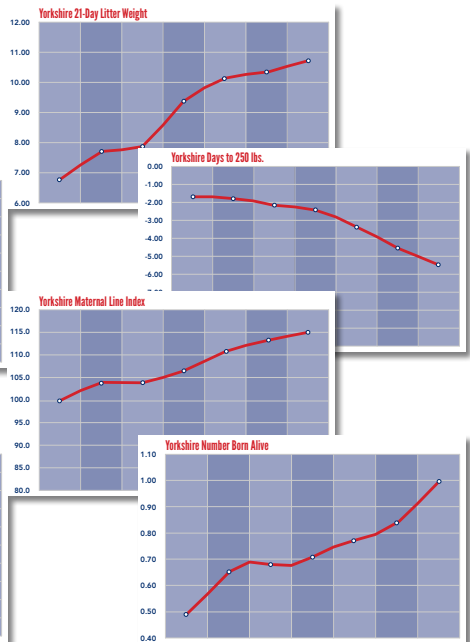


## YORKSHIRE

### AMERICA'S COMPLETE MATERNAL BREED

*Superior lifetime productivity with added growth and leanness capability*

Not only does the American Yorkshire excel in maternal efficiency via superior lifetime sow productivity and excellent prolificacy, but it also provides superior growth and efficiency in the commercial market hogs.



THE SOURCE FOR PURE GENETIC PROGRESS

# NATIONAL SWINE REGISTRY

# PROVEN. PROGRESSIVE. PUREBREDS.

A performance pedigree from the NSR is more than a piece of paper – it's a symbol of integrity. It documents a product backed by superior genetics and predictable performance. It's the life-blood of an entire industry, making it possible for you to have the leadership, research programs, services and support the membership and their customers have from the National Swine Registry. If you purchase seedstock for your production system, you owe it to yourself to ask for the performance pedigree. Why not take advantage of more than 100 years of genetic selection and performance documentation?

**INTERNATIONAL ABC CERTIFICATE OF REGISTRY**

Animal: **CCSW1 CHRIS 10-6** (Date of Birth: 10/15/2007, Sex: M, Weight: 128.0)

Parents: **CCSW1 BARB 16-12** (Date of Birth: 12/28/2002, Sex: F, Weight: 141.0) x **BTR ALKEN SSP 87-11** (Date of Birth: 06/09/04, Sex: M, Weight: 123.9)

Grandparents: **CCSW1 BARB 65-4** (Date of Birth: 05/15/02, Sex: F, Weight: 141.0) x **CCSW1 BARB 12-2** (Date of Birth: 07/29/02, Sex: F, Weight: 141.0)

Owner: **FORNER FARM**, 302 E EVERETT FORNER, 702 S INDIAN LANE ROAD, RICHARDS, MO 64778-9710

Traits	EPD	Traits	EPD	Traits	EPD
Back Fat	0.96	Days to 100 lbs	-0.87	Terminal Sire Index	0.00
Lean Meat %	0.32	Days to 150 lbs	0.87	Number Born Alive	0.00
Number Weaned	0.27	21 Day Litter Weaning Weight	-0.08	Number Weaned	0.00
21 Day Litter Weaning Weight	0.35	Feed Efficiency	-0.71	21 Day Litter Weaning Weight	0.00
Days to 100 lbs	0.62	Days to 150 lbs	0.71	Feed Efficiency	0.00
Days to 150 lbs	137.4	Days to 200 lbs	155.7	Days to 100 lbs	114.8

The only NSR approved Certificate of Registry

## STAGES™ Swine Testing and Genetic Evaluation System

No genetic program is complete without a successful genetic evaluation system – STAGES™ meets this need for the American purebred nucleus. STAGES™ has been developed and maintained for over 25 years by National Swine Registry staff geneticists in cooperation with leading swine geneticists at universities such as Iowa State University, Michigan State University, North Carolina State University and Purdue University.

The STAGES™ genetic system is designed to provide the tools necessary for members of America's Best Genetics and their customers to achieve optimal genetic gain in a number of economically important traits. The traits included in the multi-trait genetic analysis include:



### CARCASS AND EFFICIENCY TRAITS:

- Backfat
- Days to 113.4 kg
- Kilograms of Lean
- Feed Efficiency

### MEAT QUALITY TRAITS:

- Color – Minolta L\*
- Marbling Score
- 24-hour pH

### MATERNAL EFFICIENCY TRAITS:

- Number Born Alive
- Number Weaned
- 21 Day Litter Weaning Weight
- Litter Birth Weight
- Wean to Estrus Interval

### BIO-ECONOMIC INDEXES:

- Sow Productivity Index (SPI)
  - » Number Born Alive
  - » Number Weaned
  - » 21 Day Litter Weaning Weight
- Maternal Line Index (MLI)
  - » Number Born Alive
  - » Number Weaned
  - » 21 Day Litter Weaning Weight
  - » Days to 113.4 kg
  - » Feed Efficiency
- Terminal Sire Index (TSI)
  - » Days to 113.4 kg
  - » Feed Efficiency



U.S. DUROC

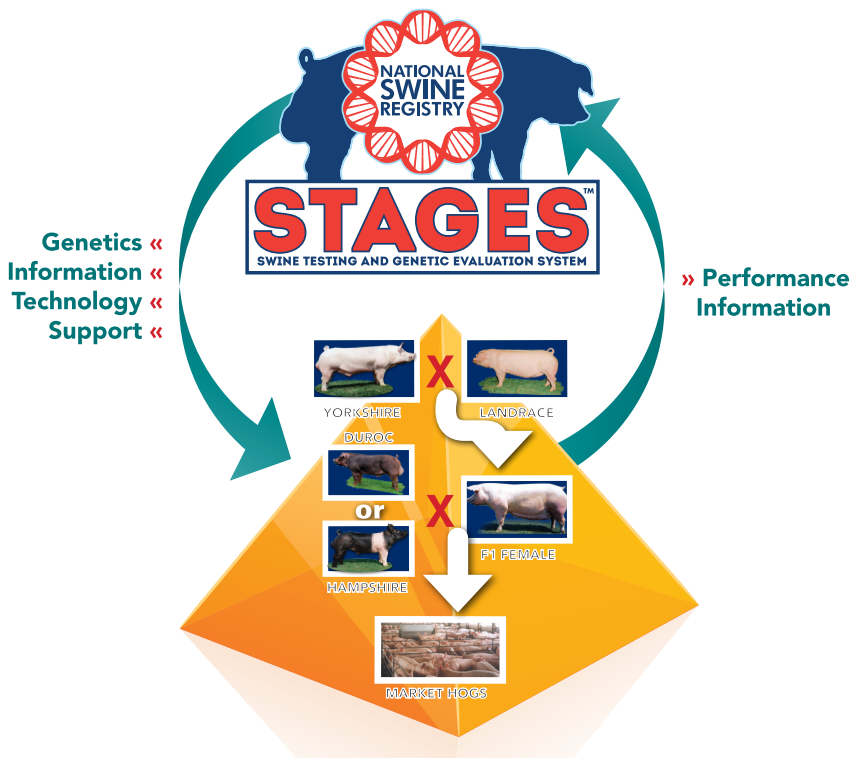
U.S. HAMPSHIRE

U.S. LANDRACE

U.S. YORKSHIRE



More than 2,000,000 records



## STAGES™ by the numbers

1985 – STAGES™ was first introduced to the pork industry

260 – nightly STAGES™ genetic predictions per year (BLUP estimations are run every business day for the latest in genetic-improvement tools.)

2,000,000 – Animal records submitted

by NSR breeders for BLUP analysis

15 – Individual EPDs and indexes calculated nightly in STAGES™ for use by breeders and commercial pork producers

110 + – Countries accessing the STAGES™ website in the past five years

THE SOURCE FOR PURE GENETIC PROGRESS

# MEMBER FIRMS



📍 5535 Cedar Ridge Lane, Red Bud, IL 62278  
☎ 618-473-2325  
@ [angie@cedarridgegenetics.com](mailto:angie@cedarridgegenetics.com)  
🌐 [www.cedarridgegenetics.com](http://www.cedarridgegenetics.com)

## CEDAR RIDGE FARMS

### FREDDIE GROHMAN, PRESIDENT

Cedar Ridge Farms is an independent purebred operation that was established in 1954. Owned and operated by a six-brother team, Cedar Ridge Farms is one of the largest recorders and exporters of purebred Landrace, Yorkshire, Duroc, and Hampshire in the U.S. The Cedar Ridge operation consists of 1,900 purebred, Landrace, Yorkshire, Duroc, and Hampshire sows, 150 boars located in 3 studs, and 1,200 acres of crop production. Cedar Ridge Farms has exported genetics to more than 40 countries in the past 40 years and attributes that long term success to a selection pattern that has an appropriate balance of genotype/ data with phenotype and functionality.

.....



## Compartment's Boar Store, Inc.

📍 45198 400th St., Nicollet, MN 56074  
☎ 507-246-5012  
@ [chris.compartment@gmail.com](mailto:chris.compartment@gmail.com)  
🌐 [www.compartmentsoarstore.com](http://www.compartmentsoarstore.com)

## COMPART'S BOAR STORE

### CHRIS COMPART, CO-OWNER

Compartment's is a family operation where customers deal with family members who are involved in the day-to-day management of the hogs. Their operation has a purebred base of Duroc, Yorkshire and Landrace in their 600 sow nucleus and 120-head boar stud, along with 1,300 F1 sows. For more than 50 years, domestic customers have relied on Compartment's for practical, sound, performance-oriented breeding stock. In the 1970's, Compartment's expanded into the international market and since then have exported to 10 different countries.

.....



📍 7963 N. Delaware County Rd., Albany, IN 47320  
☎ 800-843-8666  
@ [clyde@shaffergenetics.com](mailto:clyde@shaffergenetics.com)  
🌐 [www.shaffergenetics.com](http://www.shaffergenetics.com)

## SHAFER GENETICS

### CLYDE SHAFER JR., PRESIDENT

Shaffer Genetics is a large three-generation swine breeding stock firm that has been involved in the purebred business since 1965. Initially started with two Duroc sows, the operation has evolved into a successful family operation of 1,200 purebred Duroc, Landrace and Yorkshire sows, Shaffer West Boar Stud with 210 boars, IGTC Boar stud in Iowa with 60 boars and 1,800 acres of crop production. Internationally Shaffer Genetics has over 3,000 registered sows in China and two boar studs. Shaffer Genetics provides monthly genetic and production services to Asian customers.

# MEMBER FIRMS



## WALDO GENETICS

### MAX WALDO, OWNER

Since 1895, Waldo Farms has focused their purebred seedstock operation on superior, performing genetics. Waldo genetics combine unsurpassed lean growth with meat quality and units of pork per sow per year. Their Duroc herd is ranked at the top of America's STAGES™ program, and the Yorkshire and Landrace herds index in the top 1 percent. Waldo Farms has sold seedstock into 49 states and exported to more than 30 countries. They have joint venture partners in Europe, the Philippines and China, and they have become major suppliers of boars for commercial studs in the U.S., China, the Philippines, England, Vietnam and South Korea.

📍 P.O. Box 8, DeWitt, NE 68341  
☎ 402-683-5225  
@ [information@waldogenetics.com](mailto:information@waldogenetics.com)  
🌐 [www.waldogenetics.com](http://www.waldogenetics.com)



## TRULINE GENETICS

### EVERETT FORKNER, PRESIDENT

Forkner Farms Inc. is a family-owned and operated crop and livestock breeding business committed to excellence in all phases of production. It consists of Forkner Farms (Crop Production), Truline® Genetics (Swine Breeding), Truline® Premium Pork (Pork Meat Products) and Truline® Maines (Cattle Breeding). Truline Genetics is celebrating more than 50 years in the swine breeding business and has placed purebred swine seedstock in 48 states throughout North America and in more than 25 countries worldwide.

📍 9282 East Indian Line Rd., Richards, MO 64778  
☎ 417-549-0666  
@ [eforktlg@gmail.com](mailto:eforktlg@gmail.com)  
🌐 [www.trulinegenetics.com](http://www.trulinegenetics.com)



## SWINE GENETICS INTERNATIONAL

### MIKE DORAN, CHIEF OPERATING OFFICER

Swine Genetics International has a 29-year history of supplying high-quality purebred swine genetics worldwide through live animals, as well as liquid and frozen semen. Currently, Swine Genetics International houses approximately 170 of the most elite purebred boars in the world. SGI has assisted swine breeders in more than 40 countries in advancing their individual genetic progress through semen or live breeding animals.

📍 30805 595th Ave., Cambridge, IA 50046  
☎ 800-247-3958  
@ [mdoran@swinegenetics.com](mailto:mdoran@swinegenetics.com)  
🌐 [www.swinegenetics.com](http://www.swinegenetics.com)

# Member Firms



**CLAYTON**  
**AGRI-MARKETING, INC.**

📍 2507 Industrial Drive, Jefferson City, MO 65109  
☎ 573-659-8560  
@ [info@claytonagri-mktg.com](mailto:info@claytonagri-mktg.com)  
🌐 [www.claytonagri-mktg.com](http://www.claytonagri-mktg.com)

## CLAYTON AGRI-MARKETING

### TONY CLAYTON, PRESIDENT

Clayton Agri-Marketing Inc. has been one of the leading exporters of breeding swine and technology from the U.S. to Asia since 1996. Clayton Agri-Marketing Inc. has exported thousands of breeding pigs to several Asian countries and has assisted many breeding companies in Asia to develop highly efficient breeding programs. Mr. Clayton has been in the livestock export industry since 1987 and works in more than 50 different countries. Besides exporting swine, Clayton Agri-Marketing Inc. also exports beef and dairy cattle, goats, horses and sheep.

.....



📍 28940 Dutch Lane, Washington, IL 61571  
☎ 309-444-4195  
@ [curt@zehrffarms.com](mailto:curt@zehrffarms.com)  
🌐 [www.zehrffarms.com](http://www.zehrffarms.com)

## ZEHR FARMS

### CURT ZEHR, OWNER

Zehr Farms is a fifth generation family farm located near Washington, Illinois. They have been producing superior Duroc genetics selected for economically important production traits and eating quality for more than 50 years. Zehr Farms Premium Pork is their branded meat sales division that is the result of this genetic breeding program. Their mission is to provide genetics that will excel in any type of environment and produce pork that will satisfy the highest standards of eating quality.

.....



Global Swine Exchange of Iowa, Ltd.

📍 1609 Amherst Dr., Ames IA, 50014  
☎ 515-290-0013  
@ [alllutz@aol.com](mailto:alllutz@aol.com)  
🌐 [www.globalswine.com](http://www.globalswine.com)

## GLOBAL SWINE EXCHANGE OF IOWA

### MONTE LUTZ, PRESIDENT

Global Swine Exchange of Iowa, Ltd., (GSEI) has exported breeding swine to more than 40 countries in the past four decades. Since they were founded in 1977, the staff of GSEI has called upon their background in high-performance, purebred swine genetics to assist producers to select and export genetics worldwide. Today, Mr. Lutz still exports around the world and is responsible for three of the four largest shipments of swine exported anywhere in the world. GSEI has the pleasure of collaborating with Iowa State Doctoral Graduate, Dr. Young Chul Jung of Jung PC Institute, to further assist with client's needs.

# Member Firms



## ISLER GENETICS

**SCOTT ISLER, CO-OWNER**

Isler Genetics provides ultimate genetic foundations that give breeders the advantage of leanness and muscle as well as productive breeders. Their business is selling commercial boars and gilts that will be profitable for the purchaser.

.....

📍 1748 Prospect Mount Vernon Rd. W.  
Prospect, OH 43342

☎ 740-262-2850

@ [scottisler@islergenetics.com](mailto:scottisler@islergenetics.com)

🌐 [www.islergenetics.com](http://www.islergenetics.com)



## AG WORLD INTERNATIONAL

**JACOB D. CLUVER, CHIEF EXECUTIVE OFFICER**

Ag World is a family business created by Bruce Cluver in 1977 and has been actively exporting to China since the early 1980's. In 2011-2012, Ag World was the world's leading exporter of swine into China. We have exported swine, dairy and beef cattle, goats, sheep, horses, rabbits and exotics to 93 countries. The company is now run by Bruce's son, Jacob Cluver and our China operations are run by XieJi "Chuck."

.....

📍 2 Ashling Court, Bloomington, IL 61704

☎ 309-662-9601

@ [agworld@agwic.com](mailto:agworld@agwic.com)

🌐 [www.agwic.com](http://www.agwic.com)

*Duroc*



*Hampshire*



The power of the pedigree

**WORLDWIDE**



*Landrace*



*Yorkshire*



DOUGLAS NEWCOM, Ph.D. • V.P. of Genetics & Technology

National Swine Registry • 2639 Yeager Road, West Lafayette, IN 47906

Office: 765.463.3594 • Cell: 765.421.1440

[newcom@nationalswine.com](mailto:newcom@nationalswine.com)

**AmericasBestGenetics.com**