

DECEMBER 2012 ❖ FEMALE FOCUS ISSUE

Seedstock EDGE m a g a z i n e

The official publication of the National Swine Registry

Two Families – One Dream

Long-lasting Females

You be the Judge



SHIPLEY

SWINE GENETICS

Like us on:
facebook®

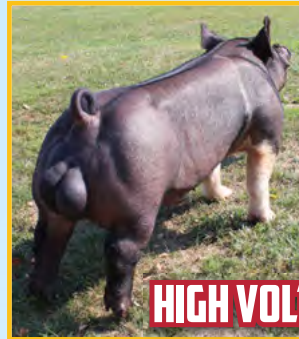
8086 Marion Road, Newark, OH 43055
Cell: 740.404.5048
Fax: 740.745.2913



PIT BULL



THE MONSTER



HIGH VOLTAGE



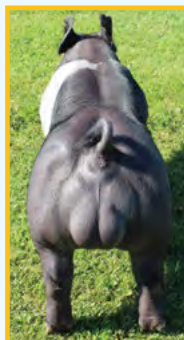
PIONEER



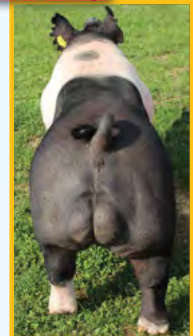
SHOTGUN



SHOCKER



**Check
out our
newest
Exotic
boars!**



All of us at Shipley Swine Genetics join in saying Thank You and wishing you a

Merry Christmas
and a prosperous new year!



Joslyn

Jacey



Designed by
Seedstock
EDGE

www.shipleywine.com  866.376.8986

Mission Statement



"To enhance the value, influence and image of purebred Durocs, Yorkshires, Hampshires and Landrace and to provide an effective medium for National Swine Registry members and swine breeders to promote their product."

Seedstock EDGE (ISSN 1079-7963) is published monthly except bi-monthly in January/February, April/May and October/November by the National Swine Registry (American Yorkshire Club, Hampshire Swine Registry, United Duroc Swine Registry and the American Landrace Association). Subscription rates: (U.S.) \$25/yr., \$60/3 yrs., \$60/yr. 1st class; (Foreign) \$150/yr. Office of Publication is *Seedstock EDGE*, 2639 Yeager Road, West Lafayette, IN 47906. Phone: 765.463.3594. Printing is by Sutherland Companies, Montezuma, Iowa. Periodicals postage paid at Lafayette, Ind., and at additional mailing offices. All unsolicited articles, letters, photographs and other contributions of any type whatsoever shall become the sole property of *Seedstock EDGE*, which shall have the sole right to determine whether to publish any such contribution. *Seedstock EDGE* shall have the right to edit, as it shall in its sole discretion deem appropriate, any such contribution which it publishes. *Seedstock EDGE* shall have the right to refuse any photos used for promotion and advertising that show evidence of image enhancement and shall have no responsibility or obligation for the return of any such unsolicited contributions. POSTMASTER: Send address changes to *Seedstock EDGE*, 2639 Yeager Road, West Lafayette, IN 47906.

Seedstock EDGE Staff

Editorial

Mike Paul

Executive Editor

mike@nationalswine.com

Jen Gillespie

Editor

jen@nationalswine.com

Katie Maupin

Assistant Editor

katie@nationalswine.com

Stephen Weintraut II

Creative Director

steve@nationalswine.com

Advertising

Brian Arnold

Vice President of Member Outreach &

Youth Development

765.427.1186

Ralph Doak

Field Representative

765.427.9910

Michael Lackey

Field Representative

765.427.3733

Brian Anderson

Field Representative

620.515.3348



2639 Yeager Road

West Lafayette, IN 47906

765.463.3594 • 765.497.2959 fax

Ads: seedstockedge@nationalswine.com

General: nsr@nationalswine.com

www.nationalswine.com

On the Cover

This Hampshire litter proves the value of a brood sow.

Photo by *Seedstock EDGE* staff

NSR STAFF

765.463.3594

Chief Executive Officer

Mike Paul • Ext. 107

Vice President of Member Outreach &

Youth Development

Brian Arnold • Ext. 106

Vice President of Global Technical Service

Dr. Justin Fix • Ext. 116

Administrative Assistant

Robin Lucas • Ext. 103

Software Developer

Adam Dian • Ext. 104

Director of Marketing & Communications

Jen Gillespie • Ext. 113

Assistant Editor

Katie Maupin • Ext. 111

Creative Director

Stephen Weintraut II • Ext. 118

Director of Junior Activities

Cally Hass • Ext. 109

Junior Activities Coordinator

Torie Schwartz • Ext. 108

Administrative Secretary

Lisa Kennedy • Ext. 105

Data Entry Specialist

Rhonda Eller • Ext. 101

Duroc Secretary

Jessica Goyette • Ext. 100

Hampshire/Landrace/DNA Secretary

Whitney Hosier • Ext. 102

Field Representative

Ralph Doak • 765.427.9910

Field Representative

Michael Lackey • 765.427.3733

Field Representative

Brian Anderson • 620.515.3348

BOARD OF DIRECTORS

NSR EXECUTIVE COMMITTEE

Chairman

Jim Grimm, Iowa • 563.637.2351

Vice Chairman

Dave Kilmer, Ind. • 574.943.3239

Carl Stein, Mo. • 816.633.4343

Bret Goff, Ind. • 765.502.0304

Terry Shaffer, Ind. • 765.789.6298

Wayne Huinker, Iowa • 563.380.1372

Jay Winter, Texas • 806.892.3089

Scott Lawrence, Ind. • 260.564.0595

Garry Childs, Ga. • 229.378.0749

Ron Iverson, Iowa • 641.236.3713

DUROC

President

Bill Range, Ill.

Vice President

Cody McCleery, Texas

Term Expires 2012

*Carl Stein, Mo.

Terms Expire 2013

*Bret Goff, Ind.

Ron Nelson, S.D.

Bill Range, Ill.

Term Expires 2014

John Huinker, Iowa

*Cody McCleery, Texas

Steve Rodibaugh, Ind.

LANDRACE

President

Scott Lawrence, Ind.

Vice President

Lance Westcamp, Ohio

Terms Expire 2012

Rachelle Bailey, Calif.

Scott Lawrence, Ind.

Terms Expire 2013

Mike Grohmann, Ill.

*Tom Knauer, Wis.

Lance Westcamp, Ohio

Terms Expire 2014

Randy Bowman, Ill.

Chris Compant, Minn.

HAMPSHIRE

President

Ron Iverson, Iowa

Vice President

Dave Kilmer, Ind.

Term Expires 2012

*Ron Iverson, Iowa

Terms Expire 2013

Jesse Heimer, Mo.

*Ben Moyer, Ohio

Jay Winter, Texas

Terms Expire 2014

*Dave Kilmer, Ind.

Mark Boe, Ill.

Brian Hines, Mich.

YORKSHIRE

President

Wayne Huinker, Iowa

Vice President

Neil Planalp, Ind.

Terms Expire 2012

*Jim Grimm, Iowa

*Larry Moore, Okla.

Terms Expire 2013

*Wayne Huinker, Iowa

Tracy Lorenzen, Ill.

Terms Expire 2014

*Neil Planalp, Ind.

Garry Childs, Ga.

Brady Crone, Ind.

*denotes second term

Ad Dropout Policy

To maintain the advertising integrity of *Seedstock EDGE*, the late ad drop policy developed by the NSR Executive Committee will be upheld by the NSR Department of Marketing & Communications. If an advertiser reserves advertising space in *Seedstock EDGE*, he or she has until three days after the ad deadline to recall the advertising space. If an ad is pulled after that time, the late ad drop policy will apply. On the first occurrence, the advertiser will receive a written explanation of the policy. On any following occurrences, the advertiser will be charged half the cost of the reserved ad space.

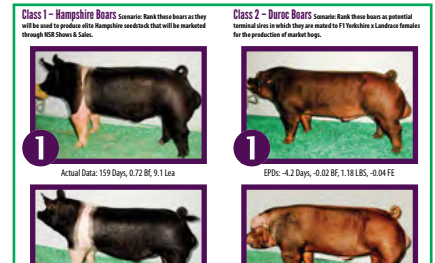
Features



22
BOLO & Company
by Katie Maupin



28
Make Her Last
by Katie Maupin



34
2013 Picture Judging Contest

Editorial

10
Open Mike
by Mike Paul

16
FYI

12
Youth View
by Cally Hass

41
Ringside

14
Prospects from the Pen
by Jen Gillespie

69
Blast from the Past

Shows and Sales

42
NJSA Eastern Regional

50
State Fair of Texas

48
Tennessee State Fair

52
**Keystone International
Livestock Exposition**

49
Cow Palace

Reference

8
**Seedstock EDGE 2013
Advertising Rates & Schedule**

79
Seedstock EDGE Subscription Form

56
Seedstock Source

80
Index to Advertisers

78
Datebook



Home of CHAMPIONS More Champions, More Often!



Reserve Barrow Overall &
Champion Duroc Barrow,
2012 NJSA Eastern Regional
Sired by Big Buck



Grand Champion Gilt Overall &
Champion Yorkshire Gilt,
2012 NJSA Southwest Regional
Sired by Red Dirt



Reserve Hampshire Barrow,
2012 NJSA Eastern Regional
Sired by Wimbledon



Champion Landrace Barrow,
2012 NJSA Eastern Regional
Sired by Apollo



Champion Duroc Barrow,
2012 NJSA Southwest Regional
Sired by Big Buck



Reserve Division Champion,
2012 Georgia National
Sired by Major Stick



Champion Chester Barrow,
2012 National Barrow Show
Sired by Classic ATM



Reserve Duroc Gilt,
2012 Georgia National
Sired by Fusion



Reserve Landrace Gilt,
2012 NJSA Eastern Regional
Sired by Apollo



Champion Sr. Hampshire Boar,
2012 Indiana State Fair
Sired by Wimbledon

Watch our website for information on December and January litters!



Terry: 765.730.1031 • Aimee: 765.730.1666 • Lynsee: 765.717.9924
Bradley: 765.414.7485 • shaffer@shaffergoldrush.com

888.690.2022 • SHAFFERGOLDRUSH.COM

Designed by
Seedstock
EDGE

It's a whole new game.

new year • new look • new structure • new results

OUR GOAL is your success!



**BUYER'S
CHOICE
auction**

Upcoming Sales

- » Stewart's Duroc Farm and Stein & Stewart Genetics Bred Gilt Sale • Dec. 3
- » Penner's Bound For Glory Bred Gilt Sale • Dec. 3-4
- » IN Duroc Breeders – A League of Their Own Bred Gilt Consignment Sale • Dec. 4-5
- » Olsen's Online Bred Gilt Sale • Dec. 5
- » Nelson Bros & Spring Creek Genetics Online Bred Gilt Sale #3 • Dec. 5-6
- » OBC Genetics/Eddie Robinson Bred Gilt Sale • Dec. 10

Book your sale today.

Contact: Katie Maupin (o) 765.463.3594 (c) 765.427.7741

NSR-BuyersChoiceAuction.com



- * **Seedstock EDGE** is your opportunity to reach a targeted, purebred swine audience in the premier publication of the showpig industry!
- * Check below for advertising deadlines, mail dates and **Seedstock EDGE** distribution for 2013!
- * For more information or to book advertising, contact the **Seedstock EDGE** staff at seedstockedge@nationalswine.com or 765.463.3594.



January/February 2013

Advertising copy due: Nov. 27, 2012

Mail date: Jan. 8, 2013

Delivers to Winter Type Conference/NJSA Southeast Regional, Pennsylvania Farm Show, San Antonio Stock Show, Fort Worth Stock Show, National Western Stock Show

March (Spring Showpig Issue) 2013

Advertising copy due: Feb. 6, 2013

Mail date: Feb. 27, 2013

Bonus mailing to FFA chapters in Midwest
Delivers to Southwest Type Conference, NJSA Western Regional, Houston, Oklahoma Youth Expo

April/May (International Issue) 2013

Advertising copy due: March 22, 2013

Mail date: April 17, 2013

Delivers to NSR Weanling Pig Extravaganza

June (Youth Issue) 2013

Advertising copy due: May 8, 2013

Mail date: June 3, 2013

Bonus mailing to all NJSA members
Delivers to World Pork Expo

July 2013

Advertising copy due: June 13, 2013

Mail date: July 1, 2013

Delivers to NSR Summer Spectacular

August (Boar Stud Issue) 2013

Advertising copy due: July 11, 2013

Mail date: Aug. 5, 2013

Delivers to NJSA Southwest Regional, State Fairs across the Midwest

September (Fall Showpig Issue) 2013

Advertising copy due: Aug. 22, 2013

Mail date: Sept. 9, 2013

Bonus mailing to FFA chapters in Southwest
Delivers to National Barrow Show, NJSA Eastern Regional, Keystone International Livestock Exposition, Tulsa State Fair, State Fair of Texas

October/November 2013

Advertising copy due: Sept. 18, 2013

Mail date: Oct. 11, 2013

Delivers to American Royal, NAILE

December (Female Focus Issue) 2013

Advertising copy due: Oct. 24, 2013

Mail date: Nov. 19, 2013

Delivers to NSR Fall Classic, Western All Breeds Show

January/February 2014

Advertising copy due: Dec. 5, 2013

Mail date: Jan. 8, 2014

Delivers to Winter Type Conference/NJSA Southeast Regional, Pennsylvania Farm Show, San Antonio Stock Show, Fort Worth Stock Show, National Western Stock Show

Seedstock EDGE m a g a z i n e

Ad Rates 2013

2013 Breeder Ad Rates

STANDARD RATES – Non-showpig issues
(Jan./Feb., April/May, June, July, Aug., Oct./Nov., Dec.)

	BW	2-color	4-color
1/4 page	\$100	\$175	N/A
1/2 page	\$225	\$300	\$400
1 page	\$375	\$450	\$650
2 pages	\$700	\$850	\$1250

SHOWPIG ISSUE RATES – Spring & Fall showpig issues
(March & Sept.)

	BW	2-color	4-color
1/4 page	\$150	\$225	N/A
1/2 page	\$275	\$350	\$450
1 page	\$425	\$500	\$700
2 pages	\$800	\$950	\$1350

SE Multi-Ad Annual Contract

6 or more pages of advertising per year

1 page	\$600
2 pages	\$1150

SE Loyal Advertiser Annual Contract

Advertise in all 9 issues of SE

1 page	\$575
2 pages	\$1100

2013 Business Ad Rates

STANDARD BUSINESS RATES – All issues

	BW	2-color	4-color
1/4 page	\$275	\$350	N/A
1/2 page	\$400	\$475	\$575
1 page	\$550	\$625	\$825
2 pages	\$1050	\$1200	\$1600

SE Multi-Ad Business Contract

6 or more pages of advertising per year

1 page	\$750
2 page	\$1450

SE Loyal Business Annual Contract

Advertise in all 9 issues of SE

1 page	\$725
2 page	\$1400

*Contracted ads must be full-page, full-color





Open Mike

Mike Paul
CEO, National Swine Registry

Interest Bearing Account

When we invest our time, talents and money into a project, we hope we will get a good return on our investment.

I think back to the mid-'90s, and there was only talk about a junior swine association. Many members and other swine industry enthusiasts referred to the outstanding youth programs offered by other specie groups, and how great it would be if a similar program was available to young people in our industry. After the NSR staff met early in 1998, it was decided to hold a junior activity that summer.

The first attempt at a junior activity was in conjunction with the Summer Type Conference, which was scheduled to be held the second week of July at the Tippecanoe County Fairgrounds in Lafayette, Ind. The NSR was blessed that summer to have two interns, Jennifer 'Hotchkiss' Shike and Daryl Real, that were actively involved in other junior programs. They grabbed the bull by the horns and put this event together. With no idea what numbers to expect for their first event, they hired Kim Brock to judge both showmanship and the gilt show.

The showmanship contest was slated to begin at 1 p.m. on that Thursday, with the purebred Duroc, Hampshire, Landrace and Yorkshire gilt shows immediately following. Entries began to rolling in, and everyone involved could see this junior activity was going to be quite a bit larger than first expected. With all of the animals entered in the STC and the junior event, it was clear they weren't going to fit in the swine barn at the Tippecanoe County Fairgrounds. After calls to several surrounding fairgrounds, the Cass County Fairgrounds finally agreed to let NSR use their hog pens, if NSR could pick them up and return them to the fairgrounds.

Show day arrived, and there were 202 gilts exhibited by more 120 junior exhibitors from 14 states. No doubt, Kim had his hands full starting with the first showmanship class through naming the champion gilts at 9 p.m. that evening. Skillathon and

“... It makes you step back and appreciate the commitment that was made by many to assist in the growth and preservation of the purebred swine industry.”

judging contests were held on Friday, with more than 200 young people participating in each event. To say this maiden event was a success would be an understatement!

Building from that event, the NSR has continued to hold a Summer Spectacular every year. Following the implementation of the NSR long-range plan, Jennifer Shike became the director of junior activities and was charged with the development of the NSR website. It wasn't long before being the director of junior activities was a full time position – and then some.

The National Junior Swine Association was officially formed in 2000 with 200 young people signing-up as members. Today, there are more than 12,000 NJSA members from just about every state and even a few foreign countries. Yearly activities have grown from the Summer Spectacular to the following: National Western Stock Show, Denver, Colo.; Southeast Regional, Perry, Ga.; Boot Camp for younger NJSA members held in Columbus, Ohio, last year; Western Regional, Turlock, Calif.; National Youth Leadership Conference held in Modesto, Calif., last year; World Pork Expo, Des Moines, Iowa; NSR Summer Spectacular, Louisville,

Ky.; Southwest Regional, Chickasha, Okla.; NBS® Barrow Classic, Austin, Minn.; Eastern Regional, Hamburg, N.Y.; American Royal, Kansas City, Mo.; North American International Livestock Exhibition, Louisville, Ky.; and a Regional Leadership Conference that

will be held at Michigan State University this December. Along with the addition of regional and national shows, the NJSA now includes classes for purebred barrows and crossbred gilts and barrows at most events. Quite an impressive list of activities, isn't it?

When you look back at the growth of the NJSA since its inception, and the major part it plays in many of our members' business plans, I ask you to see what a good interest bearing account it has been. If you look back to the first Summer Spectacular and see the young people who participated in that event, and the roles they now have in the swine industry, it makes you step back and appreciate the commitment that was made by many to assist in the growth and preservation of the purebred swine industry.

If you wish to be part of this progressive youth program, consider becoming a sponsor of the NJSA. You can call the NSR office at 765.463.3594 and ask for Cally or Torie. They can also be reached by e-mail at cally@nationalswine.com or torie@nationalswine.com, or mail your sponsorship to NSR, 2639 Yeager Road, West Lafayette, IN 47906. The possibilities are unlimited.



To contact Mike, use your smartphone to scan the code to the left or e-mail him at mike@nationalswine.com

Online



GENETICALLY SUPERIOR SEEDSTOCK

BRED GILT SALE



NSR-BuyersChoiceAuction.com

Designed by
Seedstock
EDGE

DEC. 5, 2012

Offering 45 head of Yorkshires, Durocs, Hampshires and crossbreeds due in January and February. Cooperative delivery available.

NEW HERDSIRE!

C002 CRAZY BONE 70-2

Visit www.olsenyorks.com
for more details.



277-3 (Step Ahead x Mighty Mack)
Due Jan. 10 to Moore Power



277-2 (Step Ahead x Mighty Mack)
Due Jan. 13 to Moore Power



23-6 (Net Worth x Mighty Mack)
Due Feb. 3 to Moore Power



29-5 (Net Worth x Mighty Mack)
Due Feb. 5 to Ice Age 8-7



6-6 (Headstrong x Power Wagon)
Due Feb. 1 to Desperado

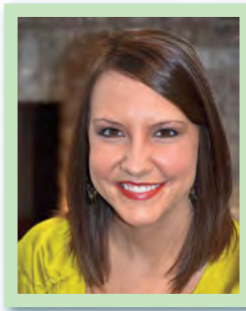


20-8 (Boost x Onyx 262-5)
Due Jan. 26 to Hollywood

29369 451st Ave., Irene, SD 57037

Office: 605.327.3285 • Chuck: 605.661.7864 • Ben: 605.660.2828 • olsenyorks@gmail.com

WWW.OLSENYORKS.COM



Youth View

Cally Hass
NSR Director of Junior Activities

Change

Many people have a strong fear of change; they cling to the familiar, even if it's not especially satisfying. Some may think change is annoying, overwhelming, frustrating, unnecessary, time-consuming and so on. There is even a word for the fear of change: Metathesiophobia.

I'll admit, I'm not a huge fan of change. I have a natural tendency to stay in my comfort zone with what is familiar and go by the phrase: *"If it's not broke, don't fix it."*

However, change is the only constant in life, right? British philosopher Alan Watts said, *"The only way to make sense out of change is to plunge into it, move with it and join the dance."* Change in life is inevitable, though sometimes it may be bittersweet. I believe that instead of resisting it, we might as well have faith and embrace it.

For the past several years, the NJSA Eastern Regional took place in Harrisburg, Penn., and was affiliated with the Keystone International Livestock Exposition (KILE). The KILE committee could not have shown the NJSA more hospitality, and the event was enjoyed by youth and adults alike. The KILE is a prestigious event, and the NJSA was honored to be a part of it.

Although we were in a comfort zone being affiliated with the KILE, lack of space and facility size restrictions were forcing us into a change. At the other three NJSA regional events, exhibitors were able to show 12 head, including purebred barrows and crossbred gilts and barrows, while space at the KILE limited

Eastern Regional exhibitors to only showing two purebred gilts each. We had to do what was in the best interest of the NJSA members of that region, and in December 2011, the NSR Executive Committee decided to change the event's location.

As I said, change sometimes makes me skeptical, but the weekend of Oct. 11-14 proved that change was just what the Eastern Regional needed. With a new schedule, additional events and more activities, I can personally say that

the corn toss tournament before kicking off the showmanship competition. The purebred and crossbred gilt shows started Saturday morning, and were followed with a farm safety seminar and the Skillathon contest. Saturday evening closed with a family pizza dinner and a movie and popcorn night, where families and friends sat together in the arena and enjoyed watching "Remember the Titans." Sunday morning started with a family breakfast before the

"The only way to make sense out of change is to plunge into it, move with it and join the dance."

— Alan Watts

the event was one of the most enjoyable hog shows I have ever attended, and I hope the families in attendance agreed.

The 2012 NJSA Eastern Regional took place in Hamburg, N.Y., at the Showplex on the Erie County Fairgrounds. Thursday was "family fun day" where exhibitors and their families could unload their hogs and make the short drive to Niagara Falls or one of the several other attractions in the area. On Friday, after going through registration, exhibitors took part in a MVP (Mentoring Values People) Program activity where mentors and protégés enjoyed a game of musical chairs and decorated miniature pumpkins together. After having the opportunity to become PQA Plus™ certified, youth and adults teamed up to show their talents in

purebred and crossbred barrow shows. After the awards ceremony, everyone said their goodbyes and headed home.

With an increase in entries and a more flexible schedule, we were able to make the Eastern Regional an even better experience for exhibitors and their families. We didn't resist the change, but embraced it and allowed it to work in a positive way.

Change is inevitable, and although we may not like it, we must learn to adapt and have faith in what is ahead. Georg C. Lichtenberg said, *"I cannot say whether things will get better if we change; what I can say is they must change if they are to get better."*



To contact to Cally, use your smartphone to scan the code to the left or e-mail her at cally@nationalswine.com

Stardom[®]

Advanced Show Pig Starter



Kent Stardom[®] show pig starters are formulated with multiple high-quality protein and energy sources to help young pigs express their genetic potential early, right up to sale time.



Exclusive palatability enhancers help stimulate intake.

Products include:

*Pre-Stardom[®] - phase-one for pigs 12-25 lb.
Mini pellet improves intake at a young age.*

Stardom[®] - for pigs 25-40 lb.

Stardom[®] Mixer - supplement for grind-and-mix diets.



For more information contact your local dealer.



Prospects

from the pen...

Jen Gillespie

Director of Marketing & Communications

Count Your Blessings, Make Your Blessings Count

This is, hands down, my favorite time of the year. The leaves have fallen, there is a nip of frost in the air and the holidays are here. And with the fall show season behind us, we can all take a little time to step back, relax and enjoy a deep breath or two.

The holiday season means something different for each of us. For the past several years of my life, it has been my time to take a break from school (now work) and enjoy quality time with my

I am a humanitarian at heart. Out of all the “things” I got for Christmas growing up, there is one gift I will never forget. That particular Christmas, after my brother and I had eagerly ripped the wrapping paper off of every present under the tree, my dad gave us one last envelope. Inside was \$100 bill. At the time, that was more money than I’d ever seen in one place – and I *couldn’t wait* to spend it. Then, he told us that the money wasn’t for us, specifically.

most impactful gift of all is your time. You can even do something specific to animal agriculture through charities such as Heifer International, World Vision or one that is particularly close to my heart, the HELP Foundation. Six years ago, I spent four months living in the Philippines working with Keith Hooper, founder of the HELP Foundation, to improve the literacy, health and livelihood of children in poverty. This year, I will be donating my first nanny goat to a family in need through the foundation’s animal livelihood project.

The best advice I can give is to make your giving unique to you – it will mean so much more that way. And as you make your “gift list” don’t forget organizations, like NJSA, that are close to your heart. While giving to those in need is certainly important, supporting youth can be equally impactful. The youth involved in NJSA are the future of our industry, and by giving to them, we can help instill the value of generosity. Whether it’s becoming a sponsor, donating items to a silent auction or volunteering your time to help at the various shows and events throughout the year, I know those involved appreciate your support.

As spoken by the infamous Winston Churchill, “*We make a living by what we get. We make a life by what we give.*”

During this special season, don’t just count your blessings – make your blessings count by sharing them with others.



**“We make a living by what we get.
We make a life by what we give.”**

– Winston Churchill

family. The value of this time has become even more apparent in the past year, as my trips home have become fewer and farther between since I have moved further away. Although I wish I could make it back to Kansas more often, the adage that distance makes the heart grow fonder has become a reality for me and, when I am with the people I love, I don’t take a single second for granted.

This is also a time of year when many of us take time to count our blessings and celebrate the gift of giving. We become more aware of the needs of others and offer support through various facets of philanthropy.

Those that know me best know that

Both my brother and I were to give the money away – to whomever or whatever we wanted. It could be to a charity, our church or even a stranger in the grocery store parking lot. At the time, I’m sure I thought that was a pretty rotten deal. But looking back, that’s one of the most impactful gifts my dad could have given me – and throughout the years, I have learned that giving often feels so much better than receiving.

One of the greatest things about giving is, just like gifts under the tree on Christmas morning, it comes in a million different packages. You can provide direct monetary support, donate clothing and food or, oftentimes, the



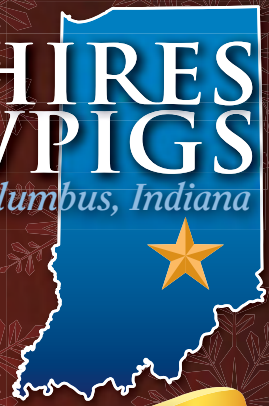
To contact Jen, use your smartphone to scan the code to the left or e-mail her at jen@nationalswine.com

PETERS HAMPSHIRE & SHOWPIGS

Delbert, Benjamin & Trevor

of Columbus, Indiana

812.522.5818



HAPPY HOLIDAYS

Online BRED GILT SALE

Dec. 6



The bred gilts in this sale are foundation females we kept back. They are all out of Capital Investment, Above All, Long Time Coming and Augusta.

SERVICE Sires USED:

- FORT KNOX (Shaffer's Gold Rush) — One of the great boars raised by Mark Long, Ohio
- POINT MAKER — Great Hampshire boar at High Point out of Point Taken
- ANALYZE THIS — Great crossbred boar at Top Cut
- RAIN DANCE (Shaffer's Gold Rush) — Grand Champion Hamp Boar, 2012 NSR Summer Spectacular
- TURNING HEADS (Top Cut) — Res. Champion Hamp Boar, 2012 NSR Summer Spectacular
- Plus, several other Hampshire boars!

1. Res. Grand Champion Barrow, 2012 Hancock Co. Fair, Ind.
Sold off the farm to Skylar Knapp
2. Shown 6 times — (4) Champions, (2) 4th Overall, (1) Res. Grand Overall
Shown by Arburn Harvey • Out of Capital Investment
3. The Fridge — 2nd in class Hampshire, 2012 Ind. State Fair
Sold to Shaffer's Gold Rush, Ind.
4. 1st-place Class 4 Hampshire Boar, 2012 NSR Summer Spectacular
Sold to Kilmer Swine Farm, Ind., for \$4,500 • Sired by Capital Investment



5. Grand Champion Barrow, 2012 Bartholomew Co. Fair, Ind.
*Raised by us
Shown by Trevor Peters*
6. Res. Grand Champion Crossbred Gilt, 2012 West Virginia Fair

Designed by
**SEEDSTOCK
EDGE**

Keeping you connected with recent news in the purebred swine industry.

Upcoming Seedstock EDGE Advertising Deadlines

Advertising deadlines for upcoming issues of *Seedstock EDGE* are as follows:

- **January/February Issue**
Ad copy due Nov. 27, 2012
- **March Spring Showpig Issue**
Ad copy due Feb. 6, 2013
- **April/May International Issue**
Ad copy due March 22, 2013

Entry deadline for NSR Winter Type Conference and NJSA Southeast Regional

The entry deadline for the NSR Winter Type Conference and NJSA Southeast Regional in Perry, Ga., is Dec. 14. Entry forms can be found online at www.nationalswine.com or in the October/November issue of *Seedstock EDGE*. The Southeast Regional will be held Feb. 1-3, 2013, with the WTC taking place on Feb. 2.

Wedding Announcement

Kyle & Laura Baade Wedding

Kyle Baade and Laura Anderson were married July 7, at Hitchcock United Methodist Church in Hitchcock, S.D. The bride is the daughter of Martin and Carol Anderson of Hitchcock. The groom is the son of Doug and Michele Baade of Rock Rapids, Iowa. Laura is a 2010 graduate of South Dakota State University, where she received a degree in apparel merchandising and business. She currently works at Great Western Bank in Fairbury, Neb. Kyle is a 2009 graduate of South Dakota State University, where he received a bachelor's degree in animal science. He is currently employed by John and Zella Penner of Penner Genetics in Plymouth, Neb. Congratulations to the couple!



Kyle & Laura Baade, Neb.
Wed July 7, 2012

obituaries



Chris Wallace
1955-2012

Chris Wallace

JBS United, Inc. recently lost a valued member of their team. Chris Wallace, JBS United's director of purchasing and employee of more than 34 years, passed away on Sept. 14, at the age of 57. Wallace was well known and respected throughout the animal feed and nutrition industry. Everyone at JBS United, and the many people he worked with outside the company, are deeply saddened by this sudden and tragic loss.

Wallace was born May 21, 1955, in Noblesville, Ind. He was a 1973 graduate of Sheridan High School and a 1977 graduate of Purdue University, earning a degree in agriculture. After college, he worked for Wallace Grain in Sheridan for three years before joining JBS United.

As an extension of his purchasing role at JBS United,

Wallace served as a member of the American Feed Industry Association (AFIA) Feed Control Committee and Purchasing Seminar Committee. He was a very active supporter of the AFIA and contributed a lot of his time to helping the organization.

Outside of work, Wallace was a fishing and hunting enthusiast, as well as an avid sports fan, supporting the Indianapolis Colts and all Purdue sports. He was a member of the Sheridan First Christian Church, the Sigma Phi Epsilon fraternity and the Sheridan Historical Society. Wallace was known for loving life, and he enjoyed hosting and entertaining his family and friends.

Wallace was surrounded by family members when he passed. He was laid to rest Sept. 19, in Crown View Cemetery in Indiana. Memorial contributions may be made to the Legacy Fund for the benefit of Peyton Manning Children's Hospital in Indianapolis, Ind.



William Fox
1943-2012

William Fox

William "Bill" Fox, 68, a life-long Michigantown, Ind., resident, died on Sept. 26, at Wesley Manor Retirement Community in Frankfort, Ind.

Fox was born Dec. 3, 1943, in Frankfort, the son of John and Helen (Price) Fox. He graduated from Clinton Central High School in 1961 and then attended Purdue University, where he majored in animal science and minored in agricultural economics, graduating in 1965. While at Purdue, Fox was also a member of the Farm House fraternity. He later achieved his master's degree in education in 2000.

Fox was a lifelong member of Michigantown Christian Church. In 1985, he became a teacher and head of the vocational agriculture department for Clinton Prairie High School Corporation. On June 10, 1994, he married the former Lou Davis; she survives. Fox raised Landrace and Duroc swine and grain crops.

Fox was very active with FFA throughout his life, including

serving as a state FFA officer in 1961-1962 and host for the International FFA Exchange Program. He was past president of both the Central Indiana Duroc Breed Association and Indiana Landrace Breed Association, and also past president and vice president of the Clinton County Fair Board. He assisted with the Hoosier Beef Congress and Hoosier Beef Cattle Association at the Indiana State Fair, where he was also an assistant at the swine building in 2004.

In addition to his wife, Bill is survived by one son, Todd (Missy) Fox; two daughters, Melissa (Jim) Carroll and Soo Ann (Matt) Boehm; two step sons, Chip Brandenburg and Steven Brandenburg; two step daughters, Vicky (Robert) Gray and Pam (Charlie) DeWitt; two brothers, George (Joyce) Fox and Lewis (Deb) Fox; six grandchildren; nine step-grandchildren; and two step-great-grandchildren. He was preceded in death by his parents and one great granddaughter.

Funeral services were held Saturday, Sept. 29, at Michigantown Christian Church with Pastor Bob Woods officiating. Burial followed in Whiteman Cemetery. Memorials in Fox's name may be made to the National FFA Organization.



John B. Broek
1928-2012

John B. Broek

John B. Broek, 84, of Sioux Center, Iowa, died unexpectedly Saturday, Oct. 27.

Broek, the son of Bert and Dena (Kempers) Broek, was born Aug. 31, 1928, in Sioux Center. He attended Welcome Township Country School and Western Christian High School. Broek was a lifetime member of Bethel Christian Reformed Church of Sioux Center.

Broek was united in marriage to Delma Schuiteman on Jan. 13, 1950. He farmed for 33 years north of Sioux Center. Broek was an active member of the community and served on the founding board of directors for American State Bank and as the president of the board of directors for Farmers Coop Society. He was also a member of the Sioux Center Christian School Board and was a lifetime member of the Sioux County Pork Producers.

Broek was well known in the hog industry and had established relationships with hog producers across the United States, as well as Canada. He accumulated a roomful of swine trophies and memorabilia over his lifetime. Broek was awarded the distinction of Master Seedstock Producer in 1967 by the National Pork Producers Association. This past year, Broek received the lifetime achievement award from the Sioux County Pork Producers. He supported many programs, such as 4-H and FFA, and mentored many youth and adults throughout their swine careers.

Broek is survived by a son, Jeff Broek; two daughters, Denise (Jim) Rodenburgh and Sandy (Brian) Byrnes; brother, Delbert (Ann) Borek; sister-in-law, Pracilla Broek; brother-in-law and sister-in-law, Robert and Helene Schuiteman; sister-in-law, Frances Schuiteman; brothers-in-law, Bernie Van't Hul and Norman De Jongh; eight grandchildren; three great-grandchildren; and special companion, Eleanor De Groot.

Broek was preceded in death by his wife of 57 years, Delma Broek; a granddaughter, Amy Jo Broek; his parents; sisters and brothers-in-law, Margaret and Joe Van Roekel and Lillian and Warren Van Roekel; brother, Barney Broek; brother and sister-in-law, Dave and Thelma Broek; brother-in-law and sister-in-law, Arvin and Wilemina Schuiteman; brother-in-law, Art Schuiteman; and sisters-in-law, Wilmina Van't Hul and Norma De Jongh.

Funeral services were held Wednesday, Oct. 31, at Bethel Christian Reformed Church of Sioux Center with Rev. John Lee officiating. The Broek family prefers memorials to New Homestead Retirement Community.



Phillip L. Halsema

Phillip L. Halsema, 69, of Lafayette, Ind., passed away unexpectedly at his home on Wednesday, Oct. 31.

Halsema was born in Lafayette, Ind., on Aug. 25, 1943. He was the son of the late John J. and Blanche E. (Stover) Halsema. He was raised in Romney, Ind., and graduated from Southwestern High School in 1962, where he lettered in track.

Halsema formerly worked in maintenance at the Home Hospital in Lafayette from 1982 until his retirement in 2009. He enjoyed bowling, throwing darts and coaching little league baseball, and was especially proud that he was able to coach his two sons. Halsema also enjoyed his joint business venture with his son, James, raising purebred and crossbred showpigs. Following his retirement, he enjoyed relaxing by watching westerns on television.

Halsema was formerly married to Sondra K. Hobaugh on Feb. 23, 1963.

He leaves behind his five children, Amy S. (Robert) Smith, Cathy Jo Halsema Fisher, Phillip L. (Jodi) Halsema II, James A. (Joni) Halsema and Nikole L. (Alonzo) Amos; five sisters Geneva DeVault, Ima Jean Lester, Mary Lou Haywood, Charlotte Cain and Kathryn A. (Don) Anoskey; 17 grandchildren; and 6 great-grandchildren. He was preceded in death by his two brothers, John "Bud" W. and Daniel R. Halsema.

Funeral services were held at the Maus Funeral Home in Attica, Ind., Nov. 4, with his son, Phillip L. Halsema II, conducting the service. Online condolences can be made at www.mausfuneralhome.com.

Phillip L. Halsema
1943-2012

To submit announcements for FYI, contact Jen Gillespie at jen@nationalswine.com

You be the judge.

The fourth edition of the NSR swine judging DVD is ready for your evaluation. This DVD is ideal for agriculture departments, 4-H livestock groups, FFA chapters or personal use. Designed to educate young people in performance traits, EPDs, indexes and swine evaluation, this DVD is for the beginner, but is challenging enough for the collegiate undergraduate as well.



NSR Swine Judging DVD

Ship to: (circle one) Business Residence

Name: _____

Address: _____

City: _____

State: _____ Zip: _____

Phone: _____

Send invoice to:

School or firm: _____

Attn: _____

Address: _____

City: _____

State: _____ Zip: _____

Orders must be accompanied by check, school or public agency purchase order, or charge card number.

Check one:

School/Public Agency purchase order # _____

My check is enclosed for \$ _____

Charge: **VISA** **MasterCard** **DISCOVER** (Circle one)

Card No.: _____

Exp. Date: _____

Three-digit security code (back of card) _____

Signature: _____

	Quantity	Price	S&H	Total
DVD		\$35	\$7	

Mail order or fax to: National Swine Registry
2639 Yeager Road • West Lafayette, IN 47906
Fax: 765.497.2959



Congratulations

MoorMan's® ShowTec®

Champions



Whitney Jung
Grand Champion Market Barrow
(Champion Hampshire)
2012 Tulsa State Fair



Shianna Scrifres
Champion Duroc Barrow
2012 Tulsa State Fair



Delainna Beard
Reserve Champion Yorkshire
Barrow
2012 Tulsa State Fair



Pace Mittelstaedt
Grand Champion Purebred Gilt
(Champion York)
2012 Oklahoma State Fair



Austin Kirk
Champion Duroc Gilt
2012 Oklahoma State Fair



Lydia Straka
Champion Yorkshire Barrow
2012 Oklahoma State Fair



Emile Mittelstaedt
Reserve Champion Yorkshire
Barrow
2012 Oklahoma State Fair



Trace Bennett
Reserve Champion Hampshire
Barrow
2012 Oklahoma State Fair



Maddie Butler
Grand Champion Overall Barrow
(Champion Duroc)
2012 NBS Jr Barrow Classic



Aaron Cain
Champion Hampshire Barrow
2012 NBS Jr Barrow Classic



Samuel Gardner
Reserve Grand Champion Gilt
(Champion Hampshire)
2012 NJSS



Christina Norman
Champion Duroc Barrow
2012 Ohio State Fair



Drake Jehle
Reserve Champion Hampshire
Gilt
2012 Iowa State Fair



Blake Frascht
Reserve Champion Duroc
Barrow
2012 Iowa State Fair



Josh Booth
Champion FFA Hampshire Gilt
2012 Missouri State Fair



Trace Bennett
Champion Hampshire Barrow
2012 NJSA SW Regional



CLAIM YOUR AWARD

Did you win champion or reserve champion at a recent show and fed MoorMan's ShowTec Show Feeds?

Submit your Livestock Youth Award Application to be recognized and claim your award! Contact Laura Meyer at 217-231-2749 for an application or visit us online at www.admani.com/moormansshowtec.



To locate a ShowTec dealer, log on, call or email us!

www.admani.com/moormansshowtec
866-666-7626 • AN_ShowFeedHelp@adm.com

ADM Alliance Nutrition, Inc., Quincy, IL



Like MoorMan's® ShowTec® on Facebook!



Scan here with your smart phone.

JGR *Bred with a purpose!*



JGR2 VAULT 35-8

(RWG0 Net Worth 233-1 x
CDO8 Klondike 260-4)

At the time of this picture, Vault was 4 1/2 months old and taken out of a pen of 12 boars in a slatted barn. After pictures, he was returned to his pen. This is one of those boars that really has no faults. That's not a bad thing. Vault is heavy boned and heavy muscled with a big hip. He also has a big, wide center rib with lots of depth.



CD01 Benchpress 263-6

(Benchmark x Littermate to Mighty One)

It's very difficult to find a boar with this much power and athleticism. He is one of those muscle boars that can move. He has a huge shoulder blade, top and rump. This guy can sire boars, barrows and females.



JGR1 Pierce 25-6

(TBRO9 Rondo 64-4 x
JGR8 Mack Attack 81-5)

The heaviest-boned, biggest-footed son of Rondo to date. His dam is a littermate to Mighty Mack and that line contributes to the stoutness this guy has. This guy can get out and move.

10316 N. Ave. • Maynard, IA 50655

Jim: 563.637.2351 • Cell: 563.920.7590

www.grimmpurebreds.com



Designed by
Seedstock
EDGE



FIND YOUR CHAMPION!



Offering bred gilts due in December, January and February. Check our website for more information on how to FIND YOUR CHAMPION!



60-5 (Crown Royal x Square D)
Littermate to the NSR Summer Spectacular
Champion Gilt
Due Dec. 28 to King

44-4 (Integrity x Truck)
Littermate to the WPX Champion Gilt
Due Jan. 13 to Mack Truck

10-2 (Meatpacker x Oxygen)
Littermate to the Iowa State Fair Champion Gilt
Due Jan. 24 to Bold Ruler

Designed by
Seedstock
EDGE



STEWART'S DUROC FARM

1750 212th St., Waverly, IA 50677
Doug: 319.352.1709 • (c) 319.231.0676
stewartsdurocs@gmail.com

STEIN & STEWART GENETICS

7912 Newton Road, Odessa, MO 64076
Carl Stein: 816.633.4343 • (c) 816.914.4914
carlvstein@gmail.com

www.stewartsdurocfarm.com

BOLO

& Company

By Katie Maupin

What started as an out-of-hand 4-H project has turned into a family partnership and a future for four youth involved in the swine industry.



**KRISTIN
BOYLUM**

**ZACH
LOPPNOW**

**KARI
BOYLUM**

“It’s funny, when we first started doing this and ending up with more pigs than we needed and started selling a few, people would say, ‘Oh, you’re in the showpig business,’ and we’d say, ‘No, we’re just an out-of-control 4-H project,’” says Rann Loppnow, one of the “LO’s” of BOLO Showpigs. “But it’s changed in the last few years – we look at this as business.”

The Boyum and Loppnow families of Wanamingo and Lake City, Minn., both had agricultural roots prior to the formation of their 40-head sow partnership. Steve Boyum was a crop and dairy farmer and Rann Loppnow raised feeder pigs up until the market crashed in the late '90s. Neither knew anything about the showpig world until their children started to show pigs at their county fairs. A little disheartened with the results they were seeing in the ring, the families called upon their livestock background to start the ultimate 4-H project. They went out and purchased some Yorkshire gilts and semen – mainly of Wayne Huinker and Cobb heritage – and set off into the purebred industry.

“We basically said, if we want to do this we need to start breeding our own,” Rann says. “That is when Steve and his wife, Tracy, introduced themselves, and we started this kind of informal partnership. As our kids got older, they got more and more involved in all aspects from picking genetics, to taking care of the herd and even doing the AI-ing and farrowing.”

Through their hard work, the families are starting to carve out a name for themselves in the Yorkshire circles. Together, they captured Grand and Reserve Yorkshire Boars and Gilts at the Minnesota State Fair this sum-



Left: Owners of BOLO Showpigs, Kari Boyum, Kristin Boyum, Katie Loppnow and Zach Loppnow, all gather behind their award-winning Yorkshire gilt. During their first trip to the World Pork Expo, they garnered Fifth Overall and Reserve Champion Bred-and-Owned Gilt honors. The group looks forward to becoming more active in the national show ring.

“We’re a very cohesive group here. We all share our successes, failures and frustrations, but in the end, it will be a good day because we just enjoy what we do.”

– Katie Loppnow

mer. This “double-double” victory is the first of its kind and speaks to how deep the quality is in the program the two families work together each day to build.

Team Effort

Compared to many partnerships, the BOLO agreement is rather informal. It’s less of an agreement than two families with one passion that work together to achieve their goals.

The group shares everything from the joy of success to the sting of disappointment.

“It is not individualized,” says Katie Loppnow. “We’re a very cohesive group here. We all share our successes, failures and frustrations, but in the end, it will be a good day because we just enjoy what we do.”

Everyone plays a role in the operation and is involved in each decision, no matter how big or small.

“We have a herd that is registered entirely in the names of the four kids,” Katie explains. “So we all work together ... and every decision

is run by at least four people – six if you count Steve and Rann. There is never a decision made without us being aware of it or at least having input.”

By working together to make their Yorkshires better, the BOLO kids have each carved out their own niche within the operation.

KRISTIN BOYUM, BOLO Director of Communications

Kristin is the self-appointed public relations specialist. She enjoys going to shows and sales, meeting new people and talking pigs. She is constantly trying to learn new things about the industry and uses what she learns in the day-to-day workings of BOLO, whether it is a new nutrition tactic or an exercise schedule.

Kristin graduated from St. Olaf College last spring, and works as an R.N. at the MAYO Clinic close to her family’s farm. Although some may raise an eyebrow when you make the argument that nursing and raising showpigs are related fields, Kristin will tell you that the skills she learns apply in both arenas.



KATIE
LOPPNOW

“I know that I have responsibilities that I’m accountable for and need to carry through each day, and I’ve learned that hard work really does pay off,” she says. “I also think that being put into new situations at fairs and shows, talking to breeders, both new and old, and getting advice from experienced breeders transfers to my job at the hospital where I have to meet new people and talk to them everyday – it’s just about starting conversations and meeting people.”

Kristin takes her ability to make connections and translates it into spreading the word about the industry. Although she didn’t go a traditional ag route, she does her part to help educate everyone she meets about swine production. Her family even hosted an annual “pig walk” workout with her collegiate volleyball team.

KARI BOYUM, BOLO Fitness and Wellness Coordinator

As an apparel merchandising student at Iowa State University in Ames, Kari has an eye for the latest fashions. But at home, she is known as the pig walker. She and Kristin can often be found walking their latest prospects through a mile of CRP ground on the Boyum farm.

“My job, I would say, is the athletic trainer and just loving them,” Kari laughs. “I’m the one who gives them the most compassion and babies them the most, because

I walk them every morning.”

Like her sister, Kari shares her story of BOLO pigs from farrowing to finish with fellow students and fashionistas. After several of her friends saw pictures of her pigs posted on the Internet, they came up to the Minnesota State Fair to see a pig show in person.

“They had so many questions,” she says. “It was a lot of fun to share it with them.”

Through BOLO Showpigs, Kari also learned hard work, which will serve her well in her future endeavors, and no doubt she is inspired by some of the show ring fashion trends that she, one day, might be able to market on Main Street.

ZACH LOPPNOW, BOLO Herd Health Technician and Grounds Supervisor

As the only boy, Zach is the black sheep of the BOLO kids and the heavy-lifter by default. He’s charged with many of the pre-farrowing and finishing tasks.

“I’m involved with all the vaccinations, pig processing, moving sows back and forth and just doing anything around the farm that needs to be done – hauling feed, shoveling barns, hauling pigs – I do it all, or help with it at least,” he says.

All of this hard work at the farm shaped his future career path. After two and a half years of studying engineering at the University of Min-

nesota, Zach realized he had already found his true passion, and it wasn’t engineering. So he switched to animal science with a pre-vet emphasis.

Today, Zach uses his coursework to improve BOLO Showpigs herd health and biosecurity protocols. For example, they no longer take females back into the sow herd after they are shown. Instead, they use off-season litters to produce their next generation of replacements.

Regardless of his herd health improvements, Zach’s ultimate goal and greatest satisfaction comes from happy customers.

“I really enjoy breeding and raising pigs for youth exhibitors,” he says. “Getting to see the success they have with these pigs, especially breeding gilts, is a great reflection of the program that we put together here on the farm.”

KATIE LOPPNOW, BOLO Genetic Delivery Specialist

Katie’s job is to make sure that BOLO’s newest genetics safely make it into the world. Her slight build and small hands keep her on-call constantly as the official “pig puller.” And that means late night trips home from the University of Minnesota, where she is pursuing a biology degree, to help with a delivery.

“I get the job of getting the babies out and our genetics on the ground, no matter what it takes,” Katie says. “I absolutely love the farrowing aspect of things, and being there when the genetics you



Above: Rann, Katie, Zach and Valerie Loppnow gather for a family picture at the World Pork Expo. The family handles much of the BOLO Showpigs farrowing at their family farm. Daughter, Katie, is the official “pig puller” and has aspirations of becoming a doctor. Zach found his true calling in the industry and is currently studying animal science with a pre-vet emphasis.



Above: The Boyums (Steve, Kristin, Kari and Tracy) enjoy some family time at a show. Both girls say that shows are one of their favorite parts of the business because they get to meet and visit with so many people. The Boyums hosted an annual “pig walk” workout at their farm to help their showpigs and local volleyball teams get in shape.

put together come out.”

It's no surprise that Katie loves the excitement of the farrowing house; it aligns with her aspirations

to become a doctor. But as she will tell you, she enjoys all aspects of planning for and implementing new genetics.

Her father, Rann, laughs about how she was often heckled on her school bus for reading boar stud catalogs as opposed to the latest teen magazine. Katie doesn't care, because she sees value in the experience she gains by studying genetics, AI-ing and playing a key role in farrowing.

“Getting to see these things is really eye opening,” she says. “A lot of kids don't get to see their pigs come out for the first time; they don't know where the genetics came from. That's the most impactful part of my experience, because when one of my pigs does well in the show ring, I know that I helped put them together from the beginning. I know their mothers; I know their fathers, and I was there when they hit the ground.”

STEVE BOYUM and RANN LOPPNOW, BOLO Co-Founders

BOLO Showpigs exists due to the passion that Steve and Rann bring to the operation, according to Kristin.

But Rann insists that their success is a group effort built on solid communication.

“If you want to call Steve and I President and Vice President, we can't do anything without the approval of Congress, and that's our kids,” he says.

And in many ways, it will be their kids who will be in charge of the future of BOLO Showpigs.

Expansion and Growth

Down the long road, Zach sees BOLO not only as a future for him, but maybe even his own children.

“A lot of times, when you talk about the agricultural industry, you hear about generations of farmers – their grandfather did it, his son did it and his son's son will in the future. I think with the group we have here, we could have that situation,” Zach says. “I think we're the next generation of BOLO, and our

Top Right: Kristin and Tracy Boyum take the BOLO show string on a stroll through their mile long CRP land trail.

Bottom Right: Some of the BOLO crew takes time to pose for a picture in the farrowing house. (l-r): Zach Loppnow, Kari Boyum and Kristin Boyum.

kids could even be the next generation of exhibitors.”

Both Katie and Kristin would like to see the BOLO herdmark continue to make its way into the national show scene. They attended their first World Pork Expo this summer and left Des Moines with Fifth Overall Yorkshire and Reserve Champion Bred-and-Owned Gilt honors.

Rann sees a simpler goal – just produce good, sound, genuine females that can win in the ring and produce in the crate.

“I don't see us ever being a 300-sow taking over the world operation,” he says. “That's just not what we do. We just want to keep producing good quality females that are affordable. And as long as we have a passion for it, we will keep doing it.”

Everyone agrees that the most important part of their business is not necessarily what they win, but the experiences that their customers have. Now that they're too old for the youth ring themselves, the BOLO kids' proudest moments come from a photo of a winner they sold or a text about a little girl's gilt who laid down to have 14 pigs.

“No matter where we go from here, all of our success will always be drawn from the people who show our pigs, help us put our pigs together and the people who are there every step of the way and are with us in this industry,” Zach says. “Without them, we would have never made it this far, and no matter the success that we've had, we will always remember there are people that helped us get to this point.”

Remembering a humble beginning

The Boyums and Loppnows say they have a lot of people to thank, including Wayne Huinker and Aaron Cobb, for taking time to talk with them outside the ring and supplying



them with the foundation of their herd. They also credit Michael Lackey for helping find new markets for BOLO pigs, as well as Mindy Ward and Brian Hines for their nutrition advice.

They agree that their success is built upon what they have learned from others, and one of their proudest moments came when one of their mentors, Wayne Huinker, purchased their boar “Summer Shandy” at the Minnesota State Fair, bringing their operation full circle.

“My bottom line is this has just been fun – really fun – and enjoyable,” Rann says. “And I think the kids would agree that we will just take what we learn and continue to move forward with this business. It's just such an honor to be able to do the things we do.”

After a brief pause, Rann's wife, Valerie, adds, “We just can't say thank you enough.”

DIGILINK



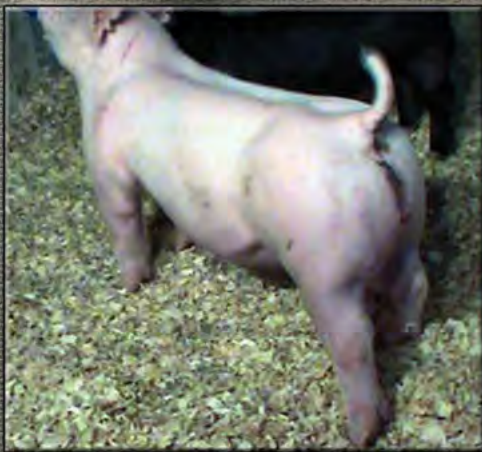
Visit the BOLO Showpig website by scanning this DigiLink with your smartphone.

ARK... PRODUCING A WONDERFUL EXPERIENCE!!!



Reserve Champion Yorkshire Barrow and Reserve Grand Overall Purebred Barrow at the NJSA Southwest Regional as well as the Champion Yorkshire and Grand Overall Barrow at the Canadian County Fair, Okla.

Congratulations to Kaylin Listen for driving this tremendous Yorkshire barrow in Oklahoma and gaining fantastic result with him there! We had many calls and remarks made about the unique make-up of this barrow and how stout he was for a purebred Yorkshire! We would like to take the time in this ad to say "thank you" to Big Bob, Kay-Kay, and the entire Listen Family, not only for the job you do all the time feeding and showing pigs, BUT ABOVE ALL the job you guys do representing A GREAT SHOW PIG INDUSTRY FAMILY!!! Folks like the Listen Family set the bar for everyone else to follow! Its great ethics and leadership like you guys exemplify that is allowing our industry to continue to grow and flourish! Not only does the Cobb Family appreciate that but we feel certain we can speak on behalf of the entire show pig industry in saying, THANK YOU!!!



As listed in the April Online Sales Catalog:

Lot: 169 • EN: 158-2 • Breed/Sex: Yorkshire Barrow • Sire: Final Move
Dam: 46-2 • Sire of Dam: Checkmate • Weight: 72lbs

Another super impressive Yorkshire barrow! There is not a weak link in this entire set of Yorkshire Barrows!!! We think every one of these barrow can play at the State Fair level!!! This barrow is another one that offers great muscle shape and tone for a purebred Yorkshire barrow, along with style and look on the profile!!! Study this barrow and these other top end Yorkshire barrows and realize they are the kind that can win at the highest level!!!



Visit www.stevcobbfamily.com for more information.

Mark the Dates:

Monday, Nov. 12th (Offering Sept. born barrows & gilts) • Wednesday, Dec. 12th (Offering Yorkshire & Crossbred gilts due Jan. to March)

Steve Cobb & Family

Office: 870.486.5894 • Steve: 870.219.7281 • Aaron: 870.219.4443 • scobb123@hotmail.com



see you in the

WINNER'S CIRCLE

SWEEPSTAKES

Brought to you by ...

Showmaster® Feed, Sullivan Supply/Stock Show U™ and Stockshow Confidential are making it easier for you to get in the winners circle by giving away Sullivan Supply equipment and Showmaster® feed in our NEW See You in the Winner's Circle Sweepstakes!

Over a
1,000
PRIZES
to be awarded!

Sweepstakes start November 1, 2012 and prizes are awarded through March 31, 2013. Entries must be received by February 28, 2013.

Go to www.showmasterfeeds.com for more information.



Got to www.showmasterfeeds.com for more information.

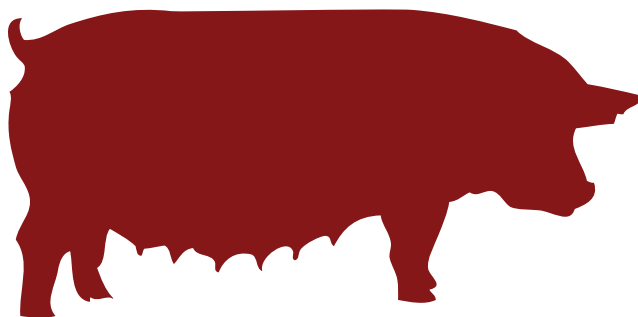


© 2012 Cargill, Incorporated. All Rights Reserved.
The Stockshow Confidential logo is a trademark of Stockshow Confidential. Smart Sensation, Stock Show U and the S/S Advantage logo are trademarks of Sullivan Supply.

Make her Last

By Katie Maupin

Now you have her - the next real “changer” for your operation. So, how do you make her last?



Sow longevity can be affected by the management of your replacement gilts – but you can help ensure her success before she ever sees a crate.

A female's reproductive performance is influenced long before she is even bred. Oftentimes, a sow's future longevity depends on proper gilt management, from the time she is placed in the replacement pen through her first parity.

A sound foundation

The first step to selecting any long-lasting female is evaluating structure, performance and growth. According to Dr. Ken Stalder, Iowa State University professor of animal science, you should always select replacements that are in the top three-fourths of their contemporary group for growth rate. Smaller, slower-growing females are often harder-doing. Ideally, Stalder suggests that females should be on target to weigh at least 300 pounds before they are ready to breed.

Just as important as performance is structural soundness. (See the Digi-Link for National Pork Board's guide on evaluating soundness on the next page.) Gilts with feet and leg problems will not get better as sows. Instead, their structural problems will be exaggerated in the crate, likely leading to their exit from your sow herd.

"I would contend that most feed intake issues, during a sow's lactation, are the result of sows with bad feet, cracked toes or other feet and leg problems," Stalder says. "This is because when they have these problems, they don't want to stand to eat, and then these problems

are just exasperated down the road leading to females who do not cycle."

One of the most problematic structure issues that Stalder often associates with poor sow longevity is when a gilt is too straight on the front end of her skeleton. Sometimes, this is referred to as buck-kneed and is almost a certain indication that this female will drop out of the herd.

Conversely, Stalder points out, females with extra cushion to their front knees and soft pasterns seem to last longer than their counterparts.

"They seem to have more cushion to their joints, and their joints can take a pounding if they're on concrete all day," Stalder says.

Producers also need to be critical of gilts' underlines.

"Today, we're asking gilts to nurse up to 16-18 pigs – which is more than a few years ago," Stalder says. "You need to make sure she has enough 'spigots' to feed all those piglets."

He recommends a 7 and 7 minimum standard for replacement females.

Patience is a virtue

After selecting gilts for your replacement pool comes one of the most important steps in the whole process – waiting. Both Stalder and Dr. Don Levis of Levis Worldwide Swine Consultancy recommend not breeding females until their second estrus – even if they are 300 pounds.

Stalder explains that estrus is just a feedback mechanism of hormones 'talking' to each other. Some of these essential hormones are produced in the gilt's brain, while others are produced in her reproductive tract.

"You have to be chronologically old enough and the reproductive tract needs to be developed well enough (before they are bred) so these gilts will have long, successful and productive lives," Stalder says. "And these two things don't always go hand in hand. Like humans, some gilts develop differently, either slower or faster than others ... and if either is slow to develop, the entire process is slowed down."

By letting gilts cycle and skip at least one estrus before breeding, you can make more money in the long run – even if it means feeding them slightly longer, says Levis.

"If you skip the first estrus and breed on the second, you could pick up from 1 to 1.5 pigs," he says.

Science has shown this difference in litter size can be seen as many as four litters later.

"It's important to do; people say it's too much time and effort to skip her and not breed her on her first estrus, but that will still be costing you money up to four litters later," Levis says.

Setting up to cycle

With science stating the benefits of breeding gilts on their second estrus,

producers may be tempted to reach for a pharmaceutical to encourage estrus within their prepubertal gilts, such as P.G. 600. But both Levis and Stalder warn against it.

By treating a high percentage of females with hormones and “over-riding” the natural selection system, producers could run into reproduc-



tion problems down the road.

“I’ve been on a farm that treated a large percentage of gilts, and it was a complete disaster,” Levis says. “They injected everything; then, none of their sows wanted to cycle.”

And by picking females out of a group of hormone-treated gilts, producers are putting less emphasis on selecting replacements that are ideal in their maturity pattern and cycle easily.

Stalder agrees that hormones should not have widespread use within a replacement gilt pen.

“I’d much rather see the process happen naturally,” he says. “My belief is that we are using the needle too much and substituting for less desirable management.”

Proper boar exposure is still the best way to encourage premature gilts to cycle naturally, according to Levis.

To maximize the benefits of boar exposure, producers should use boars that are at least 11 months of age.

Boars will be sexually mature at this time, and they’ll produce hormones in their saliva that encourage estrus.

Tip-top shape

After a gilt is bred, her first parity serves as the true testing ground for sow longevity.

Both Levis and Stalder encourage producers to get the gilt eating as quickly as possible after parturition. It’s proven that feed intake during the first week of lactation has the largest effect on how gilts will re-cycle. This is because reproductive hormones essential to the estrous cycle are reestablished during this time.

“Getting those gilts through the system and back to the farrowing house is the main thing.”

— Dr. Don Levis

“If their feed was limited during the first 7-10 days ... those sows can recover and they may look fine, but if you studied their reproductive tract, it would look like they’ve never had a litter – you really need to get these sows on full feed as soon as possible,” Levis says.

Stalder agrees, saying that feed intake during lactation is one of the key components to sow longevity and is often a reason for reproductive failure.

“You need to be on top of how much she is eating during lactation to get her ready so she can have a productive cycle after weaning,” he says.

If a sow isn’t eating as much as normal, her diet should be formulated more densely to compensate for her lack of intake.

“You always have to remember that those animals have nutritional requirements for a number of grams of a nutrient, not a percentage,” Stalder explains. “So if they’re not eating as much, those diets need to be more densely fortified so they can get the recommended amount of nutrients, vitamins and minerals.”

Sometimes, even with good manage-

ment, sows leave the farrowing crate heavier or lighter than what is ideal.

Stalder suggests not tweaking her feed intake until she has been bred and implantation occurs, which is usually within 30 days or so. Then, producers can use the industry-accepted five-point scale system to evaluate the condition of their females, or they can opt for Stalder’s simple three-point program.

“Simply ask yourself, ‘Is she too thin where I should up her intake, too fat where I should lower her feed intake or just right?’” he says.

Sow condition should be evaluated every couple of weeks and adjusted

according to their progress. In past studies, Stalder has proven that a sow can change a body condition score within as little as two weeks, with unlimited resources to boost feed.

Management and selection are key

Past your initial selection of sound, functional females, proper management of your sow herd is essential to lower your turnover.

Levis sums it up like this: “Getting those gilts through the system and back to the farrowing house is the main thing. When people call me about a reproduction problem in their sow herd, the first place I go is the farrowing house. People will say, ‘No, it’s a reproductive and breeding problem.’ And I say, ‘Yes, but it probably happened before you got them to the breeding barn.’”

DIGILINK



To learn more about evaluating soundness, download this guide from the National Pork Board by scanning this DigiLink with your smartphone.

Heimer Hampshires



Swagger

Paparazzi x Rated R x Fatal Attraction
Owned by: Heimer Hampshires & Jackson Showpigs

#theygotswag

ONLINE SHOWPIG SALE

NOVEMBER 26

www.showpig.com



LAST CALL FOR SEPTEMBER-
BORN BARROWS & GILTS
BEFORE VALIDATION



ONLINE BRED FEMALE SALE

DECEMBER 13

www.showpig.com



MANY OF FEMALES IN THE OFFERING BRED TO **SWAGGER**
OTHER SIRES USED INCLUDE: CLOSET MONSTER, SPRINGSTEEN AND
FULL STRUT. HAMPS BRED TO WALK THIS WAY.

Happy Holidays
FROM THE HEIMERS

During this Holiday Season we want to say Thank You for an unforgettable 2012. The opportunity to be a part of this industry is truly humbling and we wish everyone a Merry Christmas and all the best in the New Year.



JESSE, AMY, MAX & HARPER HEIMER

217-257-0138

555 BIRCH LANE • TAYLOR, MO 63471

JHEIMER13@EARTHLINK.NET

TY STIKELEATHER, HERDSMAN

620-515-5086

TY@HEIMERHAMPS.COM

WWW.HEIMERHAMPS.COM

BOUND FOR GLORY

ONLINE BRED GILT SALE



www.NSR-BuyersChoiceAuction.com

Tuesday, Dec 4

Designed by
Seedstock
EDGE

↳ *Offering her daughters!*



Offering 35+ Hampshire, Yorkshire and crossbred females due to farrow in January and February!

Littermates to our popular Indiana State Fair entry will sell! ↳



↳ *Champion barrow at the Kansas Jr. Livestock Show out of a female bought from us. Great Job Mai Family!*



PLAYBOY

↳ *Featured exotic service sire*



POINT-MAKER

Featured Hamp service sire ↳

Pennergenetics.com

PENNER GENETICS

Breeding tomorrow's champions today!

Plymouth, Neb. John Penner (c) 402.223.7108

pennerhamps@diodecom.net

Kyle Baade (c) 402.239.2229

kyle@pennergenetics.com

ROLLIN' IN

Style



**AND
DURABILITY**

Trailers Done Right.

260.356.6970
Call Tommy today
260.519.2359

TD WALL, INC.

YOUR LEADING TRAILER SOURCE

1901 Hickory Avenue, Huntington, IN 46750

tommy@wallsmh.com

www.wallsmh.com

Designed by
**Seedstock
EDGE**

2012 National Picture Judging Contest



Sponsored by:

The data used in this contest is intended for educational purposes and is not the actual data for the pigs pictured. The figures accompanying the pictures will be used by our official judges, however, to determine the official placings. Listed below is an explanation of terms used in the contest.

Expected Progeny Difference (EPD) – An EPD is the best estimate of a sire or dam's genetic worth, given the information available. It is the actual difference in performance a producer can expect from future progeny of a sire or dam, relative to the future progeny of an average tested parent.

Swine Testing and Genetic Evaluation System (STAGES™) – A genetic evaluation system provided to the members of the four breed associations of the National Swine Registry. STAGES™ utilizes performance records for numerous growth, carcass and maternal measures to predict the genetic value of each pig and its parents.

EPDs:

Backfat (BF):

Expressed in inches, this EPD is a predictor of the difference in external fat thickness at the 10th rib. Animals with negative (-) EPDs for backfat will produce offspring that have less backfat at harvest than offspring of parents with higher EPDs.

Pounds of Lean (LBS):

A genetic predictor of pounds of fat-free lean adjusted to a 185-pound carcass, or approximately a 250-pound live weight. This EPD is calculated from the EPDs for backfat and loin eye area. A sire with a positive (+) EPD for LBS will produce offspring that yield a higher percentage of lean and have a greater chance of obtaining full-value on a lean-based carcass grid.

Days to 250 pounds (DAYS):

A prediction of an individual's genetic merit for growth performance to a 250-pound live weight. Animals with a negative (-) EPD for DAYS will produce offspring that require fewer days to reach market weight when compared to the offspring of individuals with positive (+) genetic values for DAYS. Selection on this EPD will produce progeny that aid in earlier building close outs.

Feed Efficiency (FE):

Expressed in pounds, this EPD is a predictor of the amount of feed required to generate one pound of gain during the finishing phase of production and is calculated from the EPDs for BF and DAYS. Selection of sires with negative (-) EPDs will produce progeny that more efficiently convert feed to gain when compared to sires with higher EPDs for FE. This EPD can be used to genetically decrease feed costs.

Number Born Alive (NBA):

An expression of the genetic merit for the number of live pigs farrowed in a litter. Daughters of sires with positive (+) EPDs for NBA will farrow a greater number of live pigs than daughters of sires with lower EPDs for NBA.

Number Weaned (NW):

A genetic predictor of the total number of pigs weaned within a given parity. Daughters of sires with positive (+) EPDs for NW will wean larger litters than daughters of sires with lower genetic values for NW.

Loin Eye Area (LEA):

Expressed in square inches, this EPD is a predictor of an individual's genetic merit for 10th rib loin eye area adjusted to a 250-pound live weight. Animals with a positive (+) EPD for LEA will produce progeny with more loin muscle when compared to the offspring of animals with negative (-) genetic values for LEA.

Wean to Estrus Interval (WTE):

Expressed in days, this EPD is a genetic predictor of the number of days required for a female to return to a serviceable heat after weaning. Daughters of sires with negative (-) EPDs for WTE will require fewer days to return to estrus after weaning than daughters of sires with higher EPDs. This EPD is the most efficient selection tool for genetic improvement of fertility and non-productive sow days.

Sow Productivity Index (SPI):

An economic index that ranks individuals for reproductive traits. SPI weights the EPDs for number born alive, number weaned and litter weight relative to their economic values. Each point of SPI represents \$1 per litter produced by every daughter of a sire. When sow efficiency is the primary concern, SPI may be the most effective selection tool for simultaneous improvement of maternal traits.

Maternal Line Index (MLI):

An economic index designed for selection of seedstock used to produce replacement gilts for crossbreeding programs. MLI weights EPDs for both terminal and maternal traits relative to their economic values, with approximately twice as much emphasis on reproductive traits relative to post-weaning traits. Each point of MLI represents \$1 per litter produced by every daughter of a sire.

Terminal Sire Index (TSI):

An economic index designed for the selection of seedstock for use in a terminal crossbreeding program. Animals selected for high TSI are designed to excel in lean growth and efficiency from weaning to harvest. TSI weights EPDs for backfat, days to 250 pounds, pounds of lean, and feed/pound of gain relative to their economic values. Each additional index point difference is equal to \$0.10 per market hog.

ACTUAL DATA:

Weight Per Day of Age (Wda):

Based on actual weight and age, this measure is the weight gained per day of age averaged over the life of the pig.

10th Rib Backfat (Bf):

Expressed in inches, this is an actual ultrasound measure of backfat at the 10th rib and is adjusted to 250 pounds.

Loin Eye Area (Lea):

Expressed in square inches, this is the actual ultrasound measurement of the loin eye size at the 10th rib and is adjusted to 250 pounds.

Intramuscular Fat (Imf):

Expressed as a percentage, this value is an ultrasound measure of the lipid content of the loin muscle. Higher levels of IMF are desired for meat quality based markets.

Actual Number Born Alive (Nba):

This value is the actual number of pigs born from the dam's parity when the pig was born and are measurements taken from the pig's dam.

Actual Number Weaned (Nw):

This value is the actual number of pigs weaned from the dam's parity when the pig was born and are measurements taken from the pig's dam.

Litter Weight (Lwt):

This is the actual cumulative weight of all pigs weaned from the pig's birth litter. This weight is recorded on the pig's dam and is adjusted to 21 days of lactation.

Class 1 – Hampshire Boars Scenario: Rank these boars as they will be used to produce elite Hampshire seedstock that will be marketed through NSR Shows & Sales.



1

Actual Data: 159 Days, 0.72 Bf, 9.1 Lea



2

Actual Data: 164 Days, 0.68 Bf, 8.0 Lea



3

Actual Data: 158 Days, 0.96 Bf, 8.4 Lea



4

Actual Data: 160 Days, 0.75 Bf, 8.9 Lea

Class 2 – Duroc Boars Scenario: Rank these boars as potential terminal sires in which they are mated to F1 Yorkshire x Landrace females for the production of market hogs.



1

EPDs: -4.2 DAYS, -0.02 BF, 1.18 LBS, -0.04 FE



2

EPDs: -3.1 DAYS, +0.01 BF, 1.12 LBS, -0.01 FE



3

EPDs: -3.0 DAYS, 0.00 BF, 1.11 LBS, +0.01 FE



4

EPDs: -3.8 DAYS, -0.03 BF, 1.15 LBS, -0.02 FE

Class 3 – Yorkshire Boars Scenario: Rank these boars as they would be purchased by an NJSA exhibitor with the goal of producing a foundation set of replacement Yorkshire gilts.



Indexes: 110 SPI, 109 MLI



Indexes: 107 SPI, 110 MLI



Indexes: 105 SPI, 103 MLI



Indexes: 109 SPI, 111 MLI

Class 4 – Landrace Boars Scenario: Rank these boars for usage in a seedstock operation whose primary focus is to generate purebred gilts that will be mated to Yorkshire boars for F1 parent stock females.



EPDs: +0.57 NBA, +0.29 NW, -0.03 WTE, 119 MLI



EPDs: +0.53 NBA, +0.35 NW, -0.05 WTE, 121 MLI



EPDs: +0.37 NBA, +0.19 NW, 0.00 WTE, 112 MLI



EPDs: +0.56 NBA, +0.20 NW, -0.02 WTE, 118 MLI

Class 5 – Hampshire Gilts Scenario: Rank these gilts as potential replacements in a purebred operation that focuses on the production of purebred barrow and gilt projects for NJSA events.



Class 6 – Duroc Gilts Scenario: Rank these gilts as replacements in a commercial operation that focuses on the sale of purebred breeding stock to international buyers with a primary emphasis on phenotypic quality and adequate genetic values.



EPDs: -3.5 DAYS, -0.02 BF, +0.02 LEA, 115 TSI



EPDs: -3.0 DAYS, +0.02 BF, 0.00 LEA, 109 TSI



EPDs: -2.8 DAYS, -0.01 BF, +0.01 LEA, 113 TSI



EPDs: -2.5 DAYS, -0.02 BF, +0.01 LEA, 110 TSI

Class 7 – Yorkshire Gilts Scenario: Rank these gilts as they would be bred to Yorkshire boars and marketed as bred gilts through an online sale hosted by the NSR Buyer's Choice Auction service.

Class 8 – Landrace Gilts Scenario: Rank these gilts as they would be bred for the production of purebred boars and gilts that are sold to commercial F1 multipliers.



Indexes: 108 SPI, 106 MLI



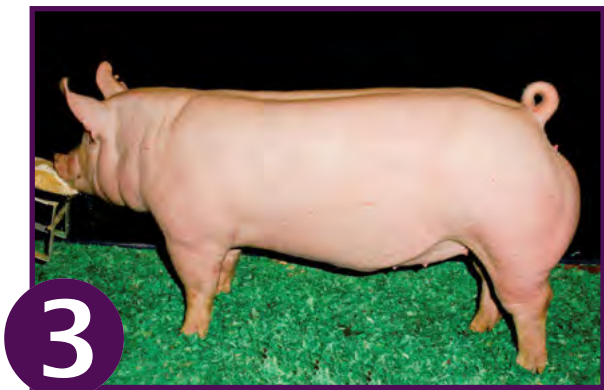
EPDs: +0.25 NBA, -0.01 WTE, 108 SPI



Indexes: 107 SPI, 110 MLI



EPDs: +0.22 NBA, -0.03 WTE, 110 SPI



Indexes: 103 SPI, 105 MLI



EPDs: +0.26 NBA, -0.02 WTE, 111 SPI



Indexes: 108 SPI, 111 MLI



EPDs: +0.29 NBA, +0.02 WTE, 106 SPI

Class 9 Yorkshire Barrows



Class 10 Crossbred Barrows



2013 National Picture Judging Contest

Official Entry Form

- Letter
- Class 1 – Hampshire Boars
- Class 2 – Duroc Boars
- Class 3 – Yorkshire Boars
- Class 4 – Landrace Boars
- Class 5 – Hampshire Gilts
- Class 6 – Duroc Gilts
- Class 7 – Yorkshire Gilts
- Class 8 – Landrace Gilts
- Class 9 – Yorkshire Barrows
- Class 10 – Crossbred Barrows

Instructions

- Rank the animals in each of the 10 classes listed to the left
- Mark the official entry form (left) with the letter that corresponds to your placing for each class
- Only one letter placing per class

1	2	3	4	A
1	2	4	3	B
1	3	2	4	C
1	3	4	2	D
1	4	2	3	E
1	4	3	2	F
2	1	3	4	G
2	1	4	3	H
2	3	1	4	I
2	3	4	1	J
2	4	1	3	K
2	4	3	1	L

3	1	2	4	M
3	1	4	2	N
3	2	1	4	O
3	2	4	1	P
3	4	1	2	Q
3	4	2	1	R
4	1	2	3	S
4	1	3	2	T
4	2	1	3	U
4	2	3	1	V
4	3	1	2	W
4	3	2	1	X



Entries must be mailed or entered online by Feb. 1, 2013

Individual divisions:			For office use only: _____
<input type="checkbox"/> Junior division	<input type="checkbox"/> College division	<input type="checkbox"/> Adult division	
Name _____			
Address _____ City _____ State _____ Zip _____			
Phone _____ E-mail _____			
Team divisions:			For office use only: _____ For office use only: _____
<input type="checkbox"/> 4-H Team	<input type="checkbox"/> FFA Team	<input type="checkbox"/> College Team	
<small>(4-H and FFA team must have four members ONLY; College team must have five members ONLY)</small>			
PRINT team members' names: 1. _____ 2. _____			
3. _____ 4. _____ 5. _____			
School or Club Name _____			
Address _____ City _____ State _____ Zip _____			

Results

Official placings, reasons and contest winners will appear online at www.nationalswine.com after April 15, 2013, and in the April/May 2013 issue of *Seedstock EDGE*. All ties will be broken by the highest score in chronological class order. First- through fifth-place will be named in each division, and plaques will be awarded to the first-place winner of each division.

Divisions

Individual divisions include Junior, Collegiate and Senior. Team divisions include 4-H, FFA, and College. Teams MUST consist of: 4-H and FFA – four total members (no more, no less); College – five total members (no more, no less). There is NO MAXIMUM number of teams per school or club, but each team must have a different name.

Entries

Each individual may enter only ONE time, either as an individual or on one team (i.e., cannot enter on both a 4-H and an FFA team). All team entries will automatically be entered as individuals as well. Enter online at www.nationalswine.com, or mail legible entries to: Picture Judging Contest, 2639 Yeager Rd., West Lafayette, IN 47906.

Additional copies of this form can be downloaded at www.nationalswine.com. No reprints will be mailed from the NSR office. Remember, this is an educational event. Each individual or team member must complete their own entry form, and only one entry should appear on each mailed form. This contest is open to all purebred seedstock enthusiasts in the United States.

Ringside

By Katie Maupin

Seedstock EDGE asks the industry's most elite to share their secrets for success in the show ring with you. E-mail comments to seedstockedge@nationalswine.com.

Don't Settle Until She Settles

DANIEL HENDRICKSON TELLS SEEDSTOCK EDGE HOW TO GET YOUR SHOW GILTS BRED

Hendrickson is a co-owner of Top Cut Genetics, Farmland, Ind., and attends Purdue University's College of Veterinary Medicine.

10. ALL BY THEMSELVES

When bringing a gilt home from the show, it is very important to isolate her for at least one month before introducing her to the rest of the show herd. Ideally, you should also test this gilt for PRRS. If she comes back ELISA positive, then follow-up with a PCR test. If this comes back PCR positive, then consult your veterinarian.

9. IT'S WORTH A SHOT

Vaccinate your gilts with two doses of Parvovirus, Leptospirosis and Erysipelas vaccine approximately five weeks and two weeks before breeding.

8. PEST FREE

Use an injectable dewormer, like Ivomec, to cover the external and most internal parasites. Also, use a dewormer that will cover the whip worms – Ivomec doesn't kill them.

7. CONDITIONING

Most show gilts today are heavier in their condition, when finishing their show career, than ideal for breeding. Make sure to get your gilts back to the proper condition for breeding.

6. EATING RIGHT

After coming off the high-powered show diets, it is important to get your gilts back on a feed that has the proper protein, vitamins, minerals and fat that an open breeding gilt requires at that age.

5. THE BOYS ARE BACK IN TOWN

Gilts should be exposed to a boar and housed in a barn where there is a boar present at all times. It's best to keep the boar at the other end of the barn, and bring him to her at least once a day to let them have contact.

4. MARK YOUR CALENDAR

It's important to keep track of your gilt's cycle. If she begins to cycle a couple months before you plan on breeding her, keep track of how long she shows signs of estrus before beginning to stand, as well as how long she stands in heat. This will help you decide which day to have semen shipped to your farm for the gilt, and when she should be bred.

3. SEMEN STORAGE

You can do everything right taking care of the gilt, but if you don't handle the semen properly, it will all be for nothing. When receiving the semen, make sure you keep it around 63 degrees. Ideally, you would have a semen cooler that maintains the temperature, but this is not always possible. If you do not have a semen fridge, then place the shipment cooler in a cool place, like a basement.

2. BREEDING THE GILT

When the gilt is in standing heat, we recommend breeding her 12 hours later. The second breeding should be done 12-24 hours after the first breeding. This is determined by how long the gilt is standing. Never warm up the semen before breeding the gilt. Take the semen directly from the cooler to the gilt. If possible, have a boar present during breeding to stimulate contractions, which help the semen be more easily accepted.

Do not force the semen through the spirette, but rather let it flow on its own or apply slight pressure to the tube.

1. CROSS YOUR FINGERS

Regardless of your management, there is still a little luck involved.



2012 Eastern Regional



Hamburg, N.Y. • Oct. 11-14, 2012

Events: Purebred and crossbred gilt and barrow shows, showmanship, skillathon and sweepstakes contests

Judge: Justin Rodibaugh, Ind.

No. of participants: 76 from 9 states

Overall gilt won: One-year lease of an Exiss Trailer

Overall barrow won: \$750

Reserve overall gilt and barrow won: \$500

Breed & crossbred champions won: \$250

Breed & crossbred reserve champions won: \$100

Class Placings - Purebred Gilt Show

Place	Exhibitor	Sire	Dam's Sire
GILTS CLASS 1 Duroc			
1	Brandon Stickler, IL	PRH1 SWAG 11-4	RWG9 TURN IT UP 154-1
2	Clayton Stephens, NY	RWG0 LASTING IMPRESSION 264	2SM9 BLINDSIDE 6-4
3	Macee Mecure, OH	MM1 GRUS STAR BUCK 4-4	WBSR0 GATOR 1-4
GILTS CLASS 2 Duroc			
1	Griffin Meeker, IL	DRS1 COMPLETE GAME 9-4	RWG8 PROBLEM SOLVER 197-2
2	Sarah Espey, PA	MM1 TRIPLE ROCK 3-3	RWG8 FULL SHIFT 145-1
3	Cassie Parks, OH	DRS1 COMPLETE GAME 9-4	STN8 STICKOUT 28-12
GILTS CLASS 3 Duroc			
1	Daniel Ammann, IL	BEYE1 PSSS HIGH ROLLER 9-1	RWG8 FULL SHIFT 145-1
2	TJ Parks, OH	WTX1 TEXAS STUD 34-3	ROBB8 ABSOLUTE 2-7
3	Cassie Parks, OH	WTX1 TEXAS STUD 34-3	ROBB8 ABSOLUTE 2-7
GILTS CLASS 4 Duroc			
1	Chasten McConn, PA	JRS9 MANUAL LABOR 96-6	CDLV6 SPECIAL COLLECTION 7-3
2	Griffin Meeker, IL	RWG0 TRIBUTE 26-3	2SM9 BLINDSIDE 6-4
3	Sadie J Compton, IN	BMFIO GRUS BIG BUCK 15-1	RWG8 GRUS CORNHUSKER 57-3
GILTS CLASS 1 Hampshire			
1	Daniel Ammann, IL	BOLN1 HOMEMADE 17-3	YNC8 BLACK TEA 56-3
2	Heather Storer, OH	WALKO OH MY 49-2	GRA8 TCG DARK INTENTIONS 3-8
3	Kayla Clyburn, OH	JDSP1 TITLEIST 3-7	HARK9 OUTRAGE 1-4
GILTS CLASS 2 Hampshire			
1	Katie Stull, OH	JLM1 THE ONE AND ONLY 7-3	HIN9 GOLD STANDARD 32-5
2	Cody Clyburn, OH	JLMO FOCUS 10-4	JM7 PARTY FOUL 34-5
3	Chasten McConn, PA	TSOBO GRUS CAPITAL INVESTMENT	JM9 GRUS TEXAS HOLD EM 15-1
GILTS CLASS 1 Landrace			
1	Maddie Fugate, IL	KTB1 TCG OUTLOOK 7-5	WLHP7 PSSS ROSCOE 20-3
2	Mitchell Concannon, IN	CRSH0 GRUS APOLLO 9-4	SJM9 GRUS BIG SPLASH 1-6
3	Madison Cook, DE	SJM9 GRUS BIG SPLASH 1-6	JMG8 PSSS ZEUS 40-8
GILTS CLASS 1 Yorkshire			
1	Taylor Conley, PA	LAK1 DOUBLE D 6-5	RIY9 BUCK FIFTY 136-1
2	Maddie Fugate, IL	TBRO0 PSSS PRIME CUT 69-2	LFC9 WAY IN 94-4
3	Cody Clyburn, OH	ARK1 TRUE GRIT 119-6	JGR7 BULLETPROOF 345-6



Champion Overall & Champion Yorkshire Gilt
Shown by Paige Stahl, Pa.



Champion Overall & Champion Yorkshire Barrow
Shown by Miley Edelman, Ohio

NJSA



Reserve Champion Overall, Champion & Champion Bred-and-Owned Duroc Gilt
Shown by Brandon Stickler, Ill.



Reserve Champion Duroc Gilt
Shown by Daniel Ammann, Ill.



Reserve Champion Bred-and-Owned Duroc Gilt
Shown by Cassie Parks, Ohio



Champion & Champion Bred-and-Owned Hampshire Gilt
Shown by Daniel Ammann, Ill.



Reserve Champion Hampshire Gilt
Shown by Katie Stull, Ohio



Reserve Champion Bred-and-Owned Hampshire Gilt
Shown by Cody Clyburn, Ohio



Champion Landrace Gilt
Shown by Maddie Fugate, Ill.



Reserve Champion Landrace Gilt
Shown by Mitchell Concannon, Ind.



Champion Bred-and-Owned Landrace Gilt
Shown by Madison Cook, Del.



Reserve Champion Yorkshire Gilt
Shown by Marissa Miller, Pa.



Champion Bred-and-Owned Yorkshire Gilt
Shown by Garrett Lowes, Ind.



Reserve Champion Bred-and-Owned Yorkshire Gilt
Shown by Maddie Fugate, Ill.

Shows & Sales



Champion Crossbred Gilt
Shown by Brandon Stickler, Ill.



Reserve Champion Crossbred Gilt
Shown by Taylor Edelman, Ohio



Reserve Champion Overall & Champion Duroc Barrow
Shown by Aaron Willison, Ind.



Reserve Champion Duroc Barrow
Shown by Austin Ewing, Pa.

GILTS CLASS 2 Yorkshire

- 1 Jaden Bushmire, PA
- 2 Garrett Lowes, IN
- 3 Kayla Clyburn, OH

GILTS CLASS 3 Yorkshire

- 1 Paige Stahl, PA
- 2 Brendan Knoll, NY
- 3 Catherine L Largent, WV

GILTS CLASS 4 Yorkshire

- 1 Marissa Miller, PA
- 2 Allison Gowanlock, NY
- 3 Jaden Bushmire, PA

- WGW9 MOONSHINE 72-4
JGR9 GRUS AIR RAID 159-9
WGW1 EVOLVE 84-10

- RIY9 BUCK FIFTY 136-1
LFC8 GRUS GATEWAY 1-3
ASLS9 ON THE VERGE 4-14

- RIY1 THE GRIZZ 34-4
RIY9 BUCK FIFTY 136-1
BOBLO TCG CAPONE 10-2

- WGW9 MOONSHINE 72-4
TBRO9 MAMMOTH 1-1
WGW8 HEADLINER 58-1

- ARK1 TRUE GRIT 119-6
ARK1 TRUE GRIT 119-6
ARK1 TRUE GRIT 119-6

- BG9 SUPER DIMENSION 24-2
BG9 SUPER DIMENSION 24-2
WGW9 MOONSHINE 72-4

Class Placings - Purebred Barrow Show

Place Exhibitor

BARROWS CLASS 1 Duroc

- 1 Aaron Willison, IN
- 2 Austin Ewing, PA
- 3 Megan Yacks, MI

BARROWS CLASS 1 Hampshire

- 1 Maddie Fugate, IL
- 2 Mitchell Concannon, IN
- 3 Heather Storer, OH

BARROWS CLASS 1 Landrace

- 1 Wyatt Hansen, MI
- 2 Maddie Fugate, IL

BARROWS CLASS 1 Yorkshire

- 1 Miley Edelman, OH
- 2 Dillon Knoll, NY
- 3 Maddie Fugate, IL

Sire

- BMF10 GRUS BIG BUCK 15-1
ADJNO LIFE BLOOD 6-9
SMTSO GRUS V10 6-9

- SLLYO ALL ABOARD 6-2
FUNK1 GRUS WIMBLEDON 7-3
ECO WOODY 122-2

- CRSHO GRUS APOLLO 9-4
KTBO SUBSTITUTION 2-7

- ARK1 FINAL DRIVE 130-10
TBROO DOG KNOTT 77-4
WGW1 EVOLVE 84-10

Dam's Sire

- STN8 STICKOUT 28-12
HDO SLUG 10-6
MYD7 GRUS FULL BLOWN 12-7

- GMW0 PREDATOR 7-9
GMW8 GRUS BAILOUT 1-2
EBM8 HUGGY BEAR 9-7

- SJM9 GRUS BIG SPLASH 1-6
CR9 UNDERDOG 1-2

- LFC7 HEDGEPOST 31-8
JGR6 TANK 9-5
JGR8 HAWKEYE 210-8

Class Placings - Crossbred Show

Place Exhibitor

GILTS CLASS 1 Crossbred

- 1 Brandon Stickler, IL
- 2 Morgan Miller, PA
- 3 Mindy Cook, DE

GILTS CLASS 2 Crossbred

- 1 Sadie Compton, IN
- 2 Jaden Bushmire, PA
- 3 Brendan Knoll, NY

Place Exhibitor

GILTS CLASS 3 Crossbred

- 1 Taylor Edelman, OH
- 2 Maddie Fugate, IL
- 3 Francesca Mucci, PA

BARROWS CLASS 1 Crossbred

- 1 Maddie Fugate, IL
- 2 Conner Smock, OH
- 3 Mitchell Concannon, IN



Champion Hampshire Barrow
Shown by Maddie Fugate, Ill.



Reserve Champion Hampshire Barrow
Shown by Mitchell Concannon, Ind.



Champion Landrace Barrow
Shown by Wyatt Hansen, Mich.



Reserve Champion Landrace Barrow
Shown by Maddie Fugate, Ill.



Reserve Champion Yorkshire Barrow
Shown by Dillion Knoll, N.Y.



Champion Crossbred Barrow
Shown by Maddie Fugate, Ill.




Reserve Champion Crossbred Barrow
Shown by Conner Smock, Ohio

BRED GILT SALE

REAL MCCOY GENETICS ONLINE SALE
 DECEMBER 9TH, 2012 8PM EST


LARGEST AND BEST SET OF YOUNG SOWS AND BRED GILTS WE HAVE EVER OFFERED

Grand Champion



2012 OHIO STATE FAIR

Grand Champion



2012 KANSAS STATE FAIR

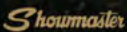
REAL MCCOY GENETICS

WWW.REALMCCOYGENETICS.COM

TOLL FREE 866-4MUSCLE // JIM 740-572-0271 // MIKE 740-572-0272

2012 RECENT HIGHLIGHTS

- Ohio State Fair Grand and Reserve Grand Champion
- Kansas State Fair Grand Champion
- Maryland State Fair Grand Champion
- West Virginia State Fair Reserve Grand Champion



Shows & Sales



Novice Skillathon – Top 10

Front (r-l): 1st: Kendra Marty, Ohio; 2nd: Riley Stull, Ohio; 3rd: Johnathan Smock, Ohio; 4th: Chasten McConn, Pa.; 5th: Ty Goodwin, Mich. Back (r-l): 6th: Rachel Harper, N.Y.; 7th: Kamryn Harper, N.Y.; 8th: Hayley Cranwell, N.Y.; 9th: Rylee Ewing, Pa.; 10th: Logan Fortin, Pa.



Junior Skillathon – Top 10

Front (r-l): 1st: Madison Cook, Del.; 2nd: Maddie Fugate, Ill.; 3rd: Emily Cranwell, N.Y.; 4th: Austin LaBombard, N.Y.; 5th: Katie Stull, Ohio Back (r-l): 6th: Megan Cranwell, N.Y.; 7th: Dillon Knoll, N.Y.; 8th: Aubrey Gerhardt, N.Y.; 9th: Melissa Keller, N.Y.; 10th: Conner Smock, Ohio



Intermediate Skillathon – Top 10

Front (r-l): 1st: Kayla Clyburn, Ohio; 2nd: Allison Gowanlock, N.Y.; 3rd: Taylor Conley, Pa.; 4th: Mindy Cook, Del.; 5th: Kaitlin Swayne, Ohio Back (r-l): 6th: Garrett Livingston, Pa.; 7th: Brendan Knoll, N.Y.; 8th: Megan Anderson, Pa.; 9th: Mitchell Concannon, Ind. Not Pictured: 10th: Andy Bontrager, N.Y.



Senior Skillathon – Top 5

Front (r-l): 1st: Daniel Ammann, Ill.; 2nd: Heather Storer, Ohio; 3rd: Bridget McConn, Pa.; 4th: Courtney Gasport, N.Y.; 5th: Sarah Espy, Pa.



Novice Showmanship – Top 10

Front (l-r): 1st: Johnathan Smock, Ohio; 2nd: Kendra Marty, Ohio; 3rd: Riley Stull, Ohio; 4th: Ty Goodwin, Mich.; 5th: Lainey Mercure, Ohio Back (l-r): 6th: Chasten McConn, Pa.; 7th: Miley Edelman, Ohio; 8th: Rachael Harper, N.Y.; 9th: Kamryn Harper, N.Y.; 10th: Logan Fortin, Pa.



Junior Showmanship – Top 10

Front (l-r): 1st: Conner Smock, Ohio; 2nd: Melissa Keller, N.Y.; 3rd: Katie Stull, Ohio; 4th: Madison Cook, Del.; 5th: Marissa Miller, Pa. Back (l-r): 6th: Austin Ewing, Pa.; 7th: Austin LaBombard, N.Y.; 8th: Tessa Stahl, Pa.; 9th: Macee Mercure, Ohio Not Pictured: 10th: Maddie Fugate, Ill.



Intermediate Showmanship – Top 10

Front (l-r): 1st: Brandon Stickler, Ill.; 2nd: Mindy Cook, Del.; 3rd: Mitchell Concannon, Ind.; 4th: Taylor Conley, Pa.; 5th: Kayla Clyburn, Ohio Back (l-r): 6th: Garrett Lowes, Ind.; 7th: Brendan Knoll, N.Y.; 8th: Clayton Stephens, N.Y.; 9th: Allison Gowanlock, N.Y.; 10th: Morgan Miller, Pa.



Senior Showmanship – Top 7

Front (l-r): 1st: Daniel Ammann, Ill.; 2nd: Sarah Espy, Pa.; 3rd: Heather Storer, Ohio; 4th: Courtney Luckman, N.Y. Back (l-r): 5th: Shannon Spargo, N.Y.; 6th: Francesca Mucci, Pa.; 7th: Bridget McConn, Pa.



Novice Sweepstakes – Top 9

Front (r-l): 1st: Kendra Marty, Ohio; 2nd: Riley Stull, Ohio; 3rd: Johnathan Smock, Ohio; 4th: Ty Goodwin, Mich.; 5th: Chasten McConn, Pa. Back (l-r): 6th: Miley Edelman, Ohio; 7th: Lainey Mercure, Ohio; 8th: Gabriel Fortin, Pa.; 9th: Logan Fortin, Pa.



Junior Sweepstakes – Top 9

Front (r-l): 1st: Madison Cook, Del.; 2nd: Katie Stull, Ohio; 3rd: Conner Smock, Ohio; 4th: Maddie Fugate, Ill. Back (r-l): 5th: Austin LaBombard, N.Y.; 6th: Melissa Keller, N.Y.; 7th: Marissa Miller, Pa.; 8th: Dillon Knoll, N.Y.; 9th: Macee Mercure, Ohio



Intermediate Sweepstakes – Top 10

Front (r-l): 1st: Kayla Clyburn, Ohio; 2nd: Taylor Conley, Pa.; 3rd: Allison Gowanlock, N.Y.; 4th: Mindy Cook, Del.; 5th: Mitchell Concannon, Ind. Back (r-l): 6th: Brandon Stickler, Ill.; 7th: Brendan Knoll, N.Y.; 8th: Kaitlin Swayne, Ohio; 9th: Garrett Lowes, Ind.; 10th: Clayton Stephens, N.Y.



Senior Sweepstakes – Top 5

Front (l-r): 1st: Daniel Ammann, Ill.; 2nd: Heather Storer, Ohio; 3rd: Sarah Espy, Pa.; 4th: Courtney Luckman, N.Y.; 5th: Bridget McConn, Pa.

Illini Winter Classic

ALL-BREED BRED GILT SALE

DECEMBER 15

**FFA
SALE BARN
SENECA, ILLINOIS**

**Show: 10:30 a.m.
Sale: 1:30 p.m.**

Now accepting consignments

**Entry Deadline:
December 1**

Contact Julie Olson for an entry blank
and rules and regulations.

Event sponsored by:

Illinois
Duroc
Breeders
Association

Julie Olson
Secretary-Treasurer
16699 1500 North Ave.
Princeton, IL 61356
(815) 303-2666 - cell
illinoisduroc@gmail.com

Auctioneer:
Dan Naughton, Ill.
#441.000312
NSR Representative:
Michael Lackey
(765) 427-3733

Shows & Sales

2012 Tennessee State Fair

Nashville • Sept. 8-9 • Judges: Daniel Hendrickson, Ind.

Photos courtesy of the Tennessee State Fair



Supreme Champion Gilt & Champion Duroc Gilt
Shown by Conlee Lee



Res. Supreme Champion Gilt & Champion Yorkshire Gilt
Shown by Bailey B. Baker



Champion Hampshire Gilt
Shown by Bailey B. Baker

Supreme Champion & Champion Crossbred Barrow: Shown by Morgan Lehnert
Res. Supreme Champion & Res. Champion Crossbred Barrow: Shown by Bailey B. Baker

Champion Duroc Barrow: Shown by Abigail Bartholomew
Champion Hampshire Barrow: Shown by Elizabeth Maness
Champion Yorkshire Barrow: Shown by Bailey B. Baker

Designed by
Seedstock
EDGE

A LEAGUE OF THEIR OWN

Bred Gilt Consignment Sale!

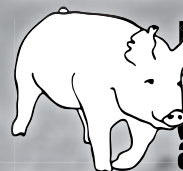
DECEMBER 4-5, 2012

Open to all.

Must consign at least one purebred Duroc gilt.

- \$25/head listing fee
- 15% commission

Sale hosted by:



BUYER'S CHOICE
auction

NSR-BuyersChoiceAuction.com

Contact Eric Foland for more information: 765.461.9469



IndianaDurocs.com

Shows & Sales

2012 Cow Palace Grand Nat'l

Daly City, Calif. • Oct. 18-21 • Judge: Bobby Listen, Okla.



Grand Champion Classic Hog & Champion Market Hog
Shown by Matteo Abreu



Res. Grand Champion Classic Hog & Champion Progress Hog
Shown by Alexius Watje



Champion Prospect Hog
Shown by Matt Conant



Res. Champion Prospect Hog
Shown by Nelson Hanson



Res. Champion Progress Hog
Shown by Ashley Pfyl



Res. Champion Market Hog
Shown by Matt Conant



Supreme Champion Gilt
Shown by Alexa Sylwesiuk



Supreme Champion Boar
Shown by Nelson Hanson



Res. Supreme Champion Gilt
Shown by Lucia Abreu



Res. Supreme Champion Boar
Shown by Nelson Hanson

Shows & Sales

2012 State Fair of Texas

Dallas • Sept. 30 & Oct. 3-4 • Judges: Barrows: Garry Ghilds, Ga.
Gilt: Brett Beyers, Ill.

Photos courtesy of the State Fair of Texas



**Grand Champion Barrow Overall
& Champion Dark Crossbred Barrow**
Shown by Morgan McCullough



**Res. Grand Champion Barrow Overall
& Champion Other Crossbred Barrow**
Shown by Tre Green



Champion Duroc Barrow
Shown by Shelby McCamey



Champion Hampshire Barrow
Shown by Madison Miller



Champion Yorkshire Barrow
Shown by Peyton Hill



Res. Champion Duroc Barrow
Shown by Lane Harrington



Res. Champion Hampshire Barrow
Shown by Mason Delong



Res. Champion Yorkshire Barrow
Shown by Chesney Wolf



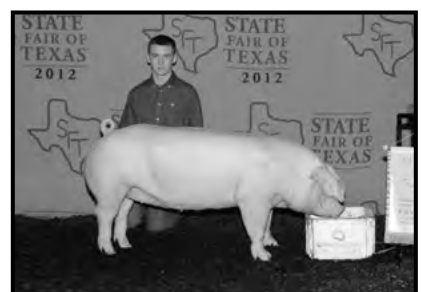
**Grand Champion Gilt Overall &
Champion Yorkshire Gilt**
Shown by Jimmy Guerry



**Res. Grand Champion Gilt Overall &
Champion Duroc Gilt**
Shown by Mason Bickerstaff



Champion Hampshire Gilt
Shown by Porsche Watson



Champion Landrace Gilt
Shown by Jimmy Guerry



Res. Champion Duroc Gilt
Shown by Lindsey Phillips



Res. Champion Hampshire Gilt
Shown by Colby Seeker



Res. Champion Landrace Gilt
Shown by Tegan Guerry



Res. Champion Yorkshire Gilt
Shown by Garrett Holland

PENNSYLVANIA FARM SHOW & EIGHT-BREED BRED GILT SALE

Bred Gilt Show: Friday, Jan. 4, 10 a.m.

Sale: Saturday, Jan. 5, 9 a.m.

Farm Show Complex • Harrisburg, Pa.

All gilts will have a pedigree. Terms are cash or check with a bank letter for non-registered buyers.



Supreme Champion & Champion Yorkshire Gilt,
2012 Pennsylvania Farm Show
Shown by James Parlett & Son, Pa.

Judge: Tom Farrer
Auctioneer: Harry Bachman, Pa. • 717.821.1638
NSR Rep.: Ralph Doak • 765.427.9910
CPS Rep.: Jack Wall • 309.945.3312
Farm Show Complex • 717.787.2905

180 bred gilts bred for pure and crossbred litters.
Sale order: Hampshire, Spot, Poland, Chester White,
Yorkshire, Berkshire, Landrace, Duroc

For more information, contact Harry Bachman, Ralph Doak or Rodger Bankert (717.632.4722).

Designed by
EDGE

Shows & Sales

2012 Keystone Int'l Livestock Exposition

Harrisburg, Pa. • Oct. 4-5

Duroc Show • Judge: Brice Conover, Iowa

Grand Champion Boar: Holloway Genetics on 1st Class 23 Boar

Res. Grand Champion Boar: Holloway Genetics on 1st Class 24 Boar

Premier Exhibitor: Austin Stoner, Md.

Class 23 Feb. Boars (3 shown)

1. Holloway Genetics, Pa.
2. Stull Hamp Farm, Ohio
3. Austin Stoner, Md.

Class 24 March Boar (6 shown)

1. Holloway Genetics, Pa.
2. Lantern Light Farm, Md.
3. Austin Stoner, Md.

Class 27 Jan. Gilt (7 shown)

1. Austin Stoner, Md.
2. Catherine Largent, W. Va.
3. Busy Acre Farms, Pa.

Class 28 Feb. Gilts (8 shown)

1. Holloway Genetics, Pa.
2. Brandon Gruber, Md.
3. Stull Hamp Farm, Ohio

Class 29 March Gilts (8 shown)

1. Stull Hamp Farm, Ohio
2. Rodney Fisher, Pa.
3. Austin Stoner, Md.

Class 30 April Gilts (4 shown)

1. Austin Stoner, Md.
2. Austin Stoner, Md.
3. Busy Acre Farms, Pa.

Grand Champion Gilt: Holloway Genetics on 1st Class 28 Gilt

Res. Grand Champion Gilt: Austin Stoner on 1st Class 30 Gilt

Hampshire Show • Judge: Brice Conover, Iowa

Grand Champion Boar: Stull Hamp Farm on 1st Class 34 Boar

Res. Grand Champion Boar: Stull Hamp Farm on 1st Class 35 Boar

Premier Exhibitor: John Strawbridge, Pa.

Class 34 Feb. Boars (3 shown)

1. Stull Hamp Farm, Ohio
2. John Strawbridge, Pa.
3. John Strawbridge, Pa.

Class 35 March Boar (6 shown)

1. Stull Hamp Farm, Ohio
2. James T. Parlett & Son, Pa.
3. Anderson Farm, Pa.

Class 38 Jan. Gilt (4 shown)

1. Bobola Farms, Del.
2. Zachary Mearkle, Pa.
3. John Strawbridge, Pa.

Class 39 Feb. Gilts (2 shown)

1. John Strawbridge, Pa.
2. John Strawbridge, Pa.

Class 40 March Gilts (3 shown)

1. James T. Parlett & Son, Pa.
2. John Strawbridge, Pa.
3. John Strawbridge, Pa.

Class 41 April Gilts (2 shown)

1. John Strawbridge, Pa.
2. John Strawbridge, Pa.

Grand Champion Gilt: Bobola Farms on 1st Class 38 Gilt

Res. Grand Champion Gilt: John Strawbridge on 1st Class 39 Gilt

Landrace Show • Judge: Brice Conover, Iowa

Grand Champion Boar: Grant Lazarus III on 1st Class 46 Boar

Res. Grand Champion Boar: Grant Lazarus III on 1st Class 45 Boar

Premier Exhibitor: Grant Lazarus III, Pa.

Class 45 Feb. Boars (1 shown)

1. Grant Lazarus III, Pa.

Class 46 March Boar (2 shown)

1. Grant Lazarus III, Pa.
2. Grant Lazarus III, Pa.

Class 50 Feb. Gilt (1 shown)

1. Grant Lazarus III, Pa.

Class 51 March Gilts (2 shown)

1. Grant Lazarus III, Pa.
2. Grant Lazarus III, Pa.

Grand Champion Gilt: Grant Lazarus III on 1st Class 50 Gilt

Res. Grand Champion Gilt: Grant Lazarus III on 1st Class 52 Gilt

Class 52 April March Gilts (2 shown)

1. Grant Lazarus III, Pa.
2. Grant Lazarus III, Pa.

Yorkshire Show • Judge: Brice Conover, Iowa

Grand Champion Boar: Bell Farms Ag/SEO on 1st Class 78 Boar

Res. Grand Champion Boar: Bell Farms Ag/SEO on 2nd Class 78 Boar

Premier Exhibitor: Busy Acres Farm, Pa.

Class 78 Feb. Boars (6 shown)

1. Bell Farms Ag/SEO, Ohio
2. Bell Farms Ag/SEO, Ohio
3. Busy Acre Farms, Pa.

Class 79 March Boar (3 shown)

1. Lori Long, Md.
2. Busy Acre Farms, Pa.
3. Busy Acre Farms, Pa.

Class 82 Jan. Gilt (10 shown)

1. Catherine Largent, W. Va.
2. Tigner Farms, Del.
3. Jeffery Norris II, Pa.

Class 83 Feb. Gilts (13 shown)

1. Paul Inskeep, Md.
2. Bell Farms Ag/SEO, Ohio
3. Pfautz Show Pigs, Pa.

Class 84 March Gilts (5 shown)

1. Kristi Long, Md.
2. Ashley Lescalleet, Md.
3. Busy Acre Farms, Pa.

Class 85 April Gilts (3 shown)

1. Pfautz Show Pigs, Pa.
2. Busy Acre Farms, Pa.
3. Busy Acre Farms, Pa.

Grand Champion Gilt: Catherine Largent on 1st Class 82 Gilt

Res. Grand Champion Gilt: Paul Inskeep on 1st Class 83 Gilt



Champion Duroc Boar
Shown by Holloway Genetics



Champion Duroc Gilt
Shown by Holloway Genetics



Res. Champion Duroc Gilt
Shown by Austin Stoner



Champion Hampshire Boar
Shown by Stull Hamp Farm



Champion Hampshire Gilt
Shown by Bobola Farms



Res. Champion Hampshire Boar
Shown by Stull Hamp Farm



Res. Champion Hampshire Gilt
Shown by John Strawbridge



Champion Landrace Boar
Shown by Grant Lazarus III



Champion Landrace Gilt
Shown by Grant Lazarus III



Champion Yorkshire Boar
Shown by Bell Farms Ag/SEO



Champion Yorkshire Gilt
Shown by Catherine Largent



Res. Champion Yorkshire Boar
Shown by Bell Farms Ag/SEO



Res. Champion Yorkshire Gilt
Shown by Paul Inskeep

NOT PICTURED:
Res. Champion Duroc Boar
Shown by Holloway Genetics

Res. Champion Landrace Boar
Shown by Grant Lazarus III

Res. Champion Landrace Gilt
Shown by Grant Lazarus III




Dan E. Baker
AUCTIONEER

765.583.2466

7714 W 500 N
West Lafayette, IN 47906

MIKE BERGER
Auctioneer
Since 1986




574.850.5605
408 King Rd.
Bremen, IN 46506

www.bergerauctioneering.net



Clayton
Agri-Marketing, Inc.
Exporter of quality swine genetics



Tony Clayton
Auctioneer

2507 Industrial Drive
Jefferson City, MO 65109
573.659.8560
Fax: 573.659.8548

E-mail: tclaycami@aol.com
www.claytonagri-mktg.com

AUCTIONEER



Let Your Next Sale
Be Your Best One!



Al Conover

P.O. Box 9 • Baxter, IA 50028
Office: 641.227.3537 • Cell: 515.491.8078
Home: 641.227.3686

CHAD DAY
AUCTIONEER



269 South River Road
Covington, IN 47932

260.388.2876

Auctioneer / Sale Manager

Talk fast...
Sell high...
Have fun...



Col. Jon Fisher

800.282.0428

968 Co. Rd. 1000 N., Champaign, IL 61821

The SHOWBOX

OFFICIAL PUBLICATION OF THE
TEXAS CLUB CALF ASSOCIATION TEXAS CLUB PIG ASSOCIATION
TEXAS CLUB LAMB ASSOCIATION TEXAS CLUB MEAT GOAT ASSOCIATION
GEORGIA CLUB CALF PRODUCERS ASSOCIATION

The Showbox Magazine

No matter what your business or
what you are promoting,
The Showbox reaches the people who are
purchasing your products.

We don't just sell advertising –
we help create new customers.

www.theshowbox.com

1512F Loop 304
Crockett, Texas 75835
Carrabba@aol.com
Cell 713-416-2314

936-544-2787
936-544-3549 fax
Scooter@theshowbox.com
Cell 281-797-5842

Karenh@theshowbox.com
Cell 936-222-6779



800.282.0428

Check out all of our
showpig sires at
[www.showpigs.com!](http://www.showpigs.com)

PRAIRIE STATE SEMEN INC.
968 Co. Rd. 1000 N. • Champaign, IL 61822

Ron Kreis

AUCTIONEER
740.796.5242
ADAMSVILLE, OHIO



2005 WORLD CHAMPION

Linnebur

INC.

Auctions

- Livestock
- Antiques
- Farm Equipment
- Estate Dispersals

Serving the auction industry for over 25 years!

Steve Linnebur
Byers, Colo.
303.822.9298

Stephen Linnebur
Flora, Ind.
303.549.6557

www.linneburauctions.com

Spence Auction Service and Showpigs



William M. Spence

4852 S. 675 E. • Walkerton, IN 46574
Home: 219.369.8654 • Cell: 574.339.0139

Naughton Auction Service



Mark It Sold!
Machinery, Livestock, Household.
For all your sale day needs.

Dan Naughton
Auctioneer/Ringman
217.648.2356 | 217.304.6502 cell
Atlanta, IL

Howard Parrish

419.553.6042



Contact me for open dates.

05140 Co. Rd. J
Edon, OH 43518

WILLIAMS

Land & Cattle Auction Co.



Mike Williams • Owner/Auctioneer
18130 Brush Creek Road
Higginsville, MO 64037
660.584.5210 • (cell) 816.797.5450
mwauctions@ctcis.net

Since 1980

Purple Circle

AMERICA'S YOUTH LIVESTOCK MAGAZINE

806.499.3749 • 806.499.3759 fax
14200 FM 1062 - Canyon, Texas 79015
www.purplecircle.com • purplecircle@midplains.coop

Who

What

When

Where

Why

America's Premier Youth Livestock Magazine since 1980 serving the Youth and those involved with the Junior Livestock Show Industry. With no added costs we'll advertise your cattle, goats, hogs, lambs, show supplies, feed or trailers - whatever you have to sell we'll get the word out to bring in the buyers. Besides our magazine we can also put together your brochures.

Give us a call for all your advertising needs
806.499.3749.

24 hours a day / 7 days a week -
365 days a year since 1980 -
on the internet and in our publication.

Nationwide with subscribers in 45 states,
Canada and Mexico.
Free distribution to all major livestock shows,
numerous state fairs and dozens of jackpots and sales.

Because you want to spend your hard earned advertising dollars with the BEST! It's a smart move to advertise with the Purple Circle - we get the job done for the best prices! The Purple Circle serves as a showcase, a public arena, from which people from coast to coast can promote their livestock and products and to acknowledge 4-H and FFA exhibitors from other areas of the Country.

You'll also keep up to date with the latest trends and find what you are looking for by subscribing to Purple Circle.



Livestock
Real Estate
Farm Equipment
And Other
Significant
Assets!

WENDT

KEVIN WENDT
AUCTIONEER CAI

Office: 614.789.1627
Cell: 419-566-1599
www.thewendtgroupp.com

23855 SR 161
Irwin, OH 43029



David Mullins

Licensed Auctioneer Danville, Ind.

317.503.2798
www.dmauctioneer.com

Seedstock Source

Your personal access to the best purebred Duroc, Hampshire, Landrace and Yorkshire genetics in the United States.

ARKANSAS

FLYING J SHOW HOGS
Heath Jones
20909 Summers Mtn. Rd.
Lincoln 72744
Phone: 479.824.5837
(Durocs, Yorks)

CALIFORNIA

BAR-ONE FARMS
Wes Barone
6093 W. Mountain View Ave.
Caruthers 93609
Phone: 408.981.4881
(Durocs, Hamps, Yorks)

BEN TERRY
3540 Stony Point Rd.
Santa Rosa 95407
Phone: 707.584.5374
(Durocs, Landrace)

BOYTOR SWINE FARM
14811 Chandler St.
Corona 92880
Phone: 909.737.8008
Fax: 909.808.0347
(Hamps, Yorks)

CALIFORNIA STATE UNIVERSITY, CHICO
Don Sinnott, Swine Technician
Phone: 530.898.6025
E-mail: dsinnott@csuchico.net
Clay Carlson, Faculty
Phone: 530.898.6694
E-mail: ccarlson2@csuchico.edu
(Yorks)

CY A. HAWKINS
2299 Zumwalt Rd.
P.O. Box 1326
Williams 95987
Phone: 530.473.2264
(Hamps, Yorks, Crossbreds)

DAY'S SWINE FARM
Tony Day
24950 Ave. 212
Lindsay 93247
Phone: 559.568.0083
(Durocs, Hamps, Landrace, Yorks)

DONALD NAVES & FAMILY
Donald & Michelle Naves
3922 Sycamore Lane
Pleasant Grove 95668
Phone: 916.799.5259
(Hamps, Yorks)

GOLDEN STATE GENETICS
Rachelle, John & June Bailey
445 S. Blaker Rd.
Turlock 95380
Phone: 209.656.9550
(Durocs, Hamps, Landrace, Yorks)

HOMEN FARMS
Henry Homen
3749 Blue Gum Rd.
Modesto 95358
Phone: 209.526.2337
(Durocs, Hamps, Yorks)

JUBE'S HAMPSHIRE
Jube Begley
815 Scenic Ave.
Santa Rosa 95407
Phone: 707.585.0538
(Hamps, Yorks)

KHRISTOFER'S DUROCS
Khristofer Hawkes
4481 Ross Rd.
Sebastopol 95472
Phone: 707.823.3047
(Durocs, Yorks)

LOIN EYE FARMS
Paul J. Fernandes Jr.
1365 Tawny Lane
Turlock 95380
Phone: 209.664.0309
Fax: 209.664.0309
(Hamps, Yorks)

LUCKY GENETICS
Andrew & John Turek
25175 New York Ave.
Corning 96021
Phone: 530.824.4731
Andrew cell: 530.510.9322
(Hamps, Yorks)

MARIO & MICHELE BUONI
10400 Old River Rd.
Bakersfield 93311-9734
Phone: 661.397.8940
(Durocs, Hamps, Yorks)

MARK & SANDY OTTENWALTER
2260 Lurline Ave.
Colusa 95932
Phone: 530.458.5700
(Hamps, Yorks)

MODESTO JR. COLLEGE
John Mendes
435 College Ave.
Modesto 95350
Phone: 209.575.6205
Fax: 209.575.6199
(Durocs, Hamps, Yorks)

MOENCH FARMS
Wilbert & Dennis Moench
24701 Ave. 106
Terra Bella 93270-9716
Phone: 559.535.4347
Fax: 559.535.4347
(Durocs, Hamps, Yorks)

MURPHY FARM
Cameron & Andrew Murphy
P.O. Box 105
Bodega 94922
Phone: 707.876.3364
Cell: 707.953.6174
(Hamps, Yorks)

NO LIMIT GENETICS
Adam Mendoza & Becky Garner
2500 S. Walton Ave.
Yuba City 95993-9704
Phone: 530.844.2932
Cell: 209.602.6106
(Durocs, Hamps, Yorks)

PANERO FARMS
Rhys & Jeanine Panero
11935 S. Van Allen Rd.
Escalon 95320
Phone: 209.838.7570
Rhys cell: 209.604.7594
E-mail: panerofarms@yahoo.com
(Yorks)

POWERHOUSE FARMS
Nathan & Kim Copp
2129 S. 10th St.
Los Banos 93635
Phone: 209.827.0460
Cell: 559.280.0119
(Durocs, Hamps, Landrace, Yorks)

REEDLEY COLLEGE
David Lopes
995 N. Reed Ave.
Reedley 93654
Phone: 559.638.0319
(Durocs, Yorks)

RIVER VIEW GENETICS
Tom Millar Jr.
8209 Co. Rd. 29
Glenn 95943
Phone: 530.934.0220
(Durocs, Hamps, Yorks)

SMALL TOWN GENETICS
James & Kara Backman
2812 N. Hickman Rd.
Denair 95316
Phone: 209.620.4106 or
209.667.4144
(Durocs, Hamps, Yorks)

WEAVER FARMS
Steve & Pat Weaver
5801 Lambert Rd.
Elk Grove 95757
Phone: 916.684.2143
Fax: 916.684.0972
(Durocs, Hamps, Yorks)

FLORIDA

MIKE WILLIAMS SHOWPIGS
Mike, Beth & Bud Williams
3816 NW 216th St.
Lawtley 32058
Phone: 904.710.9259
(Hamps, Yorks, Crossbreds)

GEORGIA

ALTON & NANCY ANDREWS
2681 Pierce Chapel Rd.
Cairo 39827
Phone: 229.377.8373
Cell: 229.224.4163
(Hamps, Yorks, Crossbreds)

PAT & BONNIE THRIFT & SON
Rt. 3, Box 1400
Folkston 31537
Phone: 912.496.2131
Fax: 912.496.2131
(Hamps, Yorks)

ILLINOIS

A&W GENETICS
Ande DeSollar/Ty Olson
1117 Lafayette St.
Beardstown 62618
Phone: 217.323.5269
(Durocs, Yorks)

ARMSTRONG GENETICS
JR & Ali Armstrong
Rt. 1, Box 57
Huntsville 62344
Phone: 217.667.2117
Cell: 217.440.7268
(Hamps, Yorks, Chesters, Spots)

BARNETT FARMS
Rick & Dianne Barnett
1506 St. Rt. 100
Bluffs 62621
Phone: 217.754.3936
Cell: 217.248.1006
(Durocs, Hamps, Yorks, Poland, Spots)

BEHRMANN HOG FARM
Scott, Cliff & Tyler Behrmann
303 E. St. Rt. 161
Albers 62215
Plant: 618.248.5151
Farm: 618.228.7073
(Durocs, Hamps, Landrace, Yorks)

BOWEN YORKSHIRES
Brent & Kelly Bowen
16525 N. 900 E. Rd.
Bloomington 61704
Phone: 309.963.4745
(Hamps, Yorks)

CEDAR RIDGE FARMS INC.
The Grohmanns
5535 Cedar Ridge Lane
Red Bud 62278
Phone: 618.473.2325
Fax: 618.473.2264
(Durocs, Hamps, Landrace, Yorks)

CENTER PRAIRIE GENETICS
Tom Olson
16250 U.S. Hwy. 6
Princeton 61356
Cell: 815.303.4625
Farm: 815.875.3689
(Durocs, Hamps, Polands, Yorks)

CHARLES PETERSON
P.O. Box 148
Sandwich 60548
Phone: 815.786.8149
(Durocs, Hamps, Yorks)

CHET & CLAIRE BRINKMEIER
11100 W. Loren Rd.
Pearl City 61062
Chet: 815.443.2046
(Durocs, Hamps, Yorks)

D&H SHOWPIGS
Dan & Holly Hartmann
21105 Hartmann Rd.
Maple Park 60151
Phone: 815.895.4130
Cell: 815.751.1052
(Hamps, Yorks)

DENNY SHOW PIGS
Alex Denny
345 N. Co. Rd. 3050
Augusta 62311
Phone: 217.392.2442
(Hamps)

DICK & ZACK HOWELL
Dan & Zack
Maroa 61756
Dick: 217.935.8108
Zack: 217.935.6877
(Durocs, Hamps, Yorks)

DOWN FAMILY SHOWPIGS
Brian Down
3848 N. 1600 E. Rd.
Cabery 60919
Phone: 815.949.1667
Cell: 217.823.3943
(Hamps, Yorks)

GARLISCH SHOWPIGS
Scott & Dick Garlisch
28149 E. CR 1800 N.
Forest City 61532
Phone: 309.597.2291
Cell: 217.414.8470
(Hamps, Landrace, Yorks, Polands, Crossbreds)

GLENN SADDORIS
25405 115th Ave. N.
Port Byron 61275
Phone: 309.523.3608
(Hamps)

**JOHN & MELISSA
LIVERMORE & FAMILY**
Rt. 1, Box 23
Media 61460
Phone: 309.924.1936
Cell: 309.221.2411
(Hamps, Yorks)

JORDAN MCGREW
17241 N. 24th Rd.
Good Hope 61438
Phone: 309.772.2694
(Durocs, Hamps, Landrace, Yorks)

KATELYN JONES
12859 N. 3550 E. Rd.
Saybrook 61770
Phone: 309.727.1284
(Durocs)

KYLE & KASSANDRA KNAUTH
1253 N. 2600 E. Rd.
Milford 60953
Phone: 815.889.4363
(Landrace, Yorks)

LORENZEN FARMS
Tracy Lorenzen
11428 E. 2400 Rd.
Chrisman 61924
Phone: 217.269.2011
(Yorks)

LYLE DORJAHN & FAMILY
1525 N. Co. Rd. 250 E.
Atwood 61913
Cell: 217.725.4638
E-mail: lyled@hotmail.com
(Durocs)

MALONE SHOW PIGS
Roger, Mary Ann & Miranda
2076 Knox Rd. 2250 N.
Victoria 61485
Phone: 309.879.2550
Cell: 309.361.1119
(Durocs, Yorks, Crossbreds)

MCBRIDE HAMPS
David, Douglas & Nolan
1002 Il. Rt. 97
Gilson 61436
David: 309.221.4797
Douglas: 309.221.8295
Nolan: 309.221.0972
(Hamps)

MILLS BROTHERS
Daniel & David Mills
Rt. 1, Box 413
Clinton 61727
Phone: 217.935.4803
Cell: 309.824.3040
(Hamps, Yorks)

MITCH SPRINGER & FAMILY
179 E. 1300 N. Rd.
Stanford 61774
Phone: 309.392.2278
(Yorks)

MOORE'S DUROCS
Russell Moore
Rt. 1, Box 109
Ellery 62833
Phone: 618.445.3944
(Durocs)

NORMAN BROS. & SON
Greg & Grant Norman
7234 E. 2700th Rd.
Sidell 61876
Phone: 217.887.2506
Cell: 217.822.2506
(Durocs, Hamps, Yorks)

PETER FARMS
Mark Peter
1969 E. 1250th St.
Mendon 62351
Phone: 217.936.2656
(Durocs, Hamps, Yorks)

PORCINE PARTNERS
Dan & Lisa Yates
1064 E. 750 N. Rd.
Cissna Park 60924
Phone: 815.228.3505
(Durocs, Hamps, Landrace, Yorks)

RANGE & THEOBOLD
Bill Range
6862 Fountain Oak Lane
Waterloo 62298
Phone: 618.973.1070
(Durocs, Hamps, Yorks, Crosses)

SCHULER FAMILY FARMS
Paul Schuler
29801 E. 2600 N. Rd.
Lexington 61753
Phone: 309.365.8738
Cell: 309.275.3973
(Durocs, Landrace, Yorks)

SCOTT & BRYAN BENNETT
13507 N. Rupp Rd.
Martinsville 62442
Phone: 217.382.4772
(Durocs, Hamps, Yorks)

**SILVER CREEK FARMS/
LEADING EDGE SHOWPIGS**
Scott Toenyas, Adam Kimmle &
Brian Diesen
13372 Lee Rd.
Trenton 62293
Phone: 618.779.6989
(Hamps, Yorks)

STOHLQUIST SHOWPIGS
Ryan & Victoria Stohlquist
15825 Beaverton Rd.
Poplar Grove 61065
Phone: 815.569.1035
Cell: 815.509.0846
(Durocs, Yorks)

SWENSON GENETICS
Seth Swenson
13620 Lisbon Rd.
Newark 60541
Phone: 815.736.6097
Cell: 815.405.6279
(Durocs, Hamps, Yorks)

THOMAS P. BIERMAN
17240 N. 300th St.
Wheeler 62479
Phone: 217.683.2395
(Hamps, Yorks)

TKF SHOWPIGS
Tom Kurtenbach Family
10708 N. 3200 E. Rd.
Chatsworth, IL 60921
Tom: 815.674.2406
Andy: 217.257.0685
Tom e-mail:
tkffarms9@hughes.net
Andy e-mail:
akurtenbach@hughes.net
(Durocs, Hamps, Polands)

TODD & KEVIN BURRUS
6930 Clark Rd.
Arenzville 62611
Phone: 217.997.5511 (day) or
217.997.5920
(Durocs, Yorks)

WEBB FARM
7247 Coon Trail Rd.
Capron 61012
Phone: 815.737.8606
(Durocs, Berks)

WHEWELL'S PROFIT PRODUCERS
Russell Whewell
110 E. Main-Ferris
Carthage 62321
Farm: 217.746.8201
Home: 217.357.3813
(Durocs, Hamps, Landrace, Yorks)

WITZIG FARMS
Roger & Shannon Witzig
28501 N. 2025 E. Rd.
Gridley 61744
Home: 309.747.2225
Farm: 309.747.2423
(Yorks)

ZEHR FARMS
31842 Dutch Lane
Washington 61571
Phone: 309.444.4195
Curt cell: 309.251.7447
(Durocs)

INDIANA

COUNTRY MARKET FARMS
Stan Rush & Eric Foland Family
703 S. 600 E.
Greentown 46936
Phone: 765.461.9469
E-mail: ebfoland@yahoo.com
(Durocs, Hamps, Yorks)

DRAKE PUREBRED FARMS
2736 N. Brick Church Rd.
Cambridge City 47327
Phone: 765.478.4802
(Durocs, Hamps, Landrace, Yorks)

FARRER STOCK FARM
Tom Farrer
6891 W. Co. Rd. 325 N.
Royal Center 46978
Tom: 574.643.9965
Cell: 574.727.0680
(Durocs, Hamps, Landrace, Yorks)

GEORGE & MIKE WATSON
1886 W. Greencastle Rd.
Mooresville 46158
Farm: 317.539.4968
Mike: 317.996.4055
(Hamps, Yorks)

HARVEY HAMPSHIRES
Don L. Harvey & Sons
15124 Dare Rd.
Brookville 47012
Darrell: 765.732.3504
Dale: 765.732.3470
Don: 765.732.3188
(Hamps)

JAMES S. MCKEE
2162 E. Green Bay Rd.
Attica 47918-8034
Phone: 765.762.6362
(Yorks)

JJ GENETICS
Guy Jackson & Mike Johnson
767 E. 1100 S.
Warren 46792
Guy: 260.375.2420
Mike: 260.375.3708
Fax: 260.375.2420 *51
(Durocs, Hamps)

KENT BRATTAIN & FAMILY

263 Co. Rd. 900 W.
Greencastle 46135
Phone: 765.653.1254
Cell: 765.720.3305
(Durocs, Hamps)

KILMER SWINE FARMS

Dave Kilmer
1622 N. 900 E.
Monticello 47960
Phone: 574.943.3239
Fax: 574.943.3321
(Durocs, Hamps, Yorks)

ROBIN RIDGE FARMS

Mike Fagg
1830 St. Rd. 246 W.
Clay City 47841
Phone: 812.939.2534 or
812.249.2851
Fax: 812.939.2534 *51
(Durocs, Hamps, Yorks)

TEMPEL GENETICS

Bill Tempel
14693 N. U.S. 231
Gentryville 47537
Phone: 812.937.2620
Fax: 812.937.2621
(Landrace, Yorks)

TOP-LINE GENETICS

Tom & Jan Disque
8374 N. 100 E.
Seymour 47274
Farm: 812.497.2830
Cell: 812.521.2058
(Durocs, Hamps, Yorks)

WHITESHIRE/HAMROC

Mike Lemmon
1818 E. 600 N.
Albion 46701
Phone: 800.825.2929 or
260.636.7304
Fax: 260.636.3703
(Durocs, Hamps, Landrace, Yorks)

YOUNG & GUARD

Del Guard
Home: 765.583.4657
Tracie Knotts: 765.427.3048
E-mail: del.guard@ffni.com
(Hamps, Yorks, crosses)

IOWA

BOMBEI & SONS SHOWPIGS

Matt Bombei
18824 Zephyr Ave.
Delta 52550
Phone: 641.660.5741
E-mail: showpigs@mahaska.org
(Chesters, Yorks, Crossbreds)

BRINK PREDICTABLE GENETICS

Jerry D. Brink
23098 Gunder Rd.
Elkader 52043
Phone: 563.245.2048 or
563.245.1639
(Durocs, Hamps, Yorks)

BRINNING FARMS

M. Shane Brinning
2264 Ginkgo Ave.
Keota 52248
Phone: 319.698.7000
Fax: 319.461.0696
(Hamps, Yorks)

CAIN HAMPSHIRE

Earl Cain & Family
19760 490th St.
Chariton 50049
Earl: 641.774.5397
Dusty: 641.203.2257
Lee: 641.774.4447
Fax: 641.774.5447
(Durocs, Hamps, Yorks)

CRIMSON & GOLD FARM

Lana Heins-Johnson &
Mark Johnson
15403 410th St.
Leland 50453
Phone: 641.567.3939
Fax: 641.567.3949
(Durocs, Hamps)

DANIEL R. BURZLAFF

2331 185th St.
Delmar 52037
Phone: 563.659.9042
(Hamps, Yorks)

DCM HAMPS & DUROCS

David Martin
1482 County Home Rd.
Marion 52302
Phone: 319.854.7180
Fax: 319.854.7180
(Durocs, Hamps)

HILLCREST FARMS

Keith Wilson
2730 Oak Ave.
Guthrie Center 50115
Phone: 641.524.5384
Fax: 641.524.5360
(Durocs, Hamps, Landrace, Yorks)

HILLTOP FARMS

Richard Swenson
2210 623rd Ave.
Albia 52531
Phone: 641.932.3676
(Hamps)

HUINKER DUROCS LTD.

John & Ruth Huinker
1854 Middle Calmar Rd.
Decorah 52101
Phone: 563.532.9646
(Durocs)

IVERSON HAMPS & YORKS

Ronald & Marcia Iverson
275 E. 140th St. N.
Grinnell 50112
Phone: 641.236.3713
(Hamps, Yorks)

JAYME & SCOTT SIEREN

1235 210th St.
Keota 52248
Phone: 641.636.2153
(Hamps, Landrace, Yorks)

KAY CHRISTIAN DUROCS

1391 334th Rd.
Woodward 50276
Phone: 515.438.2035
(Durocs)

KERNS FARMS

Steve & Becky Kerns
3354 140th St.
Clearfield 50840
Phone: 641.336.2952
Fax: 641.336.2450
(Durocs, Landrace, Yorks)

MAREK LAND & LIVESTOCK

Timothy & Heather Marek
2659 170th St.
Riverside 52327
Phone: 319.648.4000
(Hamps, Yorks)

MARVIN WUEBKER FAMILY

2685 Quinton Ave.
Rockwell City 50579
Phone: 712.297.7644
E-mail: mcwuebker@yahoo.com
(Durocs, Hamps, Yorks)

MOELLER SHOWPIGS CO.

Terry Moeller
1340 Hwy. 218
West Point 52656
Phone: 319.469.6016
(Yorks)

POLICH FARMS

Eric & Stephanie Polich
2120 Owl Ave.
Woodward 50276
Phone: 515.438.2410
(Durocs, Hamps)

RICHARD MATTKE

3275 300th St.
Sumner 50674
Phone: 563.578.5582
(Durocs)

ROHRIG YORKS & SHOWPIGS

Matt Rohrig
2543 305 St.
P.O. Box 155
Orient 50858
Phone: 641.344.8869
(Yorks)

STEWART'S DUROC FARM INC.

Dave & Doug Stewart
1750 212th St.
Waverly 50677
Dave: 319.352.3860
Doug: 319.352.1709
(Durocs, Hamps)

WALDO FARMS OF IOWA

1889 210th St.
Winterset 50273
Phone: 800.869.0425 or
515.462.1240
(Durocs, Landrace, Yorks)

WAYNE J. HUINKER

2091 Middle Ossian Rd.
Decorah 52101
Phone: 563.382.9814
(Hamps, Yorks)

WINMOR FARMS

Don & Jennifer Slagle
9316 Wickham Dr.
Johnston 50131
Phone: 515.418.0634
E-mail: info@winmorfarms.com
(Hamps, Yorks)

KANSAS

MESSNER FARMS

Rt. 1, Box 303
Caney 67333
Richard Anderson: 620.879.5229
Brett Anderson: 620.870.9070
Brian Anderson: 620.515.3348
(Durocs, Hamps, Yorks)

KENTUCKY

GEORGE & ERIC WATSON

1860 Watson Rd.
Hillsboro 41049
Phone: 606.876.4079
(Yorks)

VISTA BROOK FARMS

Dale, Kevin & Tim Ellis
3211 Webster Rd.
Danville 40422
Phone: 859.332-7623
(Durocs, Landrace, Yorks)

MICHIGAN

WOODEN PUREBRED

SWINE FARM
Dennis Wooden
61607 Crooked Creek Rd.
Cassopolis 49031
Phone: 269.445.8066
Fax: 269.445.3001
(Durocs, Hamps, Yorks)

MINNESOTA

COMPART'S BOAR STORE INC.

Dean, Chris & Jim Compart
40750 441st Ave.
Nicollet 56074
Rich: 507.225.3300
Dean: 507.225.3737
Chris: 507.246.5012
Jim: 507.246.5179
Fax: 507.225.3075
(Durocs, Landrace, Yorks)

COMPART'S PRIMARY SPF

Jim Compart
12126 293rd Ave.
Princeton 55371
Farm: 612.389.5295
Jim: 507.246.5179
Fax: 507.246.5339
(Durocs, Landrace, Yorks)

MISSOURI

BROOKE BROTHERS

Michael & Dave Brooke
Rt. 2, Box 64
Braymer 64624-9311
Phone: 660.645.2855
(Durocs, Hamps, Yorks)

FORKNER FARMS/**TRULINE GENETICS**

Everett Forkner
Rt. 1, Box 19
Richards 64778
Phone: 417.484.3306
Toll-free: 877.489.0570
Fax: 417.484.3317
E-mail: efortklg@klmtel.net
(Durocs, Hamps, Landrace, Yorks)

HEIMER HAMPSHIRE
Jesse Heimer
555 Birch Lane
Taylor 63471
Phone: 217.257.0138
E-mail: jheimer13@earthlink.net
(Hamps, Yorks)

JOE ROBERTS
6482 E. Farm Rd. 48
Fair Grove 65648
Phone: 417.759.2824
(Durocs, Hamps)

MCCLOUD FARMS INC.
John, Melanie & Katie McCloud
805 N.W. Hwy. A
Trenton 64683
Phone: 660.485.6468
E-mail: husker@grm.net
(Durocs, Yorks)

ORAM BROTHERS
36968 E. St. Hwy. 146
Gilman City 64642
Phone: 660.876.5302
(Yorks)

ROBISON GENETICS
Randy & Jimmy Robison
5536 S.W. Simental Rd.
Polo 64671
Phone: 660.354.2480
Randy: 660.354.3202
(Durocs, Hamps)

TEAM SLOAN
Scott, Tonya, Troy & Cody
9811 N.W. Dakota Dr.
Cameron 64429
Phone: 816.632.3548
(Durocs, Yorks)

WOLF BROTHERS
Gregg, David & Adam Wolf
4497 Hwy. W.
Chillicothe 64601
Ron: 660.646.9210
Adam: 573.289.3311
Gregg: 417.388.1348
E-mail: ronwolf@grts.org
(Hamps, Yorks, Crossbreds)

ZEB JACKSON
5899 N.E. Crouch Rd.
Turney 64493
Phone: 816.664.2517
(Hamps)

NEBRASKA

GEMAR'S PORK INC.
Gemar Family
31773 Rd. Z
Sutton 68979
Phone: 402.773.4841 or
402.773.5340
(Yorks)

JOY GENETICS
Sarah & Laura Joy
5130 F Rd.
Dunbar 68346
Phone: 402.873.4406
Office/Kirb: 402.873.6648
Fax: 402.873.6682
(Durocs, Hamps, Yorks)

PENNER GENETICS INC.
John Penner
58135 722 Rd.
Plymouth 68424
Phone: 402.228.0753
Fax: 402.228.0306
(Hamps, Yorks)

S&D SHOWPIGS
Scott Dean
74398 342 Ave.
P.O. Box 245
Imperial, NE 69033
Cell: 970.560.6733
E-mail: s_and_dshowpigs@yahoo.com
(Berks, Chesters, Durocs, Spots, Yorks, Crossbreds)

STEVEN FAUSS
P.O. Box 4
Nickerson 68044
Phone: 402.721.8057
(Hamps)

WALDO FARMS INC.
P.O. Box 8
DeWitt 68341
Phone: 800.869.0425
Fax: 402.683.6605
(Durocs, Landrace, Yorks)

NEVADA

RNV SWINE FARM
Russell Pedrett
P.O. Box 1918
Minden 89423
Phone: 775.267.9139
Fax: 775.267.9850
(Durocs, Hamps, Landrace)

NORTH CAROLINA

LOOPER FARMS
Wesley Looper
4695 Petra Mill Rd.
Granite Falls 28630
Phone: 828.396.9102
(Hamps, Landrace, Yorks)

SHARP FARMS
Alan Sharp
5171 Hwy. 581
Sims 27880
Phone: 252.235.3786
Fax: 252.235.4611
(Durocs, Yorks)

OHIO

BOBLENZ GENETICS & GREG EDMONDSTONE
Kevin Boblenz
7620 Agosta-Larve Rd.
New Bloomington 43341
Phone: 740.499.2227
Cell: 740.361.4040
(Durocs, Yorks)

HESSICK'S HAMPS & YORKS
Tim & Sarah Hessick
5475 N. Twp. Rd. 169
Tiffin 44883
Phone: 419.639.3279
(Hamps, Yorks)

ISLA GRANDE FARMS
Rick L. Fogle
1481 Tron Lane
Marion 43302
Phone: 740.382.1580
Farm: 740.382.6448
(Durocs, Hamps, Yorks)

PARRISH FARMS
Howard, Frank & Steve Parrish
5140 County Road J
Edon 43518
Phone & Fax: 419.272.2852
Howard: 419.553.6042
(Durocs, Hamps, Yorks)

OKLAHOMA

HOFSCHULTE FAMILY
P.O. Box 263
Wyandotte 74370
Home: 918.542.6410
Phillip: 918.231.8740
Nick: 918.541.7893
Chris: 918.961.1679
E-mail: phil@hofschultesires.com
(Durocs, Hamps, Yorks, Crossbreds)

OREGON

BECKNER GENETICS
Bob & Sandy Beckner
12643 River Rd.
Gervais 97026
Phone: 503.390.5127
(Yorks)

GOURLEY FAMILY FARMS
Mark & Joyce Gourley
2280 Primrose Loop
Philomath 97370
Phone: 541.929.6264
(Yorks)

PENNSYLVANIA

PEPPLE GENETICS
Jacob Pepple
814 Lafayette Rd.
New Enterprise 16664
Jacob: 814.766.2970
James: 814.766.2318
E-mail: prh@hotmail.com
(Durocs, Yorks)

TENNESSEE

BART JONES
466 Red Hill Rd.
Lafayette 37083
Phone: 615.666.3098
Fax: 270.622.2005
(Durocs, Landrace, Yorks)

DEREK BARTHOLOMEW
2965 Laster Rd.
Huron 38345
Phone: 731.968.5230
Cell: 731.614.4232
(Durocs, Yorks)

TEXAS

5A FARMS
Tim & Ed Armour
780 ACR 2205
Palestine 75801
Phone: 903.538.2175
(Durocs, Hamps)

ALBERT'S YORKSHIRE FARM
John Albert
1442 Haeckerville Rd.
Cibolo 78108
Phone: 210.658.5017
(Hamps, Landrace, Yorks)

CARL W. KENT
Box 62
Pottsboro 75076
Home: 903.786.9423
(Hamps, Yorks)

DONALD HILSCHER
3950 FM 1125
Bowie 76230
Phone: 940.872.5785
E-mail: omatoes@yahoo.com
(Durocs, Spots)

HOLLEY FARMS
Ron Holley & Cody McCleery
3124 Old Brock Rd.
Weatherford 76087
Cody home: 817.594.3625
Cody cell: 817.613.6666
E-mail: doctorduroc@att.net
(Durocs, Hamps, Yorks, Crossbreds)

REAL HOG FARMS
Charles Real
15492 Real Rock Rd.
Marion 78124
Phone: 830.914.2833
Fax: 830.914.3437
(Durocs, Hamps, Yorks)

SAM SPARGER & FAMILY
7900 Hwy. 6
DeLeon 76444
Home: 254.893.2137
Cell: 254.842.4008
(Durocs, Hamps, Yorks)

TAILGATE FARMS
Levelland
Phone: 325.446.4166
www.tailgatefarms-texas.com
(Yorks, Crossbreds)

VISIONARY SWINE GENETICS
320 E. 6th Street
Flatonia 78941
Jake Bass: 361.258.1027
Allen Jackson: 512.207.0038
Morgan Wagner: 830.480.8028
(Durocs, Hamps, Yorks, Crossbreds)

WISCONSIN

BADGER SWINE
Bill Krieg & Mark Justmann
N. 4477 Co. Rd. 1
Lowell 53557
Bill: 920.342.8105
Mark: 920.344.0230
(Durocs, Hamps, Yorks)

BUTTS PUREBREDS
Allan & Jayson Butts
17204 W. Emery Rd.
Evansville 53536
Phone: 608.882.4122
(Durocs, Hamps, Yorks)

NUTTLEMAN FARMS
Erv & Steve Nuttleman
N. 5840 CTH DE
Bangor 54614
Phone: 608.486.4573
Steve: 608.386.8803
(Durocs, Yorks, Polands)

NSR Reference

TOM KNAUER FAMILY
352 N County M
Avalon 53505
Phone: 608.883.2838
(Hamps, Landrace)

TOM RAKE FAMILY
6840 Schumacher
Waunakee 53597
Phone: 608.849.7458
Fax: 608.849.7461
(Durocs, Hamps, Yorks)

TRIPLE L SHOWPIGS
Darren, Laura, Austin &
Natalie Lynd
5027 S. Reid Rd.
Janesville 53546
Phone: 608.676.5816
(Durocs, Hamps, Yorks)

WILSON'S PRAIRIE VIEW FARM
Scott & Ralph Wilson
N. 5627 Co. Hwy. DD
Burlington 53105
Phone: 262.763.6646
Scott: 262.763.6145
Fax: 262.763.6145
(Durocs, Hamps, Landrace, Yorks)

WINMOR FARMS
5027 S. Reid. Rd.
Janesville 53546
Ron Smith:
608.290.7881
Jennifer Slagle:
515.418.0634
E-mail: info@winmorfarms.com
(Hamps, Yorks)

WW-Paul Livestock Scales

Proud sponsor of the **NJSA**



Model 58SX
500-lb. single animal
livestock scale

The new and improved WW-Paul Scale Model 58SX includes the new side slide, bi-fold gate design for faster and easier operation. The Model 58SX is easily retrofitted with an electronic cell, readout indicator and ticket or tape printer, if desired. Heavy-duty construction guarantees an accurate and dependable livestock scale.



All hog and sheep components are constructed from A-513 high-tensile steel tubing. Framework is fabricated from 1½", 14-gauge tubing, and interior vertical rails are built from 1½", 16-gauge tubing. All joints are saddle cut for extra strength. Gate frame is 72" tall and panels are available in 41" or 48" heights. All units have powder coat finish.

Call for name of nearest dealer.



WW-PAUL LIVESTOCK SCALES
Duncan, Okla., 800.657.6062 • Thomas, Okla. 800.999.1214
bo4scales@paulscales.com • P.O. Box 729 • Duncan, OK 73533



Breeder's Choice Customer Appreciation Bred Gilt Sale



Saturday, Dec. 15 2 p.m. EST

Preble County Fairgrounds, Eaton, Ohio

Sale Day Phone: 740.606.0031

Auctioneer: Kevin Wendt, Ohio • NSR Field Rep.: Ralph Doak, 765.427.9910



LEVERAGE

(TBRO9 Rondo 64-4 x JGR6 Lumberjack 127-13)



TRITON

Champion Duroc Boar, 2011 Ohio State Fair
(SDH9 Yak II 218-2 x SDF8 Krazy Kade 67-3)

Selling approximately 45-50 bred gilts!



AVENGER

(WGW9 THE GRIZZ 38-8 x LIB7 TCG FULL TANK 15-2)



JIM DANDY

(JLM1 The One and Only x BERN9 Southern Style)

Check our website for current information! www.breederschoicesires.com



Tony & Dicka Nye

4815 St. Rt. 753 SE • Washington C.H., OH 43160

Home: 740.636.8465 • Toll free: 888.267.9864 • Cell: 740.606.0031 • thenyes@ohiohills.com

December 2012

Designed by
**Seedstock
EDGE**

SEEDSTOCK EDGE • 61



Designed by
Seedstock
EDGE

Bred Gilt *Spectacular*

Dec. 8, 2012 • 1 p.m.

Richwood Ohio Fairgrounds



Vx 173-3

Fame Monster X Paparazzi
Due 1/2 to Hillbilly Cadillac



Vx 204-5

Hi Def X First Blood
Due 12/26 to Crossbones



D 76-7

Different Strokes X Mass Monster
Due 12/28 to Crown Royal



Y 242-4

Milkshake X Right Choice
Due 1/7 to Bone Daddy



Vx 222-4

Fame Monster X Easy Rider
Due 1/14 to Hi Def



Vx 220-3

Paparazzi X Right Choice
Due 1/10 to Hi Def

Delivery: Delivery arrangements can be made to most areas

NSR Rep.: Ralph Doak 765.427.9910

Scott Isler: 740.262.2850 • Bill Isler: 740.815.2910

Nathan Isler: 740.225.5358 • Farm/Office: 740.494.2410



islergenetics.com

IT'S ALL ABOUT

THE Sow

DAM OF TWIN TURBO & TURBO



BUILD YOUR FOUNDATION AROUND GREAT SOWS THAT FLAT OUT WORK. FIND YOUR FOUNDATION SOW ON DEC 9TH. AFTER ALL... IT'S ALL ABOUT THE SOW!

these gilts sell!

TOP LEFT: 7-4 - TURBO X UNBELIEVABLE
DUE TO TWIN TURBO 1-14-2013

TOP RIGHT: 89-6 - TURBO X CANDY CANE
BRED TO MONSTER STICK, DUE 1-14-2013

BOTTOM LEFT: 107-11 - TURBO X LUNCHBOX
BRED TO SWAGGER DUE 1-4-2013

BOTTOM RIGHT: HOMEBODY X UNREAL
BRED TO HOMEBODY DUE 1-11-2013



CHRISMAN, IL

Hi Point Genetics

877-247-3636 BRENT: 217-251-1404 TOM: 217-251-2392 MIKE: 217-232-1618 HIPOINTGENETICS.COM

ONLINE BRED GILT SALE : DECEMBER 9TH : SHOWPIG.COM

CONSISTENCY

Counts



RESERVE CHAMPION DIVISION 4
2012 Georgia National
Shown by Karadee Poultrutt

GRAND CHAMPION PUREBRED BARROW
2012 NJSA Eastern Regional
Congratulations to Edelman Family and Ahrens Club Pigs!



PHOTO - VISIONS

40+ LITTERS EXPECTED FROM DECEMBER - MARCH
crossbreds and purebred yorkshires available

Contact Us for Your Next Winner!



REYNOLDS FARMS

BREEDING STOCK & SHOWPIGS
GARY REYNOLDS 419.308.6377
CHAD REYNOLDS 419.575.2699
9380 EMERSON RD - WAYNE, OH 43466



Online Bred Gilt Sale

ThePigPlanet.com **Dec. 11**



Check our website for pictures of the females we will be offering for sale. *This is the best set of gilts we have ever offered!*

Designed by
Seedstock
EDGE

↑ *This great Recon daughter headlines a deep set of foundation females. (Recon x Best Buy) Bred to Yeti • Due Jan. 27*

INTRODUCING...

Know It All

(Ya Know x Midwest Monkey)

We are very excited about this early July herd boar prospect. Out of the same sow as our very popular 23-3 herd boar we lost much too early. Check our website for pictures of this guy as he matures!



www.iffthyorkshires.com

21748 E. 500 N. Rd., Fairbury, IL 61739

Phone: 815.692.3939

Josh's cell: 815.848.3949 • Jim's cell: 815.848.3940

jifft@route24.net

Feeser Genetics

THANK YOU

Online Bred Gilt/Sow Sale

with DeOrnellas Showpigs

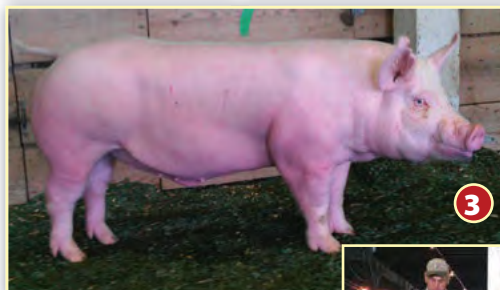
Dec. 11, 2012

SHOWPIG.COM



- 1 **5th-Overall Hampshire Barrow, 2012 WPX (Surreal x Quiet Giant)**
3rd-place littermate boar, 2012 NSS, sold to Jason Shafer, Ohio. Congratulations to Yimme Fontenot, La.
- 2 **2-5 Gilt, 2012 NSS (Preacher x Party Foul)** - Purchased by Michael Ward, Ky.
- 3 **Supreme Barrow Litter 18, 2012 Md. State Fair (SRF0 Smart Move 10-7 x Moonshine 72-4)**
Littermate gilt sold to Keith & Cindy Bryan, Pa.
- 4 **Supreme Champion Gilt, 2012 Andrew Co. Fair, Mo. (TBRO0 WOW 53-4 x SDH9 Buffalo 8-4)**
Littermate to the 2012 NSS Reserve Champ Yorkshire Boar - Congratulations to Ella Jordan!
- 5 **Supreme Boar, 2011 Md. State Fair (FEF Moonshine 36-6)**

Sold to Thomas & Rose Jackson - Full brother went to Keith & Cindy Bryan, Pa.



6 **After selecting this 2012 NSS Reserve Champion Yorkshire Boar & Class 6 winner**, we appreciate Drake Purebred Farm for having enough faith in his female generating power to use him. (TBRO0 WOW 53-4 x SDH9 Buffalo 8-4)

7 **Reserve Supreme Champion Crossbred Barrow, 2012 KILE**
Sired by Deep Pockets - Also exhibited the Champion Open Carcass and Reserve Grand Champion

* Most recently, we exhibited the **North Carolina State Fair Reserve Grand Market Hog**, sired by A Game.

Feeser Genetics

Franklin & Julie
Taneytown, Md.

410.751.1287 (h)
816.344.9566 (c)

*We love calls
and visits!
May God always
bless you!*



We sincerely thank those who have invested in the Feeser program over the last 60 years. We have traveled many miles, seen the seedstock industry change (many times) and have attended too many shows to count. We have also enjoyed many judging team stops and critiques, judging shows and especially officiating judging contests. Most importantly, we made so many friends along the way. We are proud of our daughter, Monica, and her commitment to the livestock industry through her job with the American Angus Association and volunteer programs. She and her husband, Matt, are bringing their kids into the fold through 4-H and junior livestock programs. We are very blessed to have them, and many others along the way who we have claimed as "ours." You know who you are, and we love you all. Downsizing due to health, we will keep just a handful. Those of you who know me know that Hampshires are in my blood and always will be. Feeser Genetics is looking forward to working with John Heins of Sidney, Ohio, (Pfizer Animal Health rep.) in retaining a handful of elite Hampshire genetics.

Most of the bred gilts offered are bred to boars from Cutting Edge Showpig Sires, home of Super Monster, and many other proven sires. Check out www.cesires.com and the Cutting Edge Showpig Sires Facebook page when the sale date gets closer. We plan to have photos and videos.

Breeding Achievements



Reserve Champion Hampshire Boar, 2012 NBS®

CPMW1 Knockout 5-7 x BOLN9 4 Real 2-2

McWhinney Showpigs, Ohio, sees hogs the way we do and took this breeding boar home from the NBS® at \$7,250. Thanks again for your purchase!

Our Hampshires will be a little bigger and greener than most are today – stout with big, immature skeletons. They are loose-structured, yet have plenty of muscle. Ours are heavy-boned with the right kind of bone and extra length of body, and they address two key areas where many Hampshire's are deficient – soundness and productivity. They can have pigs and will grow!



Fieths Beacon 28-2

Thanks to Mike Williams for allowing us to use Beacon.



1st-place Class 1 Hampshire Gilt, 2012 NBS®

Littermate to the Res. Champion Boar



1st-place Class 2 Hampshire Barrow, 2012 NBS®

Littermate to the Res. Champion Boar



MSM1 Media 13-7 – Dam of the winners above!

BOLN9 4 Real 2-2 x GRUS Sun Tea 30-3

Media 13-7 mated to Fieths Beacon 28-2 has produced our litter 13 (14 farrowed with 13 raised) that we will take to Belton, Texas. These pigs offer bigger skeletons with built in production to make building better Hampshires easier. We hope you will stop by our pens and see these changers.

Dotson Farms

EARL DOTSON & FAMILY

9339 NW Oregon Drive, Cameron, MO 64429

Earl: 515.321.3264 • James: 660.216.5690



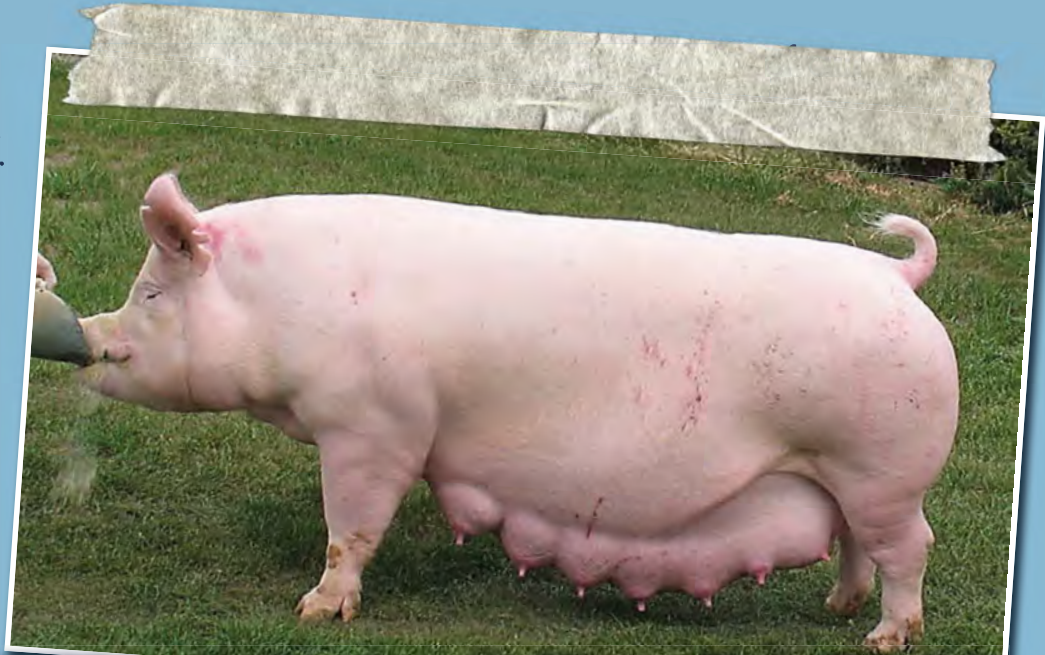
SCHROEDER Farms

608.643.6173

Designed by
**Seedstock
EDGE**

Marella 54-11 is one elite sow who has produced 30+ PPS/Y.

We would like to thank Gunderson Farms of Kirkhoven, Minn., for the purchase of 120 females and four herd boars, including a 54-11 son named HSO1 Frontier 102-12 (shown below) and four littermate gilts.



HS00 Cedarland Marella 54-11

★ Also, thanks to Samuall Sese of the Philippines for the purchase of five gilts and one boar out of Marella 54-11.



HS02 Packer 14-9

We want to acknowledge the purchase of Packer 14-9 by Power Point Genetics, S.D., 605.366.9532. *He's really special!*



HS01 Frontier 102-12

Boars • Gilts • Bred Gilts • Semen

HILMAN B. SCHROEDER

E9804 St. Rd. 60 • Sauk City, WI 53583 • 608.643.6173

BLAST FROM THE



Past

By Katie Maupin

This is part of a series offering brief glimpses into the history of NSR and the breed associations that comprise it. E-mail comments to seedstockedge@nationalswine.com.

Purebred swine breeders like to show their Christmas spirit. In 1977, the December cover of *Duroc News* used some young red hog enthusiasts to spread the cheer. The 1983 December Brood Sow Hall of Fame issue of the *Hampshire Herdsman* showed most producers' winter wonderland, with a brood sow and a Smidley hut. Tidings of joy were even included in the advertisements in the 1983 *Yorkshire Journal*. Mr. and Mrs. Hal B. Clark used "pig Latin" to wish their sale buyers an "Erryma Hristmasca."





Southeast Regional

Jan. 31-Feb. 3, 2013
Perry, Ga.

Held in conjunction with the NSR Winter Type Conference

Thousands of dollars to be awarded in premiums and prizes!

- *Champion Purebred Gilt Overall: One-Year Trailer Lease*
 - *Res. Champion Purebred Gilt Overall: \$500*
 - *Champion Purebred Barrow Overall: \$750*
 - *Res. Champion Purebred Barrow Overall: \$500*
- *Champion Breed and Crossbred Gilts & Barrows: \$250*
- *Res. Champion Breed and Crossbred Gilts & Barrows: \$100*
 - *Champion Bred-and-Owned Gilts in each Breed: \$250*
- *Res. Champion Bred-and-Owned Gilts in each Breed: \$100*
- *Special prizes and awards for Skillathon, Showmanship and Sweepstakes Contests.*

SHOW REQUIREMENTS:

- Barrows must weigh between 215-290 lbs. with a 15 lb. weigh-back.
- Crossbred gilts must weigh 375 lbs. or less with a 15 lb. weigh-back.
- Limit per exhibitor: Four purebred gilts, four purebred barrows, two crossbred gilts and two crossbred barrows.
- Exhibitors must show one purebred gilt for every one crossbred gilt and show one purebred barrow for every one crossbred barrow.
- To compete, exhibitors must be an NJSA member, 21 years and younger as of Aug. 1, 2012.

Online entry available at
www.nationalswine.com



Farrowing Deadline: June 1, 2012 or after

Ownership Deadline: Nov. 16, 2012

Entry Deadline: Dec. 14, 2012

For more information: Contact Torie Schwartz,
NSR Junior Activities Coordinator, at 765.463.3594
ext. 108 or torie@nationalswine.com.



NSR WINTER TYPE CONFERENCE

Saturday, Feb. 2, 2013

Held in conjunction with the
NJSA Southeast Regional
Feb. 1-3, 2013

GEORGIA NATIONAL FAIRGROUNDS & AGRICENTER • PERRY, GA.

FEATURING DUROC, HAMPSHIRE, YORKSHIRE & CROSSBRED BOARS & GILTS

(LANDRACE GILTS FROM JR. SHOW ONLY)

❖ *Entries must be farrowed on or after June 1, 2012* ❖ *Entries due Dec. 14, 2012*

Judges: Duroc: Bret Goff • Hampshire: Aimee Inskip • Yorkshire: Garry Childs • Crossbred: Kevin Wendt

SCHEDULE OF EVENTS

Thursday, Jan. 31

6 p.m. • Earliest entries may arrive

Friday, Feb. 1

Noon • All entries must be on grounds

3 p.m. • All entries must be checked in

Saturday, Feb. 2

1 p.m. • Yorkshire, Duroc, Hampshire and crossbred shows

7 p.m. • Yorkshire, Landrace, Duroc, Hampshire and crossbred sales

(Offering Landrace gilts from the NJSA Southeast Regional only.)

NSR Representatives

Mike Paul 765.427.2692 • Brian Arnold 765.427.1186

Ralph Doak 765.427.9910 • Michael Lackey 765.427.3733 • Brian Anderson 620.515.3348



For more information, call 765.463.3594 or visit

www.nationalswine.com



*Two shows...
One place!*

2013
MARCH 8-10

Modesto Jr. College Ag Pavilion • Modesto, Calif.

Entry deadline: Feb. 6

Western Regional ownership deadline: Jan. 7



Enter online at
www.nationalswine.com



www.calpork.com

Download entry forms online
at www.calpork.com

Exhibitors must enter each show separately!

- Showmanship
- Purebred & Crossbred Barrow Show
- Purebred & Crossbred Gilt Show
- Skillathon
- Barnyard Olympics
- Breeding Gilt & Boar Show
- Judging Clinic
- Jackpot Show (CJLA points show)
- Sweepstakes

Joint supper with dessert and both silent and live auctions.

Designed by
**SEEDSTOCK
EDGE**



For more information visit our websites or contact:
Torie Schwartz: torie@nationalswine.com • 765.463.3594 ext. 108
Lesa Carlton: lesa@calpork.com • 916.447.8950

2013

Southwest type conference

Eight breeds. One show.

Bell County Expo Center • Belton, Texas

Feb. 28 - March 2

The NSR shows will include purebred Duroc, Hampshire, Landrace, Yorkshire and crossbred boar genetics.

Show: Friday, March 1 • Sale: Saturday, March 2



- Entries must be farrowed on or after July 1, 2012
- Entries due Feb. 1, 2013

For more information, call 765.463.3594 or visit www.nationalswine.com.



ZIMMERMAN HOG FARMS

Pick your poison...

Call about semen on Single or Double Shot. We also have all breeds of showpigs and breedingstock available!



THIS SOW CONTINUES TO PRODUCE CHAMPIONS IN HER 12TH PARITY, LIKE THE '10 STC CHAMPION!



Single Shot
BUCKSHOT 2-2 x P1 R SQUARED

Zimmerman Hog Farms

BRIAN 402-520-2725
AUSTIN 402-239-2518

WWW.ZIMMERMANHOGFARMS.COM



Double Shot
BUCKSHOT 2-2 x P1 R SQUARED

CEGAR RIDGE 618.473.2325 CedarRidgeGenetics.com

BRED FEMALE SALE

Starting now & ending Dec. 12, 11 p.m. Phone auction format

All gilts have a starting bid of \$600 Selling more than 100 bred females Crossbreds • Yorks • Hamps • Durocs • Landrace

TO MAKE A BID: Farm Office (Angie): 618.473.2325 • Mike cell: 618.791.7904 • Jim Marquardt (show herd manager): 618.340.6776



\$3,300 TOP-SELLING CHAMPION HAMPSHIRE GILT, SWTC



\$5,000 RESERVE CHAMPION YORKSHIRE GILT, SWTC



GRAND CHAMPION LANDRACE GILT, NATIONAL BARROW SHOW®



TOP-SELLING \$5,400 GRAND CHAMPION DUROC GILT, NSR FALL CLASSIC

Gilts like these will sell!

We will sell these gilts by phone bidding auction format. Bidding will be in \$100 increments up to \$1,000 then \$200 from there. You can call us with your bids anytime or for complete information on the gilts below please visit our website www.cedarridgegenetics.com.

Buyers will be provided with the name and number of the contending bidder upon request. Please visit the farm to view the gilts offered. Call Mike at 618.791.7904 to set up a viewing or if you have questions about delivery.

Duroc Females Bred For Purebred Litters					
EN	PARITY	SIRE	SIRE OF DAM	SERVICE SIRE	114 DUE DATE
7-11	P1	RAW DEAL 227-6	MAXIMUS 4-4	MAXIMUS 1055-1	12/29/2012
102-13	P1	BRAWNY 145-3	IMAX 145-2	MAXIMUS 1055-1	12/29/2012
108-8	P1	RAW DEAL 227-6	SPARTACUS 11-4	MAXIMUS 1055-1	1/10/2013
108-9	P1	RAW DEAL 227-6	SPARTACUS 11-4	MAXIMUS 1055-1	1/13/2013
121-9	P1	BOLD STROKE 29-1	POWER HOUSE 20-4	MAXIMUS 1055-1	1/16/2013
20-9	P1	POWER WAGON 99-2	IMAX 145-2	GLADIATOR 25-4	1/16/2013
14-10	P2	BOULDER 29-1	MAXIMUS 4-4	GLADIATOR 25-4	1/25/2013
19-10	P2	RED GEM 9-1	IMAX 145-2	MAXIMUS 1055-1	1/26/2013
132-7	P1	BOLD STROKE 147-8	EXTENDER 57-2	MAXIMUS 1055-1	1/27/2013
108-7	P1	RAW DEAL 227-6	SPARTACUS 11-4	MAXIMUS 1055-1	1/28/2013

Yorkshire Females Bred For Purebred Litters					
EN	PARITY	SIRE	SIRE OF DAM	SERVICE SIRE	114 DUE DATE
13-9	P1	PIKKUS 324-4	HERCULES 11-2	MARCO 208-6	1/17/2013
123-10	P1	GOLIATH 3-1	ZEUS 40-8	SMOOTH 1017-1	1/17/2013
123-5	P1	GOLIATH 3-1	ZEUS 40-8	EXCELLERATOR 119-3	1/30/2013
5-3	P1	EXCELLERATOR 119-3	ZEUS 40-8	SMOOTH 1017-1	1/31/2013
123-11	P1	GOLIATH 3-1	ZEUS 40-8	SMOOTH 1017-1	2/20/2013
69-8	P2	SAMSON 56-3	AB 458-2	EXCELLERATOR 119-3	2/21/2013
Yorkshire Females Bred For Purebred Litters					
EN	PARITY	SIRE	SIRE OF DAM	SERVICE SIRE	114 DUE DATE
115-8	P1	HEAVY METAL 119-2	CAPTAIN 61-2	CYCLONE 1-1	12/27/2012
115-5	P1	HEAVY METAL 119-2	CAPTAIN 61-2	CYCLONE 1-1	1/1/2013
35-2	P2	HEAVY METAL 19-2	MAGNUM EXPRESS 18-1	CYCLONE 1-1	1/9/2013

EN	PARITY	SIRE	SIRE OF DAM	SERVICE SIRE	114 DUE DATE
44-6	P1	HEAVY METAL 19-2	BIG HOSS 8-1	CYCLONE 1-1	1/9/2013
1-9	P2	TRUE MASTERPIECE 7-3	CAPTAIN 61-2	HEAVY METAL 6-1	1/16/2013
56-3	P2	HEAVY METAL 19-2	ANIMAL HOUSS 81-5	CYCLONE 1-1	1/17/2013
42-7	P2	HEAVY METAL 19-2	ANIMAL HOUSS 81-5	CYCLONE 1-1	1/20/2013
20-8	P2	ENFORCER 466-4	CAPTAIN 61-2	CYCLONE 1-1	1/21/2013
25-8	P1	CYCLONE 1-1	CAPTAIN 61-2	HEAVY METAL 6-1	1/21/2013
42-7	P1	CYCLONE 1-1	CAPTAIN 61-2	HEAVY METAL 6-1	1/21/2013
2-12	P2	TRUE MASTERPIECE 7-3	CAPTAIN 61-2	CYCLONE 1-1	1/31/2013
11-12	P1	WORK OF ART 444-7	BULLETPROOF 345-6	HEAVY METAL 6-1	1/31/2013
25-10	P1	CYCLONE 1-1	CAPTAIN 61-2	HEAVY METAL 6-1	2/1/2013
25-6	P1	CYCLONE 1-1	CAPTAIN 61-2	HEAVY METAL 6-1	2/1/2013
40-5	P1	HEAVY METAL 19-2	PERFECT STORM 258-5	BIG MAC 201-3	2/6/2013
103-11	P2	STEP AHEAD 482-1	BIG HOSS 8-1	CYCLONE 1-1	2/7/2013
115-6	P1	HEAVY METAL 19-2	CAPTAIN 61-2	CYCLONE 1-1	2/7/2013
2-11	P2	TRUE MASTERPIECE 7-3	CAPTAIN 61-2	CYCLONE 1-1	2/14/2013
103-9	P2	STEP AHEAD 482-1	BIG HOSS 8-1	HEAVY METAL 6-1	2/14/2013
104-13	P2	MILLENNIUM 330-1	BIG HOSS 8-1	CYCLONE 1-1	2/14/2013
44-9	P2	HEAVY METAL 19-2	BIG HOSS 8-1	CAPTAIN 421-3	2/14/2013
5-3	P2	BEARCAT 7-2	CAPTAIN 61-2	CYCLONE 1-1	2/20/2013
105-10	P1	STEP AHEAD 482-1	ANIMAL HOUSE 81-5	HEAVY METAL 6-1	2/20/2013
25-9	P1	CYCLONE 1-1	CAPTAIN 61-2	HEAVY METAL 6-1	2/21/2013
52-5	P2	WORK OF ART 444-7	BIG HOSS 8-1	CYCLONE 1-1	2/21/2013
97-5	P2	MILLENNIUM 330-1	CAPTAIN 61-2	CYCLONE 1-1	2/21/2013

Yorkshire Females Bred For Crossbred Litters (Bred Hampshire)

EN	PARITY	SIRE	SIRE OF DAM	SERVICE SIRE	114 DUE DATE
2-14	P2	TRUE MASTERPIECE 7-3	CAPTAIN 61-2	KILLER 889-3	2/20/2013
42-9	P2	HEAVY METAL 19-2	ANIMAL HOUSE 81-5	WALKER 8-1	2/21/2013
63-4	P1	FIRST RATE 298-2	CAPTIN 146-1	KILLER 889-3	2/21/2013

Crossbred Females Bred For Crossbred Litters

EN	PARITY	SIRE	SIRE OF DAM	SERVICE SIRE	114 DUE DATE
21-11	P1	FIRST BLOOD 43-1	BULLETPROOF 345-6	WALKER 8-1	12/27/12
129-4	P1	BRADDOCK 18-1	STAINLESS STEEL 54-11	HEAVY METAL 6-1	1/2/13
17-10	P2	HEAVY METAL 19-2	STAINLESS STEEL 54-11	CYCLONE 1-1	1/2/13
95-4	P1	HEAVY METAL 19-2	STAINLESS STEEL 54-11	KILLER 889-3	1/11/13
21-9	P2	HEAVY METAL 19-2	STAINLESS STEEL 54-11	KILLER 889-3	1/16/13
18-8	P2	OPTIMUS PRIME 5-2	BULLETPROOF 345-6	KILLER 889-3	1/25/13
95-5	P1	HEAVY METAL 19-2	STAINLESS STEEL 54-11	KILLER 889-3	1/27/13
5-4	P2	WORK OF ART 444-7	STAINLESS STEEL 54-11	CYCLONE 1-1	1/28/13
31-4	P1	CHUCK NORRIS 17-2	OPTIMUS PRIME 5-2	SUNAMI 26-3	1/31/13
31-5	P1	CHUCK NORRIS 17-2	OPTIMUS PRIME 5-2	STAINLESS STEEL 54-11	2/1/13
95-8	P2	HEAVY METAL 19-2	STAINLESS STEEL 54-11	WALKER 8-1	2/6/13
11-12	P2	PUR EM DOWN 213-1	STAINLESS STEEL 54-11	HEAVY METAL 6-1	2/14/13
21-8	P2	HEAVY METAL 19-2	STAINLESS STEEL 54-11	KILLER 889-3	2/14/13
31-3	P1	CHUCK NORRIS 17-2	OPTIMUS PRIME 5-2	STAINLESS STEEL 54-11	2/14/13
87-12	P2	CHUCK NORRIS 17-2	OPTIMUS PRIME 5-2	CYCLONE 1-1	2/14/13
87-8	P2	CHUCK NORRIS 17-2	OPTIMUS PRIME 5-2	CYCLONE 1-1	2/14/13
87-9	P2	CHUCK NORRIS 17-2	OPTIMUS PRIME 5-2	HEAVY METAL 6-1	2/14/13
15-8	P2	PUR EM DOWN 213-1	CAPTAIN 61-2	SUNAMI 26-3	2/21/13
87-11	P2	CHUCK NORRIS 17-2	OPTIMUS PRIME 5-2	STAINLESS STEEL 54-11	2/21/13
87-7	P2	CHUCK NORRIS 17-2	OPTIMUS PRIME 5-2	KILLER 889-3	2/21/13
95-7	P2	HEAVY METAL 19-2	STAINLESS STEEL 54-11	SUNAMI 26-3	2/21/13

EN	PARITY	SIRE	SIRE OF DAM	SERVICE SIRE	114 DUE DATE
30-7	P1	SMOOTH STROKE 36-3	POWER WAGON 99-2		2/1/2013
34-5	P1	GLADIATOR 25-4	MAXIMUS 4-4	POWER WAGON 99-2	2/1/2013
17-8	P1	RAW DEAL 227-6	IMAX 145-2	GLADIATOR 25-4	2/2/2013
34-8	P1	GLADIATOR 25-4	MAXIMUS 4-4	BRAWNY 922-4	2/6/2013
99-4	P1	TURBO CHARGER 13-6	MAXIMUS 4-4	GLADIATOR 25-4	2/6/2013
102-8	P1	BRAWNY 145-3	IMAX 145-2	GLADIATOR 25-4	2/7/2013
109-8	P2	RED GEM 9-1	IMAX 145-2	GLADIATOR 25-4	2/14/2013
109-11	P2	RAW DEAL 227-6	IMAX 145-2	GLADIATOR 25-4	2/21/2013
109-9	P2	RAW DEAL 227-6	IMAX 145-2	GLADIATOR 25-4	2/21/2013
19-7	P2	RED GEM 9-1	IMAX 145-2	GLADIATOR 25-4	2/21/2013
45-6	P2	BOULDER 29-1	MAXIMUS 4-4	BRAWNY 922-4	2/21/2013
94-6	P2	SMOOTH STROKE 36-3	IMAX 145-2	GLADIATOR 25-4	2/21/2013

Hampshire Females Bred For Purebred Litters

EN	PARITY	SIRE	SIRE OF DAM	SERVICE SIRE	114 DUE DATE
10-4	P2	CHUCK NORRIS 4-2	DARK SIDE 19-5	KILLER 889-3	12/27/2012
6-7	P2	FROZEN IN TIME 31-2	STAINLESS STEEL 54-11	STAINLESS STEEL 54-11	12/28/2012
17-4	P3	CHUCK NORRIS 4-2	STAINLESS STEEL 54-11	STAINLESS STEEL 54-11	12/28/2012
63-4	P1	OPTIMUS PRIME 5-2	CHUCK NORRIS 4-2	KILLER 889-3	12/28/2012
19-8	P2	OPTIMUS PRIME 5-2	STAINLESS STEEL 54-11	STAINLESS STEEL 54-11	1/11/2013
4-8	P2	HUNG HURY 3-2	STAINLESS STEEL 54-11	SUNAMI 26-3	1/16/2013
112-5	P1	BRADDOCK 18-1	BEARCAT 11-1	STAINLESS STEEL 54-11	1/16/2013
4-6	P2	HUNG HURY 3-2	STAINLESS STEEL 54-11	BRADDOCK 18-1	1/17/2013
27-5	P2	STAINLESS STEEL 54-11	STAINLESS STEEL 54-11	SUNAMI 26-3	1/17/2013
27-6	P2	STAINLESS STEEL 54-11	STAINLESS STEEL 54-11	KILLER 889-3	1/17/2013
88-6	P1	OPTIMUS PRIME 5-2	CHUCK NORRIS 4-2	WALKER 8-1	1/17/2013
3-4	P2	CHUCK NORRIS 4-2	HOLY COW 85-4	STAINLESS STEEL 54-11	1/22/2013
1-9	P1	THE REAL DEAL 25-1	CHUCK NORRIS 4-2	WALKER 8-1	1/31/2013
12-4	P1	CHUCK NORRIS 17-2	BURLY 3-2	STAINLESS STEEL 54-11	1/31/2013
16-11	P1	SUNAMI 26-3	CHUCK NORRIS 4-2	KILLER 889-3	1/31/2013
16-8	P1	SUNAMI 26-3	CHUCK NORRIS 4-2	WALKER 8-1	1/31/2013
6-10	P1	THE REAL DEAL 25-1	CHUCK NORRIS 4-2	KILLER 889-3	2/1/2013
24-5	P1	STAINLESS STEEL 54-11	THE REAL DEAL 19-9	BRADDOCK 18-1	2/1/2013
27-4	P1	WALKER 8-1	STAINLESS STEEL 54-11	SUNAMI 26-3	2/7/2013
27-8	P1	WALKER 8-1	STAINLESS STEEL 54-11	KILLER 889-3	2/7/2013
37-8	P1	SUNAMI 26-3	STAINLESS STEEL 54-11	BRADDOCK 18-1	2/7/2013
24-6	P1	STAINLESS STEEL 54-11	THE REAL DEAL 19-9	BRADDOCK 18-1	2/8/2013
27-7	P2	STAINLESS STEEL 54-11	STAINLESS STEEL 54-11	SUNAMI 26-3	2/8/2013
39-12	P1	BRADDOCK 18-1	CHUCK NORRIS 4-2	STAINLESS STEEL 54-11	2/8/2013
39-14	P1	BRADDOCK 18-1	CHUCK NORRIS 4-2	STAINLESS STEEL 54-11	2/8/2013
39-10	P1	BRADDOCK 18-1	CHUCK NORRIS 4-2	STAINLESS STEEL 54-11	2/14/2013
61-3	P1	BRADDOCK 18-1	STAINLESS STEEL 54-11	KILLER 889-3	2/17/2013
52-14	P1	SUNAMI 26-3	CHUCK NORRIS 4-2	STAINLESS STEEL 54-11	2/21/2013
58-8	P2	OPTIMUS PRIME 5-2	STAINLESS STEEL 54-11	WALKER 8-1	2/21/2013

Hampshire Females Bred For Crossbred Litters (Bred Yorkshire)

EN	PARITY	SIRE	SIRE OF DAM	SERVICE SIRE	114 DUE DATE
58-6	P2	OPTIMUS PRIME 5-2	STAINLESS STEEL 54-11	HEAVY METAL 6-1	2/14/2013
58-5	P2	OPTIMUS PRIME 5-2	STAINLESS STEEL 54-11	HEAVY METAL 6-1	2/16/2013

Landrace Females Bred For Purebred Litters

EN	PARITY	SIRE	SIRE OF DAM	SERVICE SIRE	114 DUE DATE
114-8	P1	FLASH 16-1	GOLIATH 3-1	SMOOTH 1017-1	1/12/2013
135-14	P1	PIKKUS 443-4	GOLIATH 3-1	SMOOTH 1017-1	1/12/2013
264-6	P1	GOLIATH 3-1	WIKKUS 610-1	EXCELLERATOR 119-3	1/12/2013

Big Winners with LVS!



1.800.972.8766
All Great LVS Sires Half Price or Less!

FAME MONSTER

\$55,000 Champion Crossbred Boar
2010 STC



JUST A PARTIAL LIST:

- 2012 Indiana State Fair: Grand Champion Barrow—**FAME MONSTER**
- Tulsa State Fair: Champion Duroc Barrow—**EXTRAORDINARY**
- CPS STC: Champion Spot Boar—**KOLT 45**
- WPX: Res Spot and High Selling Spot Gilt—**KOLT 45**
- Tulsa State Fair: Champion Duroc Gilt—**CROWN ROYAL**
- OK St Fair: Res Hamp Gilt—**POWER BROKER**
- 2012 NBS: Champions Choice Champion Overall Duroc Boar—**CROWN ROYAL**
- 2012 NBS: Crown Royal Reserve Premier Sire
- KS St Fair: Champ Hamp Mkt Hog—**POWER BROKER**
- NSR STC: Premier Duroc Sire—**CROWN ROYAL**
- San Angelo: Champ Chester Gilt—**MAN UP**
- Tulsa: Res Hamp Gilt—**POWER BROKER**
- NSR STC: Champion Duroc Gilt—**CROWN ROYAL**
- Ft Worth: Champion Chester Barrow—**MAN UP**
- WI St Fair Jr Show: Champ Hamp Gilt—**POWER BROKER**
- Houston: Res Champ Chester Barrow—**MAN UP**
- NSR STC: High Selling Duroc Boar—**CROWN ROYAL**
- Dallas St Fair: Champ Chester Barrow—**MAN UP**
- Keystone (KILE): Champ Overall Barrow—**OUTREACH**
- WI St Fair: Res Hamp Boar—**POWER BROKER**

...AND LOTS MORE!



www.leanvaluesires.com
and on facebook and twitter



To our customers and friends,
we extend our best wishes for
a joyous holiday season and
prosperous new year.

National Swine Registry

MERRY CHRISTMAS



Designed by
SeedsRock
EDGE

Date Book

DECEMBER

- 1 **NSR Internship Application Deadline**
- 3 **Stewart's Duroc Farm and Stein & Stewart Genetics Bred Gilt Sale,**
www.nsr-buyerschoiceauction.com
- 3 Isla Grande Online Bred Gilt Sale,
www.showpig.com
- 3-4 **Penner's Bound For Glory Bred Gilt Sale,**
www.nsr-buyerschoiceauction.com
- 4-5 **A League of Their Own Bred Gilt Sale,**
Sponsored by Indiana Duroc Breeders,
www.nsr-buyerschoiceauction.com
- 5 **Olsen's Online Bred Gilt Sale,**
www.nsr-buyerschoiceauction.com
- 5 Moyer Online Bred Gilt Sale,
www.showpig.com
- 5-6 **Nelson Bros & Spring Creek Genetics**
Online Bred Gilt Sale #3
www.nsr-buyerschoiceauction.com
- 6 Conover Online Bred Gilt Sale,
www.showpig.com
- 6 Peters Hampshires & Showpigs
Online Bred Gilt Sale,
www.showpig.com
- 8 Cain Super Sires Online Bred Gilt Sale,
www.cainfarms.com
- 8 Isler Genetics Bred Gilt Spectacular, 1 p.m.,
Richwood, Ohio

- 9 Real McCoy Genetics Online Bred Gilt Sale,
www.showpig.com
- 9 Hi Point Genetics Online Bred Gilt Sale,
www.showpig.com
- 10 **OBC Genetics (Eddie Robinson) Bred Gilt Sale**
www.nsr-buyerschoiceauction.com
- 11 Ifft Yorkshires Online Bred Gilt Sale,
www.thepigplanet.com
- 11 Feeser Genetics Online Bred Gilt/Sow Sale,
www.showpig.com
- 12 Steve Cobb & Family Online Pig Sale,
www.showpig.com
- 13 Heimer Hampshires Online Bred Female Sale,
www.showpig.com
- 14 **NJSA Southeast Regional Entry Deadline**
- 15 Breeder's Choice
Customer Appreciation Bred Gilt Sale,
2 p.m. EST, Eaton, Ohio
- 15 Illini Winter Classic All-Breed Bred Gilt Show & Sale,
Show 10:30 a.m./Sale 1:30 p.m., Seneca, Ill.
- 15 Breeder's Choice
Customer Appreciation Bred Gilt Sale,
2 p.m., Eaton, Ohio
- 20 Range & Theobald Online Bred Gilt Sale,
www.showpig.com

JANUARY

- 4-5 Pennsylvania Farm Show and
Eight-Breed Bred Gilt Show & Sale,
Harrisburg, Pa.
- 31 **NJSA Southeast Regional, Perry, Ga.**
(through Feb. 3)

FEBRUARY

- 2 **NSR Winter Type Conference,**
Perry, Ga.

MARCH

- 1-2 **NSR Southwest Type Conference,**
Belton, Texas
- 2-3 Nationwide Barrow Battle,
Shawnee, Okla.

Farm & Ranch Connection



*Your Premier Source For
Equipment, Livestock &
Renewable Energy Needs.*

Connecting you to the buyers

The Farm & Ranch Connection offers extensive coverage of the latest developments in agriculture. The Farm & Ranch Connection is a productive communication platform. It's not just a magazine, it also serves as an effective interface bringing together the professionals, industry experts, consultants and our readers. Our vision is to bring our readers the most innovative, the most exciting and the most informative agricultural experience.

The Farm & Ranch Connection is proudly published by Connection Publications out of Fort Dodge Iowa, since 1992.

800-424-0323 • 515-955-1980

www.fandrc.com • fandrc@frontiernet.net

NATIONAL ANIMAL IDENTIFICATION SYSTEM

GET THE NUMBER.

Register your premises through the NAIS.

For more information:
www.nationalswine.com/Premises.html

Spread holiday cheer!

with the gift of Seedstock **EDGE**.



This holiday season, give the gift of **Seedstock EDGE** to your friends and family – it's a present they'll get to open nine times a year. Plus, they'll stay up-to-date with the latest news and information in the purebred swine industry. Who could want more?

You don't want to end up on the naughty list, do you? Order your gift subscription today!

Only \$25 for one year!



Gift subscription

New subscription

Renewal subscription

\$25 One Year (U.S.)

\$60 One Year First Class (U.S.)

\$60 Three Years (U.S.)

\$150 One Year (Foreign & Canada)

Please allow 8-10 weeks for the first issue.

This gift is for:

Name _____

Address _____

City/State/Zip _____

Country _____



Return with payment to:
Seedstock EDGE
2639 Yeager Road
West Lafayette, IN 47906

Bill to:

Farm Name _____ Owner Name _____

Address _____ City/State/Zip _____

Country _____ Phone () _____ E-mail _____

(circle one)



Card No. _____ Exp. Date ____/____

Security code (on back of card) _____

December 2012

765.463.3594

www.nationalswine.com

SEEDSTOCK EDGE • 79

Index to Advertisers

NSR/NJSA

2013 Print Schedule/Advertising Rates	8-9
Buyer's Choice Auction	7
Judging DVD	18
NJSA Western Regional/California Pork Spectacular	72
NJSA Southeast Regional	70
NSR Christmas Greeting	77
NSR Southwest Type Conference	73
NSR Winter Type Conference Schedule.....	71
Premise ID – NAIS	78
Seedstock EDGE Gift Subscription.....	79
Social Media – Keep Connected	80

COMMERCIAL

ADM Alliance Nutrition, ShowTec	19
Baker, Dan, West Lafayette, IN	54
Berger, Mike, Bremen, IN	54
Clayton, Tony, Jefferson City, MO	54
Conover, Al, Baxter, IA	54
Day, Chad, Covington, IN	54
Farm & Ranch Connection	78
Fisher, Col. Jon, Champaign, IL	54
Kent Feeds.....	13
Kreis, Ron, Adamsville, OH	55
Linnebur Auctions, Inc., Flora, IN	55
Mullins, Dave, Danville, IN	55
Naughton, Dan, Atlanta, IL	55
Parrish, Howard, Edon, OH	55
Prairie State Semen, Inc., Champaign, IL	54

Purple Circle, Canyon, TX	55
Showbox, Crockett, TX	54
Showmaster.....	27
Spence, William M., Walkerton, IN	55
TD Wall, Inc., Huntington, IN	33
Wendt, Kevin, Irwin, OH	55
Williams, Mike, Higginsville, MO	55
WW-Paul Livestock Scales, Duncan, OK	60

ARKANSAS

Cobb, Steve & Family, Lake City.....	26
--------------------------------------	----

ILLINOIS

Cedar Ridge Farms, Red Bud	74-75
Hi Point Genetics, Chrisman	63
Ifft Yorkshires, Fairbury	65
Illinois Duroc Breeders.....	47

INDIANA

Indiana Duroc Breeders	48
Peters Hampshires & Showpigs, Columbus	15
Shaffer's Gold Rush, Albany	6

IOWA

Cain Super Sires, Chariton	84
Grimm Quality Yorkshires, Maynard	20
Stewart's Duroc Farm, Waverly	21

MARYLAND

Feeser Genetics, Taneytown	66
----------------------------------	----

MISSOURI

Dotson Farms, Cameron	67
Heimer Hampshires, Taylor.....	31
Stein & Stewart Genetics, Odessa	21

NEBRASKA

A Cut Above, Benedict.....	81
Penner Genetics, Plymouth.....	32
Zimmerman Hog Farms, Beatrice	73

OHIO

Breeder's Choice Boar Stud, Washington C.H.	61
Isler Genetics, Prospect	62
Lean Value Sires, New Carlisle	76
Moyer, Tom & Family, Wauseon	82
Real McCoy Genetics, Bloomingburg.....	45
Reynolds Farms, Wayne	64
Shipley Swine Genetics, Newark	2-3

OKLAHOMA

Triple B Sires, Eufaula	83
-------------------------------	----

PENNSYLVANIA

Pennsylvania Farm Show, Harrisburg	51
--	----

SOUTH DAKOTA

Olsen Family, Irene	11
---------------------------	----

WISCONSIN

Schroeder Farms, Sauk City.....	68
---------------------------------	----

Keep **CONNECTED!**




1. Facebook®
2. Twitter®
3. Blog
4. E-list
5. YouTube®

WWW.ACUTABOVESIRES.COM
1110 ROAD 21 • BENEDICT, NEBRASKA 68316

BOAR STUD OFFICE 402-732-6777
BOAR STUD CELL 402-366-6500
JASON HIRSCHFELD 402-366-5231



Sow POWER



MERCEDES
\$15,000 SUPER MONSTER COBB BRED GILT



MISS AMERICA
RECORD SELLING CROSSBRED GILT



MISS UNIVERSE
CURRENT RECORD SELLING CROSSBRED GILT

+BOAR EXCELLENCE



JESSE'S GIRL
\$10,000 HEIMER BRED HAMPSHIRE SOW



TWIN TURBO

P2C 25-5 X WIDE ANGLE (TURBO'S MOTHER)
OWNED WITH HI POINT GENETICS

Twin Turbo has sired the best set of young boar prospects to date at Hirschfeld Livestock. He will definitely leave a mark at our farm.



MARSHALL MONSTER

ACE IN THE HOLE X SUPER MONSTER

The boar to meet the demands of the industry.

We have some of our very best sows bred to Marshall Monster

ALL EYES

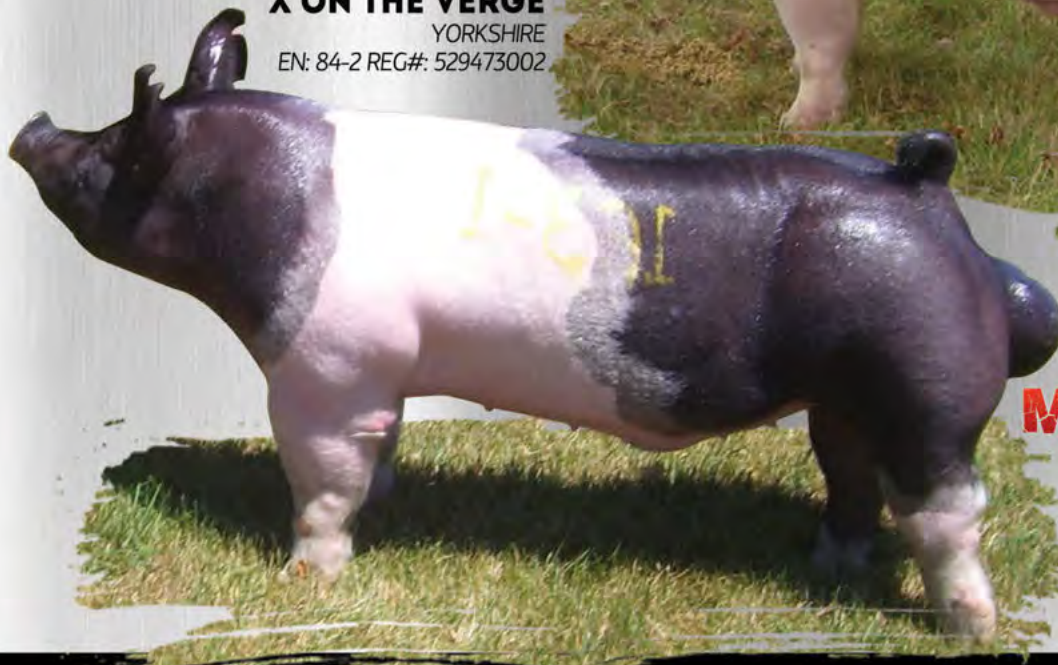
ON THE Prize



POWER DRIVE

**FINAL DRIVE
X ON THE VERGE**

YORKSHIRE
EN: 84-2 REG#: 529473002



MONUMENTAL

**HILLBILLY BONE
X TOXIC 23-5**

STRESS CARRIER
BRED BY MIDWEST GENETICS, IA
OWNED WITH ROHRS SHOWPIGS
& REYNOLDS FARMS, OH

THANK YOU!

THANK YOU TO ALL OF OUR SEMEN CUSTOMERS FOR MAKING THIS FALL A GREAT SUCCESS!

WATCH OUR WEBSITE AS WE CONTINUE TO ADD GREAT BOARS TO OUR LINEUP AND DEVELOP NEW WAYS TO BETTER SERVE YOU!

ALSO SEE US AT

NSR FALL CLASSIC NOV. 14-17 Duncan, Oklahoma
DELIVERY OPTIONS AVAILABLE.

ONLINE SHOWPIG SALES

hosted with drivepigsales.com

DRIVE

NOVEMBER 6

September farrowed gilts & barrows. Great for OYE, Houston, San Angelo, LSU State Show & Georgia

NOVEMBER 11

Featuring gilts bred to our top stud boars due to farrow in November & December

ONLINE BRED GILT SALE

hosted with showpig.com



DECEMBER 5

Featuring Jan-March bred gilts

BOAR STUD 419-335-0890
ANDREW 419-572-0531
BEN 419-583-7507

BOAR STUD: County Road 17, Wauseon, OH 43567



follow us on facebook
TOM MOYER & FAMILY SHOWPIGS/
GENETIC EDGE BOAR STUD

A Sneak Peek into the Sowherd at Triple "B"



Dam of the

**Grand Champion Barrow at
2012 NJSS & WPX Jr. National**

**Bred to Starbuck for an identical
mating to the 2-Time National Grand
Champion Barrow Due Early February**



(Starbuck x I-Got-It)

**One of our many impressive
Starbuck daughters
Bred to Starbuck for a
Line-Bred litter Due Late Jan**



Dam of "Frank the Tank"

Bred to Starbuck Due Mid-Jan



WGWSpud-Daughter

Bred to Monster Jam Due Early February

**A HUGE Thank You to all of
our customers who have made
this year a huge success!!!
2012 will go down as one of
our most successful years in
our 20 years of business!!!**

Check out our website to see Over 30 Barrow Making Boars

**Triple "B" Sires
HC64 Box 5303
Eufaula, OK 74432**

BBB

www.triplebsires.com

1-888-689-3290

★
CAIN SUPER SIRES
ONLINE
BRED GILT SALE
 ★ ★ ★

Saturday,
Dec. 8

Offering 30 of our
 best bred gilts!

*Gilts will farrow late December
 through the first of February.*



310-93 (On Star x World Wide)
 Due: Jan. 9 to ALL STAR



147-90 (Bring It Back x Get It On)
 Due: Jan. 29 to DREAM MAKER



62-10 (Oh My x In Like Flint)
 Due: Jan. 8 to HE'S A TEN

CAINFARMS.COM



888.281.1617



293-87 (On Star x Ghost Buster)
 Due: Jan. 5 to ALL STAR



67-6 (My Turn x World Wide)
 Due: Dec. 30 to 7 UP
 Littermate to the Reserve Champion
 Hampshire Barrow at the 2012 WPX.

CAIN
Super Sires
The nation's largest Hampshire recorder



Designed by
Seedstock
EDGE

19760 490th St. • Chariton, IA 50049 • Earl: 641.203.1391 • Lee: 641.203.4447 • Dusty: 641.203.2257