

20th Anniversary

Seedstock EDGE

m a g a z i n e

The official publication of the National Swine Registry

Real Hog Farming
Synch Your Sows
Mark Your Cards



Female Focus Issue
December 2014

SHIPLEY

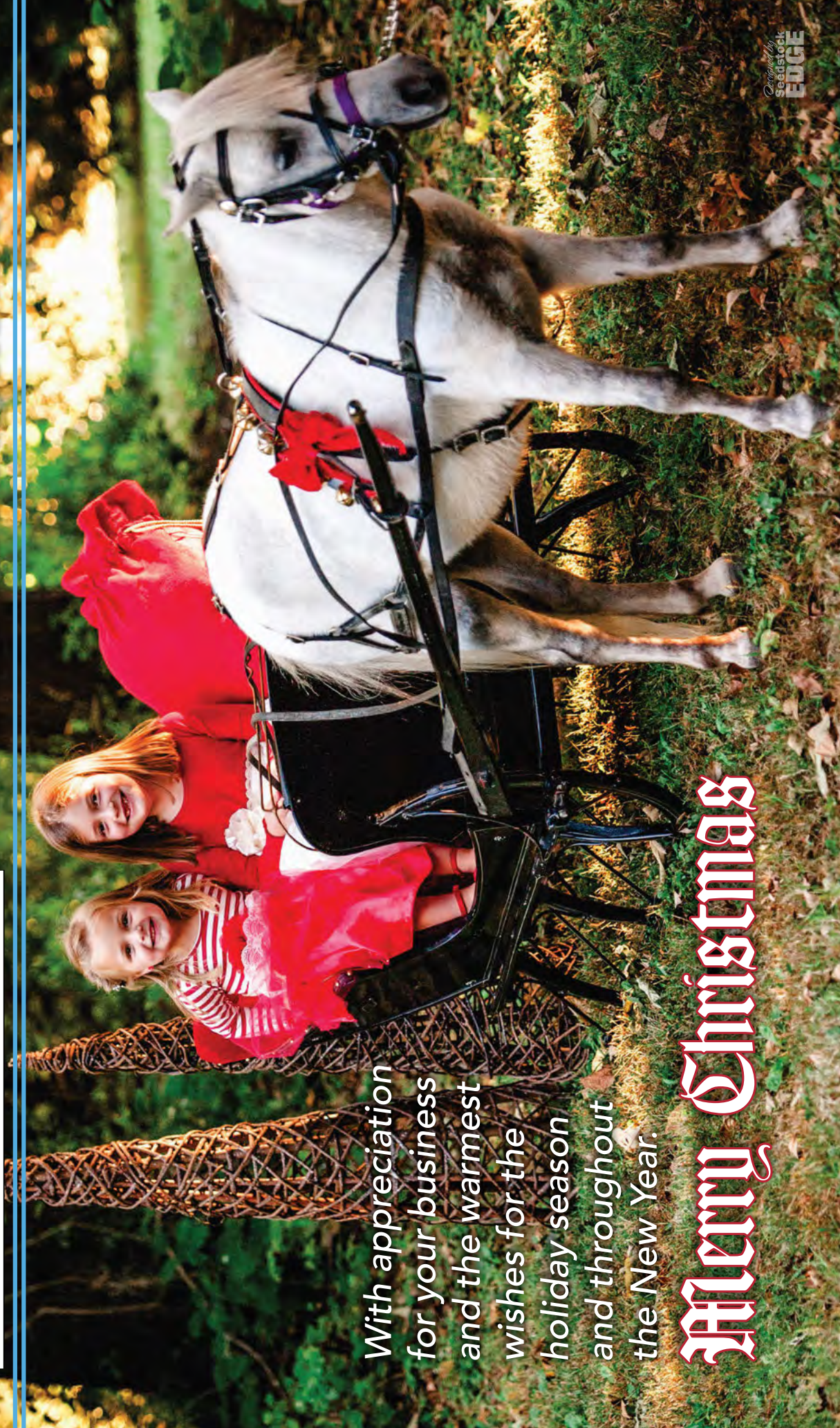
SWINE GENETICS

866.376.8986

8086 Marion Road, Newark, OH 43055 :: Cell: 740.404.5048 • Fax: 740.745.2913

GUARANTEED SETTLE ON MANY BOARDS!

SHIPLEYSWINE.COM



*With appreciation
for your business
and the warmest
wishes for the
holiday season
and throughout
the New Year.*

Merry Christmas

CHANGING THE GAME...

we have what it takes!



**5TH OVERALL GILT
RESERVE CHAMPION CROSS GILT**
2014 INDIANA STATE FAIR
**GRAND CHAMPION GILT
CHAMPION CROSS GILT**
2014 HUNTINGTON CO. FAIR
SHOWN & BRED BY THE ARNOLD FAMILY



GRAND CHAMPION GILT
2014 KICKOFF CLASSIC
SHOWN BY THE CALDWELL FAMILY



GRAND CHAMPION GILT
2014 WABASH CO. FAIR
SHOWN BY CODY MICHEL
BRED BY SHANE BRINNING



**3RD NSR OVERALL GILT
RESERVE CHAMPION DUROC**
2014 WORLD PORK EXPO JR. SHOW
SHOWN BY MADDIE CALDWELL
BRED BY OLSON FARMS



RESERVE GRAND CHAMPION GILT
2014 WABASH CO. FAIR
SHOWN & BRED BY RYAN DRISCOLL



2

Thank you to our 2014 buyers!
REMEMBER TO MARK YOUR CALENDARS

APRIL 11
MICHEL & MALCOM SHOW PIG SALE
ALLEN COUNTY FAIRGROUNDS

GREG, ANDREA, CODY and TROY
7284E 800N - NORTH MANCHESTER, IN 46962
GREG'S CELL 260.578.1066
EMAIL MICELSHOWPIGS@GMAIL.COM
WWW.MICELSHOWPIGS.COM

Mission Statement



"To enhance the value, influence and image of purebred Durocs, Yorkshires, Hampshires and Landrace and to provide an effective medium for National Swine Registry members and swine breeders to promote their product."

Seedstock EDGE (ISSN 1079-7963) is published monthly except bi-monthly in January/February, April/May and October/November by the National Swine Registry (American Yorkshire Club, Hampshire Swine Registry, United Duroc Swine Registry and the American Landrace Association). Subscription rates: (U.S.) \$25/yr., \$60/3 yrs., \$60/yr. 1st class; (Foreign) \$150/yr. Office of Publication is Seedstock EDGE, 2639 Yeager Road, West Lafayette, IN 47906. Phone: 765.463.3594. Printing is by Sutherland Companies, Montezuma, Iowa. Periodicals postage paid at Lafayette, Ind., and at additional mailing offices. All unsolicited articles, letters, photographs and other contributions of any type whatsoever shall become the sole property of Seedstock EDGE, which shall have the sole right to determine whether to publish any such contribution. Seedstock EDGE shall have the right to edit, as it shall in its sole discretion deem appropriate, any such contribution which it publishes. Seedstock EDGE shall have the right to refuse any photos used for promotion and advertising that show evidence of image enhancement and shall have no responsibility or obligation for the return of any such unsolicited contributions.

POSTMASTER: Send address changes to Seedstock EDGE, 2639 Yeager Road, West Lafayette, IN 47906.

Seedstock EDGE Staff

Editorial

Mike Paul

Executive Editor
mike@nationalswine.com

Katie Maupin

Managing Editor
katie@nationalswine.com

Stephen Weintraut II

Creative Director
steve@nationalswine.com

Ann Fry

Ad Coordinator/Assistant Editor
ann@nationalswine.com

Advertising

Brian Arnold

Vice President of Member Outreach & Youth Development
arnold@nationalswine.com

Michael Lackey

Field Representative
765.427.3733

Brian Anderson

Field Representative
620.515.3348

Blaine Evans

Field Representative
765.490.3731



2639 Yeager Road

West Lafayette, IN 47906

765.463.3594 • 765.497.2959 fax

Ads: seedstockedge@nationalswine.com

General: nsr@nationalswine.com

www.nationalswine.com

NSR STAFF

765.463.3594

Chief Executive Officer

Mike Paul • Ext. 107

Vice President of Member Outreach & Youth Development

Brian Arnold • Ext. 106

Vice President of Global Technical Service

Dr. Doug Newcom • Ext. 116

Office Manager & Yorkshire Secretary

Robin Lucas • Ext. 103

Controller

Mindee Pollard • Ext. 108

Software Developer

Adam Dian • Ext. 104

Director of Marketing & Communications

Katie Maupin • Ext. 111

Creative & Web Development Director

Stephen Weintraut II • Ext. 118

Ad Coordinator/Assistant Editor

Ann Fry • Ext. 113

Director of Junior Activities

Kaley Bontrager • Ext. 109

Junior Activities Coordinator

Ellen Olson • Ext. 101

Junior Program Assistant & Landrace/Duroc Secretary

Whitney Hendricks • Ext. 112

Administrative Secretary

Lisa Kennedy • Ext. 105

Hampshire & DNA Secretary

Whitney Webb • Ext. 102

Field Representative

Michael Lackey • 765.427.3733

Field Representative

Brian Anderson • 620.515.3348

Field Representative

Blaine Evans • 765.490.3731

BOARD OF DIRECTORS

NSR EXECUTIVE COMMITTEE

• Chairman

Wayne Huinker, Iowa | 563.380.1372

• Vice Chairman

Scott Lawrence, Ind. | 260.564.0595

• Garry Childs, Ga. | 229.378.0749

• Ron Iverson, Iowa | 641.236.3713

• Bill Range, Ill. | 618.973.1670

• Carl Stein, Mo. | 816.633.4343

• Dr. Mike Tripp, Okla. | 580.513.0723

• Jay Winter, Texas | 806.892.3089

• Dusty Cain, Iowa | 641.203.2257

• Cody McCleery, Texas | 817.613.6666

DUROC

• President

John Huinker, Iowa
Term Expires 2014

• Vice President

*Ron Nelson, S.D.
Term Expires 2016

• Brett Beyers, Ill.
Term Expires 2016

• *Cody McCleery, Texas
Term Expires 2015

• *Bill Range, Ill.
Term Expires 2016

• Joe Roberts, Mo.
Term Expires 2015

• Steve Rodibaugh, Ind.
Term Expires 2014

HAMPSHIRE

• President

*Dave Kilmer, Ind.
Term Expires 2014

• Vice President
*Jesse Heimer, Mo.
Term Expires 2016

• Mark Boe, Ill.
Term Expires 2014

• Dusty Cain, Iowa
Term Expires 2015

• Brian Hines, Mich.
Term Expires 2014

• Jim McCoy, Ohio
Term Expires 2016

• *Jay Winter, Texas
Term Expires 2016

LANDRACE

• President

Scott Lawrence, Ind.
Term Expires 2015

• Vice President

Randy Bowman, Ill.
Term Expires 2014

• *Mike Grohmann, Ill.
Term Expires 2016

• *Lance Westcamp, Ohio
Term Expires 2016

• Chris Compart, Minn.
Term Expires 2014

• *Rachelle Bailey, Calif.
Term Expires 2015

• Lynsee Shaffer-Pullen, Ind.
Term Expires 2016

YORKSHIRE

• President

Garry Childs, Ga.
Term Expires 2014

• Vice President

Dr. Mike Tripp, Okla.
Term Expires 2015

• Dan Burzlaff, Iowa
Term Expires 2015

• Brady Crone, Ind.
Term Expires 2014

• *Tracy Lorenzen, Ill.
Term Expires 2016

• *Neil Planalp, Ind.
Term Expires 2014

• Matt Rohrig, Iowa
Term Expires 2016

*denotes second term

Ad Dropout Policy

To maintain the advertising integrity of Seedstock EDGE, the late ad drop policy developed by the NSR Executive Committee will be upheld by the NSR Department of Marketing & Communications. If an advertiser reserves advertising space in Seedstock EDGE, he or she has until three days after the ad deadline to recall the advertising space. If an ad is pulled after that time, the late ad drop policy will apply. On the first occurrence, the advertiser will receive a written explanation of the policy. On any following occurrences, the advertiser will be charged half the cost of the reserved ad space.

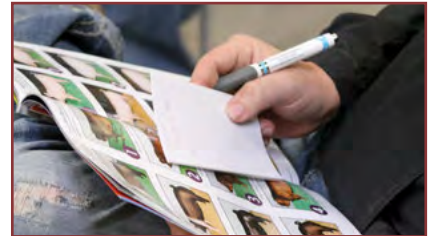
Features



50 Years in the Making 20
by Katie Maupin



Synch Up..... 24
by Ann Fry



Picture Judging Contest 29

Editorial

- Open Mike10**
by Mike Paul
- Youth View.....12**
by Ellen Olson
- Write On14**
by Katie Maupin
- FYI.....16**

Columns

- 20 Years On the EDGE.....15**
- Show Mom Monthly.....37**
by Katie Maupin
- Raised in a Barn38**
- When We Grew Up91**
by Ann Fry

Reference

- Seedstock EDGE**
- Subscription Form.....47**
- Seedstock Source.....58**
- Datebook90**
- Index to Advertisers92**

Shows & Sales

- NJSA Eastern Regional40**
- Ark-Sar-Ben44**
- Cow Palace Grand National44**
- Keystone International Livestock Exposition45**
- State Fair of Texas46**

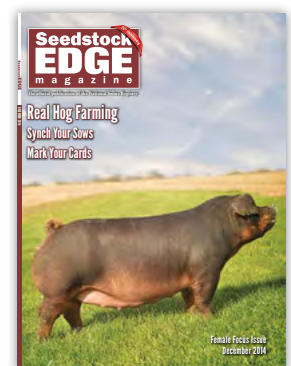
Schedules

- NSR Fall Classic.....50**
- Arizona National50**
- NSR Winter Type Conference/NJSA Southeast Regional51**
- NSR Southwest Type Conference.....52**

On the Cover

This Incredible 24-9 x Jacare 56-1 gilt will farrow her litter by Breakin' Out in early December at Weisinger Farms. A firm foundation of good females has built the purebred swine industry.

Photograph by: Sarah Weisinger





SHAFFER'S GOLDRUSH

Wishing everyone a

Merry Christmas!

GANGSTER

RES. GRAND CHAMPION DUROC BOAR, 2014 STC
ICONIC x HIGH ROLLER (2012 NBS® Hog College® Gilt)
Bred by Derek Moore | 9.6 LEA | .85 BF at 325 lbs. | 1.83 WDA



Winter Price Savings!

All boars priced \$25 to \$75 a dose! Volume discounts available!

Visit our website to view our powerful line-up.

888.690.2022



SHAFFERGOLDRUSH.COM

TERRY 765.730.1031 | AIMEE 765.730.1666 | LYNSEE 765.717.9924

BRADLEY 765.414.7485 | DELBERT 765.729.5227 | shaffer@shaffergoldrush.com

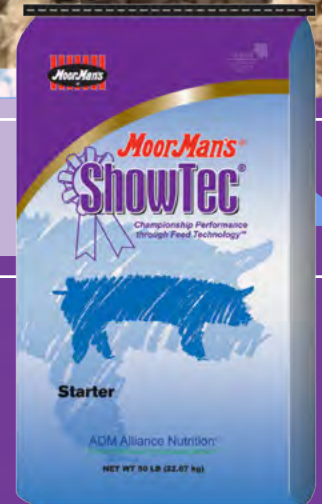
**Loaded and
Ready to Burst**



**MoorMan's® ShowTec®
Burst Starter CTC/DEN 24020AYW**

It's loaded with proven elements and nutritional boosters essential for young show pigs being fed for early exhibition shows or show pig sales. This exciting show pig mini-pelleted, complete feed incorporates ADM proprietary and patent-pending nutritional technology like Energy Burst™, CitriStim®, PremiDex™ and Easyzyme™ to enable young show pigs to burst with exceptional muscle expression and shine needed to successfully compete in the show ring.

Formulation know-how is essential in combining advanced nutritional components with manufacturing expertise to produce an exceptional show pig feed....and that's just what you get with MoorMan's ShowTec Burst Starter CTC/DEN.



**See you in the
Champion drive.**



Show Feed Specialists

Al Schminke - 217-257-3513

Tadd Knight - 217-653-0528

James Scifres - 580-450-5611

Krishna Custis - 307-760-0327

Kaylee Keppy - 563-370-5012

Josh Elkins - 979-255-8309

Kent Lewis - 806-773-8981

www.admani.com/MoorMansShowTec • 866-666-7626 • AN_ShowFeedHelp@adm.com

ADM Alliance Nutrition, Inc. • Quincy, IL

December 2014



SEEDSTOCK EDGE • 7

2014 C H A M P I O N S

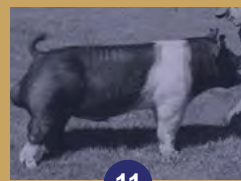
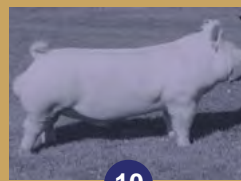
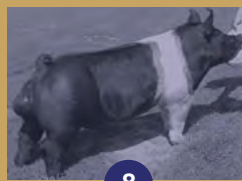
A sincere appreciation to our showpig family and friends for their confidence in our breeding program this past year. Wishing all of you a very Merry Christmas and a prosperous New Year!



Champion Hampshire Gilt - Reserve Overall Gilt
NJSA Eastern Regional
Shown by Maddie Fugate - Sired by Peaches



Champion Hampshire Barrow
Reserve Overall Barrow - NJSA Eastern Regional
Shown by Maddie Fugate - Sired by F.I.T.



1. Champion Hampshire Barrow - National Western Stock Show
2. Grand Champion Barrow - Lincoln County Fair, Colorado
3. Class Winning Barrow - Wisconsin State Fair
4. 4th Overall Duroc Gilt - NJSA Summer Spectacular
5. Reserve Champion Bred & Owned Hampshire
NJSA Summer Spectacular
6. Champion Hampshire Barrow & 3rd Overall
Wisconsin State Fair
7. Champion Cross Gilt - World Pork Expo
8. Champion Hampshire Boar - NSR Summer Type Conference
"Pumpkin" - Sold to Shaffers Gold Rush
9. Champion Cross Barrow - Central Indiana Classic
10. Yorkshire Boar - "Mr. Wonderful" - Sold to Showtime Sires
11. Cross Boar - "Yellow Jacket" - Sold to Showtime Sires
12. Cross Boar - "Blacky Chan" - Sold to Real McCoy Genetics



JR, Denise, Trey and Cade Fecke

12250 W 2000N Rd. • Bonfield, IL 60913

Office: (815) 426-2051

JR cell: (815) 693-4962

Trey cell: (815) 693-4964

Herdsmen: Clay Hamil

FECKELIVESTOCK.COM

WINTER PRICING!

ALL BOARS PRICED AT **\$35**

PER DOSE

6 OR MORE **\$25** PER DOSE



SOMETHIN' BAD
BONE THUG X PRICELESS

Stress: Negative



MILE MARKER

EXTRA MILE X WARFARE

Stress: Negative

WISHING YOU & YOURS A
Merry Christmas

SOUTHERN
GOLD

Designed by
Seedstock
EDGE

BILL ROSENBAUM

7395 W. Lost River Rd. • Salem, IN 47167

Cell: 812.620.2296 • Office: 812.755.4306

southernoldsires@gmail.com

southernoldsires.com



Open Mike

Change

I will be the first to admit I am a traditionalist, including the music I listen to, the movies I watch and even the style of clothes I purchase. However, when I look back, I realize I have been involved in many changes in the swine industry, from Dad and Grandpa running boars with sows in groups, farrowing these sows in four-pen hog houses and finishing them with walk-in hog feeders out on pasture to letting sows in and out of crates twice a day and finishing these animals on Cargill floors. Today, early weaning, wean-to-finish buildings, gestation buildings and AI are all parts of systems that generate the best and most consistent set of market animals, which provide a great source of protein for the world. As I look back, I hate to admit some of those good ol' days maybe weren't as good as I remember, and the changes our industry incorporated provided a new set of opportunities.

Another major change in the purebred swine industry was the formation of the National Swine Registry (NSR). I remember there were many naysayers when the United Duroc Swine Registry (UDSR), the Hampshire Swine Registry (HSR) and the American Yorkshire Club (AYC) partnered to create this organization. A few years later, the American Landrace Association (ALA) became the fourth partner in the NSR.

Why did this change happen? As change was taking place in the production of purebred genetics, the leaders of these associations realized their programs and services were not meeting the needs of their members. The other day, I read the following statement from George Bernard Shaw, "Progress is impossible without change, and those who cannot change their minds cannot change anything."

So, how was change implemented? First, we all had to admit swine production as we knew it in the '70s and '80s was a thing of the past. Commercial producers no longer needed the large numbers of boars to get their females bred. They needed a select group of boars that could be utilized with AI. Health challenges created the need for many of these operations to develop their own maternal lines. On the other side, leaders realized the need for a youth program in the swine industry. The diverse needs of purebred producers were finally ac-

cepted, and the goal of the NSR became to serve these needs.

A commercial services division was put into place to assist members involved in providing genetics to the commercial swine industry worldwide. This division has grown into America's Best Genetics, which is now recognized as a supplier of elite genetics throughout the world.

A youth development division was created to assist

"You will never be 100 percent ready to change. Don't wait for the perfect time. It will never come. Start today."

members who market purebred pigs to serve as youth projects. In addition to merchandising showpigs, the youth division created a new group of young people who were growing up and growing interested in the swine industry. Activities (shows, affiliated shows and leadership conferences) have grown to provide opportunities for more than 12,000 young people around the country.

The NSR Executive Committee continues to seek out programs and services to assist the membership. One such facet which will be focused on in the near future, is the NSR Foundation. This program was set up several years ago, but has not been fully developed. It will assist in raising funds to provide members of all ages opportunities such as further education and research. Be watching for more information on this program.

Another service that will begin in 2015 is the Crosscheck program. The NSR Executive Committee has approved the development of a program to track the lineage of crossbred animals and provide a certificate to breeders that take part in this program. As you can see, there are new opportunities to become more involved in the purebred swine industry.

You will never be 100 percent ready to change. Don't wait for the perfect time. It will never come. Start today.

To contact Mike, use your smartphone to scan the code to the right or email him at mike@nationalswine.com



olsen family

GENETICALLY SUPERIOR SEEDSTOCK

OFFICE: 605.327.3285 • CHUCK: 605.661.7864 • BEN: 605.660.2828

Online BRED GILT SALE

DEC. 3, 2014

Offering 40 head of Yorkshires, Durocs, Hampshires and crossbreds due in January and February. Cooperative delivery available.



280-7 (Power On x Razzle)
Due 1/8/15 to Bruno 273-8



282-3 (Power On x Net Worth)
Due 1/15/15 to Bruno 273-8



280-4 (Power On x Razzle)
Due 1/30/15 to Bruno 273-8



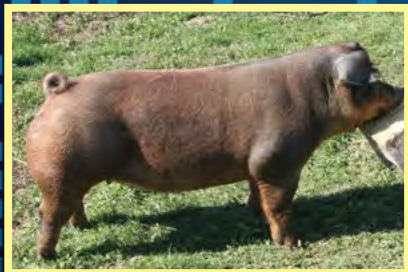
281-2 (Power On x Razzle)
Due 1/30/15 to Bruno 273-8



264-1 (Moore Power x Net Worth)
Due 2/1/15 to Power On 282-7



2-5 (Bruno x MO)
Due 2/20/15 to Power On 282-7



299-3 (Big Wheels x Looker)
Due 1/8/15 to Joe Cool



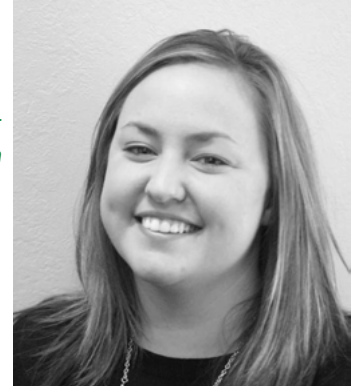
274-4 (Big Wheels x Yak II)
Due 1/13/15 to Joe Cool



6-11 (Big Wheels x JC)
Due 2/4/15 to Joe Cool

29369 451st Ave., Irene, SD 57037 • OLSENYORKS@GMAIL.COM

WWW.OLSENYORKS.COM



Youth View

Finding thankfulness

Fall – a time for beautiful weather, sunsets and pumpkins, but more importantly a time for family and home-cooked meals as the holidays draw near. For me, November is the time of year I voice how thankful I am for what I have. This is no coincidence; it's Thanksgiving, when we are taught to be thankful for the blessings we have. But, it makes me think, shouldn't I be thankful for my many blessings year-round, not just on the days I am able to eat way too much and take a nap?

Here's a short excerpt of the long list of things I am thankful for in my life: my family, my fiancé, my friends, my health, my career in the swine industry and the chance to travel to pig shows across the country.

When I make a list of what I am thankful for, I always come back to being part of the swine industry. Getting the opportunity to feed a passion I created at a young age is something I hold quite dear. Life lessons are

taught in the barn and show ring. We learn how to be humble winners and gracious losers. However, at times, we forget to say "thank you." We should be thankful every time we step in the ring. Instead, there are times we feel more defeated.

Likely, everyone sets a goal to win the champion banner during their show career. We invest a lot of time and money into our projects, and when they don't do as well as we expect or hope, it's easy to lose sight of the things we accomplished. Growing up in the swine show ring, I was as guilty of this as any. We get so caught up in wanting to be in the number one spot, we forget it is still quite an achievement to be the reserve champion, or second or third in class, and those people who help us out, when we are winning, are still behind us even when we are not doing as well. As young people growing up in the livestock industry, we have so much to be thankful for, not just when we are in the winner's circle or on Thanksgiving, but every day.

There are times it is hard to be appreciative of the situation – times when livestock get sick or a hog wears down in the final minutes of showmanship. These are the mo-

ments when being thankful can slip through our fingers. If we look at it a different way, however, there might be a change of heart and thankfulness. When our livestock get sick, we should be thankful for modern animal medicine and veterinarians who can help us restore a clean bill of health. When our hogs wear down at a critical time in showmanship, there's a chance to be thankful we got that far because a lot of competitive showman have already been sent back to the barn. Some would call it seeing the glass "half full," rather than "half empty." But I would say, there's just a chance to be thankful for how far you've come in an industry dedicated to rewarding individuals for hard work and persistence. These traits are passed down from generation to generation; it is up to Generation Y to continue to pass

"We should be thankful every time we step in the ring."

down the thankful gene to the next generation of showmen.

We were given parents, grandparents, brothers and sisters, aunts and uncles, advisors and mentors that allow us to show our animals. They help us pay for our livestock and their feed. They help us with late night chores and early morning exercise routines, and they are there to support us and be our cheerleaders no matter the outcome of the show. Too many of us take these people and this opportunity for granted, so I challenge you, this holiday season, to not only tell your family how much they mean to you, but also every person that helps you with your livestock "thank you" for everything they do.

Now, as I sit in my office and prepare for my first calendar year of pig shows, youth events and leadership conferences, I have to say "thank you" to all of my family and friends and the exhibitors, parents, volunteers, sponsors and friends of the swine industry that help make my job and all the events possible.



To contact Ellen, use your smartphone to scan the code to the right or email her at ellen@nationalswine.com.



CONTROL

YOUR SUCCESS

WITH THESE WINTER SAVINGS!

ALL BOARS HALF PRICE OR LESS NOW THROUGH MARCH 30, 2015



In Control

OUT OF CONTROL X DRIVE BY

Bred by Hoge, IL - \$270,000 World Record Selling Boar

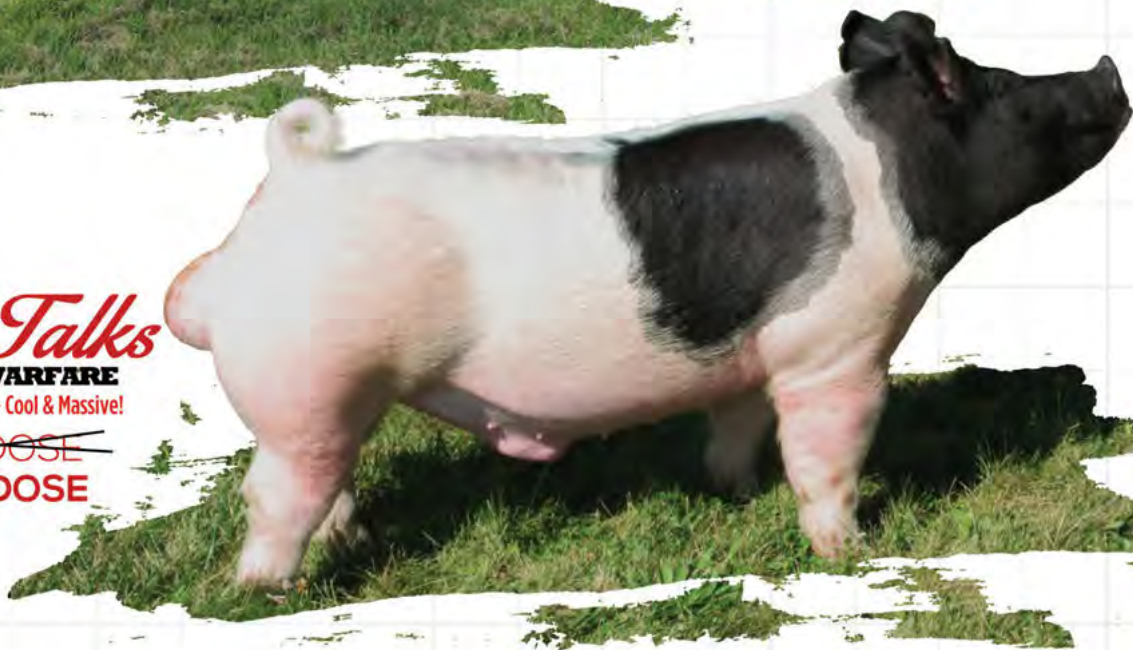
~~\$1500/DOSE~~
\$500/DOSE

Money Talks

FORTUNE X WARFARE

Bred by Team Sloan, MO - Cool & Massive!

~~\$400/DOSE~~
\$200/DOSE



DECEMBER 9 BRED GILT SALE

DUE MID-DECEMBER - FEBRUARY • WWW.THEPIGPLANET.COM

BOAR STUD 419-335-0890 • ANDREW 419-572-0531
BEN 419-583-7507 • MIKE SCHROCK 419-572-6862
SHANE POULSON 419-572-6124
BOAR STUD: 2235 County Road 17 Wauseon, OH 43567



 follow us on facebook TOM MOYER & FAMILY SHOWPIGS/GENETIC EDGE BOAR STUD



Write On

Giving

'Tis the season – we're running around filled with the unexplainable joy the holidays bring. Everyone counts their blessings, smiles a little brighter, marks off extra space on their schedules to fill with family and festivities and reaches a little deeper into their pockets for the bell ringers outside their local grocers. The holidays inspire everyone to give a little more, whether it's finding the perfect present for a loved one or delivering canned goods to a food bank.

I always think how nice it would be if this sense of peace, joy, thanksgiving and selfless-giving lasted year-round, but then, I realized for many in our industry it does. It occurred to me when I was asked how my collegiate judging coach had impacted my life and career. I went on and on about how much time David "Chip" Kemp had spent

to ensure my future success. I wrote about how he'd taken the time to learn my name when I was just a nine-year-old bucket calf showman at a county fair, how he'd always make time to talk to me if he saw me at a show or event, how he'd always offer extra advice after seeing my 4-H judging results, how he was a constant mentor throughout my college career and how he went out of his way to help me find a career I loved. Kemp gave me much more than the perfect present, some spare change or a good meal; he gave me his time.

It wasn't just Kemp either. From the time I joined 4-H, countless adults spent time teaching me about the industry, but more importantly life. I learned how to win, how to lose, what hard work was and why it was important to be responsible. I'd hate to try and put a number on the countless hours that 4-H club leaders, judging coaches, Extension specialists, ag advisors, friends and family invested in me. They gave up numerous weekends, some opportunities to sleep in and, in my parents' case, a fair chunk of their

income to make sure I had the opportunity to participate in the livestock industry. I just hope one day they will realize the true impact of what they've given me. I know without a doubt I wouldn't be writing to you today without those youth livestock programs and the people who stand behind them.

In this magazine, you'll read about how Chuck Real and his family have been in the hog business for 50 years. For

"So, while you're in a giving mood, consider giving something that won't cost a dime – your time. I guarantee you'll never even know the full value of that gift, or how much it will mean to the future of a young person."

half a century they've made hogs better in Marion, Texas. But, when I spoke to Real and asked him about his proudest moment, he didn't mention the many accomplishments his genetics garnered over the years. He told me about the success of the 4-H livestock judging teams he's coached for 30 years. For three decades, Real took time out of his schedule to teach some young people about the industry, and his wife, Debbie, even took time out of her schedule to make sure she had a batch of cookies baked to give the kids after practice.

So, while you're in a giving mood, consider giving something that won't cost a dime – your time. I guarantee you'll never even know the full value of that gift, or how much it will mean to the future of a young person.



To contact Katie, use your smartphone to scan the code to the right or email her at katie@nationalswine.com.





20 YEARS ON THE EDGE

A look back at the past 20 years of Seedstock EDGE magazine

2000

The cover of the August 2000 issue featured two record-selling boars from the Summer Type Conference. Brad Bates brought his Duroc boar entry from Ohio. He sold to Lean Value Sires for \$57,000 and returned to Ohio as "Red Crush." Indiana natives Jerry and Dave Walter sold their "Tuned In" Yorkshire boar to Top Cut Show Pig Sires from Ohio for \$56,000.

2000



2005

2005 was the year the December magazine became the Brood Sow Issue. Megan Townsend's feature article, "How, now, about that sow?" shared sixteen breeders' opinions on the importance of foundation females in an operation. Many breeders agreed the sow contributes 60 percent to the success of the next generation.



2005

2009

The January 2009 issue included the NSR Fall Classic results from the previous November. That year, the High-Selling and Reserve Grand Champion Weanling Female Overall sold to Hirschfeld and Sons, Nebraska, for \$16,000. Forty other gilts brought \$1,000 or more. The Top-Selling Weanling Male sold to Cobb Farms, Arkansas, and Hi Point Genetics, Illinois, for \$27,500.

2009



For Your Information

Keeping you connected with the recent news in the purebred swine industry.

Upcoming Seedstock EDGE Advertising Deadlines

Advertising deadlines for upcoming issues of *Seedstock EDGE* are as follows:

- **January/February Issue** –
Ad copy due Dec. 4
- **March Spring Showpig Issue** –
Ad copy due Feb. 3
- **April/May Issue** –
Ad copy due March 26

Industry News

America's Best Genetics Promotes Purebred Genetics Abroad



The National Swine Registry (NSR)'s Vice President of Global Technical Service Dr. Douglas Newcom recently returned from an extended trip to China to promote US purebred swine genetics. Newcom was joined by Dr. Wayne Singleton, retired professor of animal science from Purdue University; Valerie Durtlinger, of Temple Genetics; Dr. Mike Lemmon, from Whiteshire-Hamroc; and Xigang (Jason) Feng, from Beijing-Whiteshire, on a 10-day Scientific and Cultural Exchange Program with the Ministry of Agriculture (MOA) in China.

The group met with National MOA personnel, local and regional animal husbandry groups, producers and faculty from China Agricultural University, Chinese Agricultural Academy of Sciences, Huazhong University, South China Agricultural University and Sun Yat-Sen University. The goal of the program was to exchange scientific and technical knowledge between US and Chinese swine industry personnel, and determine how NSR and its members could further cooperate with breeders in China. Several seminar and cooperative topics were discussed including a national ultrasound training conference to be held in conjunction with the Wuhan Swine Expo next October.

Seedstock EDGE magazine



any closer and you'd be

RINGSIDE

DON'T MISS ONE ISSUE!

Seedstock EDGE is the premier publication of the purebred swine industry.

Subscribe or renew online today!



www.nationalswine.com/seedstockEDGE/subscribe.php



Lois Britt Memorial Pork Industry Scholarship

Introduced in 1990 to celebrate the 25th Anniversary of Live Hog Futures, the CME-sponsored Pork Industry Scholarship Program continues to recognize outstanding youth in the pork community. Four \$2,500 scholarships will be awarded to talented and thoughtful students who may emerge as pork industry leaders someday.

To be eligible you must:

1. Be an undergraduate student in a two-year swine program or four-year college of agriculture;
2. Write a brief letter indicating what role you see yourself playing in the pork industry after graduation;
3. Submit a 750-word essay describing an issue you see confronting the pork industry today or in the future - and offer your solutions;
4. Obtain two letters of reference from current or former professors or industry professionals; Prepare a cover sheet with your:
 - a. name
 - b. complete mailing address, telephone number and e-mail address
 - c. school name
 - d. year in school
 - e. permanent mailing address and telephone number
5. Submit the above items in a single envelope to:
National Pork Producers Council
P.O. Box 10383
Des Moines, Iowa 50306-9960
or e-mail Craig Boelling at boellingc@nppc.org.

ALL ENTRIES MUST BE POSTMARKED BY DEC. 12, 2014.

The National Pork Producers Council (NPPC) will administer the program, read the essays and select the winners. Essays will be judged on the basis of clarity or expression, persuasiveness, originality and relevance of topic. Winners will be announced at the Pork Industry Forum in San Antonio, Texas, March 5-7, 2015. NPPC reserves the right to publish any or parts of the essays submitted.

For additional information, please contact:

Craig Boelling, 515.278.8012 or boellingc@nppc.org.



Upcoming Show Dates & Deadlines

Arizona National

The Arizona National is now an NJSA-sanctioned show. The event will be held in Phoenix, Arizona, on Dec. 27-31. For more information about the "Vacation Show" visit anls.org or turn to page 50 to see a full schedule of events.

Winter Type Conference

The WTC will once again be held at the Georgia National Fairgrounds and Agricenter in Perry, Georgia, in conjunction with the NJSA Southeast Regional. The open show and sale will take place on Jan. 31. Entries are due by Dec. 11. The schedule may be found in this issue of the *Seedstock EDGE* on page 51 or online at nationalswine.com.

Southeast Regional

The Southeast Regional will be held in Perry, Georgia, from Jan. 28-Feb. 1, in conjunction with the Winter Type Conference. All entries must be owned by Dec. 1 and entered online by Dec. 11. A full schedule of events can be found on page 51 and the most up-to-date rules and regulations as well as an entry form can be found on nationalswine.com.

Southwest Type Conference

The Southwest Type Conference is scheduled for Feb. 25-28. It will be held at the Bell County Expo Center in Belton, Texas. All entries must be farrowed on July 1 or after, and they are due by Jan. 23. An entry form can be found in the January/February issue of the *Seedstock EDGE* or you may enter online at nationalswine.com. For a full schedule of events turn to page 52.

Engagements



Olson-Knauth Engagement

John and Ann Olson of Elkhart, Illinois, announce the engagement of their daughter, Ellen Olson, to Kyle Knauth. Knauth is the son of Keith and Marsha Knauth of Milford, Illinois. The couple attended Lake Land Community College and the University of Illinois. They both have a passion for the swine industry. The bride-to-be is the Junior Activities

Coordinator for the National Swine Registry, and the future groom works in sales for Prairie State Semen Supply. They will be wed on Nov. 29, in Lincoln, Illinois.

To submit announcements for FYI, contact
Katie Maupin at katie@nationalswine.com

NSR Internship Opportunities

The National Swine Registry (NSR) will once again be offering three internships, during the summer of 2015, including the Field Staff, Marketing & Communications and National Junior Swine Association (NJSA) internships. These internships are fulltime, and students will be paid a weekly stipend. All internship applications are due Dec. 1, 2014.

Field Staff Internship: The NSR Field Staff Internship provides on-the-road experience traveling with fulltime NSR Field Representatives, and opportunities to both learn from and contribute to field activities. Responsibilities include visiting purebred swine farms and AI boar studs; assisting at NSR-sponsored events including the World Pork Expo in Des Moines, Iowa, and the Summer Type Conference and National Junior Summer Spectacular in Louisville, Kentucky; assisting at state fairs; and other field staff duties as assigned. For more information and to apply email Vice President of Member Outreach and Youth Development Brian Arnold at arnold@nationalswine.com.

Marketing & Communications Internship: This is a tailor-made internship – you help make it what you want it to be! As the NSR Marketing & Communications Intern, you will have the opportunity to work with NSR staff to personally design your internship curriculum and focus on the areas of marketing and communications in which you are most interested, or want to gain experience. Options for a summer work plan include feature writing for *Seedstock EDGE*, advertisement design and page layout, magazine production, online content development, photography, video editing, promotional campaign design and more! You will have the chance to collaborate on projects with the NJSA, report on national shows, and brainstorm and develop new ideas for growing and promoting the NSR. For more information and to apply email NSR Director of Marketing & Communications Katie Maupin at katie@nationalswine.com.

National Junior Swine Association Internship: The NJSA Internship will provide experience in planning and executing shows and leadership events for the nation's largest youth livestock organization. You will have the opportunity to assist NJSA staff with planning the World Pork Expo Junior National and the organization's pinnacle event, the National Junior Summer Spectacular, as well as help lead the NJSA Board of Directors, write NJSA Spotlight highlights, take photos and video, facilitate web updates and write articles. This internship provides experience in event planning, communications, youth leadership and livestock show production. For more information and to apply email NSR Director of Junior Activities Kaley Bontrager at kaley@nationalswine.com.

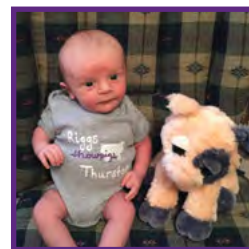
Births



Anders Douglas Baade
Born Sept. 15, 2014

Anders Douglas Baade

Proud parents Kyle and Laura Baade of Plymouth, Nebraska, are pleased to announce the birth of their son, Anders Douglas, Sept. 15. He crossed the scales at 10 pounds, 2 ounces and measured 22 inches long. Grandparents are Martin and Carol Anderson of Hitchcock, South Dakota, and Doug and Michele Baade of Rock Rapids, Iowa.



Carter Wayne Riggs
Born Sept. 21, 2014

Carter Wayne Riggs

Kyle and Jerrica Riggs of Alexandria, Indiana, are proud to announce the birth of their first child, Carter Wayne Riggs. He was born on Sept. 21. Carter weighed 6 pounds, 3 ounces and measured 19.5 inches long.

Obituaries



Russell Williams
1942-2014

Russell Bryant Williams

Graveside service was held Oct. 18, at Murray Cemetery in Young County under the direction of Morrison Funeral Home.

Williams was born Feb. 16, 1942, in Wichita Falls, Texas, to the late Amos and Joselie (Jenkins) Williams. He married Sallie Elizabeth Schmidt on Nov. 15, 1959, in El Paso, Texas. Williams was co-owner of WW Hog Farm in Young County.

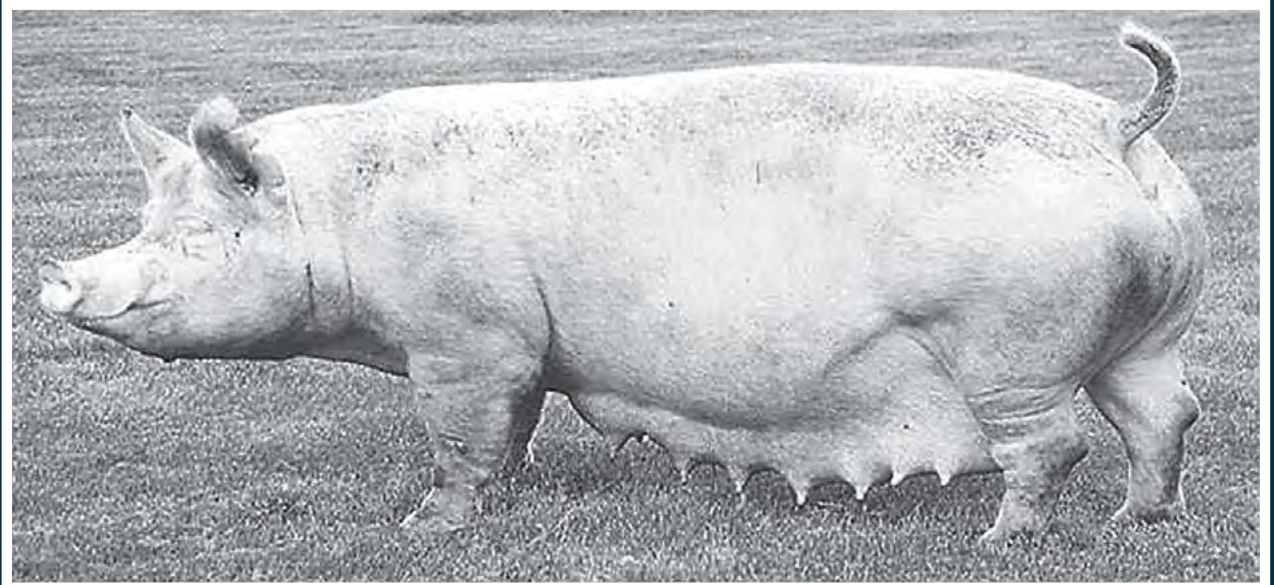
Survivors include wife, Sallie Williams, of Graham, Texas; daughter, Monica (Rob) Weil, of Boswell, Oklahoma; son, Matt (Staci) Williams, of Graham; grandchildren, Bobby and Kash Weil, Becki Foust, Kenneth, Cayla, Cara and Christa Williams; great-grandchildren, Hofflin, Kelton, Kypton and Jett Weil and Anslee Foust.

He was preceded in death by a son, Mark Williams.

McCulloh Family Genetics

Breeding Hogs for the Future

A picture is worth a thousand words...



...yet she still leaves us speechless!

M Unit One 12-5 X Mr Obvious 26-1

Miss Turk 18-8 possesses all the fundamentals in phenotype and sow productivity we strive to build upon in our program. While her structure and design are impeccable, she proves her true value with a solid track record in the farrowing house. Check out her pedigree online which combines some of the great genetics from Neher Acres, Rodibaughs and Waldos. She is bred to Razzle Dazzle due to farrow her 8th litter this fall. We are excited!



Razzle Dazzle 2-1

Razzle 62-10 X Spud Bar 9-1

Thanks to Al and Adam Conover for breeding hogs like this!

Chris and Murl McCulloh
563.249.1108
2266 180th Street
Delmar, Iowa 52037

Check out our website for more information
www.mccullohfamilygenetics.com

REAL

HOG FARMES

Genetics for Success



Chuck Real has been in the hog business for 50 years, married to his wife, Debbie, for 40 and coaching 4-H livestock judging for more than 30. Through the decades, Chuck and Debbie have served countless future leaders lunch from their kitchen table in Marion, Texas.



The Reals have created a Texas 4-H scholarship endowment to commemorate their 50 years in business. Friends of the Real family gathered to donate funds for the endowment in their honor. Visit the website to learn more about Texas 4-H scholarships.

50 years in the making

By Katie Maupin

The first sow to farrow as part of Real Hog Farms had her pigs on the 31st of July. Chuck Real's older brother, Tommy Real, who owned the sow, called their ag teacher in the wee hours to come help the brothers deliver this inaugural litter. That morning, Tommy says, "Gosh, I think I will just register these pigs as an Aug. 1 litter." Since classes were broken by months, an Aug. 1 birthdate would give the pigs an advantage in the ring, rather than being the youngest in the class. But, their ag teacher paused at the door and said, "You know and I know when those pigs were born, and we know what's right." So, the first Real-born pigs were officially farrowed on July 31.

The memory of his ag teacher – and then idol – pausing in the door to tell the boys to do what they know is right has stuck with Chuck for five decades.

"I'll never forget that," he says.

The lesson of doing things the right way – the ethical way – has been integral to the half a century the Real family has spent in the hog business, just as the Real family has been integral to creating the

next generation of swine industry leaders right there at their South-Central Texas home.

"I've worked with young people for years, and I've always kept that in mind, because they're always watching and listening," Chuck says. "You never know when you have a chance to influence somebody. That's part of the reason I still coach a 4-H livestock judging team and have for 30-something years. I just like working with young people, and a memory like that sticks with you."

Amid all the changes their Marion, Texas, farm has seen – and there have been a lot of them – the Reals' integrity and commitment to the next generation has remained constant.

As alluded to, Real Hog Farms started with a youth project. Tommy liked exhibiting hogs in FFA so much, he purchased a bred gilt. From that first litter, younger brother, Chuck, picked out a gilt, and Real Hog Farms was born. Although Tommy planted the seed for the family business, when he went off to college in '67, he decided the swine industry was not for him.

Chuck went off to college at Texas A&M University where he judged both meats and livestock for the collegiate team before graduating with a bachelor's in animal science in '74. He then completed his Master of Ag with an emphasis in swine production three years later. He, however, stuck with the swine business. Chuck stuck with it even as he originally found work off the farm as a county Extension agent and then the Texas A&M Swine Farm manager. He fully returned to it, in 1978, when circumstances pushed him back toward the family farm.

"I had every intention of going back to the farm, but I

had to go and be a county agent first,” Chuck explains. “You never know what the Lord is going to give you, though. He nudges you in different ways.”

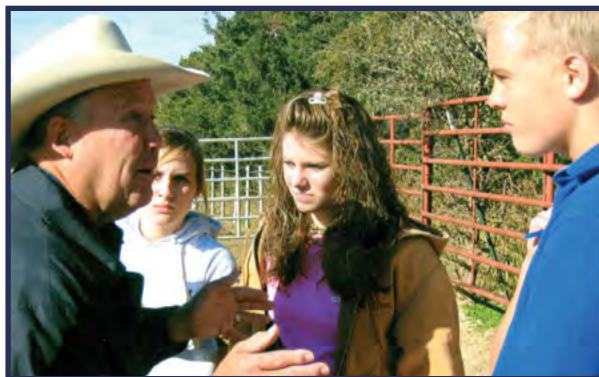
After being nudged home, the Reals have been through good times and bad, times of plenty and some moments when things were a bit tight. The CRE herdmark thrived during the era when purebred seedstock reigned supreme and herd boar sales were enough to support a family. The Reals had a reputation of creating hogs that could perform, and their genetics tested well to prove it. Often, the only thing constant is change, and as farms became more integrated and the best boars were often delivered

has never changed. Often, when we chase extremes, it takes us down paths we don’t need to be going down. Structurally-correct, good-balanced hogs – that’s what keeps you in business.”

His son, Russell Real, who returned to the farm five years ago and is now a full partner, echoes Chuck’s sentiments in regards to making hogs better.

“Our philosophy has always been to stay in the middle,” Russell says. “Trends swing from one extreme to an-

traits very highly,” he says. “That’s different from your typical Southwest showpig guy. He’s always believed in hogs that can do it on their own, and he still does. He wants hogs that will just grow and do well, and



Chuck Real has coached several champion 4-H livestock judging teams over the last three decades. He enjoys working with the youth and giving back to his community. Several of his former judges have gone on to play important roles in the industry.

“They have to be good structured, and that has never changed. Often, when we chase extremes, it takes us down paths we don’t need to be going down. Structurally correct, good balanced hogs – that’s what keeps you in business.”

— Chuck Real

to farms in a bottle rather than bought, the Reals’ business changed as well.

Today, they farrow approximately 110 sows year round. Two-thirds of their sow base is Yorkshire, and they own about 20 Durocs, 10 Berkshire, 10 Hampshire and a dab of crossbreds among the primarily purebred herd. The majority of these pigs are sold privately as showpigs off the farm. But, as Chuck will tell you, not every pig is cut out to be a showpig. So, the family has developed some niche markets to support their annual income including providing researchers with high-health pigs and supplying a local meat market with pork that receives a nice premium based upon carcass quality. They even have their own boar stud, which stands about 20 sires.

In addition to their swine operation, Real Farms has 750 acres in crops and a 75-head cow-calf operation.

While the way they market their pigs has changed dramatically over the last 20 years, the way they select hogs has not. Chuck has never been a fan of the extremes.

“I select on balance,” he says. “They have to be good structured, and that

other, and we’ve found if you stay in the middle, you never have very far to go.”

As the couple’s other son and State Fair of Texas vice president for agriculture and livestock, Daryl Real, will tell you, the lessons learned from the days when performance testing reigned supreme still hold true in Marion.

“Daddy always valued production

when they leave this farm, he wants them to get better every day.”

It’s this no-nonsense philosophy that has garnered Real Hog Farms many ribbons in the ring. Chuck is proud to have raised such champions as the 2014 CTBR Texas STARS Supreme Champion Gilt, 2012 World Pork Expo Reserve Champion Duroc Gilt, 1989 Berkshire



The Real Family at a recent gathering. Back row (L to R) – Sharee Real, Russell Real, Ryan Huebinger (holding Travis Huebinger), Laura Huebinger, Debbie Real, Chuck Real, Daryl Real, Sue Real
Front Row (L to R) – Kaleb Herfurth, Kage Herfurth, Erin Huebinger, Campbell Real, Kyle Real, and Grace Real (Not pictured, but recently born on July 10, 2014, to Daryl and Sue is Prestynne Real.)



The Reals have successfully shown many champion boars at the San Antonio Stock Show. Although they like to grab banners, Chuck is most proud of raising his family on the farm. Pictured (L to R): Russell, Chuck and Daryl Real.

Hog College® Boar and countless champion boars at shows such as San Antonio and Southwest Type Conference, but he is most proud of the fact he was able to raise his family on the farm.

“Raising our family up on the farm the way we wanted to – that was our goal to start with,” Chuck says. “That was our number one thing.”

If you ask any of Chuck and his wife, Debbie’s, three children what they learned growing up on Real Hog Farms, they’ll tell you they learned about hard work.

“We worked hard,” says daughter Laura Real Huebinger, District 8 4-H Extension specialist, “But, we always had fun. We had kind of an inside joke, because Dad would say, ‘It’s not that bad, but it needs to be done.’ That meant you were in for a real treat – some kind of challenge. But, he’s probably the hardest working person I know – him and my mom – they work hard, but they play hard too.”

If you were to ask about some of their favorite memories, they’ll tell you about lunch. Lunch at Real Hog Farms was more than just a quick bite – it was an event. Since Debbie worked off the farm, Laura was often tasked with heading to the house a little after 11 a.m. to hustle up some lunch. While the spread may not have been overly fancy, anything from leftovers to grilled burgers,

the entire Real Family and all of their help would gather around the table.

“Anytime I think of being back home, I think of lunchtime around the table,” Daryl says. “We always had cousins, neighbors or other kids working for us, and Daddy always provided lunch – that was the deal ... It was quite the sparring event, when you showed up for lunch at Real Hog Farm. There were a lot of boys who learned the art of a wisecrack, and we grew up a lot at that lunch table.”

There was more to be learned than cracking jokes over the summer in Marion, Texas, and working on the farm gave those kids the same opportunities to learn about hard work and dedication as the Real family.

Between their summer help, the 4-Hers Chuck has coached over the last three decades and the young people who came to Marion looking for their next showpig project, the Real family has impacted countless young people’s lives.

Nothing makes Chuck and Debbie happier than visiting with young people. Chuck sells most showpig prospects private treaty just so he can interact with the families that come to look, and Debbie is known to always have a fresh batch of cookies made for the judging teams, according to Laura.

Chuck always sets a positive example of conducting himself with integrity, and tells the kids to never give up and do what they know is right.

“Success will come,” he says. “Maybe not as quickly as you would like, but it will come.”

One such young person who has seen success is Robby Perkins, of Houston, Texas. Perkins first met Chuck, when his county Extension agent suggested he go there to look for a showpig project.

“I’ve always enjoyed going to Chuck’s place, visiting with him and talking hogs. He’s inspired me to do what I’m doing now,” Perkins says. “He has a passion for what he does. I see that he loves the industry, and I want to have the same passion he does.”

Perkins has a good start in the purebred swine industry with a gilt the Real family sold him in 2012. That Duroc female went on to grab

the Reserve Champion Gilt banner at the World Pork Expo. With Chuck’s guidance, Perkins brought her home, bred her and farrowed his first litter. That champion proved Real genetics breed on, and in 2013, her daughter was also named Reserve Champion Duroc Gilt in Des Moines, Iowa.

“He gives great advice. Probably the best advice Chuck gave me was just to stick with what I’m doing and do the right thing,” Perkins says. “The Reals tend to believe in following the path you think is right. They breed hogs like they think they should, rather than just following what everyone else is doing.”

Perkins shared some more stories about projects he’s purchased from the family like a class-winning gilt at the National Junior Summer Spectacular, but it was his final statement that shows the true worth of the Real family to this industry.

“They helped push me to do what I’m trying to do,” he says. “In the future, I want to be able to give someone that type of inspiration when I’m older.”

True to Perkins’ experience, Real Hog Farms’ website touts the slogan: Raising good hogs and better kids is what we’re all about.

“At the end of the day, Daddy’s given his entire life to the hog business and to youth development,” Daryl says. “The farm, the hogs, the people and the community – he and my mother have just poured their whole lives into them.”



The Real kids spent all summer farming with their father, Chuck. When asked what they learned, all of them will tell you work ethic.

FEATURE

Synch

By Ann Fry

UP





With a few products on the market designed to help swine producers control when their females come into heat, it's easy to get lost in the huddle. Yet, each product has their own place within the industry, and they can be beneficial tools, if understood and used properly. The newest pharmaceutical added to the estrus-synching arsenal is OvuGel®. This article outlines what OvuGel® does, how it should be used and how it can help producers capture the most value out of their herd.

PG 600® is designed to induce estrus in non-cycling gilts or sows that are delayed in returning to estrus after weaning. It is administered in a 5-mL dose injected under the skin. Animals treated with PG 600® will come into estrus three to seven days after treatment.

Matrix® synchronizes estrus in a group of gilts or sows. Matrix® is fed as a top dress once a day for 14 consecutive days. The gilts or sows in the group should come into heat four to nine days after Matrix® is removed from the diet.

OvuGel® was developed by JBS United Animal Health to also synchronize ovulation in sows after weaning. OvuGel® is unique because it is administered through a needle-free system, reducing the risk of accidental injury to the animals and the producer. Four days, or 96 hours, after weaning, every sow in the group is treated with one 2-mL dose of OvuGel®, intravaginally. Twenty-four hours later, or 120 hours after weaning, they are all bred using single-dose, fixed-time AI.

OvuGel® is not the same as PG 600® as it will not bring animals into heat. It is also different from Matrix® because with OvuGel®, a sow is bred whether she is observed in standing heat or not. OvuGel® eliminates the need to check heats prior to breeding, which a producer still has to do using Matrix®. Additionally, animals

treated with OvuGel® are treated, cycle and bred within hours of each other, instead of the five-day window between days four to nine with Matrix®.

Because all the females in the group treated with OvuGel® are bred regardless of standing heat, OvuGel® not only synchronizes ovulation in sows that are cycling normally, but also in a portion that are not and sows that got missed because of poor heat detection. This gives the producer extra bred sows that might have otherwise been culled.

A healthy, reproductively-normal sow will return to estrus within five to seven days after weaning. Traditionally, a sow is checked for heat twice a day during that time frame and bred 24 hours after being observed in standing heat. The next day, she will be bred a second time. Any sows not observed in standing heat in the five to seven day window will likely be culled.

Dr. Charlie Francisco, director of technical service for JBS United Animal Health, points out breeding should be completed before the 120 hours is over. For example, if the sows are weaned at 7 a.m. and treated at 7 a.m. on day four, the breeding should be completed by 7 a.m. on day five. Some sows will spontaneously ovulate at 122 or 123 hours post weaning, and they should be bred before ovulation occurs. If the breeder were to wait and begin breeding at 7 a.m. on day five and it takes two or three hours to get all the sows bred, the sows at the end may have

already ovulated before they are bred.

Francisco also says while sows treated with OvuGel® can be bred without being in standing heat, it is still a good idea to keep track of the sows that display estrus and those that don't. In a group of 100 sows treated with OvuGel®, approximately 90 will be in standing heat by day five post weaning. Those are the normal estrus, healthy-returning sows. The conception rate for those sows should be the same as if they had been bred without OvuGel®, if treatment and insemination are done correctly. The other 10 sows, the late returners or anestrus sows, will not be in standing heat. By using OvuGel® and inseminating those 10 sows not displaying heat, three of them will be successfully bred. Francisco calls those the opportunity sows.

"All the sows that were in standing heat, those ones in estrus, that is where your true conception rate is," he says. "The ones that weren't in standing heat should be put in another column that just shows opportunity or extra pigs. Those sows wouldn't have gotten mated in that group, traditionally, because they didn't exhibit heat."

Aside from catching sows that wouldn't have been bred otherwise, Dean Dau, director of sales for JBS United Animal Health, says there are three other areas producers want to improve using OvuGel®. The first is labor savings and labor utilization. Instead of having to spend hours checking heat, sows are all bred at a

certain time and monitored for heat during breeding. They are also only inseminated once, whereas they traditionally would be rebred the next day.

“For some operations, this system can free up their best technicians to get more sows bred,” Dau says. “OvuGel® offers producers a tool to maximize the people and sows already on the farm to have more pigs born alive.”

The second reason producers use OvuGel® is genetic leverage. Since sows treated with OvuGel® are bred using single-dose, fixed-time AI, the average farm has a 30 percent reduction in semen usage. With less total semen needed, more powerful and genetically appealing boars become more affordable.

Dr. Clint Schwab, director of genetics at The Maschhoffs, sees genetic leverage as a big advantage for OvuGel®. In a traditional breeding system, The Maschhoffs use an average of 2.3 doses of semen per sow per breeding. With OvuGel®, the number decreases to 1.7 doses of semen. With the reduction in semen, better boars can be utilized and fewer of them are needed.

Finally, Dau sees producers use OvuGel® for farrowing. Because the sows are grouped and bred on one day, they will farrow within a tighter time window. A producer can also be more confident in inducing labor, if he wanted some sows to farrow at a certain time, because he knows when the start of conception was. Using OvuGel® can also help producers plan labor concentration in the farrowing barn and lactation length to increase productivity.

Kade Hummel, Lindner United Feed sales manager, adds if a producer

has some key sows they want to get bred, OvuGel® is a great tool.

“If you have some key sows that are having trouble consistently farrowing or getting in synch with the group, try OvuGel®,” he says. “It will get them bred and in the flow of farrowing with the rest of the herd.”

In Hummel’s opinion, the greatest advantage of OvuGel® is taking out the guess work of breeding sows. By using OvuGel®, producers can just breed their sows without having to guess if the sow was in standing heat or not, saving time, labor and worry.

What intrigued Blane Olson of Lincoln, Illinois, was the ability to control the timing of breeding. As a grain farmer, he wanted to be able to work his breeding schedule around corn planting, and OvuGel® would allow him to do this. Olson was able to breed his sows on a set schedule, but he found his facilities were not set up to make using OvuGel® very efficient. Olson doesn’t use gestation crates with his small sow herd, so he spent a lot of extra time trying to get the sows to a makeshift crate, and then cooperate while he administered the treatment. He wasn’t able to put the OvuGel® in correctly, which lowered his conception rate from more than 90 percent to only 70 percent.

Olson says if he had some kind of crate or individual feeding system the sows could be fed in for a week before treating with OvuGel®, it would have made the process easier, more accurate and more efficient. The more that can be done prior to treatment to reduce stress on the animal and the producer, the more successful

the treatment will be. He recommends anyone considering OvuGel® have a plan in place before using it.

“I think OvuGel® has a place in the industry and can be an extremely helpful tool, if you have a plan in place, but I would not recommend someone just decide they’re going to do it one day, walk out and attempt it,” Olson says.

Schwab echoes Olson in that a producer should not just decide to use OvuGel® without understanding the technology. Start slow, he says, and develop a comfort level with the technology, how to administer it and when it should be used before treating the whole herd. Part of understanding the technology also means understanding the biology of the sow.

“One of the biggest misconceptions is that you don’t have to check heat at all,” he says. “It is still good to watch for heats. Showpigs, especially, are managed differently and can have irregular heat cycles and may cycle before OvuGel® gets administered.”

A lot of research and discussions with experts should be done before any producers decide to use OvuGel® in their operation. Schwab’s advice is to get to know somebody that has successfully used OvuGel®. Learn what to do and what not to do. Know what to watch for before you ever use it to make sure it gets used correctly.

“If people understand how to use OvuGel® correctly, it can be tremendously beneficial,” he says.



Product	Treatment Administration	Target Age	Purpose	Time to Estrus	Breeding
PG 600®	One 5-mL subcutaneous (SubQ) dose	Gilts or sows	Induce estrus in non-cycling gilts or delayed sows	3-7 days after treatment	Bred with two doses after observed standing heat
Matrix®	Top dressed on feed for 14 days	Gilts or sows	Synchronize estrus in a group of gilts or sows	4-9 days after treatment	Bred with two doses after observed standing heat
OvuGel®	One 2-mL intravaginal dose	Sows	Synchronize estrus in sows after weaning	120 hours, or 5 days, after weaning	Bred using single-dose, fixed-time AI before 120 hours post-weaning



NJSA

Raising pigs. Raising kids.

Raising our future!

NATIONAL JUNIOR SWINE ASSOCIATION

Yes, I want to support the future of NJSA! Please invoice me for the following amount:

NJSA Boosters \$50-499

\$ _____

NJSA Backers \$500-2,499

\$ _____

NJSA Advocates \$2,500-4,999

\$ _____

NJSA Allies \$5,000-19,999

\$ _____

NJSA Visionaries \$20,000 +

\$ _____

I would like to make my 2015 contribution in the following way:

- Check (enclosed)
- Invoice me: Jan. 1 July. 1 Dec. 1 (choose one)
- Other (NJSA will contact you for invoicing options)

Name: _____

Address: _____

City/State/ZIP: _____

Phone: _____ Cell: _____

Email: _____

Yes, I would like to receive emails with information on NJSA.

All of us at the
NATIONAL SWINE REGISTRY
wish you great success in
the year to come.



Merry
Christmas
and a Happy New Year!



(l to r)

- MIKE PAUL, Chief Executive Officer
- DR. DOUG NEWCOM, V.P. of Global Technical Service
- BRIAN ARNOLD, V.P. of Member Outreach & Youth Development
- MINDEE POLLARD, Controller
- ROBIN LUCAS, Office Manager & Yorkshire Secretary
- LISA KENNEDY, Administrative Assistant
- WHITNEY HENDRICKS, Junior Program Assistant & Landrace/Duroc Secretary
- WHITNEY WEBB, Hampshire & DNA Secretary
- KALEY BONTRAGER, Director of Junior Activities
- ELLEN OLSON, Junior Activities Coordinator
- KATIE MAUPIN, Director of Marketing & Communications
- STEPHEN WEINTRAUT II, Creative & Web Development Director
- ANN FRY, Assistant Editor & Advertising Coordinator
- MICHAEL LACKEY, Northwest Field Representative
- BRIAN ANDERSON, Southwest Field Representative
- BLAINE EVANS, Eastern Field Representative

Sponsored by the
National Swine Registry

CONTEST

2015 NATIONAL PICTURE JUDGING CONTEST

The data used in this contest is intended for educational purposes and is not the actual data for the pigs pictured. The figures accompanying the pictures will be used by our official judges, however, to determine the official placings.

To enter the contest mail in the included form or visit nationalswine.com to enter online.



2015 National Picture Judging Contest

Official Entry Form*

Instructions

1. Rank the animals in each of the 10 classes listed to the left
2. Mark the official entry form (left) with the letter that corresponds to your placing for each class
3. Only one letter placing per class

- Letter
- Class 1 Duroc Boars
- Class 2 Hampshire Boars
- Class 3 Landrace Boars
- Class 4 Yorkshire Boars
- Class 5 Prospect Duroc Gilts
- Class 6 Hampshire Gilts
- Class 7 Landrace Gilts
- Class 8 Yorkshire Gilts
- Class 9 Grand Drive Barrows
- Class 10 Crossbred Market Hogs

1	2	3	4	A
1	2	4	3	B
1	3	2	4	C
1	3	4	2	D
1	4	2	3	E
1	4	3	2	F
2	1	3	4	G
2	1	4	3	H
2	3	1	4	I
2	3	4	1	J
2	4	1	3	K
2	4	3	1	L

3	1	2	4	M
3	1	4	2	N
3	2	1	4	O
3	2	4	1	P
3	4	1	2	Q
3	4	2	1	R
4	1	2	3	S
4	1	3	2	T
4	2	1	3	U
4	2	3	1	V
4	3	1	2	W
4	3	2	1	X

Entries must be postmarked or entered online by Feb. 1, 2015

Individual divisions:
 Junior division College division Adult division For office use only: _____

Name _____

Address _____ City _____ State _____ Zip _____

Phone _____ E-mail _____

Team divisions:
 4-H Team FFA Team College Team For office use only: _____ For office use only: _____

(4-H and FFA team must have four members ONLY; College team must have five members ONLY)

PRINT team members' names: 1. _____ 2. _____

3. _____ 4. _____ 5. _____

School or Club Name _____

Address _____ City _____ State _____ Zip _____

Results

Official placings, reasons and contest winners will appear online at www.nationalswine.com after April 15, 2015, and in the April/May 2015 issue of *Seedstock EDGE*. All ties will be broken by the highest score in chronological class order. First- through fifth-place will be named in each division, and plaques will be awarded to the first-place winner of each division.

Divisions

Individual divisions include Junior, Collegiate and Senior. Team divisions include 4-H, FFA and College. Teams MUST consist of: 4-H and FFA – four total members (no more, no less); College – five total members (no more, no less). There is NO MAXIMUM number of teams per school or club, but each team must have a different name.

Entries

Each individual may enter only ONE time, either as an individual or on one team (i.e., cannot enter on both a 4-H and an FFA team). All team entries will automatically be entered as individuals as well. Enter online at www.nationalswine.com, or mail legible entries to: Picture Judging Contest, 2639 Yeager Rd., West Lafayette, IN 47906.

Additional copies of this form can be downloaded at www.nationalswine.com. No reprints will be mailed from the NSR office. Remember, this is an educational event.

Each individual or team member must complete their own entry form, and only one entry should appear on each mailed form. This contest is open to all purebred seedstock enthusiasts in the United States.

***Enter online at nationalswine.com!**

EXPLANATION OF TERMS:

Expected Progeny Difference (EPD) – An EPD is the best estimate of a sire's or dam's genetic worth, given the information available. It is the actual difference in performance a producer can expect from future progeny of a sire or dam, relative to the future progeny of an average tested parent.

Swine Testing and Genetic Evaluation System (STAGES™) – A genetic evaluation system provided to the members of the four breed associations of the National Swine Registry (NSR). STAGES™ utilizes performance records for numerous growth, carcass and maternal measures to predict the genetic value of each pig and its parents.

EPDs:

Backfat (BF): Expressed in inches, this EPD is a predictor of the difference in external fat thickness at the 10th rib. Animals with negative (-) EPDs for backfat will produce offspring that have less backfat at harvest than offspring of parents with higher EPDs.

Pounds of Lean (LBS): A genetic predictor of pounds of fat-free lean adjusted to a 185-pound carcass, or approximately a 250-pound live weight. This EPD is calculated from the EPDs for Backfat and Loin Eye Area. A sire with a positive (+) EPD for LBS will produce offspring that yield a higher percentage of lean and have a greater chance of obtaining full-value on a lean-based carcass grid.

Days to 250 pounds (DAYS): A prediction of an individual's genetic merit for growth performance to a 250-pound live weight. Animals with a negative (-) EPD for DAYS will produce offspring that require fewer days to reach market weight when compared to the offspring of individuals with positive (+) genetic values for DAYS. Selection on this EPD will produce progeny that aid in earlier building close outs.

Feed Efficiency (FE): Expressed in pounds, this EPD is a predictor of the amount of feed required to generate one pound of gain during the finishing phase of production and is calculated from the EPDs for BF and DAYS. Selection of sires with negative (-) EPDs will produce progeny that more efficiently convert feed to gain when compared to sires with higher EPDs for FE. This EPD can be used to genetically decrease feed costs.

Number Born Alive (NBA): An expression of the genetic merit for the number of live pigs farrowed in a litter. Daughters of sires with positive (+) EPDs for NBA will farrow a greater number of live pigs than daughters of sires with lower EPDs for NBA.

Number Weaned (NW): A genetic predictor of the total number of pigs weaned within a given parity. Daughters of sires with positive (+) EPDs for NW will wean larger litters than daughters of sires with lower genetic values for NW.

Loin Eye Area (LEA): Expressed in square inches, this EPD is a predictor of an individual's genetic merit for 10th rib loin eye area adjusted to a 250-pound live weight. Animals with a positive (+) EPD for LEA will produce progeny with more loin muscle when compared to the offspring of animals with negative (-) genetic values for LEA.

Wean to Estrus Interval (WTE): Expressed in days, this EPD is a genetic predictor of the number of days required for a female to return to a serviceable heat after weaning. Daughters of sires with negative (-) EPDs for WTE will require fewer days to return to estrus after weaning than daughters of sires with higher EPDs. This EPD is the most efficient selection tool for genetic improvement of fertility and non-productive sow days.

Sow Productivity Index (SPI): An economic index that ranks individuals for reproductive traits. SPI weights the EPDs for Number Born Alive, Number Weaned and Litter Weight relative to their economic values. Each point of SPI represents \$1 per litter produced by every daughter of a sire. When sow efficiency is the primary concern, SPI may be the most effective selection tool for simultaneous improvement of maternal traits.

Maternal Line Index (MLI): An economic index designed for selection of seedstock used to produce replacement gilts for crossbreeding programs. MLI weights EPDs for both terminal and maternal traits relative to their economic values, with approximately twice as much emphasis on reproductive traits relative to post-weaning traits. Each point of MLI represents \$1 per litter produced by every daughter of a sire.

Terminal Sire Index (TSI): An economic index designed for the selection of seedstock for use in a terminal crossbreeding program. Animals selected for high TSI are designed to excel in lean growth and efficiency from weaning to harvest. TSI weights EPDs for Backfat, Days to 250 Pounds, Pounds of Lean, and feed/pound of gain relative to their economic values. Each additional index point difference is equal to \$0.10 per market hog.

Actual Data:

Weight Per Day of Age (Wda): Based on actual weight and age, this measure is the weight gained per day of age averaged over the life of the pig.

10th Rib Backfat (Bf): Expressed in inches, this is an actual ultrasound measure of backfat at the 10th rib and is adjusted to 250 pounds.

Loin Eye Area (Lea): Expressed in square inches, this is the actual ultrasound measurement of the loin eye size at the 10th rib and is adjusted to 250 pounds.

Intramuscular Fat (Imf): Expressed as a percentage, this value is an ultrasound measure of the lipid content of the loin muscle. Higher levels of Transmuscular Fat (IMF) are desired for meat quality based markets.

Actual Number Born Alive (Nba): This value is the actual number of pigs born from the dam's parity when the pig was born and are measurements taken from the pig's dam.

Actual Number Weaned (Nw): This value is the actual number of pigs weaned from the dam's parity when the pig was born and are measurements taken from the pig's dam.

Litter Weight (Lwt): This is the actual cumulative weight of all pigs weaned from the pigs birth litter. This weight is recorded on the pig's dam and is adjusted to 21 days of lactation.

Class 1 – Duroc Boars Scenario: Rank these boars as they would be selected for use in a purebred operation that capitalizes on the demands of a strong, regional niche market, which generates premiums through a branded pork program.

Class 2 – Hampshire Boars Scenario: Rank these boars as they would be selected for use as terminal sires on F1 Yorkshire x Landrace gilts.



-2.0 DAYS, -0.03 BF, +1.17 LBS, -0.01 IMF



-2.0 DAYS, -0.02 BF, -0.01 FE, 107 TSI



-3.2 DAYS, -0.02 BF, +1.21 LBS, +0.14 IMF



-3.2 DAYS, -0.01 BF, -0.03 FE, 113 TSI



-3.6 DAYS, -0.01 BF, +1.19 LBS, +0.19 IMF



-1.1 DAYS, -0.03 BF, +0.01 FE, 104 TSI



-1.8 DAYS, -0.01 BF, +1.09 LBS, +0.06 IMF



-3.5 DAYS, 0.00 BF, -0.04 FE, 112 TSI

Class 3 – Landrace Boars Scenario: Rank these boars as they would be selected for use on an elite set of Landrace females owned by a NJSA member that is focused on competing in the NJSA Premier Breeder program.



Actual Data: 159 Days, 0.78 Bf, 8.4 Lea



Actual Data: 157 Days, 0.81 Bf, 8.0 Lea



Actual Data: 161 Days, 0.83 Bf, 7.5 Lea



Actual Data: 156 Days, 0.72 Bf, 8.2 Lea

Class 4 – Yorkshire Boars Scenario: Rank these boars as they would be purchased by a genetic company that merchandises seedstock and semen to domestic and international customers.



EPDs: +0.22 NBA, +0.03 WTE, 103 MLI



EPDs: +0.26 NBA, -0.12 WTE, 110 MLI



EPDs: +0.35 NBA, -0.20 WTE, 116 MLI

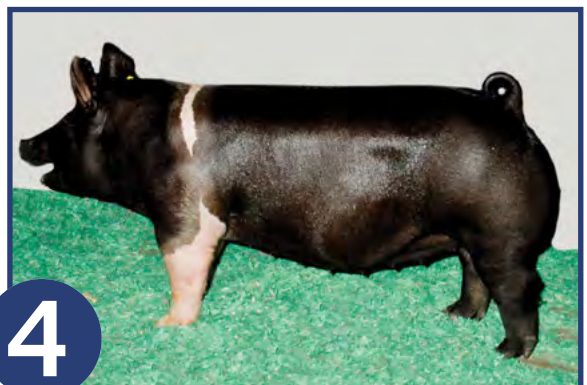


EPDs: +0.28 NBA, -0.09 WTE, 112 MLI

Class 5 – Prospect Duroc Gilts Scenario: Rank these gilts as they would be purchased in an online sale by a NJSA member for exhibition. These gilts will be shown at NJSA shows and will ultimately be retained in a small purebred operation to generate future show offspring.



Class 6 – Hampshire Gilts Scenario: Rank these gilts as they would be purchased through the NSR Summer Type Conference sale to serve as cornerstone females for a start-up purebred showpig operation.



Class 7 – Landrace Gilts Scenario: Rank these gilts as they would be selected as replacements in a purebred operation that markets seedstock to large multipliers who utilize Landrace and Yorkshire genetics as the maternal foundation of their production herds.



EPDs: +0.26 NBA, -0.02 WTE, 108 SPI



EPDs: +0.31 NBA, -0.01 WTE, 111 SPI



EPDs: +0.27 NBA, -0.01 WTE, 109 SPI

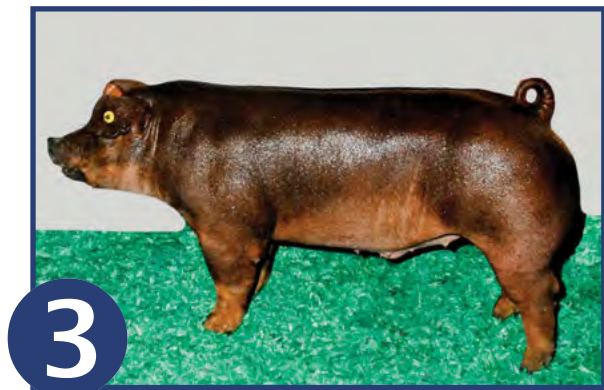


EPDs: +0.25 NBA, +0.02 WTE, 104 SPI

Class 8 – Yorkshire Gilts Scenario: Rank these gilts as they would be selected as the foundation females for a club pig operation that is seeking Yorkshire genetics to increase the consistency and quality of their crossbred breeding program.



Class 9 Grand Drive Barrows



Class 10 Crossbred Market Hogs



SHOW MOM

Monthly

By Katie Maupin

Lucy Guyer

Robinson, Illinois

Husband: Dave

Children: Ashtin-13 and Nalaney-10

Proudest "Show Mom" moment:

My proudest moment was when Nalaney showed the grand Champion Market Hog at the 2014 National Western Stock Show! Not only was I so proud of her and what she had accomplished, but also the group of exhibitors and adults, not only from the swine industry but the beef industry as well, that were there to support Nalaney. It was overwhelming! It still brings tears to my eyes!

Favorite part of being a "Show Mom": This would have to be the many hours, we as a family, spend getting ready for each show! The time we spend doing the chores together are my favorite. We listen to each others' opinions on which pig might be the best and why. I also love walking the pigs! We do judging classes with each group we walk. (I ask the questions most of the time - ha!) It's not all fun and laughs, and yes, it is a lot of work, but this is what makes us grow. I feel it gives our kids a great work ethic! It makes it all worth it, when your family says, "Wow, Mom, you're doing a great job. Thanks for all of your help!" Outside of our show barn, at the shows, I love meeting other, "Show Moms." The stories we share have so many similarities, yet we learn from each other!

Crisis averted as a "Show Mom": Our girls take showmanship to heart. This past World Pork Expo, when the girls were in showmanship, the weather was getting pretty scary, as Ashtin says. Ashtin made it out of her class and was going to go back in for the semi-finals, when she told me she didn't want to do well because of the storm. I told her, "Pray, have faith and God is watching over you." She looked up at me and said with a smile, "got it, Mom!"

Your ability to drive a stock trailer is best described as: One day, I heard the girls talking to a neighbor who asked about me driving the trailer. They told her, "She drives it like it's her job!" I grew up helping on our family farm driving tractors and pulling wagons. I guess it's part of my "job."

Best tip you can give to other "Show Moms": Patience! Be a good role model for your children and others' children that may be watching. Remember, your kids are learning and trying to do their best. We all have good and bad days, so I always try to use positive criticism. Children learn by example!

Recipe for life on the show road: Faith and prayer - it's a no fail recipe.



Raised in a BARN



Kaden Pike, OH



Carter Cooley, IA

Perhaps, there is no better place for kids to grow up than in a barn. Here are some snap shots of youth who love this industry. If you have a fun photo to share, email it to katie@nationalswine.com for a chance to be featured in 'Raised in a Barn.'



Wyatt Basham, OH



Ashley Franco, TX



Aricka Funk, CO

National Junior Swine Association

SHOWS



SHOWS

2014

Eastern Regional

Hamburg, N.Y. • Oct. 9-11



EVENTS: Purebred and crossbred gilt and barrow shows, showmanship, skillathon and sweepstakes contests

JUDGE: Jeremy Jones, Ind.

NO. OF PARTICIPANTS: 104 from 11 states

WINNINGS

Overall gilt won: One-year lease of an Exiss Trailer

Overall barrow won: \$375

Res. overall gilt won: \$500

Res. overall barrow won: \$250

Breed & crossbred champions won: \$250

Breed & crossbred reserve champions won: \$100



Champion Overall Barrow & Champion Duroc Barrow
Shown by Mackenzie Hodupp, Ind.



Champion Overall Gilt & Champion Yorkshire Gilt
Shown by Hannah Zundel, Pa.



Res. Champion Overall Barrow & Champion Hampshire Barrow
Shown by Maddie Fugate, Ill.



Res. Champion Overall Gilt & Champion Hampshire Gilt
Shown by Maddie Fugate, Ill.



Champion Duroc Gilt
Shown by Mackenzie Hodupp, Ind.



Reserve Champion Duroc Gilt &
Champion Bred-and-Owned Duroc Gilt
Shown by Brandon Stickler, Ill.



Reserve Champion Bred-and-Owned
Duroc Gilt
Shown by Taylor Brown, Ind.



Reserve Champion Hampshire Gilt
Shown by Cailyn Hines, Mich.



Champion Bred-and-Owned
Hampshire Gilt
Shown by Marissa Miller, Pa.



Reserve Champion Bred-and-Owned
Hampshire Gilt
Shown by Jessee Stewart, Ohio



Champion Landrace Gilt
Shown by Maddie Fugate, Ill.



Reserve Champion Landrace Gilt
Shown by Maddie Fugate, Ill.



Champion Bred-and-Owned Landrace Gilt
Shown by Chasten McConn, Pa.



Reserve Champion Yorkshire Gilt
Shown by Mackenzie Kiko, Ohio



Champion Bred-and-Owned Yorkshire Gilt
Shown by Sarah Nesbitt, Pa.



Reserve Champion Bred-and-Owned
Yorkshire Gilt
Shown by Brandon Stickler, Ill.



Champion Crossbred Gilt
Shown by Scott Gardner, Pa.



Reserve Champion Crossbred Gilt
Shown by Sarah Espey, Pa.



Reserve Champion Duroc Barrow
Shown by Nick Gardner, Pa.



Reserve Champion Hampshire Barrow
Shown by Brandon Laird, Pa.



Champion Landrace Barrow
Shown by Chasten McConn, Pa.



Reserve Champion Landrace Barrow
Shown by Rachael Harper, N.Y.



Champion Yorkshire Barrow
Shown by Scott Gardner, Pa.



Reserve Champion Yorkshire Barrow
Shown by Brendan Knoll, N.Y.



Champion Crossbred Barrow
Shown by Payton Hines, Mich.



Reserve Champion Crossbred Barrow
Shown by Maddie Fugate, Ill.

SHOWS

Contests



Novice Showmanship – Top 10

Front (l-r): 1st: Jesse Stewart, Ohio; 2nd: Konner May, Ohio; 3rd: Brenna Mortensen, Mich.; 4th: Carter Arbuckle, Mich.; 5th: Nolan Arbuckle, Mich. **Back (l-r):** 6th: Clint Nesbitt, Pa.; 7th: Chasten McConn, Pa.; 8th: Miley Edelman, Ohio; 9th: Sadie Popejoy, Ind.; 10th: Lillian Stewart



Junior Showmanship – Top 10

Front (l-r): 1st: Halle Morehead, Ohio; 2nd: Shelby Morehead, Ohio; 3rd: Conner Smock, Ohio; 4th: Johnathan Smock, Ohio; 5th: Gracee Stewart, Ohio **Back (l-r):** 6th: Kendra Marty, Ohio; 7th: Dalton Bull, Ohio; 8th: Lucas Hayman, Pa.; 9th: Shalihn Popejoy, Ind.; 10th: Mackenzie Hodupp, Ind.



Intermediate Showmanship – Top 10

Front (l-r): 1st: Cailyn Hines, Mich.; 2nd: Skylar Knapp, Ind.; 3rd: Maddie Fugate, Ill.; 4th: Taylor Conley, Pa.; 5th: Mackenzie Kiko, Ohio **Back (l-r):** 6th: Payton Hines, Mich.; 7th: Morgan Miller, Pa.; 8th: Hunter Homing, Ohio; 9th: Madison Cook, Del.; 10th: Macy Scott, Kan.



Senior Showmanship – Top 10

Front (l-r): 1st: Taylor Brown, Ind.; 2nd: Hannah Zundel, Pa.; 3rd: Sarah Espey, Pa.; 4th: Cole Riddle, Ohio; 5th: Scott Gardner, Pa. **Back (l-r):** 6th: Allison Gowanlock, N.Y.; 7th: Taylor Edelman, Ohio; 8th: Garrett See, N.C.; 9th: Brendan Knoll, N.Y.; 10th: Marisa Linton, N.C.



Novice Skillathon – Top 10

Front (l-r): 1st: Carter Arbuckle, Mich.; 2nd: Clint Nesbitt, Pa.; 3rd: Chasten McConn, Pa.; 4th: Kamryn Harper, N.Y.; 5th: Gabe Fortin, Pa. **Back (l-r):** 6th: Jesse Stewart, Ohio; 7th: Avery Arbuckle, Mich.; 8th: Konner May, Ohio; 9th: Brenna Mortensen, Mich.; 10th: Kylene Stierly, N.Y.



Junior Skillathon – Top 10

Front (l-r): 1st: John Stierly, N.Y.; 2nd: Kendra Marty, Ohio; 3rd: Gracee Stewart, Ohio; 4th: Mackenzie Hodupp, Ind.; 5th: Conner Smock, Ohio **Back (l-r):** 6th: Sara Stierly, N.Y.; 7th: Lucas Hayman, Pa.; 8th: Johnathan Smock, Ohio; 9th: Lilly Underburg, Ind.; 10th: Shalihn Popejoy, Ind.



Intermediate Skillathon – Top 9

Front (l-r): 1st: Taylor Conley, Pa.; 2nd: Maddie Fugate, Ill.; 3rd: Andy Bontrager, N.Y.; 4th: Paige Stahl, Pa.; 5th: Madison Cook, Del. **Back (l-r):** 6th: Brandon Stickler, Ill.; 7th: Skylar Knapp, Ind.; 8th: Katie Stull, Ohio; 9th: Hunter Homing, Ohio
Not Pictured: 10th: Michael Kibbe, N.Y.



Senior Skillathon – Top 10

Front (l-r): 1st: Mindy Cook, Del.; 2nd: Sarah Nesbitt, Pa.; 3rd: Marisa Linton, N.C.; 4th: Sarah Espey, Pa.; 5th: Cole Riddle, Ohio **Back (l-r):** 6th: Garrett See, N.C.; 7th: Hannah Zundel, Pa.; 8th: Ryan Riddle, Ohio; 9th: Brendan Knoll, N.Y.; 10th: Heidi Benner, Md.



Novice Sweepstakes – Top 10

Front (l-r): 1st: Carter Arbuckle, Mich.; 2nd: Jesse Stewart, Ohio; 3rd: Chasten McConn, Pa.; 4th: Konner May, Ohio; 5th: Brenna Mortensen, Mich. **Back (l-r):** 6th: Clint Nesbitt, Pa.; 7th: Kamryn Harper, N.Y.; 8th: Miley Edelman, Ohio; 9th: Nolan Arbuckle, Mich.; 10th: Kenner Selby, Ind.



Junior Sweepstakes – Top 10

Front (l-r): 1st: Kendra Marty, Ohio; 2nd: Gracee Stewart, Ohio; 3rd: Conner Smock, Ohio; 4th: Johnathan Smock, Ohio; 5th: Shelby Morehead, Ohio **Back (l-r):** 6th: Mackenzie Hodupp, Ind.; 7th: Lucas Hayman, Pa.; 8th: John Stierly, N.Y.; 9th: Halle Morehead, Ohio; 10th: Dalton Bull, Ohio



Intermediate Sweepstakes – Top 10

Front (l-r): 1st: Taylor Conley, Pa.; 2nd: Maddie Fugate, Ill.; 3rd: Skylar Knapp, Ind.; 4th: Cailyn Hines, Mich.; 5th: Madison Cook, Del.; **Back (l-r):** 6th: Paige Stahl, Pa.; 7th: Mackenzie Kiko, Ohio; 8th: Brandon Stickler, Ill.; 9th: Payton Hines, Mich.; 10th: Morgan Miller, Pa.



Senior Sweepstakes – Top 10

Front (l-r): 1st: Sarah Espey, Pa.; 2nd: Hannah Zundel, Pa.; 3rd: Mindy Cook, Del.; 4th: Taylor Brown, Ind.; 5th: Sarah Nesbitt, Pa.; **Back (l-r):** 6th: Cole Riddle, Ohio; 7th: Scott Gardner, Pa.; 8th: Allison Gowanlock, N.Y.; 9th: Brendan Knoll, N.Y.; 10th: Taylor Edelman, Ohio



Exhibitors at the NJSA Eastern Regional show off their creativity in the Pumpkin Painting Contest.



Mackenzie Hodupp from Indiana drives her Duroc barrow for judge Jeremy Jones. Hodupp's barrow went on to be named Grand Champion Barrow Overall.



The Grand Champion Overall and Champion Yorkshire Gilt was exhibited by Hannah Zundel of Pennsylvania.

SHOWS



STATE FAIR
OF
TEXAS
LIVESTOCK SHOW



SHOWS

2014 Ak-Sar-Ben

Omaha, Neb. • Sept. 27-28

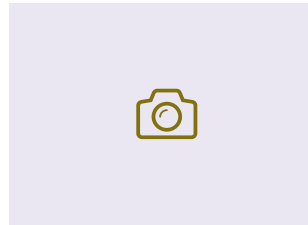
JUDGE: Jim McCoy, Ohio



Grand Champion Overall Market Hog,
Champion Overall Market Barrow &
Champion NSR Market Barrow
Shown by James Dobbels, Iowa



Res. Grand Champion Overall Market Hog
& Champion Overall Market Gilt
Shown by Blake Holmes, Kan.



Res. Champion Overall Market Barrow
Shown by Jesse Hoblyn, Neb.



Res. Champion Overall Market Gilt &
Champion NSR Market Gilt
Shown by Tyler Wellman, Iowa



Res. Champion NSR Market Barrow
Shown by Brody Nemecek, Kan.



Res. Champion NSR Market Gilt
Shown by Noah Hohenstein, Minn.

2014 Cow Palace Grand National

Daly City, Calif. • Oct. 18-19

JUDGE: Jason Lackey, Texas



Grand Champion Classic Hog
& Champion Progress Hog
Shown by Wyatt DeBusk



Res. Grand Champion Classic Hog
& Res. Champion Progress Hog
Shown by Jaylyne Serpa



Champion Prospect Hog
Shown by Nelson Hanson



Res. Champion Prospect Hog
Shown by Jaylyne Serpa



Champion Market Hog
Shown by Kyler Vernon



Res. Champion Market Hog
Shown by Kyle Azevedo



Supreme Champion Gilt
Shown by Brianna Cebollero



Supreme Champion Boar
Shown by Lauren Bliss



Res. Supreme Champion Gilt
Shown by Jackson Calbreath



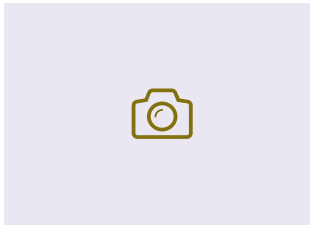
Res. Supreme Champion Boar
Shown by Austin Edwards

2014 Keystone Int'l Livestock Expo

Harrisburg, Pa. • Oct. 2-3 JUDGE: Al Schminke, Iowa



Champion Duroc Boar
Shown by Jon Harrison



Reserve Champion Duroc Boar
Shown by Ken Bauer and Heidi Benner



Champion Duroc Gilt
Shown by Ken Bauer and Heidi Benner



Reserve Champion Duroc Gilt
Shown by Lance and Mitchell Westcamp



Champion Hampshire Boar
Shown by Ken Bauer and Heidi Benner



Reserve Champion Hampshire Boar
Shown by Dave Holloway



Champion Hampshire Gilt
Shown by Sarah Nesbitt



Reserve Champion Hampshire Gilt
Shown by Ken Bauer and Heidi Benner



Champion Landrace Boar
Shown by Lance and Mitchell Westcamp



Champion Landrace Gilt
Shown by Lance and Mitchell Westcamp



Reserve Champion Landrace Gilt
Shown by Grant Lazarus



Champion Yorkshire Boar
Shown by Ella Jordan



Reserve Champion Yorkshire Boar
Shown by Rachel Nesbitt



Champion Yorkshire Gilt
Shown by Colby Hough



Reserve Champion Yorkshire Gilt
Shown by Catherine Largent

CLASS 1 DUROC BOARS

- 1st: Jon Harrison, MD, 1-2 (SMIB2 ROLLING ROCK 4-1)
- 2nd: Ken Bauer and Heidi Benner, MD, 2-1 (TYAG2 OFF LABEL 1-1)
- 3rd: Charles Koegel, NY, 8-8 (NWEI2 ROYAL PALACE 111-2)

CLASS 2 DUROC BOARS

- 1st: Ken Bauer and Heidi Benner, MD, 6-1 (RWG3 QUAKE 55-5)
- 2nd: Jon Harrison, MD, 2-3 (SMIB2 ROLLING ROCK 4-1)
- 3rd: Jason Ewart, PA, 4-8 (RWG3 ACCELERATOR 86-1)

CLASS 1 DUROC GILTS

- 1st: Ken Bauer and Heidi Benner, MD, 9-9 (TYAG2 OFF LABEL 1-1)
- 2nd: Ken Bauer and Heidi Benner, MD, 3-5 (RWG9 DOUBLE SHIFT 169-1)
- 3rd: Lance and Mitchell Westcamp, OH, 6-9 (HD2 DEFREEZE 50-3)

CLASS 2 DUROC GILTS

- 1st: Ken Bauer and Heidi Benner, MD, 16-4 (SDF3 LIGHT 'EM UP 3-2)
- 2nd: Jon Harrison, MD, 1-5 (SMIB2 ROLLING ROCK 4-1)
- 3rd: Layla Pence, WV, 7-3 (BEYE0 INTEGRITY 19-3)

CLASS 3 DUROC GILTS

- 1st: Lance and Mitchell Westcamp, OH, 20-9 (RMAY3 BUGATTI 2-2)
- 2nd: Calvin Lazarus, PA, 11-4 (ACGF2 FLASH DRIVE 12-4)
- 3rd: Calvin Lazarus, PA, 11-3 (ACGF2 FLASH DRIVE 12-4)

CLASS 1 HAMPSHIRE BOARS

- 1st: Ken Bauer and Heidi Benner, MD, 7-1 (JKK2 POWER POINT 33-1)

- 2nd: Dave Holloway, PA, 13-2 (JM2 JACK KNIFE 3-5)

- 3rd: Ron Sands, PA, 1-3 (GMW2 SPEECHLESS 14-6)

CLASS 2 HAMPSHIRE BOARS

- 1st: Brad Jaeger, MO, 10-3 (BOLN1 POINT MAKER 118-3)

CLASS 1 HAMPSHIRE GILTS

- 1st: Sarah Nesbitt, PA, 8-5 (CFLK3 NO DEBATE 14-5)
- 2nd: Ken Bauer and Heidi Benner, MD, 3-1 (WMFS2 LVS CONSENSUS 85-8)
- 3rd: Ken Bauer and Heidi Benner, MD, 5-4 (JKK2 POWER POINT 33-1)

CLASS 2 HAMPSHIRE GILTS

- 1st: Jon Harrison, MD, 1-1 (JM2 JACK KNIFE 3-5)
- 2nd: Donielle and Gaige Axline, MD, 1-1 (BEB2 CALL ME MAYBE 1-4)
- 3rd: Ken Bauer and Heidi Benner, MD, 2-2 (JNNW0 UNREAL 2-2)

CLASS 3 HAMPSHIRE GILTS

- 1st: Ken Bauer and Heidi Benner, MD, 13-2 (JKK2 POWER POINT 33-1)
- 2nd: Brad Jaeger, MO, 10-1 (BOLN3 POINT MAKER 118-3)
- 3rd: Justine Bennecoff, PA, 46-8 (BSH2 LTC 1-4)

CLASS 4 HAMPSHIRE GILTS

- 1st: Justine Bennecoff, PA, 46-7 (BSH2 LTC 1-4)
- 2nd: John Strawbridge, PA, 13-2 (JCSY0 MERIT BADGE 27-6)
- 3rd: Justine Bennecoff, PA, 46-8 (BSH2 LTC 1-4)

CLASS 1 LANDRACE BOARS

- 1st: Lance and Mitchell Westcamp, OH, 21-1 (WCMP3 BULL 8-2)

CLASS 1 LANDRACE GILTS

- 1st: Ken Bauer and Heidi Benner, MD, 4-5 (KORB2 REVOLUTION 12-1)

CLASS 2 LANDRACE GILTS

- 1st: Lance and Mitchell Westcamp, OH, 13-6 (WCMP2 BULL 8-2)
- 2nd: Grant Lazarus, PA, 2-1 (KYIK3 PSSS BLADE RUNNER 6-7)
- 3rd: Grant Lazarus, PA, 2-2 (KYIK3 PSSS BLADE RUNNER 6-7)

CLASS 1 YORKSHIRE BOARS

- 1st: Ella Jordan, MD, 6-2 (8HS2 LVS TROPHY 16-1)
- 2nd: Rachel Nesbitt, PA, 6-6 (RIY2 BEST YET 74-12)
- 3rd: Sarah Nesbitt, PA, 6-10 (RIY2 BEST YET 74-12)

CLASS 1 YORKSHIRE GILTS

- 1st: Colby Hough, MD, 3-6 (TBROO WOW 53-4)
- 2nd: Catherine Largent, WV, 12-7 (JRS2 SUNSET 2 24-4)
- 3rd: Mike Flohr, MD, 2-1 (SDF3 NITRO 39-4)

CLASS 2 YORKSHIRE GILTS

- 1st: Sarah Nesbitt, PA, 6-4 (RIY2 BEST YET 74-12)
- 2nd: Ella Jordan, MD, 6-6 (8HS2 LVS TROPHY 16-1)
- 3rd: Drew Kraji, PA, 10-8 (KAKD3 DOC OF AGES 7-2)

CLASS 3 YORKSHIRE GILTS

- 1st: Paul Inskeep, MD, 5-10 (RWG0 NET WORTH 233-1)

CLASS 4 YORKSHIRE GILTS

- 1st: Calvin Lazarus, PA, 14-2 (CLL2 38 SPECIAL 4-4)
- 2nd: Calvin Lazarus, PA, 14-2 (CLL0 BELGIAN 15-6)

SHOWS

2014 State Fair of Texas

Dallas, Texas • Sept. 27-28

BARROW JUDGE: Kade Hummel, III. GILT JUDGE: Brandon Yantis, III.



Grand Champion Overall Market Barrow & Champion Hampshire Barrow
Shown by Kutter Meador



Res. Grand Champion Overall Market Hog & Champion Yorkshire Barrow
Shown by Payton Harrel



Champion Duroc Barrow
Shown by Gavin Giebel



Res. Champion Duroc Barrow
Shown by Rowdy Henson



Res. Champion Hampshire Barrow
Shown by Zach May



Res. Champion Yorkshire Barrow
Shown by Claire McCormick



Grand Champion Overall Gilt & Champion Chester White
Shown by Libby Rogers



Res. Grand Champion Overall Gilt & Champion Yorkshire
Shown by Payton Evans



Champion Duroc Gilt
Shown by Maticen Kingfisher



Res. Champion Duroc Gilt
Shown by Ashlee Daniels



Champion Hampshire Gilt
Shown by Parker Ralston



Res. Champion Hampshire Gilt
Shown by Caleb Walker



Champion Landrace Gilt
Shown by Tye Thompson



Res. Champion Landrace Gilt
Shown by Jodi Toler



Res. Champion Yorkshire Gilt
Shown by Peyton Hill

any closer and you'd be

RINGSIDE



DON'T MISS ONE ISSUE!

Seedstock *EDGE* is the premier publication of the purebred swine industry.

Subscribe or renew online at
NATIONALSWINE.COM!

- | | |
|---|--|
| <input type="checkbox"/> New subscription | <input type="checkbox"/> \$25 One Year (U.S.) |
| <input type="checkbox"/> Renewal | <input type="checkbox"/> \$60 One Year First Class (U.S.) |
| | <input type="checkbox"/> \$60 Three Years (U.S.) |
| | <input type="checkbox"/> \$150 One Year (Foreign & Canada) |

Please allow 8-10 weeks for the first issue.

Farm Name _____ Owner Name _____

Address _____ City/State/Zip _____

Country _____ Phone () _____ E-mail _____

(check one) **VISA** **MasterCard** **DISCOVER**

Card No. _____ Exp. Date _____

Security code (on back of card) _____



Return with payment to:
Seedstock *EDGE* • 2639 Yeager Road • West Lafayette, IN 47906
765.463.3594 • www.nationalswine.com

Great Genetics for GREAT YOUTH

Designed by
Seedstock
EDGE



2 GREAT PROSPECTS SELL IN DUNCAN!

To support the National Junior Swine Association two breeders from the United Duroc Swine Registry will donate a Duroc prospect to sell at the NSR Fall Classic. All proceeds benefit NJSA.



CLASS-WINNING DUROC GILT,
'14 NSR Summer Type Conference
Raised by Nelson Brothers



CHAMPION MIDDLEWEIGHT BARROW
'13 San Antonio Stock Show
Raised by Range Hog Farm

Thank you to Nelson Brothers and Bill Range for their donations and support of the National Junior Swine Association.



Ron: 605.267.2741
Heath: 605.202.0495

Wakonda, SD

RANGE HOG FARM

Bill Range: 618.973.1070

Waterloo, IL

SCHEDULE

Shows and Events



Show Schedule

SHOW	WHERE	WHEN	ENTRY DEADLINE
National Western Stock Show	Denver, Colo.	Jan. 19-21, 2015	CLOSED
NJSa Southeast Regional	Perry, Ga.	Jan. 28-Feb. 1, 2015	Dec. 11, 2014
NSR Winter Type Conference	Perry, Ga.	Jan. 28-31, 2015	Dec. 11, 2014
NSR Southwest Type Conference	Belton, Texas	Feb. 25-28, 2015	Jan. 23, 2015
NJSa Western Regional	Turlock, Calif.	March 5-8, 2015	Feb. 4, 2015
NJSa Nat'l Youth Leadership Conf.	Fort Collins, Colo.	April 10-12, 2015	March 12, 2015
NSR Weanling Extravaganza	Richmond, Ind.	April 21-22, 2015	March 25, 2015
World Pork Expo	Des Moines, Iowa	June 1-6, 2015	April 15, 2015
WPX Junior National	Des Moines, Iowa	June 1-6, 2015	April 15, 2015
NSR Summer Type Conference	Louisville, Ky.	June 29-July 4, 2015	May 13, 2015
National Junior Summer Spectacular	Louisville, Ky.	June 29-July 4, 2015	May 13, 2015
NJSa Southwest Regional	Chickasha, Okla.	Aug. 28-30, 2015	Aug. 4, 2015
National Barrow Show®	Austin, Minn.	Sept. 12-16, 2015	Aug. 14, 2015
NBS® Junior Barrow Classic	Austin, Minn.	Sept. 12-16, 2015	Aug. 14, 2015
Ak-Sar-Ben	Omaha, Neb.	Sept. 24-27, 2015	TBA
NJSa Eastern Regional	Hamburg, N.Y.	Oct. 8-10, 2015	Sept. 10, 2015
American Royal	Kansas City, Mo.	Oct. 24-26, 2015	Oct. 1, 2015
NAILE	Louisville, Ky.	Nov. 7-10, 2015	TBA
NSR Fall Classic	Duncan, Okla.	Nov. 18-21, 2015	Oct. 7, 2015
NJSa Regional Leadership Conf.	Manhattan, Kan.	Dec. 6, 2014	CLOSED
Arizona National	Phoenix, Ariz.	Dec. 27-31, 2014	CLOSED

SCHEDULE

Enter online at nationalswine.com

NSR Fall Classic

Nov. 19-22, 2014

Stephens County Fairgrounds • Duncan, Okla.



ENTRIES FARROWED: On or after April 1, 2014

SCHEDULE OF EVENTS:

Wednesday, Nov. 19

8 a.m.: Earliest entries may arrive

Thursday, Nov. 20

9 a.m.: All entries must be in the barn

9 a.m.: Scanning of open show boars

11 a.m.: All weanling entries must be checked in

5 p.m.: Weanling Pig Sift

Friday, Nov. 21

South Arena

7:30 a.m.: Yorkshire Show followed by Hampshire, Duroc and Crossbred Boar

Main Arena (Ring B)

8 a.m.: Berkshire Show followed by Chester White, Poland and Spot

5:30 p.m.: Selection of the champion Weanling Pig Prospects (Ring A)

Fabulous Female Sale to follow

6:45 p.m.: Male Weanling Pig Sale (Ring B)

Open Show Judges:

Duroc: Jay Winter, Texas

Yorkshire: Larry Moore, Okla.

Hampshire: Will Winter, Texas

Crossbred Boar: Mike Fischer, Texas

Weanling Sift Judges:

Purebreds: Mickey Bellamy, Okla.

Crossbreds: Willie Kirkpatrick, Okla.

Saturday, Nov. 22

Main Arena (Ring A)

9 a.m.: Yorkshire Sale followed by Hampshire, Duroc and Crossbred Boar

Main Arena (Ring B)

9:30 a.m.: Berkshire Sale followed by Chester White, Poland and Spot

NSR REPRESENTATIVES:

Brian Arnold 765.427.1186 • arnold@nationalswine.com

Michael Lackey 765.427.3733 • michael@nationalswine.com

Brian Anderson 620.515.3348 • brian@nationalswine.com

Blaine Evans 765.490.3731 • blaine@nationalswine.com

Arizona National

Dec. 27-31, 2014 www.anls.org

Arizona State Fairgrounds • Phoenix, Ariz.



ENTRIES FARROWED: On or after May 1, 2014

SCHEDULE OF EVENTS:

Saturday, Dec. 27

6 a.m.: Barns open

7-11 a.m.: Scales available for swine

10 a.m.: Junior swine check-in deadline

10:30 a.m.: Junior swine orientation

11 a.m.: Junior barrow weigh cards and registration papers due

12 p.m.: Breeding gilt registration paper check and crossbred gilt weigh cards deadline

5 p.m.: Swine Showmanship

JUDGE:

Jason Hirschfeld, Neb.

Sunday, Dec. 28

9 a.m.: Pedigree and Crossbred Gilt Show

1:30 p.m.: Pedigree and Crossbred Barrow Show

Monday, Dec. 29

2 p.m.: Breeding Swine Sale

Tuesday, Dec. 30

2 p.m.: Junior Market Auction

6 p.m.: All livestock released

MORE INFORMATION: 765.463.3594

Kaley Bontrager ext. 109 • kaley@nationalswine.com

Ellen Olson ext. 101 • ellen@nationalswine.com

Enter online at nationalswine.com

NSR Winter Type Conference

Jan. 28-31, 2015

Georgia National Fairgrounds & Agricenter • Perry, Ga.



Held in conjunction with the NJSA Southeast Regional

ENTRIES DUE: Dec. 11, 2014

ENTRIES FARROWED: On or after June 1, 2014

JUDGES:

Duroc: Ron Nelson, S.D.

Hampshire: Brian Down, Ill.

Landrace: Kent Bennington, Ind.

Yorkshire: Kent Bennington, Ind.

Crossbred: Kevin Wendt, Ohio

NJSA Southeast Regional

Jan. 28-Feb. 1, 2015

Georgia National Fairgrounds & Agricenter • Perry, Ga.



ENTRIES DUE: Dec. 11, 2014

ENTRIES FARROWED: On or after June 1, 2014

OWNERSHIP DEADLINE: Dec. 1, 2014

JUDGES:

Barrows: Kent Bennington, Ind.

Gilts: Brandon Yantis, Ill.

Showmanship: Brian Down, Ill.

SCHEDULE OF EVENTS:

Wednesday, Jan. 28

6 p.m.: Earliest entries may arrive

Thursday, Jan. 29

8 a.m.-2 p.m.: Junior and Open Show
Registration – Show Arena

12 p.m.: All junior entries must be in place

12 p.m.-1:30 p.m.: Youth PQA Plus Training – Show Arena

1:30-3:30 p.m.: Adult PQA Plus Training – Show Arena

1:30 p.m.: Junior Crossbred gilt weight cards
due – Open Show Office (Lower Barn)

3:30 p.m.: Exhibitor Meeting – Show Arena

4 p.m.: Showmanship Preliminaries
(Senior, Intermediate, Junior, Novice) – Show Arena

Friday, Jan. 30

7:30 a.m.: Showmanship Finals
(Senior, Intermediate, Junior, Novice) – Show Arena

Following Showmanship Finals: Junior: Purebred Gilt Show
(Duroc, Hampshire, Landrace, Yorkshire) – Show Arena

***Junior Crossbred Gilt Show will immediately follow the
Junior Purebred Gilt Show – Show Arena*

***MVP (Mentoring Values People) Activity will immediately follow
the Junior Crossbred Gilt Show – McGill Building*

9 a.m.-3 p.m.: Open Show Registration –
Open Show Office (Lower Barn)

10 a.m.-1 p.m.: Open crossbred boar weigh-in – Lower Barn

10 a.m.: All open entries must be in place

12 p.m.: Open crossbred gilts, crossbred and purebred barrow
weight cards due – Open Show Office (Lower Barn)

Saturday, Jan. 31

7:30 a.m.: Winter Type Conference Open Show:
Duroc show followed by Hampshire, Landrace,
Yorkshire and Crossbred – Show Arena

9:30 a.m.: Skillathon Facilitator Meeting – McGill Building

10 a.m.-1 p.m.: Skillathon – McGill Building

1-1:30 p.m.: Skillathon Review – McGill Building

Following Open Show: Junior Crossbred
Barrow Show – Show Arena

5 p.m.: Family Pizza Party (Free to all exhibitors
and their families) – McGill Building

6 p.m.: Duroc Open Sale followed by Hampshire,
Landrace, Yorkshire and Crossbred – Show Arena

6:30 p.m.: Corn Toss Tournament Registration (Youth
and adults welcome) – McGill Building

7 p.m.: Corn Toss Tournament (Youth and
adults welcome) – McGill Building

Sunday, Feb. 1

7 a.m.: Family Breakfast (Free to all exhibitors
and their families) – Show Arena

7:30-8:15 a.m.: Inspirational Service with
Ray Perryman – Show Arena

8:30 a.m.: Junior Purebred Barrow Show (Duroc,
Hampshire, Landrace, Yorkshire) – Show Arena

12 p.m.: Silent Auction Closed

***Awards Ceremony (Skillathon & Sweepstakes Awards) will immediately
follow the Junior Purebred Barrow Show – Show Arena*

***All Southeast Regional hogs are released after the Awards Ceremony*

NSR REPRESENTATIVES:

Brian Arnold 765.427.1186 • arnold@nationalswine.com

Michael Lackey 765.427.3733 • michael@nationalswine.com

Brian Anderson 620.515.3348 • brian@nationalswine.com

Blaine Evans 765.490.3731 • blaine@nationalswine.com

MORE NJSA INFORMATION: 765.463.3594

Kaley Bontrager ext. 109 • kaley@nationalswine.com

Ellen Olson ext. 101 • ellen@nationalswine.com

SCHEDULE

Enter online at nationalswine.com

NSR Southwest Type Conference

Feb. 25-28, 2015

Bell County Expo Center • Belton, Texas

SHOW: Friday, Feb. 27

SALE: Saturday, Feb. 28



- The NSR shows include purebred Duroc, Hampshire, Landrace, Yorkshire boar and gilt and crossbred boar genetics.
- Berkshires, Chester Whites, Polands, Spots boar and gilt and crossbred gilts will also be exhibited.

ENTRIES DUE: Jan. 23, 2015

ENTRIES FARROWED: On or after July 1, 2014

JUDGES:				
Duroc	Hampshire	Landrace	Yorkshire	Crossbred
Mark Hoge, Ill.	Seth Swenson, Ill.	Seth Swenson, Ill.	Steve Cobb, Ark.	Rick Whitman, Texas

SCHEDULE OF EVENTS:

Wednesday, Feb. 25

12 p.m.: Earliest hogs may arrive

Thursday, Feb. 26

9 a.m.: Check-in begins and scanning

10 a.m.: All hogs must be in barn

HOTELS:

Holiday Inn | 254.778.5511

5247 S. General Bruce Dr. | Temple, TX 76502

La Quinta Inn & Suites | 254.939.2772

229 W. Loop 121 | Belton, TX 76513

Quality Inn Temple | 254.770.1100

1610 W. Nugent Ave. | Temple, TX 76504

River Forest Inn | 877.501.0782

1414 East 6th Avenue | Belton, TX 76513

Friday, Feb. 27

7:30 a.m.: Yorkshire show followed by the Landrace, Hampshire, Duroc boar and gilt and crossbred boar shows

Saturday, Feb. 28

9 a.m.: Yorkshire sale followed by the Landrace, Hampshire, Duroc boar and gilt and crossbred boar sales

NSR REPRESENTATIVES:

Brian Arnold 765.427.1186 • arnold@nationalswine.com

Michael Lackey 765.427.3733 • michael@nationalswine.com

Brian Anderson 620.515.3348 • brian@nationalswine.com

Blaine Evans 765.490.3731 • blaine@nationalswine.com



CHAMPION DUROC BOAR
Chad Hill Durocs, Texas



CHAMPION DUROC GILT
Claire Porter, Texas



CHAMPION HAMPSHIRE BOAR
George & Mike Watson, Ind.



CHAMPION HAMPSHIRE GILT
Kinley Meadors & Peter Farms, Texas



CHAMPION LANDRACE BOAR
Korb Farms, Inc., Ohio



CHAMPION LANDRACE GILT
Elm Farms, Mo.



CHAMPION YORKSHIRE BOAR
Grimm Purebreds, Iowa



CHAMPION CROSSBRED BOAR
Engnell Brothers, Ill.



CHAMPION YORKSHIRE GILT
Dustin Ham, Texas

See the full schedule on page 51.



For more information, call 765.463.3594 or visit nationalswine.com

NATIONAL SWINE REGISTRY



Jan. 28-31, 2015

Georgia National Fairgrounds & Agricenter
Perry, Ga.

ENTRY DEADLINE: Dec. 11, 2014

Farrowing Deadline: June 1 and after

Featuring Duroc, Hampshire, Landrace,
Yorkshire and Crossbred boars and gilts

Held in conjunction with the NJSA Southeast Regional.

See the full schedule on page 51.



For more information, call 765.463.3594 or visit nationalswine.com



Held in conjunction with the NSR Winter Type Conference

NJSA Southeast Regional

Junior Breeding Gilt & Market Barrow Shows

Jan. 28-Feb. 1, 2015

Georgia National Fairgrounds • Perry, Ga.

ENTRY DEADLINE: Dec. 11, 2014

Ownership Deadline: Dec. 1, 2014 • **Farrowing Dates:** June 1 or after

Champion Purebred Gilt Overall: One-Year Exiss Trailer Lease**

Champion Purebred Barrow Overall: \$750*

Reserve Champion Purebred Gilt & Barrow Overall: \$500*

Champion Breed & Crossbred Gilts & Barrows: \$250*

Reserve Champion Breed & Crossbred Gilts & Barrows: \$100*

Champion Breed Bred-and-Owned Gilts: \$250

Reserve Champion Breed Bred-and-Owned Gilts: \$100

*A minimum of 100 purebred barrows must be exhibited in order for the Champion and Reserve Champion to receive full premiums. Only half of the listed premiums will be awarded, if less than 100 are shown.
**Lease with the option to buy.

See the full schedule on page 52.



For more information, call 765.463.3594 or visit nationalswine.com

NATIONAL SWINE REGISTRY



EIGHT BREEDS. ONE SHOW.

Feb. 25-28, 2015

Bell County Expo Center • Belton, Texas

ENTRY DEADLINE: Jan. 23, 2015

Farrowing Deadline: July 1 and after

NSR Shows will include purebred Duroc, Hampshire, Landrace, Yorkshire and Crossbred boars and gilts.



For more information, call 765.463.3594 or visit nationalswine.com



NJSa Western Regional

Junior Breeding Gilt & Market Barrow Shows

March 5-8, 2015

Stanislaus County Fairgrounds • Turlock, Calif.

ENTRY DEADLINE: Feb. 4, 2015

Ownership Deadline: Jan. 6, 2015 • **Farrowing Dates:** Aug. 1 or after

- Champion Purebred Gilt Overall: One-Year Exiss Trailer Lease****
- Champion Purebred Barrow Overall: \$750***
- Reserve Champion Purebred Gilt & Barrow Overall: \$500***
- Champion Breed & Crossbred Gilts & Barrows: \$250***
- Reserve Champion Breed & Crossbred Gilts & Barrows: \$100***
- Champion Breed Bred-and-Owned Gilts: \$250**
- Reserve Champion Breed Bred-and-Owned Gilts: \$100**

*A minimum of 100 purebred barrows must be exhibited in order for the Champion and Reserve Champion to receive full premiums. Only half of the listed premiums will be awarded, if less than 100 are shown.
**Lease with the option to buy.

PENNSYLVANIA FARM SHOW



EIGHT-BREED BRED GILT SALE

Bred Gilt Show: Friday, Jan. 9, 10 a.m.

Sale: Saturday, Jan. 10, 9 a.m.

Supreme Champion will be chosen on Jan. 10 at 8:15 a.m.

Bred Gilt Sale will be held promptly at 9 a.m.

Farm Show Complex • Harrisburg, Pa.

All gilts will have a pedigree. Terms are cash, check or credit card with a bank letter for non-registered buyers.

Auctioneer: Harry Bachman, Pa. • 717.821.1638

NSR Rep.: Blaine Evans • 765.490.3731

CPS Rep.: Jack Wall • 309.945.3312

Farm Show Complex • 717.787.2905



**Supreme Champion
& Champion Berkshire Gilt,
2014 Pennsylvania Farm Show
Shown by Dave Holloway, Pa.**

***180 bred gilts bred for pure
and crossbred litters.***

Show order:

**Berk, Chester, Duroc, Hamp,
Landrace, Poland, Spot, York**

Sale order:

**Duroc, Berk, Landrace, Spot,
Hamp, Poland, Chester, York**

For more information, contact
Harry Bachman, Blaine Evans or
Rodger Bankert (717.632.4722).

Designed by
**SEEDSTOCK
EDGE**



Dan E. Baker
AUCTIONEER



765.583.2466
7714 W 500 N
West Lafayette, IN 47906

MIKE BERGER
Auctioneer
Since 1986




574.850.5605
408 King Rd.
Bremen, IN 46506

www.bergerauctioneering.net

Clayton
Agri-Marketing, Inc.
Exporter of quality swine genetics




Tony Clayton
Auctioneer

2507 Industrial Drive
Jefferson City, MO 65109
573.659.8560
Fax: 573.659.8548

E-mail: tony@claytonagri-mktg.com
www.claytonagri-mktg.com

AUCTIONEER



Let Your Next Sale
Be Your Best One!



Al Conover

P.O. Box 9 • Baxter, IA 50028
Office: 641.227.3537 • Cell: 515.491.8078
Home: 641.227.3686 • conover@conoverauction.com



CHAD DAY
AUCTIONEER



6872 N. STATE ROAD 19
KOKOMO, IN 46902

260.388.2876

Ron Kreis
AUCTIONEER
740.796.5242
ADAMSVILLE, OHIO

2005 WORLD CHAMPION



800.282.0428

Check out all of our
showpig sires at
www.showpigs.com!

PRAIRIE STATE SEMEN INC.
968 Co. Rd. 1000 N. • Champaign, IL 61822

The
SHOWBOX

OFFICIAL PUBLICATION OF THE
TEXAS CLUB CALF ASSOCIATION TEXAS CLUB PIG ASSOCIATION
TEXAS CLUB LAMB ASSOCIATION TEXAS CLUB MEAT GOAT ASSOCIATION
GEORGIA CLUB CALF PRODUCERS ASSOCIATION

The Showbox Magazine

No matter what your business or
what you are promoting,
The Showbox reaches the people who are
purchasing your products.

We don't just sell advertising –
we help create new customers.

www.theshowbox.com

1512F Loop 304
Crockett, Texas 75835

936-544-2787
936-544-3549 fax

Ccarrabba@aol.com
Cell 713-416-2314

Scooter@theshowbox.com
Cell 281-797-5842

Karenh@theshowbox.com
Cell 936-222-6779

Linnebur *INC.*
Auctions

- Livestock
- Antiques
- Farm Equipment
- Estate Dispersals

Serving the auction industry for over 25 years!

Steve Linnebur Stephen Linnebur
Byers, Colo. Flora, Ind.
303.822.9298 765.202.3703

www.linneburauctions.com



David Mullins
Licensed Auctioneer Danville, Ind.

317.503.2798
www.dmauctioneer.com

Naughton Auction Service



Mark It Sold!
Machinery, Livestock, Household.
For all your sale day needs.

Dan Naughton
Auctioneer/Ringman
217.648.2356 | 217.304.6502 cell
Atlanta, IL

Howard Parrish
419.553.6042




Contact me for open dates.

05140 Co. Rd. J
Edon, OH 43518

419.566.1599
OFFICE: 121 Jackson Street • Plain City, OH 43064




*Livestock
Real Estate
Farm Equipment*

Kevin Wendt
Auctioneer

www.thewendtgroup.com

WILLIAMS



40 years of trusted livestock sales

Mike Williams • Auctioneer
18130 Brush Creek Road
Higginsville, MO 64037
816.797.5450
mwauctions@ctcis.net

Since 1980



Purple Circle
AMERICA'S YOUTH LIVESTOCK MAGAZINE

806.499.3749 • 806.499.3759 fax
14200 FM 1062 - Canyon, Texas 79015
www.purplecircle.com • purplecircle@midplains.coop

America's Premier Youth Livestock Magazine since 1980 serving the Youth and those involved with the Junior Livestock Show Industry. With no added costs we'll advertise your cattle, goats, hogs, lambs, show supplies, feed or trailers - whatever you have to sell we'll get the word out to bring in the buyers. Besides our magazine we can also put together your brochures.

Give us a call for all your advertising needs
806.499.3749.

24 hours a day / 7 days a week -
365 days a year since 1980 -
on the internet and in our publication.

Nationwide with subscribers in 45 states,
Canada and Mexico.
Free distribution to all major livestock shows, numerous state fairs and dozens of jackpots and sales.

Because you want to spend your hard earned advertising dollars with the BEST! *It's a smart move to advertise with the Purple Circle - we get the job done for the best prices!* The Purple Circle serves as a showcase, a public arena, from which people from coast to coast can promote their livestock and products and to acknowledge 4-H and FFA exhibitors from other areas of the Country.

You'll also keep up to date with the latest trends and find what you are looking for by subscribing to Purple Circle.

Who

What

When

Where

Why

Farm & Ranch Connection



Your Premier Source For Equipment, Livestock & Renewable Energy Needs.

Connecting you to the buyers

The Farm & Ranch Connection offers extensive coverage of the latest developments in agriculture. The Farm & Ranch Connection is a productive communication platform. It's not just a magazine, it also serves as an effective interface bringing together the professionals, industry experts, consultants and our readers. Our vision is to bring our readers the most innovative, the most exciting and the most informative agricultural experience.

The Farm & Ranch Connection is proudly published by Connection Publications out of Fort Dodge Iowa, since 1992.

800-424-0323 • 515-955-1980
www.fandrc.com • fandrc@frontiernet.net

Reference

Seedstock Source

Your personal access to the best purebred Duroc, Hampshire, Landrace and Yorkshire genetics in the United States.

ARKANSAS

FLYING J SHOW HOGS
Heath Jones
20909 Summers Mtn. Rd.
Lincoln 72744
Phone: 479.824.5837
(Durocs, Yorks)

CALIFORNIA

BAR-ONE FARMS
Wes Barone
6093 W. Mountain View Ave.
Caruthers 93609
Phone: 408.981.4881
(Durocs, Hamps, Yorks)

BEN TERRY
3540 Stony Point Rd.
Santa Rosa 95407
Phone: 707.584.5374
(Durocs, Crossbreds)

BOYTOR SWINE FARM
14811 Chandler St.
Corona 92880
Phone: 951.314.8876
(Hamps, Yorks)

CALIFORNIA STATE
UNIVERSITY, CHICO
Don Sinnott, Swine Technician
Phone: 530.898.6025
Email: dsinnott@csuchico.net
Clay Carlson, Faculty
Phone: 530.898.6694
Email: ccarlson2@csuchico.edu
(Yorks)

CY A. HAWKINS
2299 Zumwalt Rd.
P.O. Box 1326
Williams 95987
Phone: 530.473.2264
(Hamps, Yorks, Crossbreds)

DAY'S SWINE FARM
Tony Day
20758 Road 212
Lindsay 93247
Phone: 559.909.2369
(Durocs, Hamps, Yorks, AOB)

DONALD NAVES & FAMILY
Donald & Michelle Naves
3922 Sycamore Lane
Pleasant Grove 95668
Phone: 916.799.5259
(Hamps, Yorks)

GOLDEN STATE GENETICS
Rachelle, John & June Bailey
445 S. Blaker Rd.
Turlock 95380
Phone: 209.656.9550
(Durocs, Hamps, Landrace, Yorks)

JUBE'S HAMPSHIRE
Jube Begley
815 Scenic Ave.
Santa Rosa 95407
Phone: 707.585.0538
(Hamps, Yorks)

KPAP
Kody Petrucci
70 Aloha Ct.
Petaluma, CA 94952
Phone: 707.765.2581
(Durocs, Spots, Yorks)

LOIN EYE FARMS
Paul J. Fernandes Jr.
1365 Tawny Lane
Turlock 95380
Phone: 209.664.0309
Fax: 209.664.0309
(Hamps, Yorks)

MARIO & MICHELE BUONI
10400 Old River Rd.
Bakersfield 93311-9734
Phone: 661.397.8940
(Durocs, Hamps, Yorks)

MARK & SANDY OTTENWALTER
2260 Lurline Ave.
Colusa 95932
Phone: 530.458.5700
(Hamps, Yorks)

MODESTO JR. COLLEGE
John Mendes
435 College Ave.
Modesto 95350
Phone: 209.575.6205
Fax: 209.575.6199
(Durocs, Hamps, Yorks)

MOENCH FARMS
Wilbert & Dennis Moench
24701 Ave. 106
Terra Bella 93270-9716
Phone: 559.535.4347
Fax: 559.535.4347
(Durocs, Hamps, Yorks)

MURPHY FARM
Cameron & Andrew Murphy
P.O. Box 105
Bodega 94922
Phone: 707.876.3364
Cell: 707.953.6174
(Hamps, Yorks)

NO LIMIT GENETICS
Adam Mendoza &
Becky Garner
2500 S. Walton Ave.
Yuba City 95993-9704
Phone: 530.844.2932
Cell: 209.602.6106
(Durocs, Hamps, Yorks)

PANERO FARMS
Rhys & Jeanine Panero
11935 S. Van Allen Rd.
Escalon 95320
Phone: 209.838.7570
Rhys: 209.604.7594
Email: panerofarms@yahoo.com
(Yorks)

POWERHOUSE FARMS
Nathan & Kim Copp
2129 S. 10th St.
Los Banos 93635
Phone: 209.827.0460
Cell: 559.280.0119
(Durocs, Hamps, Landrace, Yorks)

REEDLEY COLLEGE
David Lopes
995 N. Reed Ave.
Reedley 93654
Phone: 559.638.0319
(Durocs, Yorks)

RIVER VIEW GENETICS
Tom Millar Jr.
8209 Co. Rd. 29
Glenn 95943
Phone: 530.934.0220
(Durocs, Hamps, Yorks)

SMALL TOWN GENETICS
James & Kara Backman
2812 N. Hickman Rd.
Denair 95316
Phone: 209.620.4106
(Durocs, Hamps, Yorks)

FLORIDA

CLYATT SHOWPIGS
Ken, Lisa & Kayden Clyatt
8882 NW 39th Place
Lake Butler 32054
Phone: 386.752.8214
(Yorks, Crossbreds)

D & D SWINE
Dale Gavin, Don Gavin,
Doug Naylor
11715 E. Robin Lane
Floral City, FL 34436
Phone: 352.423.3042
Cell: 352.476.8384
Cell: 352.302.5565
(Yorks, Crossbreds)

HOLT SHOWPIGS
Dennis & Darren Holt
17402 SW 67 Ave
Archer 32618
Phone: 352.495.2760
Cell: 352.538.5363
Email: holtshowpigs@gmail.com
(Hamps, Yorks, Crossbreds)

MIKE WILLIAMS SHOWPIGS
Mike, Beth & Bud Williams
3816 NW 216th St.
Lawttee 32058
Phone: 904.710.9259
(Hamps, Yorks, Crossbreds)

GEORGIA

PAT & BONNIE THRIFT & SON
Rt. 3, Box 1400
Folkston 31537
Phone: 912.496.2131
Fax: 912.496.2131
(Hamps, Yorks)

ILLINOIS

A&W GENETICS
Ade DeSollar/Ty Olson
1117 Lafayette St.
Beardstown 62618
Phone: 217.323.5269
(Durocs, Yorks)

ARMSTRONG GENETICS
JR & Ali Armstrong
Rt. 1, Box 57
Huntsville 62344
Phone: 217.667.2117
Cell: 217.440.7768
(Hamps, Yorks, Chesters, Spots)

BEHRMANN HOG FARM
Scott, Cliff & Tyler Behrmann
303 E. St. Rt. 161
Albers 62215
Plant: 618.248.5151
Farm: 618.228.7073
(Durocs, Hamps, Landrace, Yorks)

BOWEN HAMS & YORKS
Brent & Kelly Bowen
16525 N. 900 E. Rd.
Bloomington 61704
Cell: 309.208.9058
(Hamps, Yorks)

CEDAR RIDGE FARMS INC.
The Grohmanns
5535 Cedar Ridge Lane
Red Bud 62278
Phone: 618.473.2325
Fax: 618.473.2264
Email: angie@cedargenetics.com
(Durocs, Hamps, Landrace, Yorks)

CENTER PRAIRIE GENETICS
Tom Olson
16250 U.S. Hwy. 6
Princeton 61356
Cell: 815.303.4625
Farm: 815.875.3689
(Durocs, Hamps, Polands, Yorks)

CHET & CLAIRE BRINKMEIER
11100 W. Loren Rd.
Pearl City 61062
Chet: 815.443.2046
(Durocs, Hamps, Yorks)

D&H SHOWPIGS
Dan & Holly Hartmann
21105 Hartmann Rd.
Maple Park 60151
Cell: 815.751.1019
(Hamps, Yorks)

DENNY SHOW PIGS
Alex Denny
345 N. Co. Rd. 3050
Augusta 62311
Phone: 217.392.2442
Cell: 217.248.8789
Email: ardenny1@gmail.com
(Hamps)

DICK & ZACK HOWELL
8775 Little Galilee Rd.
Maroa 61756
Dick: 217.935.8108
Zack: 217.935.6877
(Durocs, Hamps, Yorks)

DOWN FAMILY SHOWPIGS
Brian Down
3848 N. 1600 E. Rd.
Cabery 60919
Phone: 815.949.1667
Cell: 217.823.3943
(Hamps, Yorks)

GLENN SADDORIS
25405 115th Ave. N.
Port Byron 61275
Phone: 309.523.3608
(Hamps)

JOHN & MELISSA LIVERMORE & FAMILY
Rt. 1, Box 23
Media 61460
Phone: 309.924.1936
Cell: 309.221.2411
(Hamps, Yorks)

JORDAN MCGREW
17241 N. 24th Rd.
Good Hope 61438
Phone: 309.772.2694
(Durocs, Hamps, Landrace, Yorks)

KYLE & KASSANDRA KNAUTH
1253 N. 2600 E. Rd.
Milford 60953
Phone: 815.889.4363
(Landrace, Yorks)

LORENZEN FARMS
Tracy Lorenzen
11428 E. 2400 Rd.
Chrisman 61924
Phone: 217.269.2011
(Yorks)

MALONE SHOW PIGS
Roger, Mary Ann & Miranda
2076 Knox Rd. 2250 N.
Victoria 61485
Phone: 309.879.2550
Cell: 309.361.1119
Email: rmalone2@mymctc.net
(Durocs, Yorks, Crossbreds)

MCBRIDE HAMPS
David, Douglas & Nolan
1002 II. Rt. 97
Gilson 61436
David: 309.221.4797
Douglas: 309.221.8295
Nolan: 309.221.0972
(Hamps)

MOORE'S DUROCS
Russell Moore
Rt. 1, Box 109
Ellery 62833
Phone: 618.445.3944
(Durocs)

NORMAN BROS. & SON
Greg & Grant Norman
7234 E. 2700th Rd.
Sidell 61876
Phone: 217.887.2506
Cell: 217.822.2506
(Durocs, Hamps, Yorks)

PETER FARMS
Mark, Dan & Karl Peter
1969 E. 1250th St.
Mendon 62351
Mark: 217.257.1381
Karl: 217.653.3941
Email: peterfarms@live.com
(Durocs, Hamps, Yorks)

RANGE & THEOBOLD
Bill Range
6862 Fountain Oak Lane
Waterloo 62298
Phone: 618.973.1070
(Durocs, Hamps, Yorks, Crossbreds)

SCHULER FAMILY FARMS
Paul Schuler
29801 E. 2600 N. Rd.
Lexington 61753
Phone: 309.365.8738
Cell: 309.275.3973
(Durocs, Landrace, Yorks)

SCOTT & BRYAN BENNETT
13507 N. Rupp Rd.
Martinsville 62442
Phone: 217.382.4772
Cell: 217.251.0466
(Durocs, Hamps, Yorks)

**SILVER CREEK FARMS/
LEADING EDGE SHOWPIGS**
Scott Toenyas, Adam Kimmle &
Brian Diesen
13372 Lee Rd.
Trenton 62293
Phone: 618.779.6989
(Hamps, Yorks)

STOHLQUIST SHOWPIGS
Ryan & Victoria Stohlquist
15825 Beaverton Rd.
Poplar Grove 61065
Phone: 815.569.1035
Cell: 815.509.0846
(Durocs, Yorks)

SWENSON GENETICS
Seth Swenson
13620 Lisbon Rd.
Newark 60541
Phone: 815.736.6097
Cell: 815.405.6279
(Durocs, Hamps, Yorks)

TKF SHOWPIGS
Tom Kurtenbach Family
10708 N. 3200 E. Rd.
Chatsworth, 60921
Tom: 815.674.2406
Andy: 217.257.0685
Tom email: tkffarms9@hughes.net
Andy email: akurtenbach@hughes.net
(Durocs, Hamps, Polands)

WHEWELL'S PROFIT PRODUCERS
Russell Whewell
110 E. Main-Ferris
Carthage 62321
Farm: 217.746.8201
Nick: 319.594.6659
(Durocs, Hamps, Landrace)

ZEHF FARMS
31842 Dutch Lane
Washington 61571
Phone: 309.444.4195
Curt: 309.251.7447
(Durocs)

INDIANA

COUNTRY MARKET FARMS
Stan Rush & Eric Foland Family
703 S. 600 E.
Greentown 46936
Phone: 765.461.9469
Email: ebfoland@yahoo.com
(Durocs, Hamps, Yorks)

DENHART SHOWPIGS
134 E. 800 N. Rd.
Crawfordsville 47933
Randy Denhart: 765.918.4788
Farm: 765.339.4713
Email: denhart@tctc.com

DRAKE PUREBRED FARMS
2736 N. Brick Church Rd.
Cambridge City 47327
Phone: 765.478.4802
(Durocs, Hamps, Landrace, Yorks)

FARRER STOCK FARM
Tom Farrer
6891 W. Co. Rd. 325 N.
Royal Center 46978
Tom: 574.643.9965
Cell: 574.727.0680
(Durocs, Hamps, Yorks)

GEORGE & MIKE WATSON
1886 W. Greencastle Rd.
Mooreville 46158
Farm: 317.539.4968
Mike: 317.996.4055
(Hamps, Crosses)

HARVEY HAMPSHIRE
Don L. Harvey & Sons
15124 Dare Rd.
Brookville 47012
Darrell: 765.732.3504
Dale: 765.732.3470
Don: 765.732.3188
(Hamps)

JAMES S. MCKEE
2162 E. Green Bay Rd.
Attica 47918-8034
Phone: 765.762.6362
(Yorks)

JJ GENETICS
Guy Jackson & Mike Johnson
767 E. 1100 S.
Warren 46792
Guy: 260.375.6235
Mike: 260.375.6351
Fax: 260.375.2420 *51
(Durocs, Hamps)

KENT BRATTAIN & FAMILY
263 Co. Rd. 900 W.
Greencastle 46135
Phone: 765.653.1254
Cell: 765.720.3305
(Durocs, Hamps, Landrace)

KILMER SWINE FARMS
Dave Kilmer
1622 N. 900 E.
Monticello 47960
Phone: 574.943.3239
Jim: 765.412.6325
(Durocs, Hamps, Yorks)

ROBIN RIDGE FARMS
Mike Fagg
1830 St. Rd. 246 W.
Clay City 47841
Phone: 812.939.2534 or
812.249.2851
Fax: 812.939.2534 *51
(Durocs, Hamps, Yorks)

TEMPEL GENETICS
Bill Tempel
14693 N. U.S. 231
Gentryville 47537
Phone: 812.937.2620
Fax: 812.937.2621
(Landrace, Yorks)

TOP-LINE GENETICS
Tom & Jan Disque
8374 N. 100 E.
Seymour 47274
Farm: 812.497.2830
Cell: 812.521.2058
(Durocs, Hamps, Yorks)

WHITESHIRE/HAMROC
Mike Lemmon
1818 E. 600 N.
Albion 46701
Phone: 800.825.2929 or
260.636.7304
Fax: 260.636.3703
(Durocs, Hamps, Landrace, Yorks)

YOUNG & GUARD
Del Guard
8614 W. 750 N.
West Lafayette 47906
Home: 765.583.4657
Tracie Knotts: 765.427.3048
Email: youngandguard@ffni.com
(Hamps, Crossbreds)

IOWA

BOMBEL & SONS SHOWPIGS
Matt Bombei
18824 Zephyr Ave.
Delta 52550
Phone: 641.660.5741
Email: iowashowpigs@gmail.com
(Chesters, Yorks, Crossbreds)

BRINK PREDICTABLE GENETICS
Jerry D. Brink
23098 Gunder Rd.
Elkader 52043
Phone: 563.245.2048 or
563.245.1639
(Durocs, Hamps, Yorks)

CAIN SUPER SIRE
Earl Cain & Family
19760 490th St.
Chariton 50049
Office: 641.774.5397
Earl: 641.203.1391
Dusty: 641.203.2257
Lee: 641.203.4447
Fax: 641.774.5447
(Hamps, Yorks, Durocs, Crossbreds)

DANIEL R. BURZLAFF
2331 185th St.
Delmar 52037
Phone: 563.659.9042
(Hamps, Yorks)

Reference

DCM HAMPS & DUROCS

David Martin
1482 County Home Rd.
Marion 52302
Phone: 319.854.7180
Fax: 319.854.7180
(Durocs, Hamps)

HILLCREST FARMS

Keith Wilson
2730 Oak Ave.
Guthrie Center 50115
Phone: 641.524.5384
Fax: 641.524.5360
(Durocs, Hamps, Landrace, Yorks)

HILLTOP FARMS

Richard Swenson
2210 623rd Ave.
Albia 52531
Phone: 641.932.3676
(Hamps)

HUINKER DUROCS LTD.

John & Ruth Huinker
1854 Middle Calmar Rd.
Decorah 52101
Phone: 563.532.9646
(Durocs)

WAYNE J. HUINKER

2091 Middle Ossian Rd.
Decorah 52101
Phone: 563.382.9814
Cell: 563.380.1372
(Hamps, Yorks)

IVERSON HAMPS & YORKS

Ronald & Marcia Iverson
275 E. 140th St. N.
Grinnell 50112
Phone: 641.236.3713
Cell: 641.990.0875
(Hamps, Yorks)

JAYME & SCOTT SIEREN

1235 210th St.
Keota 52248
Phone: 641.636.2153
(Hamps, Landrace, Yorks)

KERNS FARMS

Steve & Becky Kerns
3354 140th St.
Clearfield 50840
Phone: 641.336.2952
Fax: 641.336.2450
(Durocs, Landrace, Yorks)

MAREK LAND & LIVESTOCK

Timothy & Heather Marek
2659 170th St.
Riverside 52327
Phone: 319.648.4000
Cell: 319.330.5171
(Hamps, Yorks)

WUEBKER FAMILY

SWINE GENETICS
Marvin Wuebker
851 Pleasant St.
Rockwell City 50579
Phone: 712.297.7644
Email: mcwuebker@yahoo.com
(Durocs, Hamps, Yorks)

MOELLER SHOWPIGS CO.

Terry Moeller
1340 Hwy. 218
West Point 52656
Phone: 319.469.6016
(Yorks)

ROHRIG YORKS & SHOWPIGS

Matt Rohrig
2543 305 St.
P.O. Box 155
Orient 50858
Phone: 641.344.8869
(Yorks)

STEWART'S DUROC FARM INC.

Doug Stewart
1750 212th St.
Waverly 50677
Phone: 319.352.1709
Cell: 319.231.0676
(Durocs, Hamps, Yorks)

WALDO FARMS OF IOWA

1889 210th St.
Winterset 50273
Phone: 800.869.0425 or
515.462.1240
(Durocs, Landrace, Yorks)

WINMOR FARMS

Don & Jennifer Slagle
9316 Wickham Dr.
Johnston 50131
Phone: 515.418.0634
Email: info@winmorfarms.com
(Hamps, Yorks)

KANSAS

MESSNER FARMS

1824 Hwy. 75
Caney 67333
Richard Anderson: 620.879.5229
Brett Anderson: 620.870.9070
(Durocs, Hamps, Yorks)

KENTUCKY

GEORGE WATSON

1860 Watson Rd.
Hillsboro 41049
George's Cell: 606.748.1317
(Yorks)

VISTA BROOK FARMS

Dale, Kevin & Tim Ellis
3211 Webster Rd.
Danville 40422
Phone: 859.332.7623
Kevin's Cell: 859.583.0380
(Durocs, Hamps, Landrace, Yorks)

MICHIGAN

WOODEN PUREBRED

SWINE FARM
Dennis Wooden
61607 Crooked Creek Rd.
Cassopolis 49031
Phone: 269.445.8066
Fax: 269.445.3001
(Durocs, Hamps, Yorks)

MINNESOTA

COMPART'S BOAR STORE INC.

Dean, Chris & Jim Compart
40750 441st Ave.
Nicollet 56074
Dean: 507.225.3737
Chris: 507.246.5012
Jim: 507.246.5179
Fax: 507.225.3075
(Durocs, Landrace, Yorks)

COMPART'S PRIMARY SPF

Jim Compart
12126 293rd Ave.
Princeton 55371
Jim: 507.246.5179
Fax: 507.246.5339
(Durocs, Landrace, Yorks)

MISSOURI

BROOKE BROTHERS

Michael & Dave Brooke
13623 CR 120
Braymer 64624-9311
Phone: 660.645.2855
(Durocs, Hamps, Yorks)

FORKNER FARMS/ TRULINE GENETICS

Everett Forkner
9282 E Indian Line Rd.
Richards 64778
Phone: 417.484.3306
Toll-free: 877.489.0570
Fax: 417.484.3317
Email: eforrtl@gmail.com
(Durocs, Hamps, Landrace, Yorks)

HEIMER HAMPSHIRE

Jesse Heimer
555 Birch Lane
Taylor 63471
Jesse's Cell: 217.257.0138
Email: heimerhamps@gmail.com
Web: www.heimerhamps.com
(Hamps, Yorks, Berks)

JOE ROBERTS

6482 E. Farm Rd. 48
Fair Grove 65648
Phone: 417.759.2824
(Durocs, Hamps)

MCCLOUD FARMS INC.

John, Melanie & Katie
McCloud
805 N.W. Hwy. A
Trenton 64683
Phone: 660.485.6468
Email: husker@grm.net
(Durocs, Yorks)

ORAM BROTHERS

36968 E. St. Hwy. 146
Gilman City 64642
Phone: 660.876.5302
(Yorks)

ROBISON GENETICS

Randy & Jimmy Robison
5536 S.W. Simental Rd.
Polo 64671
Phone: 660.354.2480
Randy: 660.354.3202
(Durocs, Hamps)

WOLF BROTHERS

Gregg, David & Adam Wolf
4497 Hwy. W.
Chillicothe 64601
Ron: 660.646.9210
Adam: 573.289.3311
Gregg: 417.388.1348
Email: wolfpigfarm@gmail.com
(Hamps, Yorks, Crossbreds)

NEBRASKA

BAADE GENETICS

Kyle Baade
58135 722 Rd.
Plymouth 68424
Kyle's Cell: 402.293.2229
Fax: 402.228.0306
(Hamps, Yorks)

JOY GENETICS

Sarah & Laura Joy
5130 F Rd.
Dunbar 68346
Phone: 402.873.4406
Office/Kirb: 402.873.6648
Fax: 402.873.6682
(Durocs, Hamps, Yorks)

S&D SHOWPIGS

Scott Dean
74398 342 Ave.
P.O. Box 245
Imperial 69033
Cell: 970.560.6733
Email: s_and_dshowpigs2@yahoo.com
(Berks, Chesters, Durocs, Spots,
Yorks, Crossbreds)

STEVEN FAUSS

P.O. Box 4
Nickerson 68044
Phone: 402.721.8057
(Hamps)

WALDO FARMS INC.

P.O. Box 8
DeWitt 68341
Phone: 800.869.0425
Fax: 402.683.6605
(Durocs, Landrace, Yorks)

NORTH CAROLINA

LOOPER FARMS

Wesley Looper
4695 Petra Mill Rd.
Granite Falls 28630
Phone: 828.396.9102
(Hamps, Landrace, Yorks)

SHARP FARMS

Alan Sharp
5171 Hwy. 581
Sims 27880
Phone: 252.235.3786
Fax: 252.235.4611
(Durocs, Yorks)

OHIO

BOBLENZ GENETICS & GREG EDMONDSTONE

Kevin Boblenz
7620 Agosta-Larve Rd.
New Bloomington 43341
Phone: 740.499.2227
Cell: 740.361.4040
(Durocs, Yorks)

ISLA GRANDE FARMS
Rick L. Fogle
2730 Harding Hwy. W
Marion 43302
Phone: 740.382.1580
Rick's Cell: 740.225.2541
(Durocs, Hamps, Yorks)

PARRISH FARMS
Howard, Frank & Steve Parrish
5140 County Road J
Edon 43518
Phone & Fax: 419.272.2852
Howard: 419.553.6042
(Durocs, Hamps, Yorks)

OKLAHOMA

HOFSCHULTE FAMILY
P.O. Box 263
Wyandotte 74370
Home: 918.542.6410
Phillip: 918.231.8740
Nick: 918.541.7893
Chris: 918.961.1679
Email: phil@hofschultesires.com
(Durocs, Hamps, Yorks, Crossbreds)

LANCASTER HAMPSHIRE
Joe & Georgia Lancaster
17064 Co. Rd. 3500
Ada 74820
Home: 580.332.7394
Joe Cell: 580.421.6583
Email: lancasterllc@hughes.net
(Hamps)

OREGON

GOURLEY FAMILY FARMS
Mark & Joyce Gourley
2280 Primrose Loop
Philomath 97370
Phone: 541.929.6264
(Yorks)

PENNSYLVANIA

PEPPE GENETICS
Jacob Pepple
814 Lafayette Rd.
New Enterprise 16664
Jacob: 814.766.2970
James: 814.766.2318
Email: prh@hotmail.com
(Durocs, Yorks)

TENNESSEE

BART JONES
466 Red Hill Rd.
Lafayette 37083
Phone: 615.666.3098
(Durocs, Landrace, Yorks)

DEREK BARTHOLOMEW
2965 Laster Rd.
Huron 38345
Phone: 731.968.5230
Cell: 731.614.4232
(Durocs, Yorks)

TEXAS

5A FARMS
Tim Armour
780 ACR 2205
Palestine 75801
Phone: 903.538.2175
(Yorks, Crossbreds)

ALBERT'S YORKSHIRE FARM
John Albert
1442 Haeckerville Rd.
Cibolo 78108
Phone: 210.658.5017
(Hamps, Landrace, Yorks)

CARL KENT & SONS
Box 62
Pottsboro 75076
Home: 903.786.9423
Carl's Cell: 903.271.5128
(Hamps, Yorks, Crossbreds)

DONALD HILSCHER
3950 FM 1125
Bowie 76230
Phone: 940.872.5785
Email: omatoes@yahoo.com
(Durocs, Spots)

HOLLEY FARMS
Ron Holley & Cody McCleery
3124 Old Brock Rd.
Weatherford 76087
Cody home: 817.594.3625
Cody: 817.613.6666
Email: doctorduroc@att.net
(Durocs, Hamps, Yorks, Crossbreds)

LUCKY GENETICS
Andrew & John Turek
302 Co. Rd. 425
Stockdale 78160
Phone: 530.824.4731
Andrew: 530.510.9322
(Hamps, Yorks)

REAL HOG FARMS
Charles Real
15492 Real Rock Rd.
Marion 78124
Phone: 830.914.2833
Charles' Cell: 210.827.7351
Fax: 830.914.3437
(Durocs, Hamps, Yorks)

SAM SPARGER & FAMILY
7900 Hwy. 6
DeLeon 76444
Sam's Home: 254.893.2137
Sam's Cell: 254.842.4008
Danny's Home: 254.893.5929
(Durocs, Hamps, Yorks)

TAILGATE FARMS
Levelland
Phone: 325.446.4166
Web: www.tailgatefarms-texas.com
(Yorks, Crossbreds)

WISCONSIN

BADGER SWINE
Bill Krieg & Mark Justmann
N. 4477 Co. Rd. 1
Lowell 53557
Bill: 920.342.8105
Mark: 920.344.0230
(Durocs, Hamps, Yorks)

KUHLOW GIRLS SHOWPIGS
Chelsea, Kallista & Darin Kuhlow
407 Allen St.
Clinton 53525
Chelsea: 608-774-2610
Darin: 608-436-0217
email: chelsea@kuhlowgirls.com
(Durocs, Yorks, Crossbreds)

NUTTLEMAN FARMS
Steve Nuttleman
N. 55725 CTH DE
Bangor 54614
Steve: 608.386.8803
(Durocs, Yorks, Polands)

TOM KNAUER FAMILY
352 N County Rd. M
Avalon 53505
Phone: 608.883.2838
(Hamps, Landrace)

TOM RAKE FAMILY
6840 Schumacher
Waunakee 53597
Phone: 608.849.7458
Fax: 608.849.7461
(Durocs, Hamps, Yorks)

TRIPLE L SHOWPIGS
Darren, Laura, Austin & Natalie Lynd
5027 S. Reid Rd.
Janesville 53546
Phone: 608.676.5816
(Durocs, Hamps, Yorks)

WILSON'S PRAIRIE VIEW FARM
Scott & Ralph Wilson
N. 5627 Co. Hwy. DD
Burlington 53105
Phone: 262.763.6646
Scott: 262.763.6145
Fax: 262.763.6145
(Durocs, Hamps, Landrace, Yorks)

WINMOR FARMS
5027 S. Reid. Rd.
Janesville 53546
Ron Smith: 608.290.7881
Jennifer Slagle: 515.418.0634
Email: info@winmorfarms.com
(Hamps, Yorks)

REACH MORE PEOPLE

*with an e-blast from the
National Swine Registry!*

The National Swine Registry has more than 10,000 potential customers on our e-lists for you to advertise your sale, service or product.

Send us your advertisement or have us build it for you, and enjoy the benefits of reaching more people in less time than ever before!

No printer fees.

No postal fees.

No worries.



only
3¢*/name

* average cost for e-list use

BRICE CONOVER

Your proven source for champions!

BRED GILT SALES

SALES HOSTED ON **Showpig.com**

Nov. 17

Featuring gilts due with December litters.

Dec. 4

Featuring gilts due with January and February litters.



KING KONG

Featured Berkshire Service Sire

The stoutest boar to come out in a long time.

Featured AI Sires:

BERKSHIRES: Cadillac, Gunslinger, King Kong, Fly By and Mainline

CROSSBREDS: Colt 45, Monumental 38-9, Super Monster Clone, Yippie-Ki-Yay

CHESTERS: Thunder, Bone Crusher

DUROCS: Flash Drive, Legend,

Colorado High

YORKSHIRE: Great White

Visit my website for more pictures and information.

80-100 HEAD

Berkshires :: Yorkshires

Durocs :: Chesters

Crossbreds



Gunslinger has sired many champions and high sellers, including the 2014 STC Champion & Reserve Champion Gilts that sold for \$11,450.



This awesome Ohio State Fair Champion Barrow is bred like many of the bred gilts selling in these sales.

Brice Conover

Box 427

Baxter, IA 50028

515.979.3890

www.conovershowpigs.com

Proven and reputable herd that has produced 40 NATIONAL CHAMPIONS!



**A WHO'S WHO LIST OF PAST
BTC FEMALE BUYERS:**
Lairds • Harlan Reid
Rodibaughs • Randy Shipley
Norman Bros. & Son
Kent Brattain • Dan Burzlaff
Marty Hultman & Gary Wall
...and many more satisfied customers!

*This is by far the best set of bred
females that I have ever offered.
Many top AI service sires were used.*

Featured Lot: 24-6 is a littermate to my four NBS® gilts that sold for \$28,000. Two littermates earned grand and reserve champion honors!



YORKSHIRE

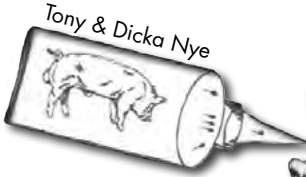
Many great Yorkshire females sell. Most are bred like my past state fair champions.

BERKSHIRE

Bred gilts like the two above will sell!

My herd boars have been Premier Sire at the last **5** national shows!
Sired **11** national champions and
8 of the last **10** national champion gilts!

Breeder's Choice Customer Appreciation Bred Gilt Sale



Saturday, Dec. 13 6:30 p.m.
EST

Preble County Fairgrounds, Eaton, Ohio

Sale Day Phone: 740.606.0031

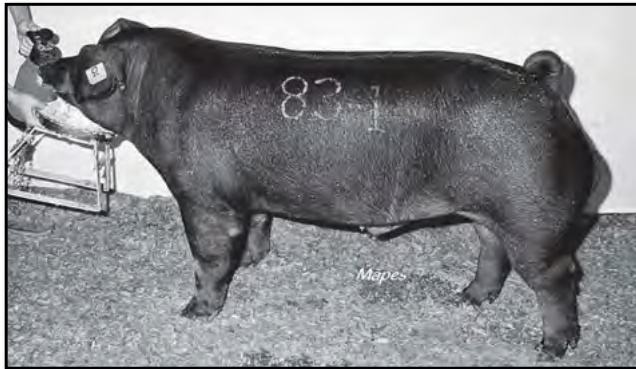
Auctioneer: Kevin Wendt, Ohio • NSR Rep: Blane Evans 765.490.3731



DEEP TRACKS
(Foot Print x Ultra)



THE MAYOR
(Point Maker x Focus)



ALL WISE
(Wise Guy x Rib Crib)

This sale will feature gilts bred for late-December, January and February purebred and crossbred litters.

This year will include **Berkshire, Chester White, Duroc, Hampshire, Hereford, Poland China, Spotted, Yorkshire** and **Crossbred** gilts!

Selling approximately 55-60 bred gilts!

Check our website for current information! www.breederschoicesires.com



Tony & Dicka Nye

4815 St. Rt. 753 SE • Washington C.H., OH 43160

Home: 740.636.8465 • Toll free: 888.267.9864 • Cell: 740.606.0031 • thenyes@ohiohills.com



Advice From A Tree

Go out on a limb.

Weather the storm.

Be flexible.

Remember your roots.

Stand for what's good.

Building better Hampshires
is in our roots.

Fads have not changed
our selection.

For a better Hampshire,
the brightest tree is in
Higginsville, Mo.



7-9 Beacon x Huggy Bear

Breeding
hogs for
sale at
the farm.



30-3 Beacon x 7-9

Blended
genetics for
a successful
outcome.

**COLT
AND
MIKE**



18130 Brush Creek Rd., Higginsville, MO 64037

Mike: 816.797.5450

WILLIAMS

mwauctions@ctcis.net

WW-Paul Livestock Scales

Proud sponsor of the **NJSA**



Model 58SX
500-lb. single animal
livestock scale

The new and improved WW-Paul Scale Model 58SX includes the new side slide, bi-fold gate design for faster and easier operation. The Model 58SX is easily retrofitted with an electronic cell, readout indicator and ticket or tape printer, if desired. Heavy-duty construction guarantees an accurate and dependable livestock scale.



Hog & Sheep
pens

All hog and sheep components are constructed from A-513 high-tensile steel tubing. Framework is fabricated from 1 1/2", 14-gauge tubing, and interior vertical rails are built from 1 1/2", 16-gauge tubing. All joints are saddle cut for extra strength. Gate frame is 72" tall and panels are available in 41" or 48" heights. All units have powder coat finish.

Call for name of nearest dealer.



WW-PAUL LIVESTOCK SCALES

Duncan, Okla., 800.657.6062 • Thomas, Okla. 800.999.1214

bo4scales@paulscales.com • P.O. Box 729 • Duncan, OK 73533



WATSON YORKSHIRES

1860 Watson Road | Hillsboro, KY 41049

George: 606.876.4079 | cell: 606.748.1317

Seedstock
EDGE



One Look

WG2 Fire Wall 43-4 x WG20 Diego 77-8

Thanks to Rodibaugh's, Indiana,
for your 2014 NBS[®] purchase.

*Thank you to everyone who offered
prayers and support to our family.*

HAMPSHIRE: *The future is bright!*

Seedstock
EDGE



JL2 Wish Bone 14-6

CD00 Point Taken 257-3 x JL1 Dorothy 4-4
Bred Gilts, Showpigs and Semen available.

LANCASTER HAMPSHIRE

Joe & Georgia Lancaster • 17064 Co. Rd. 3500 • Ada, OK 74820 • (H): 580.332.7394 • (C): 580.421.6583

Dotson Farms

EARL DOTSON & FAMILY
 9339 NW Oregon Drive :: Cameron, MO 64429
 Earl: 515.321.3264
 James: 816.724.1355

We will be sharing our genetics private-treaty at the farm and at national shows.



Beacon 28-2

Every sow's pedigree includes Media 13-7 + Feith's Beacon 28-2 or Feith's Giant 25-3



Giant 25-3



Media 13-7

BOLN9 4 REAL 2-2 x MSM9 MEDIA 24-9 • Media 13-7 in the pedigree means:
 Bigger and Leaner | Sounder (hip, hocks and toes) | Flexible | Stouter, Cleaner Bone
 Immature Skeletons | Improved Design | Aggressive | Big Appetites – Efficient ADG

Our path with this foundation sow...



Granddaughter

GRANDDAUGHTER
 Alabama Outlaw x Beacon x Media 13-7
 Reserve Champion Hampshire Gilt,
 2014 Missouri State Fair



Grandson

GRANDSON
 RUSSEL
 Lumberyard x Beacon x Media 13-7
 Returning to herd



Grandson

GRANDSON
 WRECKING BALL
 Boner x Beacon x Media 13-7
 Serving at Power Point Boar Stud



Son

SON
 Knockout x Media 13-7
 Reserve Champion Hampshire Boar,
 2012 NBS®

Rodibaugh

BRED TO WIN!



ONLINE BRED GILT SALE

MONDAY, DEC. 8

Hosted with Riggs and Thurston

**Durocs, Crossbreds and
Yorkshires**

Call Steve or Jim for details.

**Res. Champion Overall and Champion York Gilt,
'14 NJSA Southwest Regional**

4th-Place Yorkshire Gilt, '14 Kansas State Fair

Shown by Blake Holmes. Out of the bred gilt Vickreys purchased from us. Littermate was Res. Jr. Division Gilt at the Indiana State Fair.



**Champion York Gilt,
'14 NBS®**

BU2 TAYLOR MADE 10-3 x TPSP0 GRUS PLATT
ATTACK 26-3

Thanks to Norman Brothers and Son, Ill.



**Res. Champion York Gilt,
'14 NBS®**

RIY3 RICOCHET 32-4 x JGR9 DADDY MACK 36-4

Thanks to Woodworth Farms, Mo.



ONE LOOK

WG2 FIRE WALL 43-4 x WG20 DIEGO 77-8
*Purchased from Watson Yorkshires, Ky.,
at 2014 NBS®.*



3053 W. 725 S. • Rensselaer, IN 47978

home cell

David 219.866.3325 219.863.4219

Jim 219.866.8960 219.863.8645

John 219.866.7002 219.863.4221

Steve 219.866.7394 219.863.8647



Check us out at: 

Rodibaugh.com

CHAMPION YORK BOAR

2014

NBS[®]



MARLIN

UNTOUCHABLE X TANK

Bred by Hofschulte, Okla.

GIBSON GIRLS

**H.L. GIBSON • 877.477.6430 • CELL 740.571.6226 • GBSNGIRLS@HOTMAIL.COM
4480 RT 22 WEST, CIRCLEVILLE, OH 43113 (Between McCoys and Shipleys)**

CHECK US OUT AT WWW.GBSNGIRLS.COM

Designed by
**Seedstock
EDGE**

BAADE-PENNER

Online Bred Gilt Sale

Tuesday, Dec. 2, 2014 Showpig.com

Offering 30+ Hampshire, Yorkshire and crossbred females due in January and February.



DRAFT PICK 139-4
All Swag x Cowbell



TONGUE TIED 14-1
Speechless x Amazing Race



DOESN'T MATTER 23-2
Bone Chill x Point Maker



FIRST WORD 3-9
Speechless x Point Maker

Kyle Baade (c)
402.239.2229

John Penner (c)
402.223.7108

Est. 2013

BAADE
genetics



baadegenetics.com

Red Genetics

get you in the

Blue!



Moogy Bear

**\$16,000 RES. DUROC BOAR,
'14 INDIANA STATE FAIR**

HD3 Full Back 42-5 x DRS1 Complete Game 9-4
Thanks to Shipley Swine Genetics, Ohio,
for their purchase. For semen call 866-376-8986.



Challenged

**CHAMPION DUROC BOAR,
'14 ILLINOIS STATE FAIR**
For semen call Dan.



Full Back

Owned with Cain Super
Sires and Huinker Durocs.

Gilts like this will sell!

40 DUROC LITTERS expected to arrive between December-March.

Sired by Elite Sires Including:

ALL SHOOK UP | AUTOMATIC | BRUTE
CHALLENGED | FULL BACK | LIFETIME
MOOGY BEAR | ROGER B | YAK II

Manito, Illinois

Dan's Durocs

Dan, Amanda, Griffin, Amelia & Evan

309-208-5059 Herd Mark DAN

DAN, AMANDA, GRIFFIN, AMELIA & EVAN MEEKER
24574 NCR 3400E • Manito, IL 61546
309.208.5059 • dmeekerfarm@gmail.com

Meeker

SHOW TEAM
GRIFFIN • AMELIA • EVAN

Like us on:
facebook.

www.dansdurocs.com

Designed by
Seedstock
EDGE



Designed by
Seedstock
EDGE

Bred Gilt *Spectacular* Dec. 13, 2014 • 1 p.m. Richwood Ohio Fairgrounds



D 77-8

Firestorm x Crown Royal
Due Feb. 26, to No Rules



D 81-5

Firestorm x Extraordinary
Due Dec. 25, to No Rules



Hx 12-4

Big Change x Paparazzi
Due Dec. 24, to Bright Lights



Hx 402-9

Dynasty x Paparazzi
Due Dec. 28, to Double Vision



Hx 290-7

Ballistic x Hi Def
Due Jan. 20, to Dillinger



Vx 475-5

Dynasty x Double
Due Jan. 7, to Fame Monster

Check our website
for a complete list
of sale offerings.

Vx 415-7

Fame Monster x Hillbilly Cadillac
Due Jan. 3, to Desert Storm



Service Sires:

Bold Ruler | No Rules
Built Right | Desert Storm
Double Vision | Bright Lights
Bugsy | Fame Monster
Decidedly Different
Hamp Stamp

DELIVERY ARRANGEMENTS CAN BE MADE TO MOST AREAS

NSR Rep.: Blaine Evans: 765.490.3731

Scott Isler: 740.262.2850 • Bill Isler: 740.815.2910

Nathan Isler: 740.225.5358 • Farm/Office: 740.494.2410

islergenetics.com



Bred to make an **IMPACT**



CHAMPION YORK GILT, '14 STC
 Congratulations to Hannah Zundell
Sired by Best Yet



**CHAMPION GILT OVERALL & CHAMPION
 YORK GILT, '14 NJSA EASTERN REGIONAL**
 Congratulations to Hannah Zundell
Sired by Best Yet



**CHAMPION YORK BARROW,
 '14 NJSA EASTERN REGIONAL**
 Congratulations to Scott Gardner
Sired by Wahoo

Bred Gilt Sale December 10

We will be offering
 females bred to
 produce results
 like these.



Farm: 4730 Coonpath Road, Pleasantville, OH 43148

Mailing: 2055 Carroll Eastern Road, Pleasantville, OH 43148

Beac Thompson: 740.808.1041

Thompson Bros Genetics.com



WE'RE MOVING!



**WinMor
FARMS**

NEW ADDRESS 671 400TH AVENUE - GRINNELL, IOWA
RON SMITH 608.290.7881 JENNIFER SLAGLE 515.729.2778

WWW.WINMORFARMS.COM

 LIKE US ON FACEBOOK!

BRED FOUNDATION FEMALE SALE

December 8

Showpig.com

Build a strong
FOUNDATION

At Ifft Yorkshires our focus is on building true foundation Yorkshire and crossbred females. We strongly believe, with the right foundation, purple banners and productive females can go hand in hand. Get your foundation started with Ifft Yorkshires.

"We have been using Yorkshire gilts from the Iffts for several years and have had great success in the crate and the ring. Our customers have also done well with barrows and gilts carrying their bloodlines." — Carl Kent, TX

"A few years ago, we purchased what we hoped to be a foundation female from the Iffts. Walking through the sow herd today, a large percent of them go back to our Recon sow. It's refreshing when talking to either Josh or Mr. Jim; the conversation always leads to the passion of making great females." — Marty Louviere, LA



21748 E. 500 N. Rd., Fairbury, IL 61739
Home: 815-692-3939
Josh's cell: 815.848.3949
jfft@route24.net  
iffthyorkshires.com

Ploeger Showpigs

Lonnie Ploeger: 712.490.7669
Pierson, Iowa

Happy Holidays

Thank you to our customers for their hard work this year!



1. Reserve Champion Mediumweight Market Hog, Wyoming State Fair :: Shown by Logan Mehling
2. Class-Winning Heavyweight Market Hog, Colorado State Fair :: Shown by Tawni Strachan
3. Grand Champion Market Hog, Iowa State Block & Bridle Show :: Shown by Denton Sanders and Scottie Westra
4. 4-H Champion York Gilt, Iowa State Fair :: Shown by Jacob Schafer
5. Champion Duroc Gilt, Iowa State Fair Open Show :: Shown by Ron Meister Family
6. Reserve Champion York Market Hog, Iowa State Fair :: Shown by Daniel Kessenich
7. Forever Stellar, Champion York Boar, Iowa State Fair :: Purchased by SGI

Upcoming Sales

Bred Gilt Sale >> Dec. 7 >> showpig.com

Showpig Sale >> March 21 >> Sac County Fairgrounds, IA

Showpig Sale >> March 28 >> The Ranch, Loveland, CO

ploegershowpigs.com

**NOW thru March 20, 2015: 50% or more off LVS Sires!
Call LVS — 1-800-972-8766**



Maximus

Yorkshire
[Untouchable 159-2 x Bullet Proof]
Bred by Steve Cobb and Family

**\$230,000 Record Breaking
Reserve Champion York Boar
2014 STC**



Double Vision

Exotic [Creature 63-11 x Bear]
Bred by Steve Cobb & Family
Stress carrier

He's Like Nothing Else Out There!!!

**www.leanvaluesires.com
and on facebook and twitter
1.800.972.8766**



**Complete information for these boars can be
found on the web at www.leanvaluesires.com**



STEWART'S
DUROC FARM

Stewart's Duroc Farm
1750 212th St., Waverly, IA 50677
Doug: 319.352.1709
Cell: 319.231.0676
stewartsdurocs@gmail.com

Designed by
**Seedstock
EDGE**

FIND YOUR
Champion

BRED GILT SALE
DEC. 3 

OFFERING BRED GILTS DUE IN LATE DECEMBER, JANUARY AND EARLY FEBRUARY. CHECK OUR WEBSITE FOR MORE INFORMATION.



SDF LOAD 'EM UP

BOLD RULER X BOLD STATEMENT

FULL BROTHER TO LIGHT 'EM UP. MORE BONE, MORE BODY.

Most gilts will be bred to these two boars.



SDF PATHFINDER

ICONIC X BOLD RULER

THE "WILD" ICONIC. HEAVY BONED AND MASSIVE IN RIB AND BODY.



THANKS TO EVERYONE WHO PURCHASED SHOWPIGS AND SEMEN THIS FALL. SPECIAL THANKS TO THE HOFSCHULTE FAMILY FOR PURCHASING OUR CHAMPION CROSSBRED BOAR AT THE 2014 NBS®.

WWW.STEWARTSDUROCFARM.COM



RWG HERD BOAR LINEUP



POWER PLANT

BONE THUG x THOR

The power of a hog starts in his rib and this guy has ideal rib shape and monster volume! He is a big chested boar with perfect structure and an ideal hock set.

USE HIM HARD!



THE PROPHET

SLOW RIDE x ECLIPSE

SOLD TO PREMIUM BLEND GENETICS:
\$130K STC Class Winning Yorkshire Boar



TRANSFORMER

BONE THUG x SOLID MONSTER

His stoutness, correctness and thickness will transform his progeny into the kind that folks love to drive. He comes in an ideal frame size.

YOU NEED SOME OF THIS GUY!



HIGH VOLTAGE

BONE THUG x 8 BALL

THIS GUY IS ELECTRIC! Tall shouldered, high headed, killer look with power to burn. Your sows deserve a boar of this quality! Next to impossible to find a better hip and hind leg than High Voltage!



MEASURE THIS

BOLD RULER x ULTRA

Littermate to the 2nd place behind the Grand at Denver and a class winner at Belton.

RWG SOW BATTERY

WATCH FOR OFFSPRING OF THESE SOWS IN OUR ONLINE SALE!



X49-83

SOLID MONSTER x SPLIT SECOND

DAM OF COMFORT ZONE. X49-83 is a littermate to Machete. She is a daughter of the GREAT Split Second sow that produced Black Attack, Super Special, 8 Ball, Super 8, Treasure Chest, Cover Shot and Machete.



X59-86

HILLBILLY CADILLAC x 8 BALL

Produced two herd boars in her first litter — an RWG herd sire, RWG Thug 61-5 and Texas Thug.



X158-86

8 BALL x BATMAN x MONSTER X SUPER 7

DAM OF X59-86 & HIGH VOLTAGE. Produced Back in Black in her first litter.



D86-10

BUCK NAKED x DOUBLE SHIFT

Littermate to Accelerator.



RICK & NIKI WHITMAN

RICK 512.540.1119 NIKI 512.540.1490 RWGENETICS@GMAIL.COM

ND Check out rwgenetics.com for more information about our online bred female sale!

JGR *Bred with a purpose!*

TUESDAY
Dec. 2
BRED GILT
SALE

Showpig.com



Offering Yorkshire, Hampshire and crossbred bred gilts due Jan. and Feb.

Grimm females produce boars like these

Champion York
Boar, '14 SWTC



Thanks to Steve and Aaron Cobb, Ark., for their purchase.



'14 SWTC Entry

Thanks to Crossroads Genetics, Robin Ridge and Crone Farms, Ind., for their purchase.

Champion York
Boar, '14 WPX



Thanks to Lean Value Sires, Ohio, for their purchase.



Thanks to Cain Super Sires, Iowa, for their purchase.

Res. Champion York
Boar, '14 NBS®



Call Jim for semen on Grimm herdsires.

10316 N. Ave. • Maynard, IA 50655
Jim: 563.637.2351 • Cell: 563.920.7590
www.grimmpurebreds.com



2014 Joliet Junior College • Joliet, Illinois

Illini Winter Bred Gilt Classic

Doors open at 10 p.m. Dec. 13 • Online preview showpig.com Dec. 13

Sunday, Dec. 14

Judge: *Mark Hoge*

Auctioneer: *Chad Day*

NSR Rep: *Michael Lackey* :: 765.427.3733

Check in by 9 a.m.

Sift starts at 12 p.m. • Sale to follow

Contact

Derek Moore :: 618.599.2885 Ty Olson :: 217.248.2767

Bred Female Dominance

These committed breeders will be offering some of their best bred females — period.



Robert Meeker & Family



CONSIGNMENTS OPEN TO THE PUBLIC

Entry Deadline: Dec. 5

Entry Fee: \$20/head

Breeder Name: _____

Bred Gilt/Sow Breed: _____ Parity: _____ Due Date: _____

Pedigree: _____ Service Sire: _____

Age: _____

Bred (check one): Purebred Crossbred

Email entry form to ty.olson@hubbardfeeds.com or print and mail to:

Ty Olson
1117 Lafayette St.,
Beardstown, IL 62618

Printable Entry Form on showpig.com



HILLBILLY BONE

Since his first crop of pigs hit the ground in 2010, one could argue no other sire in the industry has had more influence on the pedigrees of more winners than HILLBILLY BONE. His sons and daughters have contributed to countless champions inside the showing and perhaps more importantly, they are the foundation of breeding programs from coast to coast. The sun tends to set on most sires in months, not years, yet it was HILLBILLY that most recently sired the Grand Overall Barrow at Houston and OYE on the same day, in the same year - 4 years after his first crop. In our industry, its rare for a boar to remain relevant beyond a breeding season or two but HILLBILLY BONE will forever remain timeless.

THESE FEMALES WERE BRED HERE AT 4K AND ARE MAKING A LASTING IMPACT ON THE INDUSTRY. THEY TRULY EXEMPLIFY 'DEPTH OF PEDIGREE' AND OUR APPROACH TO BUILDING FEMALES THAT WILL BREED, MILK AND MAKE THE NEXT GENERATION



Owned by: Justin Hardin
DOOLITTLE RAID X FATAL ATTRACTION
Mother of Mountain Man & Kissin' Cousins



Owned by: Nathan Ray
HILLBILLY BONE X SOUND SYSTEM
Mother of Sugar Daddy & Sugar Ray



Owned by: AJ Genter
HILLBILLY BONE X SOUND SYSTEM X HILLBILLY'S GRANDDAM
Mother of Renig

4K FARMS BRED FEMALE SALE DECEMBER 4TH

the real dedicated ladies...

After much consideration, 4K Farms is excited to announce our FIRST EVER Bred Female Sale. On December 4th we will offer a set of females that represent our program and our approach. You can bet that Hillbilly Bone will run deep throughout the offering.



KIRK & JERRA SWANSON
DANIEL SWANSON, HERDSMAN

2670 K Avenue | Red Oak, IA 51566

Kirk Cell 712-621-3277 | Office 712-623-3066

email: kjhdswanson@yahoo.com | web: www.4kfarms.com





Real McCoy 12.7.14
BRED GILT SALE

SHOWPIG.COM

THIS GROUP OF FEMALES WILL BE SERVICED BY
 SOME OF THE HOTTEST AND MOST PREDICTABLE SIRES ON THE MARKET.



REAL MCCOY GENETICS

JIM 740.572.0271 - MIKE 740.572.0272

1887 SR 734 NE - BLOOMINGBURG, OH 43106

WWW.REALMCCOYGENETICS.COM

follow us on facebook and twitter



Ladies FIRST

BRED FEMALE SALE

DECEMBER 9TH

online at showpig.com

**INCLUDING STAND OUT
FEMALES FROM BOTH
TEAM SLOAN LIVESTOCK
& JACKSON SHOWPIGS**

multiple breeds represented.



TROY SLOAN: 816-284-1893

WWW.TEAMSLOANLIVESTOCK.COM



MIKE JACKSON: 317-694-5666

WWW.JACKSONSHOWPIGS.COM

History repeats itself and sayings hold true...

BEHIND EVERY  CHAMPION
IS A SOW THAT MAKES IT HAPPEN.



BRED FEMALE SALE
DECEMBER 9TH
SHOWPIG.COM

**WE'RE SHARING OUR CHANCE AT SUCCESS! THESE ARE SOWS THAT
HAVE WORKED FOR US, THEIR PROGENY CAN WORK FOR YOU.**



JESSE, AMY, MAX AND HARPER HEIMER
JH@JHEIMER.COM | 217-257-0138
WWW.HEIMERHAMPS.COM



HEIMER HAMPSHIRE

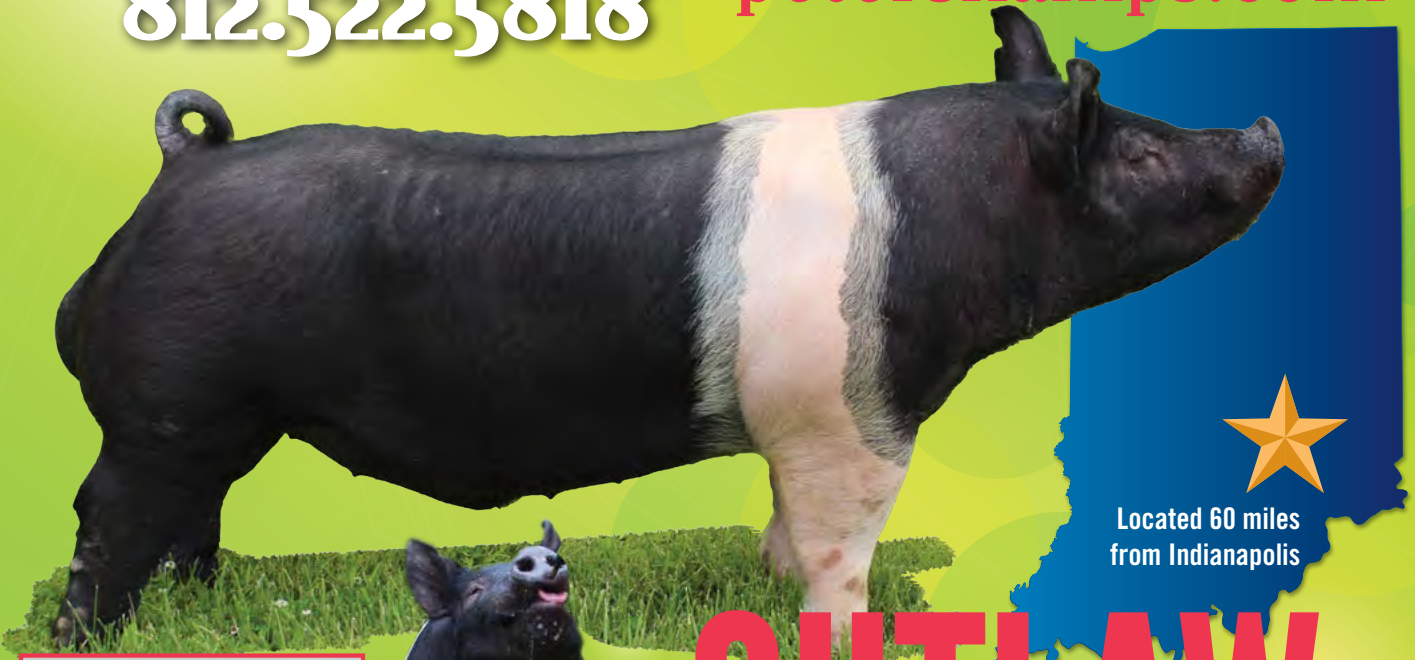
PETERS HAMPSHIRE & SHOWPIGS

Delbert, Benjamin & Trevor

812.522.5818

974 W 1050 S • Columbus, Indiana

petershamps.com



Located 60 miles
from Indianapolis

OUTLAW

Trouble Maker x Capital Investment x Sun Tea

One of the great boars of 2014!

Owned by Peters Hamps & Showpigs and Shaffer's Goldrush, Ind.
For semen call Terry Shaffer at 888-690-2022.



5th Overall & Champion Hamp Gilt,
'14 NJSS :: Littermate to Outlaw

We do not feel like words or pictures can describe **Outlaw** to his full potential. Simply put, **Outlaw** is a GREAT ONE! He is the soundest Hampshire boar we may have ever seen. His hocks are clean, his front pasterns are up where they need to be, his toes are even, all four legs go straight, his hind legs extend out past his hip with ease, he reaches out far coming at you and from hock to ground, he is square. **Outlaw** has a tremendous amount of center body dimension and depth of body. He's wide topped with a groove, his chine bone is laid in between his blades correctly, his foot and bone size match his body mass, and he is ideal in his tail head placement. **Outlaw** is as wide at the ground as he is up on top. He is thick hided and loose skinned with an excellent Hampshire belt. His pedigree is loaded. The sow is a Capital Investment x Sun Tea female that was purchased from Delbert Peters. Also, **Outlaw's** littermate sister was the Grand Champion Hampshire Gilt at the 2014 National Junior Summer Spectacular in Louisville, Kentucky! If you are looking for a Hampshire boar that combines, mass, volume, structure, breed characteristics and a solid pedigree, take a look at **Outlaw!**

We have June & July gilts for sale.

We invite you to see our sow herd.

Our conception rate was very good this fall. That means we have a few more bred gilts than we can fit in our farrowing house. If you are interested in any of these gilts, give us a call.



20-7 Point Maker x Real Deal
Bred to Outlaw :: Due early-Jan.



21-4 Ryder Cup x Home Grown
Bred to Outlaw :: Due early-Feb.



7-9 Home Grown x 5th Degree
Bred to Haymaker :: Due early-Dec.



11-3 Stop Me x Model T
Bred to Trouble Maker :: Due early-Jan.



5-1 Point Blank x Soda Pop
Bred to Pumpkin :: Due mid-Jan.



24-2 Frozen in Time x Buried Alive
Bred to Point Maker 21-10 :: Due early-Jan.



12-2 Untouchable x Super Monster
Bred to Half Cocked :: Due early-Jan.



9-86 Monster Pipe
Bred to Bates Motel :: Due-early Jan.

two online bred gilt sales



Motorboater Cross Gilt
Bred to Bandit - Due 12.4



Point Maker Hamp Gilt
Bred to PM 90-1 - Due 12.5



Motorboater Cross Gilt
Bred to Bandit - Due 12.26



Point Maker Hamp Gilt
Bred to Reach - Due 12.13

**nov
25
dec
17**

DOUBLE THE OPPORTUNITY for your success!



**Grand Overall
IL State Fair**
raised by dobbels & miller
sired by point maker



**Grand Barrow
WI State Fair**
raised by burzloff
sired by motorboater



**Reserve Barrow
MO State Fair**
raised by team sloan
sired by swagger

**congrats
to all of our
customers
on a great
year!**



CONGRATULATIONS!

These champions were all purchased through our online sales!



Grand Overall State Fair of TX
sold in our 5.28 online sale



Hi Point Genetics

chrisman, il
877-247-3636
hipointgenetics.com



Grand Gilt Overall Tulsa State Fair
sold in our 4.17 online sale



Champion York Barrow MO State Fair
sold in our 4.17 online sale



Reserve Gilt IL State Fair
sold in our 3.12 online sale



Reference

Datebook

NOVEMBER

25 Hi Point Genetics Online Bred Gilt Sale, showpig.com

DECEMBER

2 Baade-Penner Online Bred Gilt Sale, showpig.com

2 Grimm Purebreds Online Bred Gilt Sale, showpig.com

3 Olsen Family Online Bred Gilt Sale, buyerschoiceauction.com

3 Premium Blend Genetics Online Bred Gilt Sale, showpig.com

3 Stewart's Duroc Farm Online Bred Gilt Sale, showpig.com

4 4K Farms Bred Female Sale, showpig.com

4 Brice Conover Bred Gilt Sale, showpig.com

4 Jan./Feb. Seedstock EDGE Ad Deadline

4 Triple B Online Bred Gilt Sale, showpig.com

7 Ploeger Showpigs Bred Gilt Sale, showpig.com

7 Real McCoy Bred Gilt Sale, showpig.com

8 Ifft Yorkshires Bred Foundation Female Sale, showpig.com

8 Sieren Swine Farm Online Sale, showpig.com

9 Boyle Farms Bred Gilt Online Sale, thepigplanet.com

9 Genetic Edge Online Sale, thepigplanet.com

9 Heimer Hampshires Bred Female Sale, showpig.com

9 Ladies First Bred Female Sale, showpig.com

9 Rodibaugh Online Bred Gilt Sale, thepigplanet.com

9 Stewart's Duroc Farm Online Bred Gilt Sale, showpig.com

10 Cobb Family Winter Online Bred Female Sale, showpig.com

10 Thompson Brothers Bred Female Sale, thepigplanet.com

11 NJSA Southeast Regional and NSR Winter Type Conference entry deadline

11 RW Genetics Online Bred Female Sale, showpig.com

13 Breeder's Choice Bred Gilt Sale, 6:30 p.m., Eaton, Ohio

13 Cain Super Sires Online Bred Gilt Sale, cainfarms.com

13 Isler Genetics Bred Gilt Spectacular, 1 p.m., Richwood, Ohio

14 Illini Winter Bred Gilt Sale, Joliet, Ill.

16 Boyle Farms Bred Gilt Online Sale, showpig.com

17 Hi Point Genetics Online Bred Gilt Sale, showpig.com

23 Boyle Farms Bred Gilt Online Sale, showpig.com

27-31 Arizona National, Phoenix, Ariz.

29 Sieren Swine Farm Online Sale, showpig.com

30 Boyle Farms Bred Gilt Online Sale, thepigplanet.com

JANUARY

9-10 Pennsylvania Farm Show, Harrisburg, Pa.

23 NSR Southwest Type Conference entry deadline

28-Feb. 1 NJSA Southeast Regional and NSR Winter Type Conference, Perry, Ga.

FEBRUARY

3 March Seedstock EDGE Ad Deadline

25-28 NSR Southwest Type Conference, Belton, Texas

MARCH

5-8 NJSA Western Regional, Turlock, Calif.

21 Ploeger Showpigs Sale, Sac County Fairgrounds, Iowa

26 April/May Seedstock EDGE Ad Deadline

28 Ploeger Showpigs Sale, Loveland, Colo.



McCleery
FAMILY DUROCS
Cody McCleery & Family

LOOK FOR OUR
ONLINE
Bred Gilt Sale
December 2014

351 W. Seaberry Ave. :: Poolville, TX 76487
www.mccleeryfamilydurocs.com

ROCA 6-1 Red Charge

Sold to Curt Zehr and Zehr farms.
Thanks, Curt, for your support.

For semen contact International Boar Semen
at 800-247-7877.

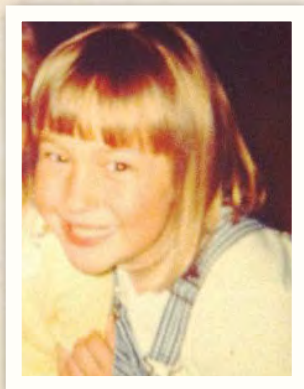
Cody: 817.613.6666 • Leslie: 817.597.9578 • Casey: 817.901.8088 • Roy: 817.901.6669 • doctorduroc@aol.com

WHEN GREW UP

By Ann Fry and
Katie Maupin



A year-long look at the staff
of the National Swine Registry



Ellen Olson thought she would spend her days writing health papers for youth exhibitors heading to shows. Instead, she is now the one organizing the shows.

NJSA events. Additionally, Olson works with the Mentoring Values People (MVP) program, online contests and the NJSA Junior Board of Directors.

When she isn't traveling to an NJSA event, Olson and her fiancé, Kyle Knauth, spend time on the farm working with their pigs.

ELLEN OLSON Junior Activities Coordinator

Ellen Olson spent her childhood daydreaming of the day her schedule would be full of farm calls in her truck with a vet box for a bed and the name of her veterinary clinic on the side. Her wardrobe would be full of green overalls with the American Veterinary Medical Association official symbol, Muck Boots and plastic gloves. She would spend more time talking to four-legged mammals than two. Olson couldn't wait for the day she would become a vet.

That was, until she learned how long she would have to go to school. Once that reality set in, Olson began looking for a new dream. She quickly settled on working for the National Junior Swine Association (NJSA). For a girl who grew up driving hogs in show rings throughout the country, this role was a natural choice. As Olson went through college, first at Lake Land College and then the University of Illinois, she always had the goal of someday coming to work in West Lafayette, Indiana, for the NJSA.

Olson's dream became reality much sooner than she ever anticipated. In July of this year, she was hired as the NJSA Junior Activities Coordinator. Olson now coordinates the four regional NJSA shows and assists in planning the National Junior Summer Spectacular and World Pork Expo Jr. National shows. She also helps organize NJSA youth leadership conferences and other

FAVORITE PART OF THE JOB:

"I most enjoy being at our shows and interacting with our members."

—Ellen Olson



In her role with the NSR, Ann Fry found a job that combined her love for livestock, livestock exhibition, writing and marketing.

to work there. Today, Fry not only knows what happens behind the scenes of the NSR, but found the perfect answer to her career conundrum. Her role as the Assistant Editor and Ad Coordinator has allowed her to combine her love for livestock, livestock exhibition, writing and marketing as she works with breeders to gather information and coordinate their advertisements, writes features for the *Seedstock EDGE*, edits magazine content and travels throughout the country to shows and sales.

When she's not in the office, Fry can still be found in the barn working with Southdown sheep and helping her husband, Matt, with their Shorthorn cattle.

ANN FRY Ad Coordinator and Assistant Editor

Ann Fry didn't have a clue what she wanted to be. After watching countless John Wayne movies with her brother, Fry's original plan was to be a cowgirl. But, by the time she reached middle school, her dreams had switched from becoming the next "Duke" to becoming a veterinarian. To study up on the trade, her dad gifted Fry all of James Harriot's books. After reading the collection, Fry was convinced she'd become a writer and share her everyday adventures with the world.

As she got involved with 4-H and FFA, Fry spent her free time showing Southdown sheep throughout the country. Most of her childhood was spent in the barn caring for her youth livestock projects. So, Fry decided regardless of what she decided to do with the rest of her life, she'd be involved with the agriculture industry.

Before her first day with the National Swine Registry, Fry remembers driving past the old office on US 52 wondering just what happened behind those doors and what it would be like

FAVORITE PART OF THE JOB:

"There's always something new, whether it's a story, ad to be designed or idea the *Seedstock EDGE* team has come up with to try out. I also enjoy talking with the breeders and learning their stories."

—Ann Fry

Reference

Index to Advertisers

NSR/NJSA

NJSA Southeast Regional.....	53
NJSA Sponsorship.....	27
NJSA Western Regional.....	54
NSR Christmas Greeting.....	28
NSR Southwest Type Conference.....	54
NSR Winter Type Conference.....	53
Seedstock EDGE Subscription.....	47
UDSR Donation.....	48

COMMERCIAL

ADM Alliance Nutrition – MoorMan’s ShowTec....	7
Baker, Dan, West Lafayette, IN.....	56
Berger, Mike, Bremen, IN.....	56
Clayton, Tony, Jefferson City, MO.....	56
Conover, Al, Baxter, IA.....	56
Day, Chad, Kokomo, IN.....	56
Farm & Ranch Connection.....	57
Kreis, Ron, Adamsville, OH.....	56
Linnebur Auctions, Inc., Flora, IN.....	57
Mullins, Dave, Danville, IN.....	57
Naughton, Dan, Atlanta, IL.....	57
Parrish, Howard, Edon, OH.....	57
Prairie State Semen, Inc., Champaign, IL.....	56
Purple Circle, Canyon, TX.....	57
Showbox, Crockett, TX.....	56
Wendt, Kevin, Irwin, OH.....	57
Williams, Mike, Higginsville, MO.....	57
WW-Paul Livestock Scales, Duncan, OK.....	65

ARKANSAS

Cobb, Steve & Family, Lake City.....	96
--------------------------------------	----

ILLINOIS

Dan’s Durocs, Manito.....	71
Fecke Livestock, Bonfield.....	8
Hi Point Genetics, Chrisman.....	88-89
Ifft Yorkshires, Fairbury.....	75
Illinois Duroc Breeders.....	81

INDIANA

Jackson Showpigs, Danville.....	84
Michel Showpigs, North Manchester.....	3
Peters Hamps and Showpigs, Columbus.....	86-87
Premium Blend Genetics, Arlington.....	93
Rodibaugh, Rensselaer.....	68
Shaffer’s Goldrush, Albany.....	6
Southern Gold Sires, Salem.....	9

IOWA

4K Farms, Red Oak.....	82
Cain Super Sires, Chariton.....	94
Conover, Brice, Baxter.....	62-63
Grimm Purebreds, Maynard.....	80
McCulloh Family Genetics, Delmar.....	19
Ploeger Showpigs, Pierson.....	76
Stewart’s Duroc Farm, Waverly.....	78
WinMor Farms, Grinnell.....	74

KENTUCKY

Watson Yorkshires, Hillsboro.....	66
-----------------------------------	----

MISSOURI

Dotson Farms, Cameron.....	67
Heimer Hampshires, Taylor.....	85

Team Sloan, Cameron.....	84
Williams, Mike and Colton, Higginsville.....	65

NEBRASKA

Baade Genetics, Plymouth.....	70
-------------------------------	----

OHIO

Breeder’s Choice, Washington Court House.....	64
Gibson Girls, Circleville.....	69
Isler Genetics, Prospect.....	72
Lean Value Sires, New Carlisle.....	77
Moyer, Tom & Family, Wauseon.....	13
Real McCoy Genetics, Bloomingburg.....	83
Shiplew Swine Genetics, Newark.....	2
Thompson Brothers, Pleasantville.....	73

OKLAHOMA

Lancaster Hampshires, Ada.....	66
Triple B Sires, Eufaula.....	95

PENNSYLVANIA

Pennsylvania Farm Show, Harrisburg.....	55
---	----

SOUTH DAKOTA

Olsen Farms, Irene.....	11
-------------------------	----

TEXAS

McCleery Family Durocs, Poolville.....	90
RW Genetics, Anderson.....	79



Become a member!

BENEFITS OF MEMBERSHIP:

- Litter registrations • Performance pedigrees • Breed promotion
- Marketing assistance • Free genetic consultation
- Across-herd genetic evaluations • National shows and sales



DUROC



HAMPSHIRE



LANDRACE



YORKSHIRE

NATIONALSWINE.COM



WINTER SAVINGS



ALL BOARS 1/2 OFF OR LESS

ALL BOARS 2/3 OFF OR LESS AFTER 11AM

October 20th—March 31st

BEYOND



OFF-SEASON PRICING
\$500 Pre-Order
\$200 After 11AM EST

**SPECIAL JANUARY
& FEBRUARY PRICING**
\$250 Pre-Order
\$100 AFTER 11AM EST

**Bone Thug x Creature (Creature 205's Littermate)
Bred By Steve Cobb & Family**

VISIONARY



OFF-SEASON PRICING
\$500 Pre-Order
\$200 After 11AM EST

**SPECIAL JANUARY
& FEBRUARY PRICING**
\$250 Pre-Order
\$100 AFTER 11AM EST

**Bone Collector x Super Monster
Bred By Steve Cobb & Family**



\$45 or LESS Shipping On All Orders - FREE Shipping on \$700 Orders



PremiumBlendGenetics.com 909N 900W Arlington, IN 46104 1-855-PBG-PIGS

cainfarms.com



888.281.1617

Designed by
Seedstock
EDGE

Cain Super Sires

The nation's largest Hampshire recorder



19760 490th St. • Chariton, IA 50049 • Earl: 641.203.1391 • Lee: 641.203.4447 • Dusty: 641.203.2257

⌘ ONLINE ⌘

BRED GILT SALE

» CAINFARMS.COM «

SATURDAY, DEC. 13, 2014

OFFERING 35 OF OUR BEST BRED GILTS!

GILTS WILL FARROW LATE DECEMBER THROUGH THE FIRST OF FEBRUARY.



CROSS **144-91**
TURBO CHARGE x BIG TIMBER
Due: Jan. 5 to ABOVE THE REST



HAMP **73-6**
WOODSTOCK x HE'S A TEN
Due: Jan. 2 to SCORE



CROSS **156-90**
BIG LEAGUE x WOODY
Due: Jan. 2 to ARTIC CAT



DUROC **13-7**
KING x RED ROCKET
Due: Jan. 8 to FULL BACK
Littermate to 2014 WPX gilt!
Dam is APOLLO's sister.



CROSS **312-93**
DELIVERANCE x ALL STAR'S MOTHER
Due: Jan. 31 to CRAZY BONE
Littermate to STUNNER!



HAMP **108-5**
WOODSTOCK x HE'S A TEN
Due: Jan. 13 to VISION QUEST



CROSS **311-90**
CRAZY BONE x BRING IT BACK
Due: Jan. 12 to ABOVE THE REST
Littermate to CRAZY EYE!

SHOWPIGS FOR SALE YEAR ROUND! We deliver to the WTC in Perry, Ga.

TRIPLE B'S ON-LINE BRED FEMALE SALE

December 4, 2014

Hosted by Showpig.com

This sale will feature Elite Bred Gilts and Proven Bred Sows
They will be bred to farrow during Late December, January and Early February.
Check Our website for a complete, detailed list of Sow's and Gilt's pedigrees
and due dates which will be posted by approximately November 24th!!!



Square Root

(Fare-N-Square x JLM Buckwheat)
Service Sire for Bred Females



Texas Thug

(Bone Thug x Hillbilly Cadillac)
Service Sire for Bred Females

Yippie-Ki-Yay

(Fare-N-Square x Trump This)
Service Sire for Bred Females



WINTER SPECIAL PRICING

NOVEMBER 15, 2014 - MARCH 15, 2015

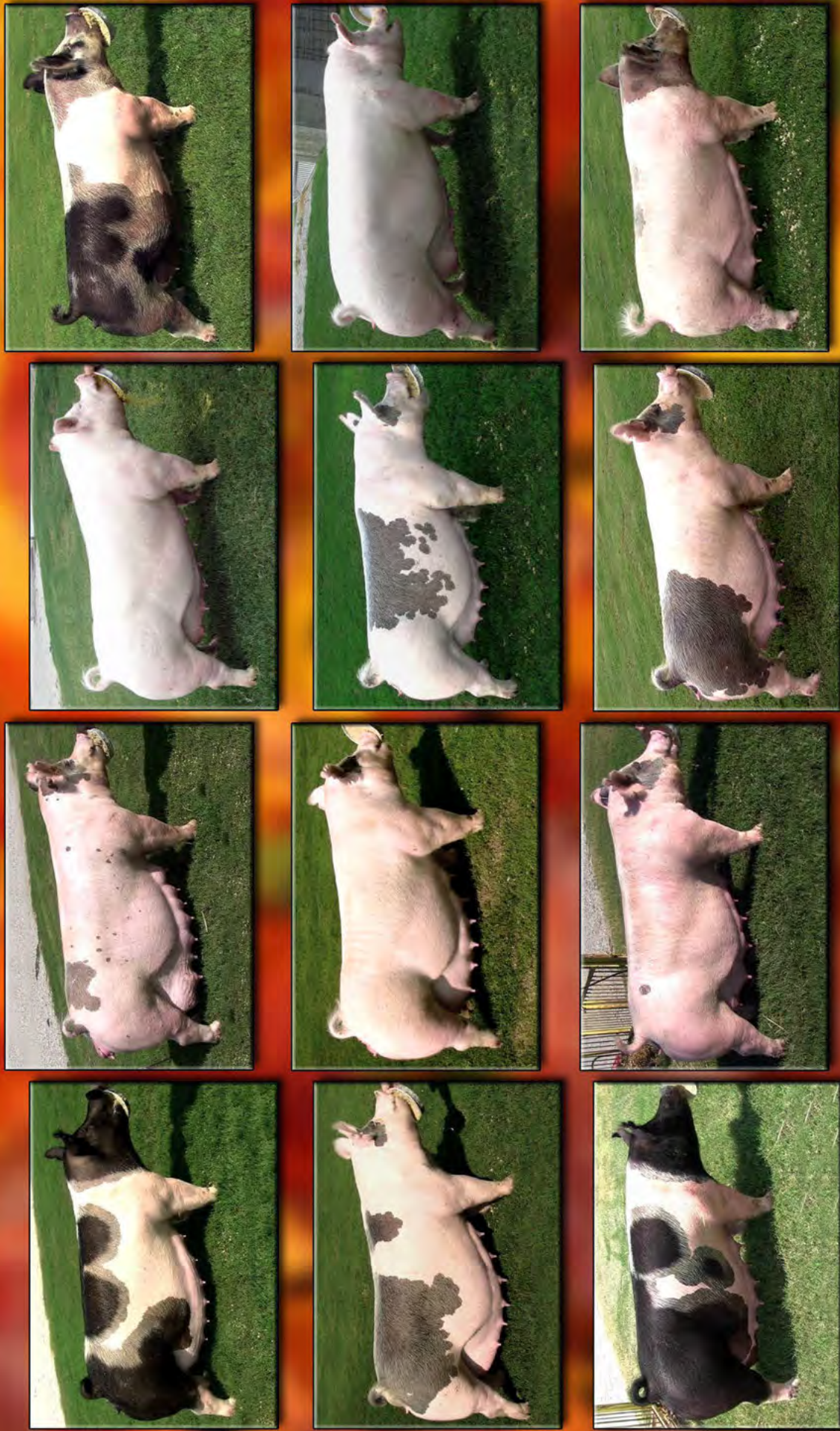
ALL BOARS ARE PRICED AT \$50/DOSE

BBB

TRIPLE B SIRES 410483 E 1160 RD EUFAULA, OK 74432
918-689-3290 918-689-3860 WWW.TRIPLEBSIRES.COM

ARK...THE REASON WHY!!!

Winter Online Bred Female Offering — December 10th



Visit
www.stvecobbfamily.com
for more information.

Steve Cobb & Family 
Office: 870.486.5894 • Steve: 870.219.7281 • Aaron: 870.219.4443 • scobb123@hotmail.com