

Seedstock **EDGE**

m a g a z i n e

The official publication of the National Swine Registry



FEMALE FOCUS ISSUE

DECEMBER 2016

Livestock Live ■ Pick The Winner ■ Common Mission

SHIPLEY

SWINE GENETICS

866.376.8986

8086 Marion Rd., Newark, OH 43055
Cell: 740.404.5048



SHOWPIG & COMMERCIAL SEMEN:

Duroc • Yorkshire
Hampshire • Berkshire
Exotic • Landrace



All of us join in wishing you a

Merry Christmas

and a prosperous New Year.



Designed by
Seedstock
EDGE

**VIEW OUR COMPLETE BOAR LINE-UP AT:
SHIPLEYSWINE.COM**

Mission Statement

"To enhance the value, influence and image of purebred Durocs, Yorkshires, Hampshires and Landrace and to provide an effective medium for National Swine Registry members and swine breeders to promote their product."



Seedstock EDGE (ISSN 1079-7963) is published monthly except bi-monthly in January/February, April/May and October/November by the National Swine Registry (American Yorkshire Club, Hampshire Swine Registry, United Duroc Swine Registry and the American Landrace Association). Subscription rates: (U.S.) \$25/yr., \$60/3 yrs., \$60/yr. 1st class; (Foreign) \$150/yr. Office of Publication is Seedstock EDGE, 2639 Yeager Road, West Lafayette, IN 47906. Phone: 765.463.3594. Printing is by Sutherland Companies, Montezuma, Iowa. Periodicals postage paid at Lafayette, Ind., and at additional mailing offices. All unsolicited articles, letters, photographs and other contributions of any type whatsoever shall become the sole property of Seedstock EDGE, which shall have the sole right to determine whether to publish any such contribution. Seedstock EDGE shall have the right to edit, as it shall in its sole discretion deem appropriate, any such contribution which it publishes. Seedstock EDGE shall have the right to refuse any photos used for promotion and advertising that show evidence of image enhancement and shall have no responsibility or obligation for the return of any such unsolicited contributions.

POSTMASTER: Send address changes to Seedstock EDGE, 2639 Yeager Road, West Lafayette, IN 47906.

Seedstock EDGE Staff

Editorial

Mike Paul

Executive Editor

mike@nationalswine.com

Stephen Weintraut II

Director of Marketing & Communications

steve@nationalswine.com

Ann Fry

Managing Editor

ann@nationalswine.com

Brian Arnold

Vice President of Member Outreach & Youth Development

arnold@nationalswine.com



2639 Yeager Road

West Lafayette, IN 47906

765.463.3594 • 765.497.2959 fax

Ads: seedstockedge@nationalswine.com

General: nsr@nationalswine.com

www.nationalswine.com

Ad Dropout Policy

To maintain the advertising integrity of Seedstock EDGE, the late ad drop policy developed by the NSR Executive Committee will be upheld by the NSR Department of Marketing & Communications. If an advertiser reserves advertising space in Seedstock EDGE, he or she has until three days after the ad deadline to recall the advertising space. If an ad is pulled after that time, the late ad drop policy will apply. On the first occurrence, the advertiser will receive a written explanation of the policy. On any following occurrences, the advertiser will be charged half the cost of the reserved ad space.

NSR STAFF

Office: 765.463.3594

Chief Executive Officer

Mike Paul • Ext. 107

Vice President of Member Outreach & Youth Development

Brian Arnold • Ext. 106

Vice President of Global Technical Service

Dr. Doug Newcom • Ext. 116

Pedigree Department Director & Administrative Assistant

Lisa Kennedy • Ext. 105

Controller

Mindee Pollard • Ext. 108

Director of Marketing & Communications

Stephen Weintraut II • Ext. 118

Managing Editor

Ann Fry • Ext. 113

Director of Junior Activities

Kaley Bontrager • Ext. 109

Junior Activities Coordinator

Ellen Olson Knauth • Ext. 101

Yorkshire Secretary

Whitney Hendricks • Ext. 112

DNA Secretary

Whitney Webb • Ext. 102

Duroc Secretary

Taran Hopper • Ext. 120

Hampshire/Landrace Secretary & Junior Program Assistant

Megan Frank • Ext. 100

Software Developer

Nicholas Weller • Ext. 104

Field Representative

Michael Lackey • 765.427.3733

Field Representative

Blaine Evans • 765.490.3731

Field Representative

Mickey Bellamy • 765.427.7741

BOARD OF DIRECTORS

NSR EXECUTIVE COMMITTEE

• Chairman

Scott Lawrence, Ind. | 260.564.0595

• Vice Chairman

Dusty Cain, Iowa | 641.203.2257

• Brett Beyers, Ill. | 815.848.3549

• Garry Childs, Ga. | 229.378.0749

• Wayne Huinker, Iowa | 563.380.1372

• Ron Iverson, Iowa | 641.236.3713

• Cody McCleery, Texas | 817.613.6666

• Jim McCoy, Ohio | 740.572.0271

• Bill Range, Ill. | 618.973.1070

• Dr. Mike Tripp, Okla. | 580.513.0723

DUROC

• President

Steve Rodibaugh, Ind. | Term Expires 2017*

• Vice President

Don R. Smith, Ohio | Term Expires 2017

• John Huinker, Iowa | Term Expires 2017*

• Joe Roberts, Mo. | Term Expires 2018*

• Brett Beyers, Ill. | Term Expires 2016

• Ron Nelson, S.D. | Term Expires 2016*

• Bill Range, Ill. | Term Expires 2016*

*denotes second term

HAMPSHIRE

• President

Dusty Cain, Iowa | Term Expires 2018*

• Vice President

Jesse Heimer, Mo. | Term Expires 2016*

• Jim McCoy, Ohio | Term Expires 2016

• Jay Winter, Texas | Term Expires 2016*

• Brad Mortensen, Mich. | Term Expires 2017

• Mike Watson, Ind. | Term Expires 2017

• Kevin Wendt, Ohio | Term Expires 2017

*denotes second term

LANDRACE

• President

Lynsee Shaffer-Pullen, Ind. | Term Expires 2016

• Vice President

Valerie Duttlinger, Ind. | Term Expires 2017

• Chris Compart, Minn. | Term Expires 2017*

• Mike Grohmann, Ill. | Term Expires 2016*

• Sam Malcolm, Ind. | Term Expires 2018

• Nick Siedelmann, Iowa | Term Expires 2018

• Lance Westcamp, Ohio | Term Expires 2016*

*denotes second term

YORKSHIRE

• President

Garry Childs, Ga. | Term Expires 2017*

• Vice President

Dr. Mike Tripp, Okla. | Term Expires 2018*

• Dan Burzlaff, Iowa | Term Expires 2018*

• Tracy Lorenzen, Ill. | Term Expires 2016*

• Matt Rohrig, Iowa | Term Expires 2016

• Brady Crone, Ind. | Term Expires 2017*

• Broc Thompson, Ohio | Term Expires 2017

*denotes second term

Features



**Livestock Like
You've Never Seen..... 20**
by Ann Fry



**2017 National
Picture Judging Contest 25**



New York State of Mind..... 34
by Laura Kwilos

Editorial

Open Mike 10
by Mike Paul

Youth View..... 12
by Kaley Bontrager

Fueling Creativity 14
by Stephen Weintraut II

FYI..... 16

Columns

AgCareers.com Advice 13

Industry Insights..... 15

Through The Years 77

Form To Function 79
by Wayne Huinker

Reference

Seedstock Source..... 53

**Seedstock EDGE
Subscription Form..... 61**

Datebook 78

Index to Advertisers 80

Shows & Sales

NJSA Eastern Regional 38

Georgia National Fair 42

Kansas State Fair Jr. Show 43

Keystone International Livestock Exposition 44

Cow Palace Grand National 45

State Fair of Texas 46

Schedules

NSR Fall Classic..... 48

Arizona National 48

NSR Winter Type Conference/NJSA Southeast Regional..... 49

NSR Southwest Type Conference..... 50

On the Cover

Brenna Mortensen topped the barrow show with her Champion Yorkshire Barrow at the 2016 NJSA Eastern Regional in Hamburg, New York.

Photo by In the Country Photography - Rene Zundel.



POWER PACKED

Hampshire Boars



HERE I AM

Outlaw x Revolution

Bred by Shaffer's Goldrush



OUTLAW

Trouble Maker x Capital Investment

Bred by Harveys



THE GAME

Harbaugh x Sock Em

Bred by Joostberns



EYE CANDY

All Eyes x Back Home

Bred by Kilmers



CONTENDER

Fugitive x Wimbledon

Bred by Shaffer's Goldrush



CRIMINAL

Outlaw x Pivot Point

Bred by Harveys



SHAFFER'S GOLDRUSH

888.690.2022

shaffergoldrush.com

To view our powerful boar line up, visit our website or call!

Terry 765.730.1031 :: Aimee 765.730.1666 :: Lynsee 765.717.9924

Bradley 765.414.7485 :: Delbert 765.729.5227

WINTER SAVINGS

UP TO
70% OFF!

ONLINE BRED GILT SALE

Tuesday DECEMBER 13TH Showpig.com

HOT HEAD

HOT ROUTE X OUTTA HAND

Bred by Wintex Farms, TX



SLUG

SHOCKWAVE X BEAR

Bred by Steve & Aaron Cobb, AR



BOAR STUD 419-335-0890
BEN 419-583-7507
JEREMY LIPPS 937-459-7386
ANDREW 419-572-0531
BOAR STUD: 2235 County Road 17 Wauseon, OH 43567

follow us on facebook 
TOM MOYER & FAMILY SHOWPIGS/GENETIC EDGE BOAR STUD

December 2016

MOYER
genetic edge

SEEDSTOCK EDGE • 7



Bear Claw



Zoned In



New Direction



Merry Christmas

Thank you for your business in 2016, and we look forward to working with you in 2017.

Robin Ridge farms

MIKE FAGG

Clay City, IN 47841

(c) 812.249.2851

RobinRidgeFarms.com

We will have females bred to these great boars for 2017 litters.



SUNGLO PREMIUM

Starter Program

PREMIUM performance made by **YOU** or at **YOUR LOCAL MILL**

	STAGE 1 (FOR PIGS WEIGHING 18-50LBS.)	STAGE 2 (FOR PIGS WEIGHING 18-75LBS.)	STAGE 3 (FOR PIGS WEIGHING 50-100LBS.)
CORN (7.0%).....	678	801	976
SOYBEAN MEAL (47.5%).....	458	335	435
STEAMED ROLLED OATS.....	150	150	100
SUNGLO STARTER BASE 650	650	650	325
SUNGLO SHOW BASE.....	-	-	100
LIQUAFAT.....	44	44	44

**COST SAVINGS WITHOUT
SACRIFICING PERFORMANCE**

**FOLLOWS PRE-STARTER
(1/2 - 1 BAG PER LITTER)**

**ALLOWS FLEXIBILITY
FROM A VFD STANDPOINT**

*Diets contain maximum levels of copper for best performance. Do not add additional copper.
This base allows you to use Sunglo® Starter program in meal form.*



WWW.SUNGLOFEEDS.COM



Open Mike

Your NSR team

Many times it is easy to overlook the people who provide services to you, the member of the National Swine Registry (NSR). It is important all NSR members have the opportunity to know the roles of our team, as I feel we have the best staff in the purebred livestock business. I am proud to present the members of your NSR team:

Brian Arnold, Vice President of Member Outreach & Youth Development – Brian oversees our Shows and Sales department, the National Junior Swine Association (NJSA) and the Marketing & Communications Department. Brian is responsible for the management of NSR shows and sales and oversees the regional and national events for NJSA.

Dr. Doug Newcom, Vice President of Global Technical Service – Doug is responsible for the development of programs that assist our members in genetic improvement and oversees the technical services department. Doug travels globally to assist in the development of foreign markets with the America's Best Genetics (ABG) program.

Lisa Kennedy, Pedigree Department Director and Administrative Assistant – Lisa oversees the activities of the pedigree department. Lisa is in charge of the travel arrangements for NSR events, including shows and sales. She coordinates the scheduling of meetings for the NSR Executive Committee and the breed boards. Lisa does the majority of the entry work for NSR shows and serves as the clerk at NSR sales.

Mindee Pollard, Contoller – Mindee oversees the accounting programs at the NSR. She works with each department in developing financial reports to assist them in making sound, financial decisions.

Taran Hopper, Duroc Secretary – Taran is responsible for handling Duroc registrations and transfers. She serves as the front desk receptionist and assists in manning the phones at NSR.

Whitney Hendricks, Yorkshire Secretary – Whitney is responsible for handling Yorkshire registrations and transfers. Whitney also travels to all NSR shows and sales and assists with check in and preparing the show and sale catalogs. Whitney assists in manning the phones at NSR.

Megan Frank, Hampshire/Landrace Secretary and Junior Program Assistant – Megan is responsible for handling the Hampshire and Landrace registrations and transfers. Megan travels to NJSA events and prepares the catalogs for NJSA shows. Megan assists in manning the phones at NSR.

Whitney Webb, DNA Secretary – Whitney assists NSR members and staff in all facets of DNA testing. Whitney also serves as the data information entry person for breeders submitting performance records.

Nicholas Weller, Software Developer – Nicholas collaborates with the various departments within NSR to develop web-based and server-based applications to meet the diverse needs of the NSR. Nicholas works in conjunction with the Genetics & Technology staff to evaluate future programming needs for NSR and its members.

Kaley Bontrager, Director of Junior Activities – Kaley oversees the NJSA, the nation's largest youth livestock association with more than 13,000 members. She is responsible for different leadership conferences offered throughout the year by NJSA. Kaley takes an active part in planning the NJSA regional shows along with the World Pork Expo and National Junior Summer Spectacular (NJSS).

Ellen Knauth, Junior Activities Coordinator – Ellen works with the Director of Junior Activities to organize and implement the events of the NJSA. Ellen leads the planning and coordination of the four regional shows, the World Pork Expo and NJSS. She also assists with other NJSA affiliate events like the North American International Livestock Expo, the American Royal and Arizona National.

Stephen Weintraut II, Director of Marketing & Communications Department – Steve is responsible for the long range planning and implementation of programs within the department. This includes the production of the *Seedstock EDGE* and the increasing online presence through the NSR website. Steve assists members in the production of catalogs and other promotional items.

Ann Fry, Managing Editor – Ann's responsibilities include serving as the advertising coordinator, writing feature articles for the *Seedstock EDGE*, compiling show and sale reports, taking photographs and assisting advertisers and clients with their advertising needs. Ann travels to NSR events and assists in getting show and sale information and photos online.

Cassie Godwin, Social Media Coordinator & Assistant Editor – Cassie is the newest member of the NSR team and started Nov. 9. She will jump right into the mix by traveling to the Fall Classic. Cassie will assist in the production of the *Seedstock EDGE* and will also focus on providing a social media platform for the NSR.

Blaine Evans, Eastern Field Representative – Blaine makes herd visits to NSR/NJSA members in the eastern part of the U.S. promoting purebred swine. Blaine works as a ringman at all NSR shows and sales, as well at several of the state fairs. Blaine assists with several NJSA events and NJSA-affiliated shows. Blaine is available for genetic consultation for NSR/NJSA members.

Michael Lackey, Northwest Field Representative – Michael makes herd visits to NSR/NJSA members in the Northwestern parts of the U.S. promoting purebred swine. Michael assists with several of the regional NJSA events and works as a ringman at all NSR shows and sales. Michael works the Midwestern State Fairs as a ringman and is available for genetic consultation for NSR/NJSA members in the Northwest.

Mick Bellamy, Southwest Field Representative – Mick promotes purebred swine to NSR/NJSA members in Southwest parts of the U.S. Mick works with NJSA at several regional events and attends all NSR/NJSA national events working as a ringman. Mick is available for genetic consultation for NSR/NJSA members in the Southwest states.

Give them a cal. They will be glad to assist you!

Mike Paul



GENETICALLY SUPERIOR SEEDSTOCK

ONLINE BRED GILT SALE

WEDNESDAY • OLSENYORKS.COM

DECEMBER 7, 2016

Offering 40 head of Yorkshires, Durocs and crossbreds due in January and February. Cooperative delivery available.



Every gilt due to farrow in January and February will be offered! None held back!



Thank you for offering up the 281 litter bred gilt in December 2014. She was the mother of my son, Dalton's, Grand Champion 4-H Yorkshire Market Hog at the Iowa State Fair. She has weaned 44 pigs in three litters and always breeds back on the first attempt. She's headed to the crate with another large litter it appears. Very pleased with this one, and she's definitely a 'pet' around our place.

Thanks again,
Brian Konz

OFFICE: 605.327.3285 • CHUCK: 605.661.7864 • BEN: 605.660.2828
29369 451st Ave., Irene, SD 57037

WWW.OLSENYORKS.COM

Visit our website for more details and pictures of all our boars.



Youth View

Thankful for volunteers

With Thanksgiving rapidly approaching, I started thinking about all the wonderful things in my life I am thankful for, and a recent situation popped into my head. My friend, Sarah, is an event planner in Chicago, and my best friend, Krystin, was telling me how she was going to take time off work to volunteer at Sarah's event. I was so impressed! I kept telling Krystin it was so important she was volunteering and how nice it is to have your friends volunteer at your events. Not only is it one less person you have to call, but it's also someone you know will be a great asset to your event. Krystin didn't feel as though it was a big deal, but I can guarantee Sarah was glad to have her there. It was in that moment I realized just how thankful I am for all volunteers, because it's volunteers who make the National Junior Swine Association (NJSA) work, and I cannot stress that enough.

The number of volunteers we need at each show varies, with some shows obviously needing more than others. Take the National Junior Summer Spectacular (NJSS), for example. The biggest and most important task to prepare for this event ahead of time is contacting volunteers. We need volunteers to work the booth, listen to speeches, be group leaders in the judging contest and facilitators for the skillathon. For the skillathon alone we need 60 volunteers to help for more than three hours, if we want to get all the participants through and the show started on time. Without your assistance the NJSS would be nothing more than a pig show, but because of you, we are able to offer our members much more.

There are several people who come to help at every show who other people might not realize are volunteers. These volunteers include people in the check-in line, the junior board working the ring, announcers who keep the show running, people writing class checks and the person running the scales. They are all volunteers. Regardless of the role you play in the show, if you are there volunteering, you are a vital part of the event.

We know it's not always fun to give up your time, but your willingness to volunteer makes our events happen. You make events happen for kids who are so passionate about the swine industry they want to be part of every educational contest the NJSA offers. You make events happen for kids who want to learn about all aspects of the swine industry. You make events happen for kids who are pushing themselves out of their comfort zones to make themselves better. You make the events happen, and I don't think you all realize quite the impact you have.

For those of you that volunteer, please know our shows couldn't happen without you. Whether it's working the NJSA booth, listening to speeches, facilitating skillathon, being a group leader for the judging contest or helping organize the silent auction, we value every single one of you! Thank you for your time.

"Regardless of the role you play in the show, if you are there volunteering, you are a vital part of the event."

Kaley S. Bontrager



To contact Kaley, use your smartphone to scan the code above or email her at kaley@nationalswine.com.

AgCareers.com, the leading supplier of human resource services to the agriculture and food industry, has partnered with the *Seedstock EDGE* to bring you valuable tips to help with your career search, as well as the latest job listings in our industry.

Fifty-eight career profiles in seven different agricultural pathways can be found at:
www.agcareers.com/career-profiles/

Career **PROFILE**

By Bonnie Johnson, Marketing Associate, *AgCareers.com*

Women in ag: gender roles and equality

AgCareers.com examined the roles men and women play in the agricultural industry by conducting the Gender Roles & Equality in Agribusiness survey. Responses analyzed from more than 2,000 people revealed some interesting associations between gender and equality in agribusiness.

ON THE RIGHT TRACK

It appears the ag industry as a whole is on the right track, since both men and women felt there was a higher level of gender equality in agribusiness than in the overall professional world. More than 80 percent of both genders felt the attitude toward women working in agribusiness had changed for the better in the past ten years.

Women responding to the survey were more confident about their ability to advance in agriculture than in other industries. Eighty-eight percent of women felt optimistic about their possibility to advance in the ag industry, while only 56 percent were optimistic outside the ag industry. The research shows women are looking for advancement opportunities and aspire to move up within the ranks. A significantly higher percentage of women than men in the survey aspired to move up to a higher level position, one day.

Promotion of the agricultural industry is strong; more than 90 percent of respondents said they frequently advocate for the ag industry. Women felt advocacy was one of the top three skills or characteristics they bring to the industry.

Mentorship may have a role in increasing advocacy, focusing on the positive aspects of the ag industry and encouraging involvement. Women in the survey reported having more male mentors than female mentors. Mentoring programs help build on employees' skill sets and develop future leaders. Partnering accomplished female leaders with young women is a way to foster a workplace culture that focuses on gender equality.

ROOM FOR IMPROVEMENT

Survey responses also highlighted a few areas where the agricultural industry can work to address gender inequality. Men felt more respected in the agricultural workplace than females. Half of women said they had experienced discrimination based on their gender in the workplace. Responses also indicate a disparity in pay between genders, with men typically earning more. There was also a difference in employment levels, with more men in higher level roles. More than 70 percent of women felt outnumbered by men in agribusiness.

For additional details, download the full Gender Roles & Equality in Agribusiness Report at www.AgCareers.com under Market Research.

Job Opportunities

FINISHING FARM MANAGER
Smithfield Hog Production Division
Kelly, North Carolina
<https://goo.gl/F3cMd0>



ACCOUNTS RECEIVABLE CLERK
Iowa Select Farms
West Des Moines, Iowa
<https://goo.gl/B0djG8>



QUALITY ASSURANCE REPRESENTATIVE
Elanco
Winslow, Maine
<https://goo.gl/ylygcD>





Fueling Creativity The Most Wonderful Time of Year

A Charlie Brown Christmas, National Lampoon's Christmas Vacation, Elf and Home Alone – these are my Matthew, Mark, Luke and John when it comes to the Christmas season. Nothing brings me more joy than to be sitting with my feet up watching the classics I know and love, year after year. Unlike me, they never get old and look good every time you see them.

As you may have figured out, the Christmas season is my favorite time of year. It gives me a chance to be with family and friends, give thanks for the past year and hope for the next. I may get a bit nostalgic during the season. To tell the truth, in my mind, the memories I had as a child come to mind whenever my wife, Wendy, and I do something unique to Christmas, such as cutting down the tree or decorating the outside of the house with lights. I never have understood how, for some people, the holidays can be depressing. I admit I probably get a bit too enthusiastic about the season, but I enjoy spreading Christmas cheer wherever I go.

The business of Christmas

You have probably heard someone say Christmas has become too commercialized, over the years, and the real meaning has been lost. There is much truth to that statement; Christmas is commercialized. Just look at how retailers have their holiday season products on the shelves earlier and earlier every year. Heck, I can buy my Halloween outfit in one aisle and my Christmas tree ornaments in the next.

All of that may be happening right now as I write this, but I want to go on record to say there is an appropriate way, in my opinion, you can, and should, use Christmas to help your business. I would suggest you take the season to thank the people who make it possible for you to do what you do – your customers.

I think it is perfectly acceptable to use the holiday season at the end of the year to let your customers know how thankful you are for their business. Examples of this may be to thank them in a print advertisement, be it the entire ad or a nice message somewhere in an ad thanking them for supporting your business. Another example might be to send out Christmas cards to everyone you have done business with the past year. I don't care who you are, everyone enjoys receiving a card in the mail that just lets them know you appreciate their business and hope they will continue to support you in the coming year. You can also do this through Facebook and social media by posting that same thank you and a picture of your work family or actual family.

It all comes down to letting your customers know you do what you do not just for the income, but to also help your customers succeed and the sense of satisfaction that comes with that.

Wishing you and your family a
Merry Christmas
and a
Happy New Year!

"I admit I probably get a bit too enthusiastic about the season, but I enjoy spreading Christmas cheer wherever I go."



To contact Steve, use your smartphone to scan the code above or email him at steve@nationalswine.com.

This space is reserved for industry experts weighing in on important topics that affect the entire swine industry.

INDUSTRY

INSIGHTS

New antibiotic regulations almost here

By Mike King :: Director of Science Communications, National Pork Board

The countdown clock on the U.S. Food and Drug Administration (FDA)'s new antibiotic regulations has been ticking for quite some time, and it's getting closer to showing all zeroes as Jan. 1 nears. That means your time to prepare is nearly over, and the time for compliance is just about to begin.

VFDS AND VCPRS

Hopefully, you have heard about veterinary feed directives (VFDs) and veterinary-client-patient relationships (VCPRs) by now. Quite simply, you can't get the former without the latter. Fortunately, most of you have a VCPR already, even if you don't realize it. VCPRs are defined by states, so check out pork.org/antibiotics under the FDA tab. Don't have a vet? The Checkoff's Antibiotic Resource Center can also help you find one.

"It all starts with pork producers and swine exhibitors having a VCPR," says Lisa Becton, DVM, director of swine health and information for the Pork Checkoff. "By maintaining this relationship with your herd veterinarian, you can get a VFD when medically necessary or a prescription for water medication."

Yes, the new FDA regulations also affect how you can get many water medications for your pigs as well. These will now require a veterinary prescription starting in January. It's technically different from a VFD, which is only for feed medications. (For a complete list of all affected antibiotics, go to Checkoff's Antibiotic Resource Center under the FDA tab.)

For sure, the biggest change for those involved with youth swine shows will relate to feed. So, the feed that has always performed well for your showpigs may still carry the same name, but may not include antibiotics as they have in the

past. Unless you have a VFD from your veterinarian, you will not be able to purchase any feed or premix with specific antibiotics for disease prevention, control or treatment.

Becton adds, "Because a medicated feed purchase will have to match a specific VFD, feed stores may not keep a supply of what you have typically bought before. So, you will have to think ahead, work with your veterinarian and order the appropriate feed before it's immediately needed."

Injectable medications, however, are not affected by the new FDA regulations. The current rules on those will still apply in January.

PIG FARMERS LEADING THE WAY

The primary driver of the FDA regulations is the attempt to reduce antibiotic resistance. The National Pork Board (NPB) is leading this conversation to combat antibiotic-resistant bacteria and preserve the responsible, on-farm use of antibiotics in pork production.

"We were the first food animal industry to announce our stewardship plan, which underscores that antibiotics are essential tools for veterinarians and farmers to raise healthy livestock and produce safe food," says Jan Archer, NPB president and a pig farmer from North Carolina. "We understand the important role pig farmers of all types play in delivering safe food. We are committed to defining the ideal balance of the right medicine, in the right dose, at the right time for our pigs."

For all of the latest resources available from the Pork Checkoff's Antibiotics Resource Center, visit pork.org/antibiotics.

For Your Information

Keeping you connected with the recent news in the purebred swine industry.

Seedstock *EDGE* Advertising Deadlines

Advertising deadlines for upcoming issues of *Seedstock EDGE* are as follows:

JANUARY ISSUE
Ad copy due Dec. 2

***NEW* FEBRUARY/MARCH
SPRING SHOWPIG ISSUE**
Ad copy due Jan. 18

APRIL/May ISSUE
Ad copy due March 22

Bound issues for sale

Bound issues of the *Seedstock EDGE* are available for \$25. Call the NSR office at 765.463.3594 for year availability and to purchase one.

Seedstock **EDGE** m a g a z i n e



any closer and you'd be

RINGSIDE

DON'T MISS ONE ISSUE!

Seedstock EDGE is the premier publication of the purebred swine industry.

Subscribe or renew online today!

www.nationalswine.com/seedstockEDGE/subscribe.php

NSR News



Holidays for the National Swine Registry

The NSR office will be closed on Nov. 24-25, Dec. 23, Dec. 26-27 and Jan. 2, for the holidays.

Spring Showpig Issue

The *Seedstock EDGE* 2017 Spring Showpig issue will be the February/March issue. The ad deadline will be Jan. 18, 2017, and the magazine will mail Feb. 13, 2017. For questions or to reserve ad space, call 765.463.3594.

Weblinks on NSR blog

Breeders will now have the option for their website to be hyperlinked on the National Swine Registry (NSR) show results blog, if an animal they raise is included in the blog post. The fee is \$200 for the year. For questions or to sign up, call 765.463.3594.

Obituaries

Robert L. Einfeldt



Robert Einfeldt
1933-2016

Robert L. (Bob) Einfeldt, 83, of Durant, Iowa, died Sept. 22, at the Wilton Retirement Community, in Wilton, Iowa.

Visitation was held Sept. 25, at St. Mary's Catholic Church, in Wilton. Mass of Christian burial was held Sept. 26. Interment took place at Oakdale Cemetery, in Wilton. Memorials may be made to Muscatine County Fair Swine Department or Muscatine County 4-H, in his memory. Online condolences and remembrances may be left

at www.bentleyfuneralhome.com.

Einfeldt was born to Harry E. and Alvena C. (Harder) Einfeldt, in Wilton, on March 26, 1933. He graduated from Wilton High School, in 1950.

Einfeldt married Dolores M. Kook on Nov. 22, 1951, in Wilton. She preceded him in death on Aug. 13, 2015. They had eight children during their 63 years of marriage.

He was a member of St. Mary's Catholic Church, in Wilton, Muscatine County Pork Producers and the Muscatine County Farm Bureau. In 1967, Einfeldt was named Outstanding Farmer of the Year. He was an honorary member of the Muscatine County Fair Board, and for 30 years he served as a 4-H leader for the Wilton Hustlers

UPCOMING SHOW DATES & DEADLINES

ARIZONA NATIONAL

The event will be held in Phoenix, Arizona, on Dec. 27-Jan. 1. For a full schedule see page 48.

WINTER TYPE CONFERENCE

The Winter Type Conference will once again be held at the Georgia National Fairgrounds and Agricenter in Perry, Georgia, in conjunction with the NJSA Southeast Regional. The open show and sale will take place on Jan. 28. Entries are due by Dec. 15. The entry form and show rules and regulations may be found online at nationalswine.com.

SOUTHEAST REGIONAL

The Southeast Regional will be held in Perry, Georgia, from Jan. 25-29, in conjunction with the Winter Type Conference. All entries must be owned by Dec. 1 and entered online by Dec. 15. A schedule of events can be found on page 49, and the most up-to-date rules and regulations as well as an entry form can be found on nationalswine.com.

REMINDER!

All litters must be recorded and transferred before Dec. 1 to be eligible for the Texas majors.

To submit announcements for FYI, contact Ann Fry at ann@nationalswine.com

Club. He participated in many local and state fairs and national hog shows. Einfeldt showed purebred hogs for 65 consecutive years at the Iowa State Fair.

He is survived and remembered by his daughters, Cindy (Steve) Young, of Durant, Rita (Mark) Mays, of Wilton, Mary (Ron) Kiser and Jeannine (Joel) Meincke, of Durant; his sons, Jim (Wanda) Einfeldt and Chuck (Karen)

Einfeldt, of Durant; 24 grandchildren; 35 great-grandchildren; his brother, Wayne (Eva) Einfeldt, of Wilton; and his sister, Marian Kent, of Moline.

He was preceded in death by his parents; his wife; his sons, Robert Jr. and William Einfeldt; his brothers, Leo and Harry Jr. Einfeldt; and his sister, Evelyn Johnson.

Hugh Olson



Hugh Olson
1935-2016

Hugh Westfield Olson, 81, of Beardstown, Illinois, died Oct. 3, at his home.

He was born Jan. 11, 1935, in Youngstown, Ohio, the son of Stanley Hugh and Leon Westfield Olson.

He married Jean Rasmussen on Sept. 1, 1956, in Montclair, New Jersey.

He is survived by his wife, Jean Olson, of Beardstown; two daughters, Lynda J. Olson and Chris (husband, Brad) Allen, both of Beardstown; two sons, Jeff Olson of Burlington, Iowa, and Ty (wife Terri) Olson of Beardstown; seven grandchildren, Bre (husband, Josh) Stocker, of Beardstown, Derek (wife, Stacy) Olson, of Navarre, Florida, Drew (wife, Kelly) Olson, of Clyde, Ohio, Raegan Olson, of Burlington, Iowa, Ande and William DeSollar, of Beardstown, and Lex Smith of Beardstown; and four great-grandchildren, Gabe Olson, Kyle Sargent and Kaiden and Brayden Olson.

He was preceded in death by his parents and his sister, Jackie (husband, Donald) Smart.

Olson graduated high school from Waukesha, Wisconsin, class of 1953. He served eight years in the U.S. Naval Reserves while attending college, where he earned his bachelor's degree in agriculture economics and education three years at University of Wisconsin. His final year was spent at University of Cal-Davis. He taught agriculture and biology in Lake Mills, Wisconsin, which led him to his career as head buyer for Oscar Mayer. In 1968, Olson

moved his family to Beardstown as the promotion manager for Oscar Mayer. He then started his own business raising purebred swine seedstock, until he retired. While raising hogs, he was also an educator for five years at Beardstown High School teaching agriculture.

Olson was very involved in the communities in which he lived. He was a member of the Jay Cee's in Wisconsin, Rotary Club where he served as president, Beardstown Elks Lodge #1007, Beardstown Little League Board, Cass County Fair Board, President of Illinois Duroc Breeders Association, First United Methodist Church and Emmaus. His church was very important to him, and he enjoyed serving wherever he was needed. Olson's family was his life. During his younger years you could find the family taking off in the summer and traveling from campsite to campsite in the family truck camper crossing the U.S. and Canada. He had a passion for animals and was known as Dr. Doolittle. People often heard him discussing how to breed a better hog. From riding his horses, selling goats, raising hogs and providing the annual nativity scene in town, animals played a huge role in his life. He will be greatly missed by all.

Memorial services were held Oct. 8, at First United Methodist Church in Beardstown, with Reverend Robert Schoolcraft officiating.

Memorials have been suggested to Cass/Schuyler Area Hospice, Tiger Nation, Beardstown Bread of Love or PAWS.

Condolences may be left online at www.colwellmemorialhome.com or on Facebook at Colwell Memorial Home.

BAADE-PENNER

Online Bred Female Sale

Tuesday, Dec. 6, 2016 Showpig.com

Offering an elite set of Hampshire, Yorkshire, Duroc and Crossbred females due in January and February.

Designed by
Seedstock
EDGE



TRIPLE THREAT
Hampshire Service Sire



35 TO LIFE
Duroc Service Sire



MOJO
Crossbred Service Sire



BEAR CUB
Crossbred Service Sire



SKY HIGH
Crossbred Service Sire



PINNACLE
Crossbred Service Sire

58135 722nd Rd., Plymouth, NE 68424



Kyle Baade :: 402.239.2229

John Penner :: 402.223.7108

BAADEGENETICS.COM

Est. 2013



From all of us at the
National Swine Registry



&



HAPPY NEW YEAR



Mike Paul
Chief Executive
Officer



Dr. Doug Newcom
V.P. of Global
Technical Service



Brian Arnold
V.P. of Member
Outreach & Youth
Development



Lisa Kennedy
Pedigree Dept. Director
& Administrative Asst.



Mindee Pollard
Controller



Nicholas Weller
Software Developer



Stephen Weintraut II
Director of Marketing
& Communications



Ann Fry
Managing Editor



Cassie Godwin
Social Media Coordinator
& Assistant Editor



Kaley Bontrager
Director of
Junior Activities



Ellen Knauth
Junior Activities
Coordinator



Whitney Hendricks
Yorkshire Secretary



Whitney Webb
DNA Secretary



Taran Hopper
Duroc Secretary



Megan Frank
Hampshire/Landrace
Secretary &
Junior Program Asst.



Michael Lackey
Northwest Field
Representative



Mick Bellamy
Southwest Field
Representative



Blaine Evans
Eastern Field
Representative

FEATURE

Livestock

LIKE
YOU'VE
NEVER
SEEN

By Ann Fry

Walton Webcasting averages 175 webcasts per year, which includes anything from weddings to sports to livestock. They have webcasted events including the Tulsa State Fair, San Antonio Livestock Show, World Pork Expo and boar stud open houses.



Driving down county road 900 S. in Walton, Indiana, most people wouldn't think twice about the brick house with the gray pole barn in the side yard. But, if you stopped by, you would learn it is the headquarters of Walton Webcasting, the company bringing people in the industry livestock like they've never seen before.

What started as a simple desire to do something more for the local sports team quickly turned into a full-fledged business for owners Grant and Suzanne Davis. For 19 years, Grant was a sports radio play-by-play broadcaster for the local radio station, but he wanted to do more. So, in 2012, the Davises began video webcasting local sporting events.

Webcasting livestock was never in the original business plan. However, in their second year of operation, the Cass County 4-H Fair, in Indiana, asked Grant to video webcast some events for them, including the supreme showmanship contest. Kyle Pullen of Walton, Indiana, was one of the announcers for the webcast. When the contest was over, he told Grant and Suzanne they needed

to start video webcasting livestock shows. Pullen connected the couple with Travis Platt, in Indiana, and they ended up webcasting his first Platt Invitational Jackpot show, in October of that year. More than one thousand people watched the webcast, and Grant knew they were on to something.

Grant credits Pullen and Platt for helping Walton Webcasting get started in the livestock industry and giving their business the momentum to keep moving forward. The business that started video webcasting sports and community events in Walton, Indiana, has now traveled from Ohio to Texas. They have webcasted livestock events including the Tulsa State Fair, San Antonio Livestock Show, National Swine Registry (NSR) shows and boar stud open houses. They average 175 webcasts per year, which includes anything from weddings to sports to livestock. In addition to the live webcasting, the company also produces 100 commercials or videos a year for businesses, farms and organizations.

"I would like to think the variety and number of events we do now is a reflection of our quality

Grant Davis (left) runs the camera during the 2015 World Pork Expo Jr. National crossbred gilt show while Ed Tice (center) and James Backman (right) add commentary to the webcast.



FEATURE

of work and the quality of people I have working for me,” Grant says.

Having a team of good people is a lesson Grant learned from a former boss. He taught Grant you can't be the guy who knows it all. Instead, you must work with smarter and more talented people than yourself. Your job is to make sure the unit sticks together, and if you lead them well you will be successful.

It wasn't hard for Grant to surround himself with quality people, when it came to Walton Webcasting. Grant says it is just a couple of families working hard to make the best possible productions they can. Kyle and Lynsee Pullen and Terry Shaffer work together to run the sales portion of the business. Grant's wife, Suzanne, runs the day-to-day operations of the company and tries to keep Grant in check.

The Davis children pitch in when needed, as well. Their oldest son, Grady, produces many of the shows, especially the sporting events. Although their kids didn't grow up showing livestock, working with Walton Webcasting has taught them a few of the same lessons learned in the show ring.

“Grady is learning to have responsibility for something people are watching, and paying sponsors want the best production possible,” Grant says. “I compare his work to that of a child raising an animal. He has to make sure everything is right and ready to go before the cameras come on, just as a showman would do before entering the ring.”

Much like raising livestock, the Davises have learned starting a business from scratch is hard work. As they have gone on this adventure, Grant has kept in mind some advice he received from his boss at his first job as an 18-year-old kid. He told Grant to never stop filling his tool box with tools. Whether it is your trained skill or something you pick up from other projects, always be learning something new.

Owning Walton Webcasting has given Grant plenty of chances to learn something new. The most challenging part of their business is keeping up with changing technology. People watching the webcast are used

Grant Davis started Walton Webcasting, in 2012, as a result of wanting to do something more with the local sports team.



“I would like to think the variety and number of events we do now is a reflection of our quality of work and the quality of people I have working for me.”

— Grant Davis

to watching productions from companies like ESPN who have the latest of everything and an army of workers. Walton Webcasting does the best they can to produce a quality webcast, but they are a small operation with only a handful of workers to run the show.

In an industry of constant change, Grant thinks the one thing that will always stay the same is the demand for the best quality production. In his opinion, livestock webcasting has gone from just watching kids show their animals and breeders seeing results to another form of entertainment. This leaves the future wide open for Walton Webcasting.

As challenging as the business is, Grant continues to load up the webcasting equipment and travel down the road because he loves to entertain. His goal is to put a smile on someone's face, whether in the seats at the show or the recliner at home. Grant enjoys anytime he hears someone telling him they couldn't be at a show, but because of Walton Webcasting, they felt like they were there.

“One of my favorite memories was from an Indiana Junior Swine Circuit (IJSC) show in Lebanon, Indiana, and

Annie Grinstead made an appearance to thank everyone for their support during her battle with cancer. She mentioned she hated missing shows, but through Walton Webcasting she was able to watch her showpig family show. It meant the world to me to be able to make her world a little bit more normal in her time of fighting,” Grant says.

Grant and Suzanne are learning what it means to be members of the showpig family. Neither of them are livestock people – although Grant now knows how to AI a gilt – but the showpig world welcomed them with open arms anyway. The support Walton Webcasting receives from the people in the industry has encouraged them to keep moving forward. They hope they are repaying the hospitality shown to them by providing the best possible webcasts they can.

“We have been treated so well, and we have met some amazing people,” Grant says. “The people in the livestock industry have made Walton Webcasting what it is today.”



Raising pigs. Raising kids.

Raising our future!

What Your Money Does

NJSA activities depend on donor support. In turn, the youth purebred swine industry is a driving force behind the sustainability of many purebred operations and corporate businesses.

As a partner, you create an avenue for youth to support the swine industry and your business, as well as provide the next generation of leaders to shape our future.

- Your donation will go to: Scholarships • Educational events • Show awards • Facility rental • Junior Board development

Thank you for your continued support – NJSA and its members will continue to grow because of you.



National Junior Swine Association Pledge Form

Yes, I want to support the future of NJSA! Please invoice me for the following amount:

NJSA Boosters \$50-499

\$ _____

NJSA Backers \$500-2,499

\$ _____

NJSA Advocates \$2,500-4,999

\$ _____

NJSA Allies \$5,000-19,999

\$ _____

NJSA Visionaries \$20,000 +

\$ _____

I would like to make my 2017 contribution in the following way:

- Check (enclosed)
- Invoice me: Jan. 1 July. 1 Dec. 1 (choose one)
- Other (NJSA will contact you for invoicing options)

Name: _____

Address: _____

City/State/ZIP: _____

Phone: _____ Cell: _____

Email: _____

Yes, I would like to receive emails with information on NJSA.



Building a Strong Foundation

For our youth

For your breeding herd



Earl Cain
Cain Hampshires
ShowTec Ambassador

"This sow premix has been built for our purebred and crossbred sow operation and has worked terrific in situations where we are building sows with long parities in diverse environmental conditions. It has worked great with the boars in the boar stud as well. This premix is specifically formulated and designed for high performance of show pigs and purebred sows for which we have high expectations. This product simply works."

MoorMan's® ShowTec®

SOW PREMIX (12365)



- Vitamin-mineral supplement for the breeding herd
- Fortifies soybean meal and grain rations
- Supplies highly bioavailable trace minerals
- Multiple vitamins
- Selenium-yeast and natural-source vitamin E for antioxidant properties and immune strength
- CitriStim® for favorable impact on gut microbial population



Dylan Cain
 Grand Champion
 Purebred Breeding Gilt
 2016 National Barrow Show

START IN THE FARROWING CRATE



Performance counts! Count on your first step with **MoorMan's® ShowTec® Prestarter No. 12097** to produce top-notch, in demand, growing show pigs.

Burst Starter™

Building **champions** from the *start.*



Backed by performance and research-proven nutritional technologies, **MoorMan's® ShowTec® Burst Starter 24020** provides the foundation needed for a championship finish.

Show Feed Specialists
 Al Schminke – 217-257-3513
 Tadd Knight – 217-653-0528

James Scifres – 580-450-5611
 Krishna Custis – 307-760-0327
 Kaylee Keppy – 563-370-5012

Josh Elkins – 979-255-8309
 Kent Lewis – 806-773-8981



CONTEST

Sponsored by the
National Swine Registry

2017 NATIONAL PICTURE JUDGING CONTEST

The data used in this contest is intended for educational purposes and is not the actual data for the pigs pictured. The figures accompanying the pictures will be used by our official judges, however, to determine the official placings.

To enter the contest mail in the included form or visit nationalswine.com to enter online.



2017 National Picture Judging Contest

Official Entry Form*

Instructions

1. Rank the animals in each of the 10 classes listed to the left
2. Mark the official entry form (left) with the letter that corresponds to your placing for each class
3. Only one letter placing per class

- Letter
- Class 1 Duroc Boars
- Class 2 Hampshire Boars
- Class 3 Landrace Boars
- Class 4 Yorkshire Boars
- Class 5 Duroc Gilts
- Class 6 Hampshire Gilts
- Class 7 Landrace Gilts
- Class 8 Yorkshire Gilts
- Class 9 Grand Drive Barrows
- Class 10 Crossbred Market Hogs

1	2	3	4	A
1	2	4	3	B
1	3	2	4	C
1	3	4	2	D
1	4	2	3	E
1	4	3	2	F
2	1	3	4	G
2	1	4	3	H
2	3	1	4	I
2	3	4	1	J
2	4	1	3	K
2	4	3	1	L

3	1	2	4	M
3	1	4	2	N
3	2	1	4	O
3	2	4	1	P
3	4	1	2	Q
3	4	2	1	R
4	1	2	3	S
4	1	3	2	T
4	2	1	3	U
4	2	3	1	V
4	3	1	2	W
4	3	2	1	X

Entries must be postmarked or entered online by Feb. 1, 2017

Individual divisions:			For office use only: _____
<input type="checkbox"/> Junior division	<input type="checkbox"/> College division	<input type="checkbox"/> Adult division	
Name _____			
Address _____ City _____ State _____ Zip _____			
Phone _____ E-mail _____			
Team divisions:			For office use only: _____ For office use only: _____
<input type="checkbox"/> 4-H Team	<input type="checkbox"/> FFA Team	<input type="checkbox"/> College Team	
<small>(4-H and FFA team must have four members ONLY; College team must have five members ONLY)</small>			
PRINT team members' names: 1. _____ 2. _____			
3. _____ 4. _____ 5. _____			
School or Club Name _____			
Address _____ City _____ State _____ Zip _____			

Divisions

Individual divisions include Junior, Collegiate and Senior. Team divisions include 4-H, FFA and College. Teams MUST consist of: 4-H and FFA – four total members (no more, no less); College – five total members (no more, no less). There is NO MAXIMUM number of teams per school or club, but each team must have a different name.

Entries

Each individual may enter only ONE time, either as an individual or on one team (i.e., cannot enter on both a 4-H and an FFA team). All team entries will automatically be entered as individuals as well. Enter online at www.nationalswine.com, or mail legible entries to: Picture Judging Contest, 2639 Yeager Rd., West Lafayette, IN 47906.

Additional copies of this form can be downloaded at www.nationalswine.com. No reprints will be mailed from the NSR office. Remember, this is an educational event.

Each individual or team member must complete their own entry form, and only one entry should appear on each mailed form. This contest is open to all purebred seedstock enthusiasts in the United States.

Results

Official placings, reasons and contest winners will appear online at www.nationalswine.com after April 15, 2017, and in the April/May 2017 issue of *Seedstock EDGE*. All ties will be broken by the highest score in chronological class order. First- through fifth-place will be named in each division, and plaques will be awarded to the first-place winner of each division.

***Enter online at nationalswine.com!**

EXPLANATION OF TERMS:

Expected Progeny Difference (EPD) – An EPD is the best estimate of a sire’s or dam’s genetic worth, given the information available. It is the actual difference in performance a producer can expect from future progeny of a sire or dam, relative to the future progeny of an average tested parent.

Swine Testing and Genetic Evaluation System (STAGES™) – A genetic evaluation system provided to the members of the four breed associations of the National Swine Registry (NSR). STAGES™ utilizes performance records for numerous growth, carcass and maternal measures to predict the genetic value of each pig and its parents.

EPDs:

Backfat (BF): Expressed in inches, this EPD is a predictor of the difference in external fat thickness at the 10th rib. Animals with negative (-) EPDs for backfat will produce offspring that have less backfat at harvest than offspring of parents with higher EPDs.

Pounds of Lean (LBS): A genetic predictor of pounds of fat-free lean adjusted to a 185-pound carcass, or approximately a 250-pound live weight. This EPD is calculated from the EPDs for Backfat and Loin Eye Area. A sire with a positive (+) EPD for LBS will produce offspring that yield a higher percentage of lean and have a greater chance of obtaining full value on a lean-based carcass grid.

Days to 250 pounds (DAYS): A prediction of an individual’s genetic merit for growth performance to a 250-pound live weight. Animals with a negative (-) EPD for DAYS will produce offspring that require fewer days to reach market weight when compared to the offspring of individuals with positive (+) genetic values for DAYS. Selection on this EPD will produce progeny that aid in earlier building close outs.

Feed Efficiency (FE): Expressed in pounds, this EPD is a predictor of the amount of feed required to generate one pound of gain during the finishing phase of production and is calculated from the EPDs for BF and DAYS. Selection of sires with negative (-) EPDs will produce progeny that more efficiently convert feed to gain when compared to sires with higher EPDs for FE. This EPD can be used to genetically decrease feed costs.

Number Born Alive (NBA): An expression of the genetic merit for the number of live pigs farrowed in a litter. Daughters of sires with positive (+) EPDs for NBA will farrow a greater number of live pigs than daughters of sires with lower EPDs for NBA.

Number Weaned (NW): A genetic predictor of the total number of pigs weaned within a given parity. Daughters of sires with positive (+) EPDs for NW will wean larger litters than daughters of sires with lower genetic values for NW.

Loin Eye Area (LEA): Expressed in square inches, this EPD is a predictor of an individual’s genetic merit for 10th rib loin eye area adjusted to a 250-pound live weight. Animals with a positive (+) EPD for LEA will produce progeny with more loin muscle when compared to the offspring of animals with negative (-) genetic values for LEA.

Wean to Estrus Interval (WTE): Expressed in days, this EPD is a genetic predictor of the number of days required for a female to return to a serviceable heat after weaning. Daughters of sires with negative (-) EPDs for WTE will require fewer days to return to estrus after weaning than daughters of sires with higher EPDs. This EPD is the most efficient selection tool for genetic improvement of fertility and non-productive sow days.

Sow Productivity Index (SPI): An economic index that ranks individuals for reproductive traits. SPI weights the EPDs for Number Born Alive, Number Weaned and Litter Weight relative to their economic values. Each point of SPI represents \$1 per litter produced by every daughter of a sire. When sow efficiency is the primary concern, SPI may be the most effective selection tool for simultaneous improvement of maternal traits.

Maternal Line Index (MLI): An economic index designed for selection of seedstock used to produce replacement gilts for crossbreeding programs. MLI weights EPDs for both terminal and maternal traits relative to their economic values, with approximately twice as much emphasis on reproductive traits relative to post-weaning traits. Each point of MLI represents \$1 per litter produced by every daughter of a sire.

Terminal Sire Index (TSI): An economic index designed for the selection of seedstock for use in a terminal crossbreeding program. Animals selected for high TSI are designed to excel in lean growth and efficiency from weaning to harvest. TSI weights EPDs for Backfat, Days to 250 Pounds, Pounds of Lean, and feed/pound of gain relative to their economic values. Each additional index point difference is equal to \$0.10 per market hog.

Actual Data:

Weight Per Day of Age (Wda): Based on actual weight and age, this measure is the weight gained per day of age averaged over the life of the pig.

10th Rib Backfat (Bf): Expressed in inches, this is an actual ultrasound measure of backfat at the 10th rib and is adjusted to 250 pounds.

Loin Eye Area (Lea): Expressed in square inches, this is the actual ultrasound measurement of the loin eye size at the 10th rib and is adjusted to 250 pounds.

Intramuscular Fat (Imf): Expressed as a percentage, this value is an ultrasound measure of the lipid content of the loin muscle. Higher levels of Intramuscular Fat (IMF) are desired for meat quality based markets.

Actual Number Born Alive (Nba): This value is the actual number of pigs born from the dam’s parity when the pig was born and are measurements taken from the pig’s dam.

Actual Number Weaned (Nw): This value is the actual number of pigs weaned from the dam’s parity when the pig was born and are measurements taken from the pig’s dam.

Litter Weight (Lwt): This is the actual cumulative weight of all pigs weaned from the pigs birth litter. This weight is recorded on the pig’s dam and is adjusted to 21 days of lactation.

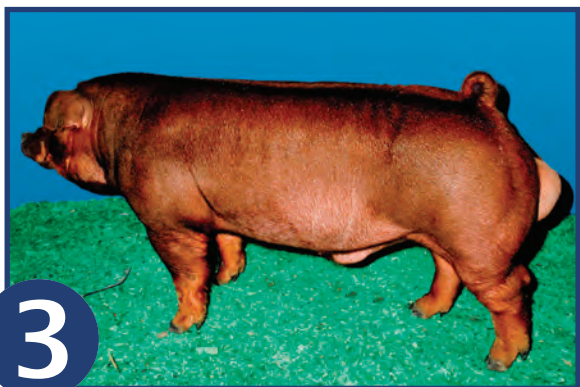
Class 1 – Duroc Boars Scenario: Rank these boars as they would be utilized in a commercial operation as terminal sires on F1 Yorkshire x Landrace females.



EPDs: -3.0 DAYS, +0.02 BF, +0.65 LBS, 128 TSI



EPDs: -3.9 DAYS, 0.00 BF, +1.40 LBS, 140 TSI



EPDs: -3.5 DAYS, -0.01 BF, +1.34 LBS, 138 TSI



EPDs: -2.0 DAYS, -0.04 BF, +1.09 LBS, 125 TSI

Class 2 – Hampshire Boars Scenario: Rank these boars as they would be utilized on Hampshire and crossbred sows to produce purebred barrows and gilts, as well as crossbred barrows eligible for the Hampshire Sired Class at the World Pork Expo Jr. National.



Class 3 – Landrace Boars Scenario: Rank these boars as they would be selected for use in a purebred operation that primarily focuses on producing grandparent boars for the purpose of F1 female production.



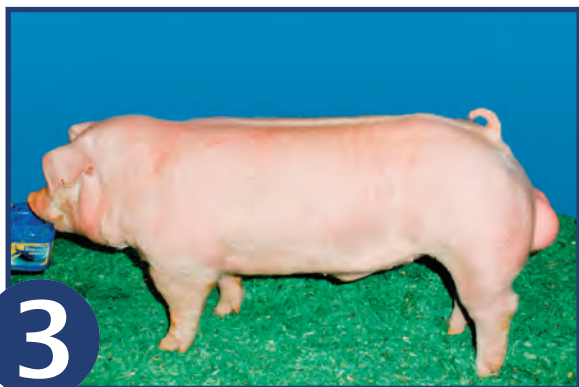
1

EPDs: +0.38 NBA, -0.22 WTE, 116 MLI



2

EPDs: +0.40 NBA, -0.25 WTE, 122 MLI



3

EPDs: -0.05 NBA, +0.10 WTE, 108 MLI



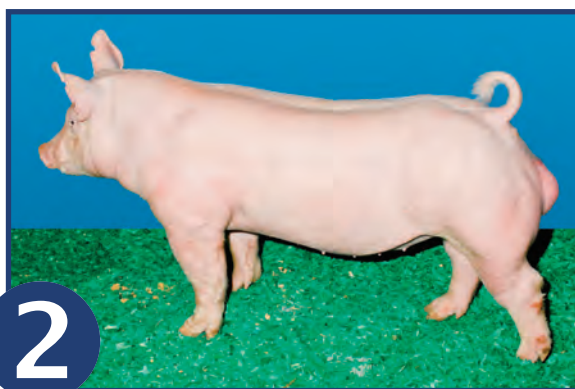
4

EPDs: +0.35 NBA, -0.21 WTE, 118 MLI

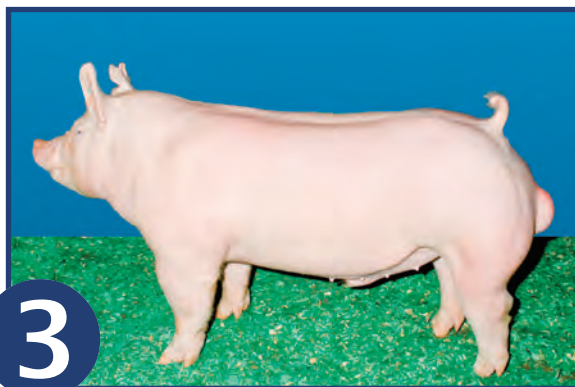
Class 4 – Yorkshire Boars Scenario: Rank these boars as they would be purchased by a showpig producer who plans to utilize Yorkshire boars on crossbred females to improve the consistency and maternal quality of their sow herd.



1



2

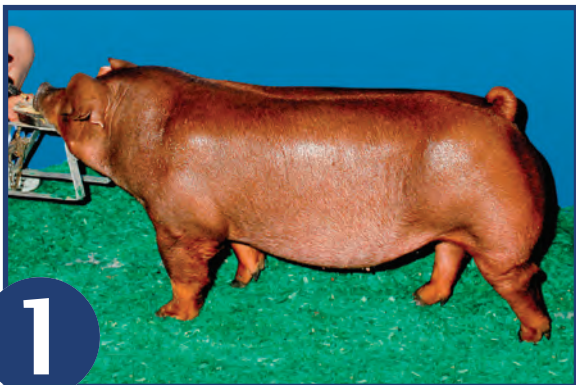


3

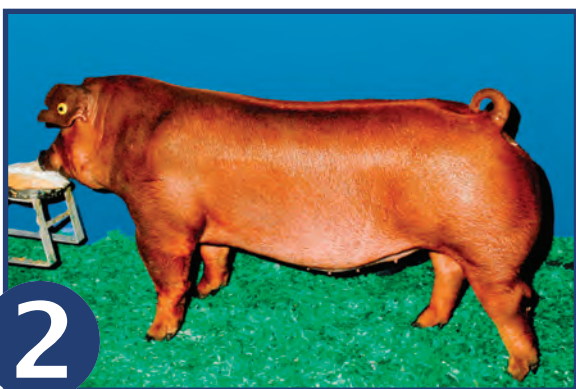


4

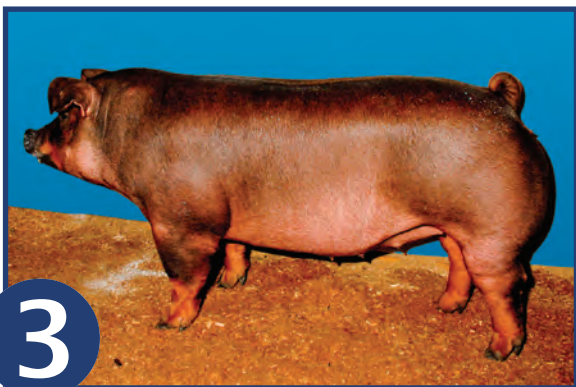
Class 5 – Duroc Gilts Scenario: Rank these gilts as replacements in a purebred Duroc operation that utilizes a branded pork program to capture value added premiums.



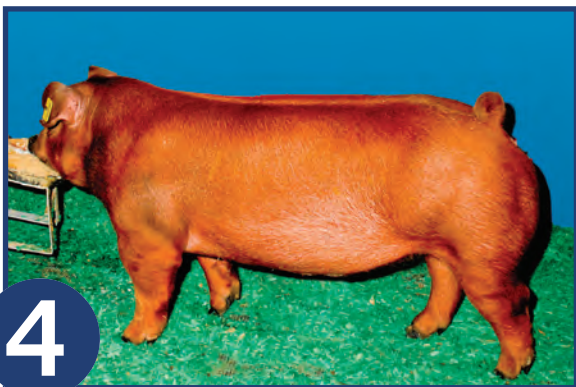
EPDs: -2.5 DAYS, +0.01 IMF, 120 TSI



EPDs: -2.1 DAYS, -0.01 IMF, 118 TSI

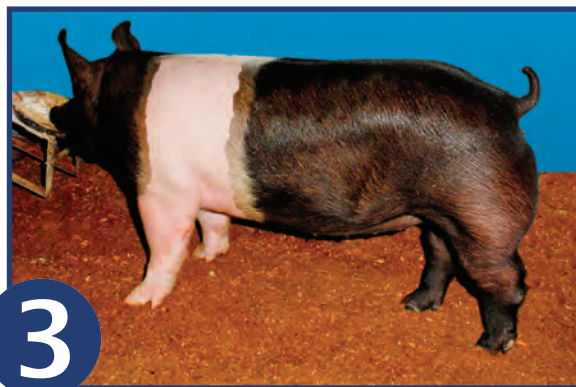
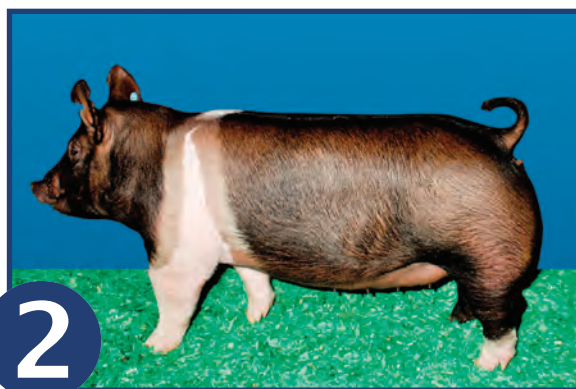


EPDs: -3.2 DAYS, +0.23 IMF, 130 TSI



EPDs: -3.5 DAYS, +0.18 IMF, 132 TSI

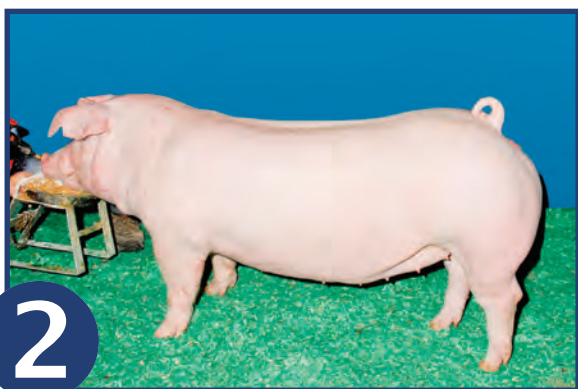
Class 6 – Hampshire Gilts Scenario: Rank these gilts as they would be purchased by an NJSA member who competes in the NJSA Premier Breeder program.



Class 7 – Landrace Gilts Scenario: Rank these gilts as they would be selected as replacements in a large multiplier that utilizes Landrace and Yorkshire genetics as the maternal foundation of their production herds.



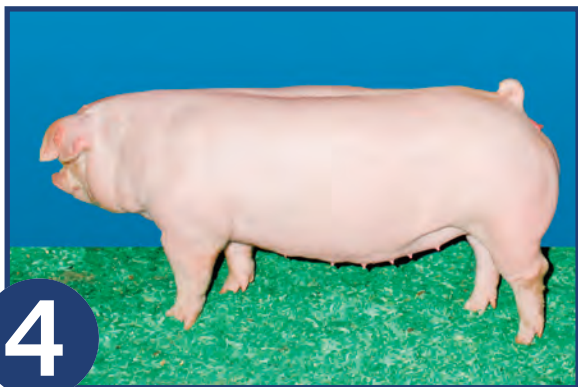
EPDs: +0.21 NBA, -0.02 WTE, 110 SPI



EPDs: +0.22 NBA, -0.01 WTE, 114 SPI

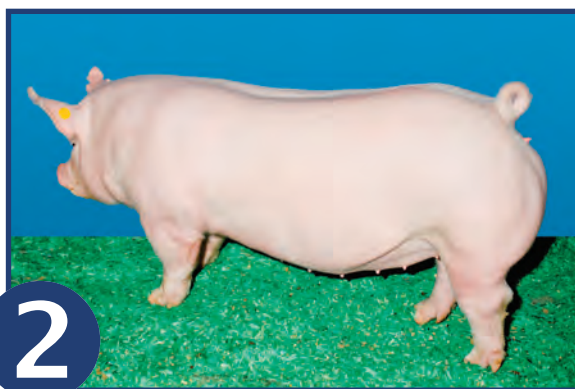


EPDs: +0.27 NBA, -0.11 WTE, 117 SPI

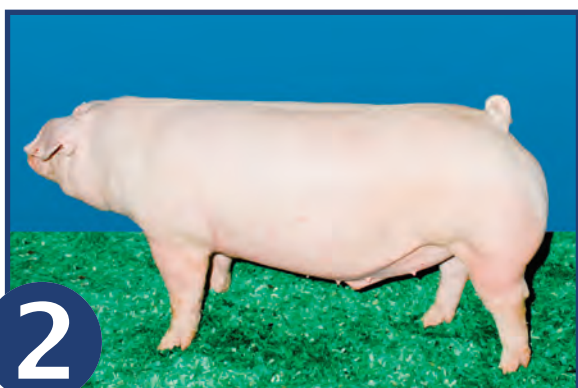
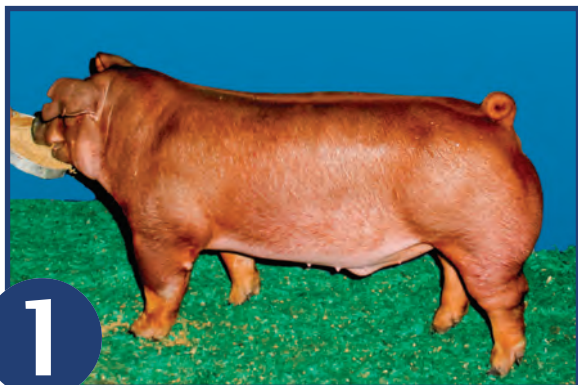


EPDs: +0.35 NBA, -0.08 WTE, 120 SPI

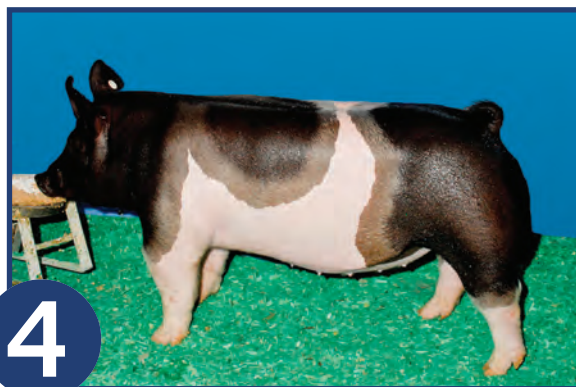
Class 8 – Yorkshire Gilts Scenario: Rank these gilts as they would be selected as replacements for a purebred Yorkshire operation that utilizes NSR Type Conference events to market breeding stock.



Class 9 Grand Drive Barrows



Class 10 Crossbred Market Hogs



INNOVATIVE SOLUTIONS TO GET YOU IN THE CHAMPION DRIVE

**“IMITATION IS THE
SINCEREST FORM
OF FLATTERY THAT
MEDIOCRITY CAN
PAY TO GREATNESS”**
— Oscar Wilde



TRUE NORTH
TECHNOLOGIES

DON'T BE FOOLED AND OVERPAY FOR A FLASHY MARKETING CAMPAIGN AND SIMILAR SOUNDING NAME.

Our patent pending products have been proven by research, field trials, in commercial operations, and some of the best show barns across the country for nearly a decade.

TrueGlo the original veterinarian developed, proven, and recommended product that supports a healthy immune system, digestive tract, appetite, and endurance.

TrueTrac our newest product with over 2 years of premarket research and development to nutritionally support healthy joints and hooves.

True North Technologies | PO Box 116 | Estherville, Iowa 51334 | 888.603.2459
www.goinshowin.com

FEATURE



Laura Kwilos works in the Agriculture & Competitive Exhibits Department at the Erie County Agricultural Society. In that department, she manages different events hosted at the Erie County Fairgrounds in Hamburg, New York, including the NJSA Eastern Regional. This article was written from her perspective as a show manager for the facilities. Kwilos is also a swine enthusiast and enjoys helping her nieces with their showpigs throughout the year.





NEW YORK

State of Mind

By Laura Kwilos

When the National Junior Swine Association (NJSJA) Eastern Regional returns to the Erie County Fairgrounds in Hamburg, New York, every year, it's much like Christmas morning for me. I'm always excited for so many reasons. I'm excited to expose the facility, ever growing and always modernizing, to a new group of exhibitors from all over the country. We are thrilled to have a nationally recognized show at the fairgrounds and introduce the new exhibitors to all that Western New York has to offer. But mostly, I'm excited to play a tiny part in a much bigger picture in an industry I love. When the NJSJA Eastern Regional and the Erie County Agricultural Society come together, it feels like a natural fit. We are two organizations, with one common mission, working together towards one common goal – to organize and host the best Eastern Regional show we can.

With very similar mission statements it's no wonder why these two organizations are a perfect fit. Both organizations focus on agriculture, education and youth development.

With the Erie County Agricultural Society mission statement and goals in mind, we feel fortunate to have the opportunity to host the show and work with the NJSJA staff year after year. When the NJSJA crew arrives on the grounds in Hamburg, New York, in October, we don't just toss them the keys to the building and tell them, "Good luck, and see you Sunday." Instead, the Erie County Agricultural Society staff and the NJSJA crew work together. While the main focus for the NJSJA staff is to make sure they put together the logistics of the show successfully, our main focus is to make sure every exhibitor and NJSJA staff member who steps foot on the property feels welcome and enjoys themselves while they are in Hamburg. Many of the exhibitors routinely come back from year to

year, and they enjoy exploring Western New York while they are here. People quickly learn that with more than 5,100 farms and 870,000 acres of farmland in the Western New York region, Hamburg, New York, is nothing like New York City! The vibrant, colorful leaves in the fall are certainly a draw all of their own, but the exhibitors also like to check out one of the natural wonders of the world in our backyard – Niagara Falls, which is only 30 minutes away from the fairgrounds.

The NJSJA provides an abundance of opportunities for youth to showcase their hogs and present their skills all over the country throughout the year. What better way to educate young people than by bringing folks together from around the country who share the same desire and passion? I'm sure when some exhibitors plan their show schedules, they are surprised to see Hamburg, New York, included on the list of show locations. This year, with 289 hogs exhibited and 145

FEATURE

exhibitors from 10 different states, as far west as Colorado, Hamburg, New York, was the place to be in early October. Some exhibitors traveled more than 1,600 miles one way, just to attend the NJSA Eastern Regional.

When the decision to move the NJSA Eastern Regional to Hamburg was made a couple of years ago, I am sure the facilities were one of the main selling points. In fact, when asked, Brian Arnold, Vice President of Member Outreach & Youth Development for the National Swine Registry (NSR), said, "The NJSA feels fortunate to have the opportunity to host the Eastern Regional show at the world-class facilities in Hamburg, New York. Not only is the state-of-the-art fairgrounds a benefit to our exhibitors, but the Erie County Fairgrounds staff always go the extra mile to assist us in whatever capacity they can to help us pull off a great event. The team in Hamburg has gone above and beyond

NJSA Eastern Regional participants enjoy several activities outside the show ring, including pumpkin painting, family movie night and a pizza party. They also are given the opportunity to explore the greater Western New York area and travel to Niagara Falls, which is only 30 minutes away from the fairgrounds.



in making this a family friendly venue, from pumpkin painting contests to the pizza party and movie night. We truly feel like we are at home every time we host the Eastern Regional at the fairgrounds in Hamburg."

The exhibitors of the NJSA Eastern Regional are always treated to an excellent show with quality judges,

top-notch staff and awesome facilities in a beautiful area of New York. It is all because two organizations, with a common mission, work together for a common goal. I am so grateful to be able to participate and assist with a great crew, wonderful show and amazing industry.

They're Not Ordinary

CPMW Anchor 37-4
(Brother x Sister and Father
x Daughter Beacon Mating)

Sire prospects and elegant females that are big, productive and designed for longevity are available from the summer litters. When you tap into this gene pool your Hampshires become better.

 **COLT AND MIKE WILLIAMS**
18130 Brush Creek Rd.
Higginsville, MO 64037
Mike: 816.797.5450
mwauctions@ctcis.net



SHOWS

2016

Eastern Regional

Hamburg, N.Y. • Oct. 6-8

EVENTS: Purebred and crossbred gilt and barrow shows, showmanship, skillathon and sweepstakes contests

JUDGE: Brett Beyers, Ill.

NO. OF PARTICIPANTS: 145 from 10 states

WINNINGS

- Overall gilt won: One-year lease of an Exiss Trailer
- Overall barrow won: \$375
- Reserve overall gilt won: \$500
- Reserve overall barrow won: \$250
- Breed & crossbred gilt champions won: \$250
- Breed & crossbred reserve gilt champions won: \$100
- Breed & crossbred barrow champions won: \$125
- Breed & crossbred reserve barrow champions won: \$50



Champion Overall Barrow & Champion Yorkshire Barrow
Shown by Brenna Mortensen, Mich.



Champion Overall Gilt & Champion Duroc Gilt
Shown by Payton Hines, Mich.



Res. Champion Overall Barrow & Champion Duroc Barrow
Shown by Seth Fearon, Ohio



Res. Champion Overall Gilt, Champion Hampshire Gilt & Champion Bred-and-Owned Hampshire Gilt
Shown by Conner Smock, Ohio



Reserve Champion Duroc Gilt & Champion Bred-and-Owned
Shown by Travis Hamilton, Colo.



Reserve Champion Bred-and-Owned
Duroc Gilt
Shown by Bryson Stickler, Ill.



Reserve Champion Hampshire Gilt &
Reserve Champion Bred-and-Owned
Shown by Payton Hines, Mich.



Champion Landrace Gilt &
Champion Bred-and-Owned
Shown by Maddie Fugate, Ill.



Reserve Champion Landrace Gilt
Shown by Madelyn Rennecker, Ohio



Reserve Champion Bred-and-Owned
Landrace Gilt
Shown by Chasten McConn, Pa.



Champion Yorkshire Gilt
Shown by Scott Gardner, Pa.



Reserve Champion Yorkshire Gilt
Shown by Jacob Batson, Ill.



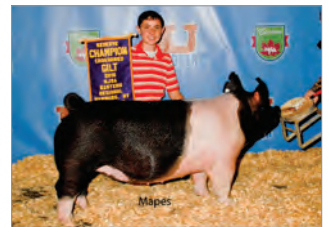
Champion Bred-and-Owned Yorkshire Gilt
Shown by Wyatt Willson, Ind.



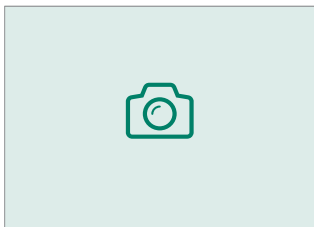
Reserve Champion Bred-and-Owned
Yorkshire Gilt
Shown by Bryson Stickler, Ill.



Champion Crossbred Gilt
Shown by Austin Joostberns, Mich.



Reserve Champion Crossbred Gilt
Shown by Travis Hamilton, Colo.



Reserve Champion Duroc Barrow
Shown by Marissa Miller, Pa.



Champion Hampshire Barrow
Shown by Sadie Popejoy, Ind.



Reserve Champion Hampshire Barrow
Shown by Avery Arbuckle, Mich.



Champion Landrace Barrow
Shown by Olivia Merrill, Mich.



Reserve Champion Landrace Barrow
Shown by Sam Batson, Ill.



Reserve Champion Yorkshire Barrow
Shown by Hannah Zundel, Pa.



Champion Crossbred Barrow
Shown by Scott Gardner, Pa.



Reserve Champion Crossbred Barrow
Shown by Joe Espey, Pa.

PREMISE I.D.

GET THE NUMBER. A Premise I.D. is required at all NSR shows

For a list of state contacts: www.nationalswine.com/library/

SHOWS

Contests



Novice Showmanship – Top 10

Front (l-r): 1st: Trenton Stadtmiller, Pa.; 2nd: Brenna Mortensen, Mich.; 3rd: Nathan Clum, N.Y.; 4th: Miley Edelman, Ohio; 5th: Adrianna Webster, Pa. **Back (l-r):** 6th: Eli Pitts, Ohio; 7th: Alexis Reif, Mich.; 8th: Nathan Prezzano, N.Y.; 9th: Avery Arbuckle, Mich.; 10th: Aaron Zundel, Pa.



Junior Showmanship – Top 10

Front (l-r): 1st: Madelyn Fearon, Ohio; 2nd: Autumn Zundel, Pa.; 3rd: Grace Beth Stewart, Ohio; 4th: Brianna Stockwell, Mich.; 5th: Jesse Stewart, Ohio **Back (l-r):** 6th: Jacob Batson, Ohio; 7th: Annie Robinson, Mo.; 8th: Breaune Reif, Mich.; 9th: Lauren Phillips, Ohio; 10th: McKenzie Stadtmiller, Pa.



Intermediate Showmanship – Top 10

Front (l-r): 1st: Lydia AcMoody, Mich.; 2nd: Payton Hines, Mich.; 3rd: Madison Cook, Del.; 4th: Bobby Batson, Ill.; 5th: Madelyn Rennecker, Ohio **Back (l-r):** 6th: Liza Klingenberg, Mich.; 7th: Marissa Miller, Pa.; 8th: Austin Labombard, N.Y.; 9th: Maddie Fugate, Ill.; 10th: Travis Hamilton, Colo.



Senior Showmanship – Top 10

Front (l-r): 1st: Austin Joostberns, Mich.; 2nd: Hannah Zundel, Pa.; 3rd: Scott Gardner, Pa.; 4th: Joe Espey, Pa.; 5th: Morgan Miller, Pa. **Back (l-r):** 6th: Mackenzie Miller, Pa.; 7th: Morgan Hollowood, Pa.; 8th: Lindsey Robinson, Mo.; 9th: Paige Stahl, Pa.; 10th: Will Robinson, Mo.



Novice Skillathon – Top 10

Front (l-r): 1st: Miley Edelman, Ohio; 2nd: Brenna Mortensen, Mich.; 3rd: Nathan Prezzano, N.Y.; 4th: Bryson Stickler, Ill.; 5th: Trenton Stadtmiller, Pa. **Back (l-r):** 6th: Ashton Bain, Ohio; 7th: Miley Reitz, Pa.; 8th: Gwen Hargrave, N.Y.; 9th: Eli Pitts, Ohio; 10th: Alexis Reif, Mich.



Junior Skillathon – Top 10

Front (l-r): 1st: Kendra Marty, Ohio; 2nd: Aubrey Gerhardt, N.Y.; 3rd: Chasten McConn, Pa.; 4th: Madelyn Fearon, Ohio; 5th: Annie Robinson, Mo. **Back (l-r):** 6th: Grace Beth Stewart, Ohio; 7th: Autumn Prezzano, N.Y.; 8th: Kamryn Harper, N.Y.; 9th: John Smock, Ohio; 10th: Erin Hayes, N.Y.



Intermediate Skillathon – Top 10

Front (l-r): 1st: Maddie Fugate, Ill.; 2nd: Katelyn Robinson, Mo.; 3rd: Morgan Dupue, N.Y.; 4th: Katie Stull, Ohio; 5th: Rachel Nesbitt, Pa. **Back (l-r):** 6th: Madelyn Rennecker, Ohio; 8th: Travis Hamilton, Colo.; 9th: Conner Smock, Ohio; 10th: Payton Hines, Mich. **Not Pictured:** 7th: Melissa Keller, N.Y.



Senior Skillathon – Top 10

Front (l-r): 1st: Sarah Nesbitt, Pa.; 2nd: Austin Joostberns, Mich.; 3rd: Bridget McConn, Pa.; 4th: Allison Gowanlock, N.Y.; 5th: Lindsey Robinson, Mo. **Back (l-r):** 6th: Paige Stahl, Pa.; 7th: Amanda Pennington, Pa.; 8th: Patrick Kibbe, N.Y.; 9th: Will Robinson, Mo.; 10th: Sami Stryfele, Ohio



Novice Sweepstakes – Top 10

Front (l-r): 1st: Brenna Mortensen, Mich.; 2nd: Trenton Stadtmiller, Pa.; 3rd: Miley Edelman, Ohio; 4th: Bryson Stickler, Ill.; 5th: Alexis Reif, Mich. **Back (l-r):** 6th: Nathan Prezzano, N.Y.; 7th: Ashton Bain, Ohio; 8th: Miley Reitz, Pa.; 9th: Nathan Clum, N.Y.; 10th: Avery Arbuckle, Mich.



Junior Sweepstakes – Top 10

Front (l-r): 1st: Madelyn Fearon, Ohio; 2nd: Grace Beth Stewart, Ohio; 3rd: Annie Robinson, Mo.; 4th: Kendra Marty, Ohio; 5th: Jesse Stewart, Ohio **Back (l-r):** 6th: Jacob Batson, Ill.; 7th: Chasten McConn, Pa.; 8th: Autumn Zundel, Pa.; 9th: Brianna Stockwell, Mich.; 10th: John Smock, Ohio



Intermediate Sweepstakes – Top 10

Front (l-r): 1st: Maddie Fugate, Ill.; 2nd: Madelyn Rennecker, Ohio; 3rd: Payton Hines, Mich.; 4th: Lydia AcMoody, Mich.; 5th: Katelyn Robinson, Mo.; **Back (l-r):** 6th: Bobby Batson, Ill.; 7th: Katie Stull, Ohio; 8th: Rachel Nesbitt, Pa.; 9th: Travis Hamilton, Colo.; 10th: Marissa Miller, Pa.



Senior Sweepstakes – Top 10

Front (l-r): 1st: Austin Joostberns, Mich.; 2nd: Lindsey Robinson, Mo.; 3rd: Allison Gowanlock, N.Y.; 4th: Scott Gardner, Pa.; 5th: Bridget McConn, Pa. **Back (l-r):** 6th: Sarah Nesbitt, Pa.; 7th: Paige Stahl, Pa.; 8th: Mackenzie Miller, Pa.; 9th: Amanda Pennington, Pa.; 10th: Will Robinson, Mo.



NATIONAL JUNIOR SWINE ASSOCIATION BECOME A MEMBER!

Becoming a member of the NJSA allows you the opportunity to travel and compete in shows across the country. The NJSA provides the perfect chance to meet new friends that have the same interests as you - showing and raising purebred hogs! Another great reason to join the NJSA is to improve your leadership skills while doing things you enjoy.

For more information visit nationalswine.com/njsa

SHOWS



KS



STATE FAIR
OF
TEXAS
LIVESTOCK SHOW



SHOWS

2016 Georgia National Fair

Perry, Georgia • Oct. 15-14

BREEDING GILT JUDGE: A.J. Genter, Ohio • MARKET JUDGE: Kent Bennington, Indiana



Overall Champion Market Barrow
Shown by Courtney Conine



Overall Reserve Champion Market Barrow
Shown by Savannah Page



Overall Champion Market Gilt
Shown by Savannah Page



Overall Reserve Champion Market Gilt
Shown by Brooks Royal



Champion Duroc Gilt
Shown by Cole Smythe



Reserve Champion Duroc Gilt
Shown by Ginger Mitchell



Champion Hampshire Gilt
Shown by Joe Mitchell



Reserve Champion Hampshire Gilt
Shown by Austin Beard



Champion Yorkshire Gilt
Shown by Will Mitchell



Reserve Champion Yorkshire Gilt
Shown by Kole Gibbs

NATIONAL SWINE REGISTRY

NATIONAL JUNIOR SWINE ASSOCIATION

JAN. 25-29, 2017

Georgia National Fairgrounds & Agricenter • Perry, Georgia

**WINTER TYPE CONFERENCE
SOUTHEAST REGIONAL**

ENTRY DEADLINE:

Dec. 15, 2016

OPEN SHOW

Duroc, Hampshire, Landrace, Yorkshire
and Crossbred boars and gilts

JUNIOR SHOW

Junior Breeding Gilts & Market Barrows
Ownership Deadline: Dec. 1, 2016

2016 Kansas State Fair Jr. Show

Hutchinson, Kansas • Sept. 11-12

JUDGE: Ryan Sites, Oklahoma



Grand Champion Overall Market Hog & Champion Crossbred
Shown by James DeRouchev



Res. Grand Champion Overall Market Hog & Res. Champion Crossbred
Shown by Caitlin Dreher



3rd Overall Market Hog & Champion Yorkshire
Shown by Luke Falkenstein



4th Overall Market Hog & Champion Duroc
Shown by Torie Thiel



5th Overall Market Hog & Champion Hampshire
Shown by Brody Nemecek



Grand Champion Overall Breeding Gilt & Champion Yorkshire
Shown by Trace Mulligan



Res. Grand Champion Overall Breeding Gilt & Champion Light AOB
Shown by James DeRouchev



3rd Overall Breeding Gilt & Champion Hampshire
Shown by Luke Prill



4th Overall Breeding Gilt & Champion Crossbred
Shown by Chase Lillard



5th Overall Breeding Gilt & Champion Duroc
Shown by William Blythe



EIGHT BREEDS. ONE SHOW.

March 1-4, 2017

Bell County Expo Center • Belton, Texas

ENTRY DEADLINE: Feb. 1, 2017

Farrowing Deadline: July 1 and after

NATIONAL SWINE REGISTRY

NSR Shows will include purebred Duroc, Hampshire, Landrace, Yorkshire boars and gilts and Crossbred boars.

SHOWS

2016 Keystone Int'l Livestock Expo

Harrisburg, Pennsylvania • Oct. 6-7

JUDGE: Steve Ernst, Maryland



Champion Duroc Boar
Shown by Brandon & Brianna Tuckwiller

CLASS 1 BOARS

- 1st: Brandon & Brianna Tuckwiller, WV, 1-7 (2MEG4 PLAYMAKER 9-3)
- 2nd: Sophia McDaniel, WV, 4-5 (ALBD3 GRUS IN MOTION 17-2)
- 3rd: Sophia McDaniel, WV, 4-1 (ALBD3 GRUS IN MOTION 17-2)

CLASS 2 BOARS

- 1st: C&K Maccorquodale, NH, 1-6 (BEYE4 SHIFITN GEARS 11-1)
- 2nd: Wolf Creek Show Pigs, WV, 31-5 (JNGF4 SGLD CRUISE CONTROL 6)
- 3rd: Rodger Bankert & Family, PA, 3-1 (SMIB2 ROLLING ROCK 4-1)



Reserve Champion Duroc Boar
Shown by C&K Maccorquodale

CLASS 1 GILTS

- 1st: Kenneth Bauer, MD, 5-5 (NBL5 FIREBALL 3-1)
- 2nd: Kenneth Bauer, MD, 2-7 (NBL5 FIREBALL 3-1)
- 3rd: Busy Acres Farm, PA, 3-6 (NBL5 FIREBALL 3-1)

CLASS 2 GILTS

- 1st: Holloway Genetics, PA, 7-9 (OAB5 TRADEMARK 5-1)
- 2nd: Ken Wetzel & Family, PA, 14-3 (ALBD3 GRUS IN MOTION 17-2)
- 3rd: Daniel Seaman, PA, 6-8 (CAIN4 SLATS 1-3)



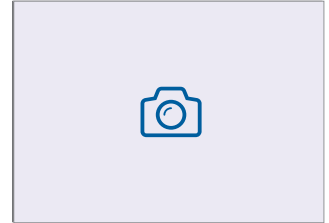
Champion Duroc Gilt
Shown by Holloway Genetics

CLASS 3 GILTS

- 1st: Kenneth Bauer, MD, 3-2 (NBL5 FIREBALL 3-1)
- 2nd: Busy Acres Farm, PA, 6-4 (BKW5 DOC II 28-1)
- 3rd: C&K Maccorquodale, NH, 1-2 (BEYE4 SHIFITN GEARS 11-1)

CLASS 4 GILTS

- 1st: Busy Acres Farm, PA, 14-3 (BKW5 DOC II 28-1)



Reserve Champion Duroc Gilt
Shown by Kenneth Bauer



Champion Hampshire Boar
Shown by Holloway Genetics

CLASS 1 BOARS

- 1st: Holloway Genetics, PA, 12-2 (BOLN4 NO DEBATE 18-8)
- 2nd: Kenneth Bauer, MD, 5-1 (EC4 OLD BAY 82-4)
- 3rd: Justine Bennecoff, PA, 21-4 (UTPS4 GRUS POWER POINT 4-4)

CLASS 2 BOARS

- 1st: Dave Hardesty, WV, 21-3 (EC4 MOSSY OAK 82-2)
- 2nd: Kenneth Bauer, MD, 13-1 (EC4 OLD BAY 82-4)
- 3rd: Justine Bennecoff, PA, 39-2 (UTPS4 GRUS POWER POINT 4-4)



Reserve Champion Hampshire Boar
Shown by Kenneth Bauer

CLASS 1 GILTS

- 1st: Kenneth Bauer, MD, 6-8 (BOLN4 NO DEBATE 18-8)
- 2nd: Heidi Benner, PA, 1-4 (EC4 OLD BAY 82-4)
- 3rd: Layla Dale Pence, WV, 7-8 (1HSH2 WIDE GLIDE 2-9)

CLASS 2 GILTS

- 1st: Dave Hardesty, WV, 14-6 (CFLK4 TCG EXILE 1-1)
- 2nd: Kenneth Bauer, MD, 3-3 (EC4 OLD BAY 82-4)
- 3rd: Kenneth Bauer, MD, 4-6 (JLM3 CARRY ON 21-1)



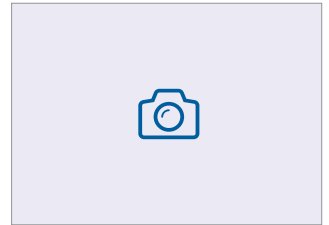
Champion Hampshire Gilt
Shown by Dave Hardesty

CLASS 3 GILTS

- 1st: Justine Bennecoff, PA, 36-6 (UTPS4 GRUS POWER POINT 4-4)
- 2nd: Kenneth Bauer, MD, 10-3 (HESP4 HOUDINI 3-1)
- 3rd: Kenneth Bauer, MD, 7-10 (EC4 OLD BAY 82-4)

CLASS 4 GILTS

- 1st: John Strawbridge, PA, 14-4 (SRF4 TCG RESURRECTION 55-3)
- 2nd: Kenneth Bauer, MD, 18-4 (EC4 OLD BAY 82-4)
- 3rd: Kenneth Bauer, MD, 18-7 (EC4 OLD BAY 82-4)



Reserve Champion Hampshire Gilt
Shown by Kenneth Bauer



Champion Landrace Boar
Shown by Lance & Mitchell Westcamp

CLASS 1 BOARS

- 1st: Lance & Mitchell Westcamp, OH, 18-4 (CARB5 ONE NIGHT STAND 1-2)

CLASS 1 GILTS

- 1st: Heidi Benner, PA, 1-4 (AAFS4 SNOWMAN 1-1)
- 2nd: Grant Lazarus III, PA, 2-7 (AAFS4 SNOWMAN 1-1)
- 3rd: Grant Lazarus III, PA, 4-1 (AAFS4 SNOWMAN 1-1)



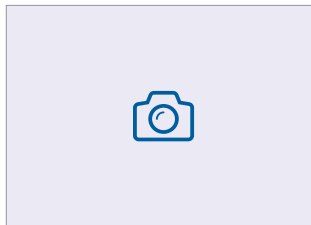
Champion Landrace Gilt
Shown by Lance & Mitchell Westcamp

CLASS 2 GILTS

- 1st: Lance & Mitchell Westcamp, OH, 13-3 (DOVS2 BAD CAT 9-8)
- 2nd: Lance & Mitchell Westcamp, OH, 21-3 (WCMP5 LEGACY 16-1)
- 3rd: Grant Lazarus III, PA, 5-2 (AAFS4 SNOWMAN 1-1)

CLASS 3 GILTS

- 1st: Grant Lazarus III, PA, 7-2 (AAFS4 SNOWMAN 1-1)



Reserve Champion Landrace Gilt
Shown by Heidi Benner

- 2nd: Grant Lazarus III, PA, 5-5 (AAFS4 SNOWMAN 1-1)

CLASS 4 GILTS

- 1st: Grant Lazarus III, PA, 9-2 (JMG4 GRUS WALL STREET 26-6)
- 2nd: Grant Lazarus III, PA, 9-3 (JMG4 GRUS WALL STREET 26-6)



Champion Yorkshire Boar
Shown by Katherine McCormick



Reserve Champion Yorkshire Boar
Shown by Wolf Creek Show Pigs



Champion Yorkshire Gilt
Shown by Lori Long



Reserve Champion Yorkshire Gilt
Shown by Blue Rock Swine

CLASS 1 BOARS

- 1st: Wolf Creek Show Pigs, WV, 18-9 (TCG5 TCG UNTOUCHABLE 2-3)
- 2nd: Katherine McCormick, MD, 1-3 (KAMC4 GRUS LINCOLN 8-2)

CLASS 2 BOARS

- 1st: Katherine McCormick, MD, 2-2 (ASLS3 GRUS MOUNTAIN MAN 10-1)

CLASS 1 GILTS

- 1st: Busy Acres Farm, PA, 1-3 (WJH4 DON'T WAIT 3-4)
- 2nd: Busy Acres Farm, PA, 1-1 (WJH4 DON'T WAIT 3-4)
- 3rd: Wolf Creek Show Pigs, WV, 3-10 (TCG5 TCG UNTOUCHABLE 29-3)

CLASS 2 GILTS

- 1st: Wolf Creek Show Pigs, WV, 18-11 (TCG5 TCG UNTOUCHABLE 2-3)
- 2nd: Drew Kralj, PA, 4-10 (NBRP3 NOT EVEN CLOSE 41-2)
- 3rd: Katherine McCormick, MD, 1-14 (KAMC4 GRUS LINCOLN 8-2)

CLASS 3 GILTS

- 1st: Lori Long, MD, 1-1 (MKFL5 MOONBEAM 1-8)
- 2nd: Brad Jaeger, MO, 12-3 (RIY3 BONE BUZZ 87-7)
- 3rd: Lori Long, MD, 1-5 (MKFL5 MOONBEAM 1-8)

CLASS 4 GILTS

- 1st: Blue Rock Swine, WV, 33-5 (DSUR5 COLE MINE 10-3)
- 2nd: Busy Acres Farm, PA, 12-3 (TCG5 TCG UNTOUCHABLE 2-3)
- 3rd: Busy Acres Farm, PA, 12-1 (TCG5 TCG UNTOUCHABLE 2-3)

2016 Cow Palace Grand National

Daly City, California • Oct. 15-16

JUDGE: Miles Toenyes, Illinois



Grand Champion Classic Hog & Champion Prospect Market Hog
Shown by Eleanor Borba



Reserve Grand Champion Classic Hog & Champion Progress Market Hog
Shown by Lucia Abreu



Champion Market Hog
Shown by Corie Lee Falaschi



Reserve Champion Market Hog
Shown by Alexis Coonce



Reserve Champion Progress Hog
Shown by Eli Johnson



Reserve Champion Prospect Hog
Shown by Hannah Seymore



Supreme Champion Gilt & Champion Duroc
Shown by Alexis Coonce



Reserve Supreme Champion Gilt & Champion Crossbred
Shown by Alia Rodgers



Supreme Champion Boar
Shown by Charlie Minetti

SHOWS

2016 State Fair of Texas

Dallas, Texas • Oct. 2 and Oct. 4-6

BREEDING GILT JUDGE: Kyle Pullen, Indiana • MARKET BARROW JUDGE: Jim McCoy, Ohio



Grand Champion Market Barrow & Champion Other Crossbred
Shown by Riley Reep



Reserve Grand Champion Market Barrow & Champion Duroc
Shown by Garret Vance



Reserve Champion Duroc Barrow
Shown by Regan Helms



Champion Hampshire Barrow
Shown by Hunter Low



Reserve Champion Hampshire Barrow
Shown by Kamryn Guenther



Champion Yorkshire Barrow
Shown by Christon Watson



Reserve Champion Yorkshire Barrow
Shown by Jacy Mann



Grand Champion Purebred Gilt & Champion Duroc
Shown by Logan Webb



Reserve Grand Champion Purebred Gilt & Champion Yorkshire
Shown by Kaycee Rollwitz



Reserve Champion Duroc Gilt
Shown by Courtney Clark



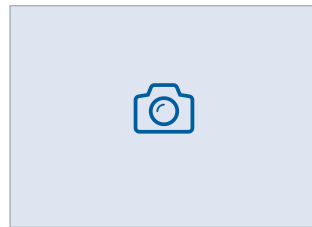
Champion Hampshire Gilt
Shown by Kayla Wunderlich



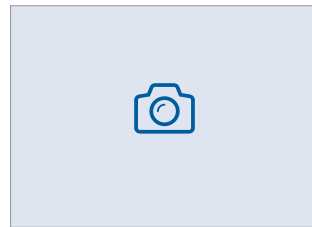
Reserve Champion Hampshire Gilt
Shown by Cameron Luedtke



Champion Landrace Gilt
Shown by Michael Clark



Reserve Champion Landrace Gilt
Shown by Emma Howell



Reserve Champion Yorkshire Gilt
Shown by Colt Wolf

Shows and Events



Show Schedule

SHOW	WHERE	WHEN	ENTRY DEADLINE
National Western Stock Show	Denver, Colo.	Jan. 17-18, 2017	TBD
NJSA Southeast Regional	Perry, Ga.	Jan. 25-29, 2017	Dec. 15, 2016
NSR Winter Type Conference	Perry, Ga.	Jan. 28, 2017	Dec. 15, 2016
NSR Southwest Type Conference	Belton, Texas	March 1-4, 2017	Feb. 1, 2017
NSR Weanling Extravaganza	Richmond, Ind.	April 19, 2017	March 22, 2017
World Pork Expo	Des Moines, Iowa	June 5-10, 2017	April 20, 2017
WPX Junior National	Des Moines, Iowa	June 5-10, 2017	April 20, 2017
NSR Summer Type Conference	Louisville, Ky.	July 3-8, 2017	May 17, 2017
National Junior Summer Spectacular	Louisville, Ky.	July 3-8, 2017	May 17, 2017
NJSA Southwest Regional	Woodward, Okla.	Sept. 1-3, 2017	Aug. 9, 2017
National Barrow Show®	Austin, Minn.	Sept. 9-13, 2017	Aug. 16, 2017
NBS® Junior Classic	Austin, Minn.	Sept. 9-10, 2017	Aug. 16, 2017
NJSA Eastern Regional	Hamburg, N.Y.	TBD	TBD
American Royal	Kansas City, Mo.	TBD	TBD
NAILE	Louisville, Ky.	TBD	TBD
NSR Fall Classic	Duncan, Okla.	Nov. 16-19, 2016	CLOSED
NJSA Western Regional	Schedule and location information coming the winter of 2016!		
Arizona National	Phoenix, Ariz.	Dec. 27-Jan. 1, 2017	CLOSED
NJSA CONFERENCES	WHERE	WHEN	REGISTRATION DEADLINE
LEAD Camp	TBD	TBD	TBD
National Youth Leadership Conf.	Oklahoma City, Okla.	April 7-9, 2017	March 8, 2017

SCHEDULE

Enter online at nationalswine.com

NSR Fall Classic

Nov. 16-19, 2016

Stephens County Fairgrounds
Duncan, Okla.

**BREEDING ANIMAL
ENTRIES FARROWED:**
On or after April 1, 2016



SCHEDULE OF EVENTS:

Wednesday, Nov. 16

8 a.m.: Earliest entries may arrive

Thursday, Nov. 17

9 a.m.: All entries must be in the barn

5 p.m.: Weanling Pig Sift

Friday, Nov. 18

SOUTH ARENA

7:30 a.m.: Yorkshire show followed by Landrace, Hampshire, Duroc, Crossbred Boar

MAIN ARENA (RING B)

8 a.m.: Berkshire show followed by Poland, Chester, Spot

5:30 p.m.: Selection of the champion
Weanling Pig Prospects (Ring A)
Fabulous Female Sale to follow
(All gilts selected will be sold in this sale.)

6:45 p.m.: Male Weanling Pig Sale (Ring B)

Saturday, Nov. 19

MAIN ARENA (RING A)

9 a.m.: Yorkshire sale followed by Landrace, Hampshire, Duroc, Crossbred Boar

MAIN ARENA (RING B)

9:30 a.m.: Berkshire sale followed by Poland, Chester, Spot

Open Show Judges:

Duroc: Rick Whitman, Texas

Hampshire: Kevin Wendt, Ohio

Landrace: Travis Platt, Ind.

Yorkshire: Mark Hoge, Ill.

Crossbred: George Cooper, Okla.

Weanling Sift Judges:

Purebred: Ryan Sites, Okla.

Crossbred: Willie Kirkpatrick, Okla.

NSR REPRESENTATIVES:

Michael Lackey 765.427.3733 • michael@nationalswine.com

Blaine Evans 765.490.3731 • blaine@nationalswine.com

Mick Bellamy 765.427.7741 • mick@nationalswine.com

Brian Arnold 765.427.1186 • arnold@nationalswine.com

Arizona National



Dec. 27, 2016-Jan. 1, 2017

Arizona State Fairgrounds

Phoenix, Ariz.

www.anls.org

OWNERSHIP DEADLINE: Oct. 31, 2016

ENTRIES FARROWED: April 1, 2016 and after

JUDGE:

Kane Causemaker, Ill.

SHOWMANSHIP JUDGE:

Warren Beeler, Ky.

SCHEDULE OF EVENTS:

Fairgrounds Closed Dec. 25, 2016

Monday, Dec. 26

No Livestock May Enter Grounds Prior to this Date

8 a.m.: Livestock staging begins north lot

Tuesday, Dec. 27

6 a.m.: Livestock arrival begins

4 p.m.: Junior swine paper check-in begins
(Junior swine check-in deadline is 8 p.m.)

7 p.m.: Arrival deadline for all junior livestock

8 p.m.: Gates closed for all arrivals
(All junior livestock in place)

Wednesday, Dec. 28

8 a.m.: Mandatory junior swine orientation
– followed by inspection of all swine
at each pen by show officials

9 a.m.: Junior swine weight cards due

Noon: Junior swine showmanship

3:30 p.m.: Show-Rite Swine Clinic followed
by PQA overview

5:30 p.m.: Junior exhibitor Barnyard Olympics

Thursday, Dec. 29

7:30 a.m.: Gilt Show followed by MANDATORY
Gilt Sale meeting

4 p.m.: Stand Alone Feeds Clinic (Swine)

6 p.m.: Grand Canyon Classic Gilt Sale

Friday, Dec. 30

7:30 a.m.: Junior Market Barrow Show

2:30 p.m.: Supreme Market Show

5 p.m.: Master Showmanship

Sunday, Jan. 1

Noon: Junior Auction Lunch

MORE INFORMATION: 765.463.3594

Kaley Bontrager ext. 109 • kaley@nationalswine.com

Ellen Knauth ext. 101 • ellen@nationalswine.com

NSR Winter Type Conference NJSA Southeast Regional

Jan. 25-29, 2017

Georgia National Fairgrounds & Agricenter • Perry, Ga.

ENTRIES DUE: Dec. 15, 2016

OWNERSHIP DEADLINE: Dec. 1, 2016

ENTRIES FARROWED: On or after June 1, 2016

NSR REPRESENTATIVES:

Michael Lackey 765.427.3733 • michael@nationalswine.com
Blaine Evans 765.490.3731 • blaine@nationalswine.com
Mick Bellamy 765.427.7741 • mick@nationalswine.com
Brian Arnold 765.427.1186 • arnold@nationalswine.com

MORE NJSA INFORMATION: 765.463.3594

Kaley Bontrager ext. 109 • kaley@nationalswine.com
Ellen Olson ext. 101 • ellen@nationalswine.com

OPEN JUDGES:

Duroc: Todd Beyers, Texas **Yorkshire:** Randall Buck, Okla.
Hampshire: Mitchell Hankins, Ark. **Crossbred:** Todd Beyers, Texas
Landrace: Randall Buck, Okla.

JUNIOR JUDGES:

Barrows: Todd Beyers, Texas **Showmanship:**
Gilts: Blane Olson, Illinois Mitchell Hankins, Ark.

SCHEDULE OF EVENTS:

Wednesday, Jan. 25

6 p.m.: Earliest entries may arrive

Thursday, Jan. 26

SHOW ARENA*

7 a.m.-Noon: Junior Show Registration*

11 a.m.: All Junior entries must be in place

11 a.m.-Noon: Youth PQA Plus Training*

Noon-1:30 p.m.: Adult PQA Plus Training*

1:45 p.m.: Exhibitor Meeting*

2 p.m.: Showmanship Preliminaries*
(Oldest to youngest)

OPEN SHOW OFFICE (LOWER BARN)**

4 p.m.: Crossbred Gilt weight cards due**

Friday, Jan. 27

SHOW ARENA*

7:30 a.m.: Showmanship Finals*
(Senior, Intermediate, Junior, Novice)

Following Showmanship Finals:

Junior Purebred Gilt Show*
(Duroc, Hampshire, Landrace, Yorkshire)

Immediately following

Junior Purebred Gilt Show:
Junior Crossbred Gilt Show*

Immediately following

Junior Crossbred Gilt Show
MVP (Mentoring Values People) Activity*

OPEN SHOW OFFICE (LOWER BARN)****

9 a.m.-3 p.m.: Open Show Registration****

LOWER BARN****

10 a.m.: Open Crossbred Boar Weigh-in****

10 a.m.: All Open entries must be in place****

OPEN SHOW OFFICE (LOWER BARN)****

Noon: Open Crossbred Gilts, Crossbred and
Purebred Barrow weight cards due****

Saturday, Jan. 28

SHOW ARENA*

7:30 a.m.: NSR Winter Type Conference Open
Show: Duroc, Hampshire, Landrace,
Yorkshire and crossbred gilts and boars*

Following Open Show: Junior Crossbred Barrow Show*

MCGILL BUILDING***

8:30 a.m.: Skillathon Facilitator Meeting***

9 a.m.-Noon: Skillathon***

**At the conclusion of Skillathon
(Announcements will be made):**
Skillathon Review***

5 p.m.: Family Pizza Party ***
(Free to all exhibitors and their families)

5 p.m.: Corn Toss Tournament Registration***
(Youth and adults welcome)

5:30 p.m.: Corn Toss Tournament***
(Youth and adults welcome)

SHOW ARENA*

6 p.m.: Winter Type Conference Sale: Duroc,
Hampshire, Landrace, Yorkshire
and crossbred boars and gilts*

6 p.m.: Junior Gilts released*

Sunday, Jan. 29

SHOW ARENA*

7 a.m.: Family Breakfast*
(Free to all exhibitors and their families)

7 a.m.: Inspirational Service with Ray Perryman*

8 a.m.: Junior Purebred Barrow Show* (Duroc,
Hampshire, Landrace, Yorkshire)

**15 minutes following the conclusion of the barrow
show the Silent Auction will be closed**

**Awards Ceremony (Skillathon &
Sweepstakes Awards) will immediately
follow the Junior Purebred Barrow Show***



SCHEDULE

Enter online at nationalswine.com

NSR Southwest Type Conference

March 1-4, 2017 | Bell County Expo Center • Belton, Texas



SHOW: Friday, March 3

SALE: Saturday, March 4

- The NSR shows include purebred Duroc, Hampshire, Landrace, Yorkshire boar and gilt and crossbred boar genetics.
- Berkshires, Chester Whites, Polands, Spots boar and gilt and crossbred gilts will also be exhibited.

ENTRIES DUE: Feb. 1, 2017

ENTRIES FARROWED: On or after July 1, 2016

SCHEDULE OF EVENTS:

Wednesday, March 1

12 p.m.: Earliest entries may arrive

Thursday, March 2

9 a.m.: Check-in begins and scanning

10 a.m.: All hogs must be in barn

Friday, March 3

7:30 a.m.: Yorkshire show followed by Landrace, Hampshire, Duroc, Crossbred Boar

Saturday, March 4

9 a.m.: Yorkshire sale followed by Landrace, Hampshire, Duroc, Crossbred Boar

OPEN JUDGES:

Duroc: TBA

Yorkshire: TBA

Hampshire: TBA

Crossbred: TBA

Landrace: TBA

NSR REPRESENTATIVES:

Michael Lackey 765.427.3733 • michael@nationalswine.com



Blaine Evans 765.490.3731 • blaine@nationalswine.com

Mick Bellamy 765.427.7741 • mick@nationalswine.com

Brian Arnold 765.427.1186 • arnold@nationalswine.com

WW-Paul Livestock Scales

Proud sponsor of the **N_JSA**



Model 58SX
500-lb. single animal livestock scale



The new and improved WW-Paul Scale Model 58SX includes the new side slide, bi-fold gate design for faster and easier operation. The Model 58SX is easily retrofitted with an electronic cell, readout indicator and ticket or tape printer, if desired. Heavy-duty construction guarantees an accurate and dependable livestock scale.

Call for name of nearest dealer.

WW-PAUL LIVESTOCK SCALES
Duncan, Okla., 800.657.6062 • Thomas, Okla. 800.999.1214
bo4scales@paulscales.com • P.O. Box 729 • Duncan, OK 73533

Hog & Sheep pens

All hog and sheep components are constructed from A-513 high-tensile steel tubing. Framework is fabricated from 1 1/2", 14-gauge tubing, and interior vertical rails are built from 1 1/2", 16-gauge tubing. All joints are saddle cut for extra strength. Gate frame is 72" tall and panels are available in 41" or 48" heights. All units have powder coat finish.





Dan E. Baker
AUCTIONEER



765.583.2466

7714 W 500 N
West Lafayette, IN 47906



Clayton
Agri-Marketing, Inc.
Exporter of quality swine genetics



Tony Clayton
Auctioneer
2507 Industrial Drive
Jefferson City, MO 65109
573.659.8560
Fax: 573.659.8548

E-mail: tony@claytonagri-mktg.com
www.claytonagri-mktg.com

AUCTIONEER



*Let Your Next Sale
Be Your Best One!*



Al Conover

P.O. Box 9 • Baxter, IA 50028
Office: 641.227.3537 • Cell: 515.491.8078
Home: 641.227.3686 • conover@conoverauction.com



CHAD DAY
AUCTIONEER



6872 N. STATE ROAD 19
KOKOMO, IN 46902

260.388.2876

Ron Kreis
AUCTIONEER
740.683.3235



2005 WORLD CHAMPION



David Mullins
Licensed Auctioneer Danville, Ind.

317.503.2798
www.dmauctioneer.com



800.282.0428

- Semen
- A.I. Supplies
- Swine Vaccines

Check out all of our showpig sires at
[www.showpigs.com!](http://www.showpigs.com)

PRAIRIE STATE SEMEN INC.
968 Co. Rd. 1000 N. • Champaign, IL 61822

The SHOWBOX

OFFICIAL PUBLICATION OF THE
TEXAS CLUB CALF ASSOCIATION TEXAS CLUB PIG ASSOCIATION
TEXAS CLUB LAMB ASSOCIATION TEXAS CLUB GOAT ASSOCIATION
GEORGIA CLUB CALF PRODUCERS ASSOCIATION

The Showbox Magazine

No matter what your business or what you are promoting, The Showbox reaches the people who are purchasing your products.

We don't just sell advertising – we help create new customers.

www.theshowbox.com

1512F Loop 304
Crockett, Texas 75835

936-544-2787
936-544-3549 fax

Ccarrabba@aol.com
Cell 713-416-2314

Scooter@theshowbox.com
Cell 281-797-5842

Karenh@theshowbox.com
Cell 936-222-6779

NAUGHTON
Auction Service



Dan Naughton
Auctioneer
Ringman

Livestock
Machinery
Real Estate

2487 North 2100 East Ave.
Atlanta, IL 61723

(217) 304-6502

Howard Parrish
419.553.6042




**Contact me
for open dates.**

05140 Co. Rd. J
Edon, OH 43518



419.566.1599
OFFICE: 121 Jackson Street • Plain City, OH 43064



Livestock
Real Estate
Farm Equipment

Kevin Wendt
Auctioneer

www.thewendtgroup.com

WILLIAMS



Mike Williams
Auctioneer

816.797.5450

18130 Brush Creek Road
Higginsville, MO 64037
mwactions@ctcis.net

Since 1980



Purple Circle
AMERICA'S YOUTH LIVESTOCK MAGAZINE

806.499.3749 • 806.499.3759 fax
14200 FM 1062 - Canyon, Texas 79015
www.purplecircle.com • purplecircle@midplains.coop

Who America's Premier Youth Livestock Magazine since 1980 serving the Youth and those involved with the Junior Livestock Show Industry. With no added costs we'll advertise your cattle, goats, hogs, lambs, show supplies, feed or trailers - whatever you have to sell we'll get the word out to bring in the buyers. Besides our magazine we can also put together your brochures.
Give us a call for all your advertising needs
806.499.3749.

What

When 24 hours a day / 7 days a week -
365 days a year since 1980 -
on the internet and in our publication.

Where Nationwide with subscribers in 45 states,
Canada and Mexico.
*Free distribution to all major livestock shows,
numerous state fairs and dozens of jackpots and sales.*

Why Because you want to spend your hard earned advertising dollars with the BEST! *It's a smart move to advertise with the Purple Circle - we get the job done for the best prices!* The Purple Circle serves as a showcase, a public arena, from which people from coast to coast can promote their livestock and products and to acknowledge 4-H and FFA exhibitors from other areas of the Country.
You'll also keep up to date with the latest trends and find what you are looking for by subscribing to Purple Circle.



SANTORO SWINE GENETICS
Lowellville, Ohio

- GUARANTEED SEMEN
- BRED GILTS
- 3 FOR 1 OFF-SEASON PRICING

Check our website for guarantees and specials throughout the year!

FARM: 330-536-8346
TONY SANTORO: 330.360.0078

Like us on: **facebook**
Find us on: **Showpig.com**

Seedstock Source

Your personal access to the best purebred Duroc, Hampshire, Landrace and Yorkshire genetics in the United States.

CALIFORNIA

BAR-ONE FARMS
Wes Barone
6093 W. Mountain View Ave.
Caruthers 93609
Phone: 408.981.4881
(Durocs, Hamps, Yorks)

BEN TERRY
3540 Stony Point Rd.
Santa Rosa 95407
Phone: 707.584.5374
(Durocs, Crossbreds)

BOYTOR SWINE FARM
14811 Chandler St.
Corona 92880
Phone: 951.314.8876
(Hamps, Yorks)

CALIFORNIA STATE UNIVERSITY, CHICO
Don Sinnott, Swine Technician
Phone: 530.898.6025
Email: dsinnott@csuchico.net
Clay Carlson, Faculty
Phone: 530.898.6694
Email: ccarlson2@csuchico.edu
(Yorks)

CY A. HAWKINS
2299 Zumwalt Rd.
P.O. Box 1326
Williams 95987
Phone: 530.473.2264
(Hamps, Yorks, Crossbreds)

DONALD NAVES AND FAMILY
Donald & Michelle Naves
3922 Sycamore Lane
Pleasant Grove 95668
Phone: 916.799.5259
(Hamps, Yorks)

GOLDEN STATE GENETICS
Scott & Rachelle Tucker,
John & June Bailey
445 S. Blaker Rd.
Turlock 95380
Phone: 209.656.9550
(Durocs, Hamps, Landrace, Yorks)

JUBE'S HAMPSHIRE
Jube Begley
815 Scenic Ave.
Santa Rosa 95407
Phone: 707.585.0538
(Hamps, Yorks)

KPAP
Kody Petrucci
70 Aloha Ct.
Petaluma, CA 94952
Phone: 707.765.2581
(Durocs, Spots, Yorks)

LOIN EYE FARMS
Paul J. Fernandes Jr.
1365 Tawny Lane
Turlock 95380
Phone: 209.664.0309
Fax: 209.664.0309
(Hamps, Yorks)

MARIO & MICHELE BUONI
10400 Old River Rd.
Bakersfield 93311-9734
Phone: 661.397.8940
(Durocs, Hamps, Yorks)

MARK & SANDY OTTENWALTER
2260 Lurline Ave.
Colusa 95932
Phone: 530.458.5700
(Hamps, Yorks)

MODESTO JR. COLLEGE
John Mendes
435 College Ave.
Modesto 95350
Phone: 209.575.6205
Fax: 209.575.6199
(Durocs, Hamps, Yorks)

MOENCH FARMS
Wilbert & Dennis Moench
24701 Ave. 106
Terra Bella 93270-9716
Phone: 559.535.4347
Fax: 559.535.4347
(Durocs, Hamps, Yorks)

MURPHY FARM
Cameron & Andrew Murphy
P.O. Box 105
Bodega 94922
Phone: 707.876.3364
Cell: 707.953.6174
(Hamps, Yorks)

NO LIMIT GENETICS
Adam Mendoza &
Becky Garner
2500 S. Walton Ave.
Yuba City 95993-9704
Phone: 530.844.2932
Cell: 209.602.6106
(Durocs, Hamps, Yorks)

POWERHOUSE FARMS
Nathan & Kim Copp
2129 S. 10th St.
Los Banos 93635
Phone: 209.827.0460
Cell: 559.280.0119
(Durocs, Hamps, Landrace, Yorks)

PREMIER SHOW PIGS
Sara Day
3201 S Carpenter Rd
Modesto 95358
Phone: 559.909.2369
(Durocs, Hamps, Yorks, AOB)

REEDLEY COLLEGE
David Lopes
995 N. Reed Ave.
Reedley 93654
Phone: 559.638.0319
(Durocs, Yorks)

RIVER VIEW GENETICS
Tom Millar Jr.
8209 Co. Rd. 29
Glenn 95943
Phone: 530.934.0220
(Durocs, Hamps, Yorks)

SMALL TOWN GENETICS
James & Kara Backman
2812 N. Hickman Rd.
Denair 95316
Phone: 209.620.4106
(Durocs, Hamps, Yorks)

FLORIDA

CLYATT SHOWPIGS
Ken Clyatt
8882 NW 39th Place
Lake Butler 32054
Phone: 386.752.8214
(Yorks, Crossbreds)

D & D SWINE
Dale Gavin, Don Gavin,
Doug Naylor
11715 E. Robin Lane
Floral City, FL 34436
Phone: 352.423.3042
Cell: 352.476.8384
Cell: 352.302.5565
(Yorks, Crossbreds)

HOLT SHOWPIGS
Dennis & Darren Holt
17402 SW 67 Ave
Archer 32618
Phone: 352.495.2760
Cell: 352.538.5363
Email: holtshowpigs@gmail.com
(Hamps, Yorks, Crossbreds)

MIKE WILLIAMS SHOWPIGS
Mike, Beth & Bud Williams
3816 NW 216th St.
Lawtley 32058
Phone: 904.710.9259
(Hamps, Yorks, Crossbreds)

GEORGIA

PAT & BONNIE THRIFT & SON
Rt. 3, Box 1400
Folkston 31537
Phone: 912.496.2131
Fax: 912.496.2131
(Hamps, Yorks)

ILLINOIS

A&W GENETICS
Ande DeSollar/Ty Olson
1117 Lafayette St.
Beardstown 62618
Phone: 217.491.8364
Email: tyolson8364@gmail.com
(Durocs, Yorks)

ARMSTRONG GENETICS
JR & Ali Armstrong
Rt. 1, Box 57
Huntsville 62344
Phone: 217.667.2117
Cell: 217.440.7768
(Hamps, Yorks, Chesters, Spots)

BILL & JANA RANGE SHOWPIGS
Bill & Jana Range
6862 Fountain Oak Lane
Waterloo 62298
Phone: 618.973.1070
Email: rangehogfarm@yahoo.com
(Durocs, Hamps, Chesters, Yorks)

BEHRMANN HOG FARM
Scott, Cliff & Tyler Behrmann
303 E. St. Rt. 161
Albers 62215
Plant: 618.248.5151
Farm: 618.228.7073
(Durocs, Hamps, Landrace, Yorks)

BOWEN HAMPS
Brent & Kelly Bowen
16525 N. 900 E. Rd.
Bloomington 61704
Cell: 309.208.9058
(Hamps)

CEDAR RIDGE FARMS INC.
The Grohmanns
5535 Cedar Ridge Lane
Red Bud 62278
Phone: 618.473.2325
Fax: 618.473.2264
Email: angie@cedargenetics.com
(Durocs, Hamps, Landrace, Yorks)

CENTER PRAIRIE GENETICS
Tom Olson
16250 U.S. Hwy. 6
Princeton 61356
Cell: 815.303.4625
Farm: 815.875.3689
(Durocs, Hamps, Poland, Yorks)

DENNY SHOW PIGS
Alex Denny
345 N. Co. Rd. 3050
Augusta 62311
Phone: 217.392.2442
Cell: 217.248.8789
Email: ardenny1@gmail.com
(Hamps)

DICK & ZACK HOWELL
8775 Little Galilee Rd.
Maroa 61756
Dick: 217.935.8108
Zack: 217.935.6877
(Durocs, Hamps, Yorks)

REFERENCE

DOWN FAMILY SHOWPIGS

Brian Down
3848 N. 1600 E. Rd.
Cabery 60919
Phone: 815.949.1667
Cell: 217.823.3943
(Hamps, Yorks)

GLENN SADDORIS
25405 115th Ave. N.
Port Byron 61275
Phone: 309.523.3608
(Hamps)

JOHN & MELISSA
LIVERMORE & FAMILY
Rt. 1, Box 23
Media 61460
Phone: 309.924.1936
Cell: 309.221.2411
(Hamps, Yorks)

JORDAN MCGREW
17241 N. 24th Rd.
Good Hope 61438
Phone: 309.772.2694
(Durocs, Hamps, Landrace, Yorks)

KYLE & ELLEN KNAUTH
1253 N. 2600 E. Rd.
Milford 60953
Phone: 815.383.4141
(Landrace, Yorks)

LORENZEN FARMS
Tracy Lorenzen
11428 E. 2400 Rd.
Chrisman 61924
Phone: 217.269.2011
(Yorks)

MALONE SHOW PIGS
Roger, Mary Ann & Miranda
2076 Knox Rd. 2250 N.
Victoria 61485
Phone: 309.879.2550
Cell: 309.361.1119
Email: rmalone2@mymctc.net
(Durocs, Yorks, Crossbreds)

MCBRIDE HAMPS
David, Douglas & Nolan
1002 Il. Rt. 97
Gilson 61436
David: 309.221.4797
Douglas: 309.221.8295
Nolan: 309.221.0972
(Hamps)

MOORE'S DUROCS
Russell Moore
Rt. 1, Box 109
Ellery 62833
Phone: 618.445.3944
(Durocs)

NORMAN BROS. & SON
Greg & Grant Norman
7234 E. 2700th Rd.
Sidell 61876
Phone: 217.887.2506
Cell: 217.822.2506
(Durocs, Hamps, Yorks)

PETER FARMS
Mark & Don Peter
1969 E. 1250th St.
Mendon 62351
Mark: 217.257.1381
Email: peterfarms@live.com
(Durocs, Hamps, Yorks)

SCHULER FAMILY FARMS

Paul Schuler
29801 E. 2600 N. Rd.
Lexington 61753
Phone: 309.365.8738
Cell: 309.275.3973
(Durocs, Landrace, Yorks)

SCOTT & BRYAN BENNETT
13507 N. Rupp Rd.
Martinsville 62442
Phone: 217.382.4772
Cell: 217.251.0466
(Durocs, Hamps, Yorks)

STOHLQUIST SHOWPIGS
Ryan & Victoria Stohlquist
15825 Beaverton Rd.
Poplar Grove 61065
Phone: 815.569.1035
Cell: 815.509.0846
(Durocs, Yorks)

SWENSON GENETICS
Seth Swenson
13620 Lisbon Rd.
Newark 60541
Phone: 815.736.6097
Cell: 815.405.6279
(Durocs, Hamps, Yorks)

WHEWELL'S PROFIT PRODUCERS
Russell Whewell
110 E. Main-Ferris
Carthage 62321
Farm: 217.746.8201
Nick: 319.594.6659
(Durocs, Hamps, Landrace)

ZEHR FARMS
31842 Dutch Lane
Washington 61571
Phone: 309.444.4195
Curt: 309.251.7447
(Durocs)

INDIANA

COUNTRY MARKET FARMS
Stan Rush & Eric Foland Family
703 S. 600 E.
Greentown 46936
Phone: 765.461.9469
Email: ebfoland@yahoo.com
(Durocs, Hamps, Yorks)

DENHART SHOWPIGS
134 E. 800 N. Rd.
Crawfordsville 47933
Randy Denhart: 765.969.4512
Toll Free: 888.DENHART
Farm: 765.339.4713
Email: denhart@tctc.com
(Durocs, Hamps, Yorks, Spots, Crosses)

DRAKE PUREBRED FARMS
2736 N. Brick Church Rd.
Cambridge City 47327
Phone: 765.478.4802
(Durocs, Hamps, Landrace, Yorks)

FARRER STOCK FARM
Tom Farrer
6891 W. Co. Rd. 325 N.
Royal Center 46978
Tom: 574.727.0680
Taylor: 574.727.5610
Email: tom@farrerstockfarms.com
(Durocs, Hamps, Yorks, Spots, Crosses)

GEORGE & MIKE WATSON

1886 W. Greencastle Rd.
Mooresville 46158
Farm: 317.539.4968
Mike: 317.996.4055
(Hamps, Crossbreds)

HARVEY SHOW STOCK
Don L. Harvey & Sons
4127 Bath Rd.
Brookville 47012
Darrell: 765.732.3504
Dale: 765.732.3470
Don: 765.732.3188
(Hamps)

JAMES S. MCKEE
2162 E. Green Bay Rd.
Attica 47918-8034
Phone: 765.762.6362
(Yorks)

JJ GENETICS
Guy Jackson & Mike Johnson
767 E. 1100 S.
Warren 46792
Guy: 260.375.6235
Mike: 260.375.6351
Fax: 260.375.2420 *51
(Durocs, Hamps)

KENT BRATTAIN & FAMILY
263 Co. Rd. 900 W.
Greencastle 46135
Phone: 765.653.1254
Cell: 765.720.3305
(Durocs, Hamps, Landrace)

KILMER SWINE FARMS
Dave Kilmer
1622 N. 900 E.
Monticello 47960
Phone: 574.943.3239
Jim: 765.412.6325
(Durocs, Hamps, Yorks)

RBT SHOWPIGS
Ron Knoblett
302 S. Jefferson Street
Rockville 47872
Phone: 765.366.8613
Email: ron@scaffoldking.com
(Durocs, Yorks, Crossbreds)

ROBIN RIDGE FARMS
Mike Fagg
1830 St. Rd. 246 W.
Clay City 47841
Phone: 812.939.2534 or
812.249.2851
Fax: 812.939.2534 *51
(Durocs, Hamps, Yorks)

TEMPEL GENETICS
Bill Tempel
14693 N. U.S. 231
Gentryville 47537
Phone: 812.937.2620
Fax: 812.937.2621
(Landrace, Yorks)

TOP-LINE GENETICS
Tom & Jan Disque
8374 N. 100 E.
Seymour 47274
Farm: 812.497.2830
Cell: 812.521.2058
(Durocs, Hamps, Yorks)

WHITESHIRE/HAMROC

Mike Lemmon
1818 E. 600 N.
Albion 46701
Phone: 800.825.2929 or
260.636.7304
Fax: 260.636.3703
(Durocs, Hamps, Landrace, Yorks)

YOUNG & GUARD
Del Guard
8614 W. 750 N.
West Lafayette 47906
Home: 765.583.4657
Tracie Knotts: 765.427.3048
Email: youngandguard@ffni.com
(Hamps, Crossbreds)

IOWA

BOMBELI & SONS SHOWPIGS
Matt Bombeli
18824 Zephyr Ave.
Delta 52550
Phone: 641.660.5741
Email: iowashowpigs@gmail.com
(Chesters, Yorks, Crossbreds)

BRINK PREDICTABLE GENETICS
Jerry D. Brink
23098 Gunder Rd.
Elkader 52043
Phone: 563.245.2048 or
563.245.1639
(Durocs, Hamps, Yorks)

CAIN SUPER SIRE
Earl Cain & Family
19760 490th St.
Chariton 50049
Office: 641.774.5397
Earl: 641.203.1391
Dusty: 641.203.2257
Lee: 641.203.4447
Fax: 641.774.5447
(Hamps, Yorks, Durocs, Crossbreds)

DANIEL R. BURZLAFF
2331 185th St.
Delmar 52037
Phone: 563.659.9042
(Hamps, Yorks)

DCM HAMPS & DUROCS
David Martin
1482 County Home Rd.
Marion 52302
Phone: 319.854.7180
Fax: 319.854.7180
(Durocs, Hamps)

HILLCREST FARMS
Keith Wilson
2730 Oak Ave.
Guthrie Center 50115
Phone: 641.524.5384
Fax: 641.524.5360
(Durocs, Hamps, Landrace, Yorks)

HILLTOP FARMS
Richard Swenson
2210 623rd Ave.
Albia 52531
Phone: 641.932.3676
(Hamps)

HUINKER DUROCS LTD.
John & Ruth Huinker
1854 Middle Calmar Rd.
Decorah 52101
Phone: 563.532.9646
(Durocs)

WAYNE J. HUINKER
2091 Middle Ossian Rd.
Decorah 52101
Phone: 563.382.9814
Cell: 563.380.1372
(Hamps, Yorks)

IVERSON HAMPS & YORKS
Ronald & Marcia Iverson
275 E. 140th St. N.
Grinnell 50112
Phone: 641.236.3713
Cell: 641.990.0875
(Hamps)

JAYME & SCOTT SIEREN
1235 210th St.
Keota 52248
Phone: 641.636.2153
(Hamps, Landrace, Yorks)

KERNS FARMS
Steve & Becky Kerns
3354 140th St.
Clearfield 50840
Phone: 641.336.2952
Fax: 641.336.2450
(Durocs, Landrace, Yorks)

MAREK LAND & LIVESTOCK
Timothy & Heather Marek
2659 170th St.
Riverside 52327
Phone: 319.648.4000
Cell: 319.330.5171
(Hamps, Yorks)

McCULLOH FAMILY GENETICS
Chris & Murl McCulloh
2266 180th St.
Delmar 52037
Phone: 563.249.1108
(Durocs, Yorks)

WUEBKER FAMILY
SWINE GENETICS
Marvin Wuebker
851 Pleasant St.
Rockwell City 50579
Phone: 712.297.7644
Email: mcwuebker@yahoo.com
(Yorks, Large Whites, Durocs)

ROHRIG YORKS & SHOWPIGS
Matt Rohrig
2543 305 St.
P.O. Box 155
Orient 50858
Phone: 641.344.8869
(Yorks)

STEWART'S DUROC FARM INC.
Doug Stewart
1750 212th St.
Waverly 50677
Phone: 319.352.1709
Cell: 319.231.0676
(Durocs, Hamps, Yorks)

WALDO FARMS OF IOWA
1889 210th St.
Winterset 50273
Phone: 800.869.0425 or
515.462.1240
(Durocs, Landrace, Yorks)

WINMOR FARMS
Don & Jennifer Slagle
9316 Wickham Dr.
Johnston 50131
Phone: 515.418.0634
Email: info@winmorfarms.com
(Hamps, Yorks)

KANSAS

MESSNER FARMS
1824 Hwy. 75
Caney 67333
Richard Anderson: 620.879.5229
Brett Anderson: 620.870.9070
(Durocs, Hamps, Yorks)

KENTUCKY

GEORGE WATSON
1860 Watson Rd.
Hillsboro 41049
George's Cell: 606.748.1317
(Yorks)

VISTA BROOK FARMS
Dale, Kevin & Tim Ellis
3211 Webster Rd.
Danville 40422
Phone: 859.332.7623
Kevin's Cell: 859.583.0380
(Durocs, Hamps, Landrace, Yorks)

MICHIGAN

WOODEN PUREBRED
SWINE FARM
Dennis Wooden
61607 Crooked Creek Rd.
Cassopolis 49031
Phone: 269.445.8066
Fax: 269.445.3001
(Durocs, Hamps, Yorks)

MINNESOTA

BOYUM GENETICS
Steve Boyum & Family
9144 Cty 30 Blvd.
Wanamingo 55983
Phone: 507.824.2976
(Durocs, Yorks)

COMPART'S BOAR STORE INC.
Dean, Chris & Jim Compart
40750 441st Ave.
Nicollet 56074
Dean: 507.225.3737
Chris: 507.246.5012
Jim: 507.246.5179
Fax: 507.225.3075
(Durocs, Landrace, Yorks)

COMPART'S PRIMARY SPF
Jim Compart
12126 293rd Ave.
Princeton 55371
Jim: 507.246.5179
Fax: 507.246.5339
(Durocs, Landrace, Yorks)

VALLEY YORKSHIRES
Rann, Val, Zach and Katie Loppnow
65628 386th Ave.
Lake City 55041
Rann: 507.421.3877
valleyyorks.com
(Yorks)

MISSOURI

BROOKE BROTHERS
Michael & Dave Brooke
13623 CR 120
Braymer 64624-9311
Phone: 660.645.2855
(Durocs, Hamps, Yorks)

FORKNER FARMS/
TRULINE GENETICS
Everett Forkner
9282 E Indian Line Rd.
Richards 64778
Phone: 417.484.3306
Toll-free: 877.489.0570
Fax: 417.484.3317
Email: efortkg@gmail.com
(Durocs, Hamps, Landrace, Yorks)

HEIMER HAMPSHIRE
Jesse Heimer
555 Birch Lane
Taylor 63471
Jesse's Cell: 217.257.0138
Email: heimerhamps@gmail.com
Web: www.heimerhamps.com
(Hamps, Yorks, Berks)

JOE ROBERTS
6482 E. Farm Rd. 48
Fair Grove 65648
Phone: 417.759.2824
(Durocs, Hamps)

MARTIN FAMILY SHOWPIGS
2080 Dent County Road 2200
Rolla 65401
Phone: 573.247.6083
Email: martincattleco@gmail.com
(Hamps, Yorks)

MCCLOUD FARMS INC.
John, Melanie & Katie
McCloud
805 N.W. Hwy. A
Trenton 64683
Phone: 660.485.6468
Email: husker@grm.net
(Durocs, Yorks)

ORAM BROTHERS
36968 E. St. Hwy. 146
Gilman City 64642
Phone: 660.876.5302
(Yorks)

ROBISON GENETICS
Randy & Jimmy Robison
5536 S.W. Simental Rd.
Polo 64671
Phone: 660.354.2480
Randy: 660.354.3202
(Durocs, Hamps)

WOLF BROTHERS
Gregg, David & Adam Wolf
4497 Hwy. W.
Chillicothe 64601
Ron: 660.646.9210
Adam: 573.289.3311
Gregg: 417.388.1348
Email: wolfpigfarm@gmail.com
(Hamps, Yorks, Crossbreds)

NEBRASKA

BAADE GENETICS
Kyle Baade
58135 722 Rd.
Plymouth 68424
Kyle's Cell: 402.239.2229
Fax: 402.228.0306
(Hamps, Yorks)

JOY GENETICS
Sarah & Laura Joy
5130 F Rd.
Dunbar 68346
Phone: 402.873.4406
Office/Kirb: 402.873.6648
Fax: 402.873.6682
(Durocs, Hamps, Yorks)

S&D SHOWPIGS
Scott Dean
74398 342 Ave.
P.O. Box 245
Imperial 69033
Cell: 970.560.6733
Email: s_and_dshowpigs2@yahoo.com
(Berks, Chesters, Durocs, Spots, Yorks, Crossbreds)

STEVEN FAUSS
P.O. Box 4
Nickerson 68044
Phone: 402.721.8057
(Hamps)

WALDO FARMS INC.
P.O. Box 8
DeWitt 68341
Phone: 800.869.0425
Fax: 402.683.6605
(Durocs, Landrace, Yorks)

NORTH CAROLINA

LOOPER FARMS
Wesley Looper
4695 Petra Mill Rd.
Granite Falls 28630
Phone: 828.396.9102
(Hamps, Landrace, Yorks)

QUINN SHOW PIGS
William Quinn
1273 E. Wards Bridge Road
Kenensville 28349
Phone: 910.271.2756
(Durocs, Yorks, Hamps and Berks)

SHARP FARMS
Alan Sharp
5171 Hwy. 581
Sims 27880
Phone: 252.235.3786
Fax: 252.235.4611
(Durocs, Yorks)

REFERENCE

OHIO

BOBLENZ GENETICS & GREG EDMONDSTONE
Kevin Boblenz
7620 Agosta-Larve Rd.
New Bloomington 43341
Phone: 740.499.2227
Cell: 740.361.4040
(Durocs, Yorks)

ISLA GRANDE FARMS
Rick L. Fogle
2730 Harding Hwy. W
Marion 43302
Phone: 740.382.1580
Rick's Cell: 740.225.2541
(Durocs, Hamps, Yorks)

PARRISH FARMS
Howard, Frank & Steve Parrish
5140 County Road J
Edon 43518
Phone & Fax: 419.272.2852
Howard: 419.553.6042
(Durocs, Hamps, Yorks)

SANTORO SWINE GENETICS
Tony or Annette Santoro
6725 Oak Street Ext
Lowellville 44436
Farm: 330.536.8346
Cell: 330.360.0078
Email: ssgenetics@zoominternet.net
(Hamps, Yorks, Crossbreeds)

WENDT LIVESTOCK
14730 Middleburg-Plain City Rd.
Plain City 43064
Kevin: 419.566.1599
Website: www.wendtlivestock.com
(Durocs, Hamps, Crossbreeds)

OKLAHOMA

HOFSCHULTE FAMILY
P.O. Box 263
Wyandotte 74370
Home: 918.542.6410
Phillip: 918.231.8740
Nick: 918.541.7893
Chris: 918.961.1679
Email: phil@hofschultesires.com
(Durocs, Hamps, Yorks, Crossbreeds)

LANCASTER HAMPSHIRE
Joe & Georgia Lancaster
17064 Co. Rd. 3500
Ada 74820
Home: 580.332.7394
Joe Cell: 580.421.6583
Email: lancasterllc@hughes.net
(Hamps)

OREGON

GOURLY FAMILY FARMS
Mark & Joyce Gourley
2280 Primrose Loop
Philomath 97370
Phone: 541.929.6264
(Yorks)

TENNESSEE

BART JONES
466 Red Hill Rd.
Lafayette 37083
Phone: 615.666.3098
(Durocs, Landrace, Yorks)

DEREK & ABI BARTHOLOMEW
2965 Laster Rd.
Huron 38345
Phone: 731.968.5230
Cell: 731.614.4232
(Durocs, Crossbreeds)

TEXAS

5A FARMS
Tim Armour
780 ACR 2205
Palestine 75801
Phone: 903.538.2175
(Yorks, Crossbreeds)

ALBERT'S YORKSHIRE FARM
John Albert
1442 Haeckerville Rd.
Cibolo 78108
Phone: 210.658.5017
(Hamps, Landrace, Yorks)

CARL KENT & SONS
Box 62
Pottsboro 75076
Home: 903.786.9423
Carl's Cell: 903.271.5128
(Hamps, Yorks, Crossbreeds)

McCLEERY FAMILY FARMS
Cody McCleery
351 West Seaberry Ave
Poolville, TX 76487
Cody home: 817.594.3625
Cody: 817.613.6666
Email: doctorduroc@att.net
(Durocs, Hamps, Yorks, Crossbreeds)

REAL HOG FARMS
Charles Real
15492 Real Rock Rd.
Marion 78124
Phone: 830.914.2833
Charles' Cell: 210.827.7351
Fax: 830.914.3437
(Durocs, Hamps, Yorks)

WISCONSIN

BADGER SWINE
Bill Krieg & Mark Justmann
N. 4477 Co. Rd. 1
Lowell 53557
Bill: 920.342.8105
Mark: 920.344.0230
(Durocs, Hamps, Yorks)

KUHLLOW GIRLS SHOWPIGS
Chelsea, Kallista & Darin Kuhlow
407 Allen St.
Clinton 53525
Chelsea: 608-774-2610
Darin: 608-436-0217
email: chelsea@kuhlowgirls.com
(Durocs, Yorks, Crossbreeds)

NUTTLEMAN FARMS
Steve Nuttleman
N. 55725 CTH DE
Bangor 54614
Steve: 608.386.8803
(Durocs, Yorks, Polands)

ROBERT WALSTRA & FAMILY
W 8578 Lake Emily Rd.
Waupun 53963
Phone: 920.763.3131
(Hamps)

TOM KNAUER FAMILY
352 N County Rd. M
Avalon 53505
Phone: 608.883.2838
(Hamps, Landrace)

TOM RAKE FAMILY
6840 Schumacher
Waunakee 53597
Phone: 608.849.7458
Fax: 608.849.7461
(Durocs, Hamps, Yorks)

TRIPLE L SHOWPIGS
Darren, Laura, Austin & Natalie Lynd
5027 S. Reid Rd.
Janesville 53546
Phone: 608.676.5816
(Durocs, Hamps, Yorks)

WILSON'S PRAIRIE VIEW FARM
Scott & Alex Wilson
N. 5627 Co. Hwy. DD
Burlington 53105
Scott: 262.492.6601
Alex: 262.492.6664
Fax: 262.763.6145
(SPF Durocs, Hamps, Landrace, Yorks)

Want to be in the Seedstock Source?

It's as easy as 1-2-3

ONLY
\$75/year

1. Call the *Seedstock EDGE* staff at 765-463-3594 or email seedstockedge@nationalswine.com with your information
2. Pay the \$75 one-year fee
3. Look for your listing in the next nine issues of *Seedstock EDGE*

Breeder's Choice Customer Appreciation Bred Gilt Sale

SATURDAY, DEC. 10 6:30 p.m. EST

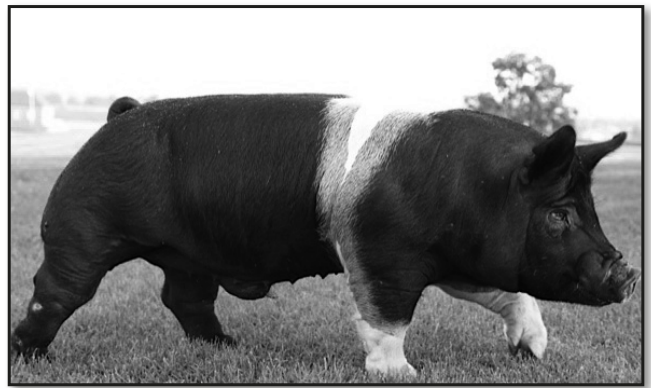
Preble County Fairgrounds, Eaton, Ohio

Sale Day Phone: 740.606.0031

Auctioneer: Kevin Wendt, Ohio • NSR Rep: Blaine Evans 765.490.3731



AMPLIFIER (Surge 294-5 x The Journey)



BUMPERJACK (Bumpercar x Point Maker 118-3)



KING PAPPY (Kingdom Comes x See In Red)



MOST WANTED 12-3
(Most Wanted x {True Grit x Role Model})

This sale will feature gilts bred for late-December, January and February purebred and crossbred litters. Selling approximately 55-60 bred gilts!

This year will include **Berkshire, Chester White, Duroc, Hampshire, Hereford, Poland China, Spotted, Yorkshire** and **Crossbred** gilts!

Check our website for current information! www.breederschoicesires.com



Tony & Dicka Nye

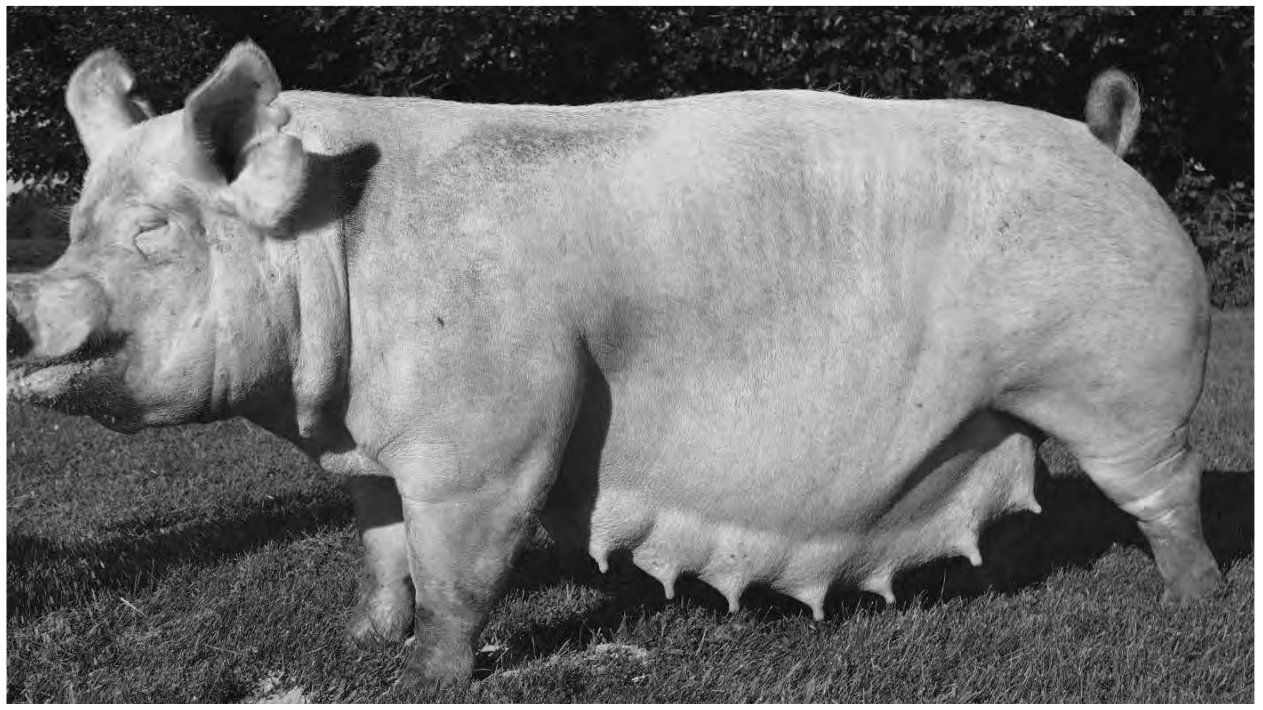
4815 St. Rt. 753 SE • Washington C.H., OH 43160

Home: 740.636.8465 • Cell: 740.606.0031 • thenyes@ohiohills.com

Seedstock
EDGE

McCulloh Family Genetics

Breeding Hogs for the Future



Miss Turk 5-6 {4th-Parity Sow}
Reg #: 558306006

**“The main thing is to keep the
main thing the main thing.”**

CHRIS AND MURL MCCULLOH

2266 180th Street

Delmar, Iowa 52037

563.249.1108

Check out our website if you are serious about
improving the Yorkshire breed.

mccullohfamilygenetics.com

Check out these
Pennsylvania
SWINE BREEDERS

at the 101st Pennsylvania Farm Show Bred Gilt Sale

Holloway Genetics :: 717-515-4147

Neutzel Yorkshires - Conrad Neutzel :: 717-324-5171

Ben & Lawson Neutzel - Jon Neutzel :: 717-968-2735

JT Parlett - Jim Parlett :: 717-825-1620

Ebersole Showpigs - John Ebersole :: 717-919-4527

Rattlesnake Mountain Farm - Mark Hall :: 814-574-3274

Kevin Pfautz :: 717-945-2730

Carl Rabenold :: 610-683-5439

PA York Association - Conrad Neutzel :: 717-324-5171

PA Hampshire Breeders - Dave Holloway :: 717-515-4147

Todd Bennecoff & Family :: 610-285-6582

John & Donna Strawbridge :: 610-799-5593

Ken Wetzel :: 814-845-2181

SHOW: JAN. 6 • 10 a.m.

SALE: JAN. 7 • 9 a.m.

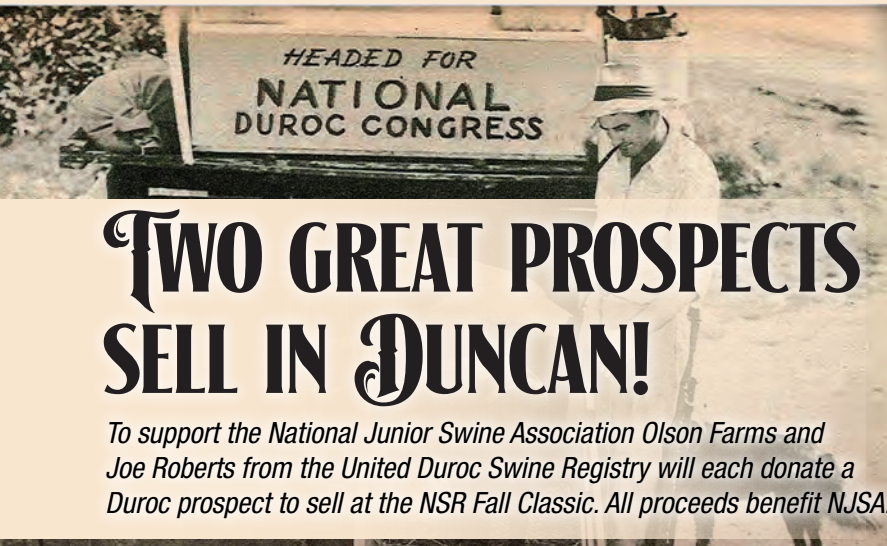
**FARM SHOW COMPLEX
HARRISBURG, PA.**

Contact the consignors for more information about their entries.
Entries will also be listed on showpig.com and bachmanauctioneer.com.

Blaine Evans: 765.490.3731 • Harry Bachman 717.867.1809

Great Genetics for GREAT YOUTH

Designed by
Seedstock
EDGE



TWO GREAT PROSPECTS SELL IN DUNCAN!

To support the National Junior Swine Association Olson Farms and Joe Roberts from the United Duroc Swine Registry will each donate a Duroc prospect to sell at the NSR Fall Classic. All proceeds benefit NJSA.



RES. CHAMPION OVERALL BARROW & CHAMPION DUROC BARROW, 2016 NJSS
Raised by Olson Farms



RES. CHAMPION DUROC GILT, 2015 SAN ANTONIO STOCK SHOW
Raised by Joe Roberts

Thank you to Olson Farms and Joe Roberts for their donation and support of the National Junior Swine Association.

Olson Farms

BLANE, KRISTI, BRADEN, KELTEN & LUKE OLSON
1381 920 AVE :: LINCOLN, IL 62656
217.280.0023

olsonfarmsdurocs.com

Joe Roberts

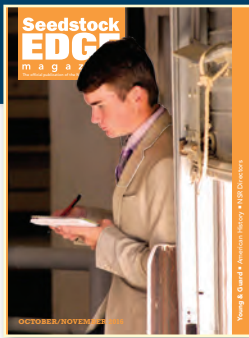
Swine Genetics **JRE**

6482 E FARM RD 48 :: FAIR GROVE, MO 65648
417.766.3754

joerobertsgenetics.com



any closer and you'd be RINGSIDE



DON'T MISS ONE ISSUE!

Seedstock EDGE is the premier publication of the purebred swine industry.

Subscribe or renew online at **NATIONALSWINE.COM!**

- New subscription \$25 One Year (U.S.)
- Renewal \$60 One Year First Class (U.S.)
- \$60 Three Years (U.S.)
- \$150 One Year (Foreign & Canada)

Please allow 8-10 weeks for the first issue.

SUBSCRIBER NAME/FARM



ADDRESS

CITY

STATE

ZIP

PHONE #

EMAIL

PAYMENT INFORMATION

→ All fields in red are required to process credit cards

CHECK

CREDIT CARD

Return with payment to:
NATIONAL SWINE REGISTRY
2639 Yeager Road
West Lafayette, IN 47906

NAME ON CARD

Check one



CARD #

3-DIGIT SECURITY CODE
(back of card)

EXP. DATE



TOTAL AMOUNT ENCLOSED



ARIZONA
NATIONAL

GILT SALE

DECEMBER 29, 2016

SHOW @ 7:30 AM | SALE @ 6:00 PM

SELLING A MINIMUM OF 35 ELITE
PUREBRED & CROSSBRED GILTS

2015 SUPREME CHAMPION & CHAMPION YORKSHIRE
EXHIBITED BY: CALEB JOHNSON BRED BY: RBQ SHOW PIGS
SOLD FOR \$16,000 TO OTTENWALTER SHOWPIGS

JEFF MAYNARD 602-790-3733 | SHANNON SCHULZ 623-764-1160



www.anls.org

ISLER GENETICS

BRED GILT *Spectacular*

December 10, 2016 **1** RICHWOOD, OHIO
p.m.

SCOTT ISLER: 740.262.2850 | BILL ISLER: 740.815.2910
NATHAN ISLER: 740.225.5358 | FARM/OFFICE: 740.494.2410
NSR REP., BLAINE EVANS: 765.490.3731



2-5 DUROC

(Bold Ruler x Red Sensation) Due Jan. 2 to High Rent



288-9 HAMP/CROSS

(Dillinger x Jagger) Due Jan. 11 to Pop Your Collar



393-10 YORK

(Maximus x Mob Rules) Due Dec. 28 to Musketeer



247-4 YORK/CROSS

(Decidedly Different x Bone Daddy) Due Dec. 29 to Tweet This

Check our website for a complete list of sale offerings.

DELIVERY ARRANGEMENTS CAN BE MADE TO MOST AREAS.

ISLERGENETICS.COM

RICK & NIKI WHITMAN

RICK 515-540-1119 // **NIKI** 512-540-1490 // **RWGENETICS@GMAIL.COM**



Quitt to perform!

BRED FEMALE SALE

THURSDAY, DEC. 8, 2016

Showpig.com

Great Females IT'S WHAT WE DO!



CH. DUROC GILT NBS®
Sired by HD Centerfold



CH. GILT OVERALL NBS® JR. CLASSIC
Dam sired by HD Fullback



SUP. OVERALL & CH. DUROC GILT COW PALACE
Dam purchased as a bred gilt from us online



RES. CH. DUROC GILT IOWA SF OPEN SHOW
Dam sired by HD Automatic



CH. DUROC GILT 2015 SOUTHWEST REGIONAL
Sired by HD Automatic



RES. OVERALL & CH. DUROC GILT 2015 NJSS
Sired by HD Royalty

BRED GILTS AVAILABLE THIS WINTER PRIVATELY

Huinker Durocs Ltd.

JOHN & RUTH HUINKER

1854 Middle Calmar Road, Decorah, IA 52101

563.532.9646 • Cell: 563.380.6565 • jhuinker@acegroup.cc • www.thepigpage.com

Showpigs, breeding stock & semen available year round!

DMP GENETICS

Turn the Page DISPERSAL SALES

WEDNESDAY • NOV. 23, 2016

MONDAY • DEC. 12, 2016

MONDAY • FEB. 6, 2017

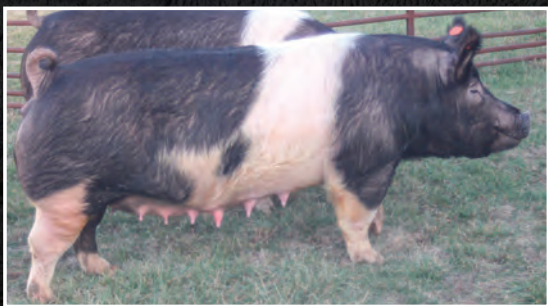
Sales hosted by Showpig.com



14-2 Quiet Giant sow

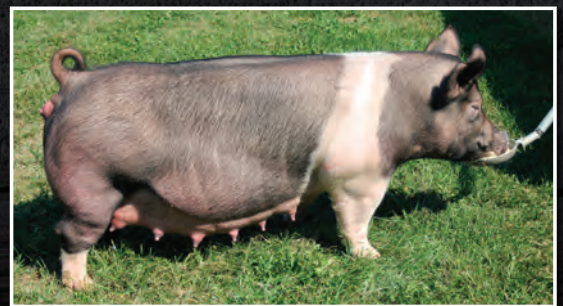


25-7 Affirmative sow



2-8 Black Label 5-1 sow

For more
information visit
Peterfarms.com



3-5 Home Grown sow



Peter Farms

DEPENDABLE GENETICS

1969 E. 1250th St. » Mendon, Ill. » 62351
(217) 257-1381 » www.PETERFARMS.com

Designed by
Seedstock
EDGE

January & February **SAVINGS**

ALL Exotics \$100 or LESS ☀ ALL Purebreds \$50



THE BOSS

The Duke x Renig
Bred by Coulson Showpigs

AFTERPARTY

Skywire x Visionary
Bred by Weisinger Farms



1-855-PBG-PIGS
PremiumBlendGenetics.com
909 N. 900 W. Arlington, IN 46104



2016 ILLINI WINTER BRED GILT CLASSIC

Saturday, Dec. 3

JOLIET JUNIOR COLLEGE
JOLIET, ILLINOIS

Entry Deadline: Nov. 25

Entry Fee: \$20/head

Entries may be made after the deadline for \$40/head

- Check in by 9 a.m.
- Sift starts at 12 p.m. | Sale to follow
- Doors open from 6-8 p.m. Dec. 2
- Online preview *showpig.com* Dec. 2

Consignments open to the public

Auctioneer: Kevin Cooper

NSR Rep.: Michael Lackey 765.427.3733

Contacts: Derek Moore 618.599.2885

Ty Olson 217.491.8364

Robbie Smith 217.671.6341

Designed by
Seedstock
EDGE

ENTRY FORM

Breeder Name: _____

Bred Gilt/Sow Breed: _____ Parity: _____ Due Date: _____

Pedigree: _____ Service Sire: _____

Age: _____

Bred (check one): Purebred Crossbred

Email entry form to tyolson8364@gmail.com or print and mail to:

Ty Olson
1117 Lafayette St.
Beardstown, IL 62618

PRINTABLE ENTRY FORM on showpig.com

Find your **CHAMPION** BRED GILT SALE December 6, 2016

Showpig.com



**GRAND CHAMPION PUREBRED GILT OVERALL
& CHAMPION DUROC GILT 2016 WPX JR. NATIONAL**

We produced this gilt, and she will have a littermate gilt offered in the sale.

FIRE AWAY \$65,000 TOP-SELLING BOAR 2016 WPX

This boar was purchased from us in dam in last year's bred gilt sale for \$1,500.

MOST GILTS WILL BE BRED TO THE BOARS BELOW.



STRUCTURE

American Outlaw x Full Back



HE'S THE LIGHT

He's The One x Light 'Em Up
Three littermate gilts will be offered



DIMENSIONAL

American Outlaw X New Dimension



**STEWART'S
DUROC FARM**

1750 212th St., Waverly, IA 50677
DOUG STEWART: 319.352.1709
CELL: 319.231.0676
stewartsdurocs@gmail.com

STEIN & STEWART genetics

7912 Newton Road, Odessa, MO 64076
CARL STEIN: 816.633.4343
CELL: 816.914.4914
carlvstein@gmail.com



stewartsdurocfarm.com

LU SWEEPS GA

The Lindner United team SWEPT the 2016 Georgia National Junior Livestock Show. Congratulations to the Champions - **the Lindner United team is so proud!**



Courtney Conine
Grand Champion Barrow



Savannah Page
Grand Champion Breeding Gilt



Savannah Page
Grand Champion Market Gilt



Savannah Page
Reserve Grand Barrow



 /LindnerUnited  @LindnerUnited  @LindnerUnited

To locate a dealer near you visit LinderUnited.com/Dealers

THOMPSON BROS. GENETICS

bred to
make an

IMPACT

Bred Sow & Gilt Sale

Tuesday, December 6 Showpig.com



Sows & gilts like these, bred to boars like these.



AMPED UP

GAIN CONTROL x BONE BUZZ
Champion York Boar, 2016 STC

PLEASANTVILLE, OHIO

BROC: 740.808.1041

THOMPSONBROSGENETICS.COM

REAL DEAL

SKY WIRE x BONE THUG
\$75,000 Grand Champion
2016 Crossbred Classic

Feeding Champions

FOR MORE THAN 33 YEARS



Show Contender


- INCENTIVE PROGRAM -

Win a \$500 Gift Certificate for winning Grand Champion at your local fair, state fair or national show!

\$250 dac® Certificate will be awarded to Reserve Grand Champions!

* Must have a dac® dealer and dac® Territory Manager sign off to claim products.

dac

Direct Action Co.
PO Box 2205
Dover, Ohio 44622
(800) 921-9121 

GET YOUR PRODUCTS AT WWW.FEEDDAC.COM OR FROM A DEALER NEAR YOU!

For more information, contact Rusty Bingham at Lean Value Sires or any of our dac® Territory Managers

"IT MAKES A WORLD OF DIFFERENCE"

ND

WINTER SAVINGS SALE

ALL BOARS
-60% OFF-
NO OVERRUN

OCTOBER 24 THROUGH MARCH 16

TAKE ADVANTAGE OF THIS GREAT
PRICING BY PRE-ORDERING IN ADVANCE!
DISCOUNTS WILL BE APPLIED TO
CUSTOMERS WITH EXISTING ORDERS.



QUEST

SEE MY POINT x MONSTER PIPE
OFF THE FARM PURCHASE FROM BATES



TRASH TALK

LOUD MOUTH x ENTOURAGE
RES. CHAMPION SPOT BOAR AT 2016-INSF



AIR JORDAN

THE PROPHET x UNTOUCHABLE 159-2
OUR PICK AT 2016 WPX



LEANVALUESIRES.COM

1-800-972-8766 • NEW CARLISLE, OH



JGR *Bred with a purpose!*

Designed by
Seedstock
EDGE



JLM2 Carry On 21-1 x JLM9 Augusta 18-1

LEGACY

A class winner from the Indiana State Fair. He has become one powerful herd boar that is as square as they come. He produces very powerful and consistent young gilts.

LETHAL

JLM5 Legacy 10-1 x BEB3 Tiger 9-6

Res. Champion Hampshire Boar, 2016 STC

I really do enjoy raising Hamps, and this boar was fun. He is heavy boned and big footed with a great hip and rear leg.

Owned by Premium Blend.



57-4 Hamp Gilt

Legacy x Tiger

Selling December through March bred gilts and sows like this offered privately!
Call for details.



Call Jim for semen on Grimm herdsires.

10316 N. Ave. • Maynard, IA 50655

Jim cell: 563.920.7590

www.grimmpurebreds.com



Mature photo of Power Up

POWER UP

CD03 Power On 282-7 x JGR0 Bootlegger 210-6

Every hog in this pedigree has made a positive contribution to our herd and the breed. Power Up is massive in body, muscle and width and is extremely square coming and going.



PATH FINDER

JGR4 Power Up 89-9 x CNDN03 Thumbs Up 2-10

Top-Selling Yorkshire Boar, 2016 STC

This is a strong-pasterned, clean-fronted boar with great rear legs. Owned by Shipley Swine Genetics.

4-2 York Gilt

Power Up x Skull

Selling December through March bred gilts and sows like this offered privately!

Call for details.



Everyone at A Cut Above wishes you and your family a

Happy Holidays



HOT OFF THE PRESS

All Shook Up x Chili Pepper (Press 2's littermate)
Bred by Levi Canales
Reg: 373460007 • Ear Notch: 44-7 • Stress Negative

35 TO LIFE

Lifetime x Iconic x Dam of Get In
Bred by Levi Canales

Reg: 368976003 • Ear Notch: 35-3 • Stress Negative



UNCHARTED


All Shook Up x Chili Pepper (Press 2's littermate)
Bred by Levi Canales
Reg: 373460005 • Ear Notch: 44-5 • Stress Negative



402-366-6500

402-732-6777

www.acutabovesires.com

FIND US ON 



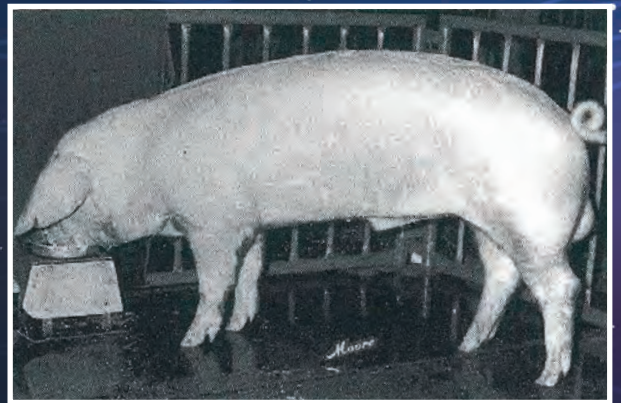
THROUGH

the Years

Just like the times, champions have evolved through the years. As production priorities changed so has the ideal animal.



This Landrace barrow from Mears Landrace Farm, Iowa, was featured on the cover of *The American Landrace* in October 1962. He was named the Grand Champion Barrow at the National Conference and the Iowa State Fair.



The Grand Champion Boar at the Landrace In Louisville show, in 1982, was exhibited by Bob Grohmann, Illinois, and purchased by Harold Calhoun, Michigan, for \$600.



Tom Knauer and Family from Wisconsin drove the 2012 Hog College® Landrace Boar at the National Barrow Show® in Austin, Minnesota. The boar was purchased by Gunderson Farms of Minnesota, for \$750.

REFERENCE

Datebook

NOVEMBER

- 13 Cirlice of Gold Pig Sale Second Circle, El Reno, Okla.
- 13 Triple B Online Bred Female Sale, showpig.com
- 13 WinMor Farms Online Sale, showpig.com
- 16-19 NSR Fall Classic, Duncan, Okla.
- 23 Peter Farms Turn the Page Sale, showpig.com

DECEMBER

- 2 January Seedstock EDGE ad deadline
- 3 Illini Winter Bred Gilt Classic, Noon, Joliet, Ill.
- 6 Baade-Penner Online Bred Female Sale, showpig.com
- 6 Stewart's Duroc Farm Online Bred Gilt Sale, showpig.com
- 6 Thompson Brothers Bred Sow & Gilt Sale, showpig.com
- 7 Albright Swine Farms Online Bred Gilt Sale, showpig.com
- 7 Olsen Yorkshires Online Bred Gilt Sale, olsenyorks.com
- 8 RW Genetics Bred Female Sale, showpig.com
- 8 Triple B Online Bred Female Sale, showpig.com
- 10 Breeder's Choice Customer Appreciation Bred Gilt Sale, 6: 30 p.m., Eaton, Ohio
- 10 Cain Super Sires Online/Phone Bred Gilt Sale, cainfarms.com

- 10 Isler Genetics Bred Gilt Spectacular, 1 p.m., Richwood, Ohio
- 12 Peter Farms Turn the Page Sale, showpig.com
- 13 Moyer's Genetic Edge Online Bred Gilt Sale, showpig.com
- 15 NSR Winter Type Conference and NJSA Southeast Regional entry deadline
- 27-Jan. 1 Arizona National Swine Show, Phoenix, Ariz.

JANUARY

- 6 Pennsylvania Farm Show Swine Show, 10 a.m., Harrisburg, Pa.
- 7 Pennsylvania Farm Show Sale, 9 a.m., Harrisburg, Pa.
- 18 February/March Seedstock EDGE ad deadline
- 25-29 NSR Winter Type Conference and NJSA Southeast Regional Perry, Ga.

FEBRUARY

- 1 NSR Southwest Type Conference entry deadline
- 6 Peter Farms Turn the Page Sale, showpig.com
- 8 Steve Cobb and Family Online Sale, showpig.com

MARCH

- 1-4 NSR Southwest Type Conference, Belton, Texas
- 15 Steve Cobb and Family Online Sale, showpig.com

Wayne J. Huinker

Decorah, Iowa
563.382.9814
(c) 563.380.1372
thepigpage.com

PIGS AVAILABLE YEAR ROUND. BRED GILTS AVAILABLE!

WJH5 BUZZARD BILLY x 95-11 BULK

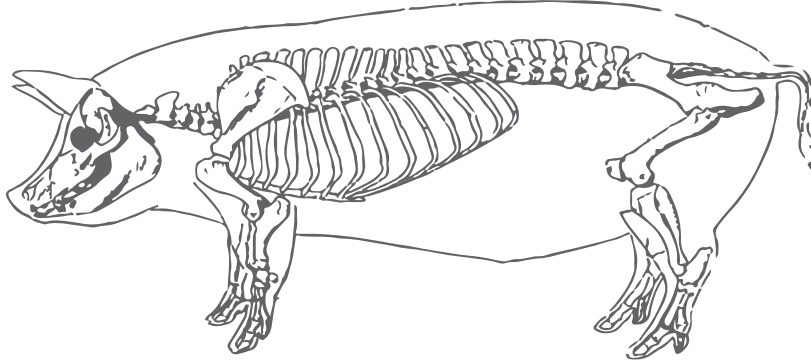
UP YOUR ODDS is a prime example of a solid, line bred breeding program. He has a huge ribcage, cat-like soundness and tremendous athleticism. He comes from a high-quality litter, with two shots of ROUGHNECK, two shots of PRIMARY STASH and five shots of HSO JUDY 3-8 (who thrived for 16 parities). Dam is at 31.2 pigs/sow/year/weaned!

UP YOUR ODDS will make high-quality, productive females.

NEW!
Semen Available

WJH6 UP YOUR ODDS 5-6

Form to Function



The importance of femininity

by **Wayne Huinker** | Wayne J. Huinker Yorkshires

There should be a difference between male and female hogs. Females should be longer about their face and neck. They should also have finer skin texture, in comparison to a male, who is more massive in his features. Reproductive function in a female can start in the rear. Vulva size is a very critical part of her anatomy. The shape, and most importantly, the size makes a difference at mating and farrowing time. A small vulva can make it hard to detect heat, and it can make natural mating almost impossible. Underline quality has several categories – texture, numbers and udder attachment. You want refined nipples that point straight down. The rows of nipples should not have belly tissue protruding between them. Extra belly tissue makes for inaccessible nipples for baby pigs. A six and six underline is required to register purebreds, but I prefer seven and seven. Rear udder attachment is more of a “dairy cow” term, but it also applies to sows. Ideally, we want the udder sections to stay attached to the belly of the sow. A mature, pregnant sow udder close to farrowing should look like a half moon. Big, bulky udders make it difficult for baby pigs to nurse on the bottom row of nipples. They also have more udder injuries in raised crates. When gilts are too frail and/or too refined in their features, the number one problem is their ability to generate quality, saleable pigs. They can struggle with overall toughness and won’t stay in the herd very long. If weaning a large litter, they are more apt to get sucked down to a less-than-ideal body score.

Evaluating femininity in little pigs takes some experience. You would probably look more at their skeletal build, at that age. I would be looking for hogs that are very angular in their build, with some length of neck and moderate amount of muscle. I also like an immature look, because you don’t want them to be done at 250 pounds.



When we select gilts to keep in the herd, we look for pigs with a bit longer muscle pattern. Short and round-hipped hogs are one of the biggest reasons many showpig people have experienced farrowing problems. Another reason for problems could be too much body condition at farrowing time.

One of the reasons you have to pay attention to reproductive traits is they are not as heritable as leanness and muscle would be. Some of the outside factors negatively affecting show gilts are what they are fed. If you put too much fat into their feed, it can affect their ovaries, udder and fertility. Some reproductive management tools commonly used in show gilts longer than the recommended time may also affect fertility and can shrink vulva size.

REFERENCE

Index to Advertisers

NSR/NJSA

NJSA Sponsorship.....	23
NSR Christmas Greeting.....	19
Seedstock EDGE Subscription	61
UDSR Donation	60

COMMERCIAL

ADM Alliance Nutrition – MoorMan’s ShowTec. 24	
Baker, Dan, West Lafayette, IN.....	51
Clayton, Tony, Jefferson City, MO	51
Conover, Al, Baxter, IA	51
Day, Chad, Kokomo, IN.....	51
Direct Action Company, OH.....	72
Kreis, Ron, Adamsville, OH	51
Lindner United.....	70
Mullins, Dave, Danville, IN	51
Naughton, Dan, Atlanta, IL.....	52
Parrish, Howard, Edon, OH	52
Prairie State Semen, Inc., Champaign, IL	51
Purple Circle, Canyon, TX.....	52
Showbox, Crockett, TX.....	51
Sunglo	9
True North Technologies	33
Wendt, Kevin, Irwin, OH.....	52
Williams, Mike, Higginsville, MO.....	52
WW-Paul Livestock Scales, Duncan, OK.....	50

ARIZONA

Arizona National, Phoenix	62
---------------------------------	----

ARKANSAS

Cobb, Steve & Family, Lake City	84
---------------------------------------	----

ILLINOIS

Illinois Duroc Breeders.....	68
Peter Farms, Mendon.....	66

INDIANA

Premium Blend Genetics, Arlington	67
Robin Ridge, Clay City.....	8
Shaffer’s Goldrush, Albany.....	6
Southern Gold Sires, Salem.....	81

IOWA

Cain Super Sires, Chariton.....	82
Grimm Purebreds, Maynard	74-75
Huinker Durocs, Decorah	65
Huinker, Wayne, Decorah	78
McCulloh Family Genetics, Delmar.....	58
Stewart’s Duroc Farm, Waverly.....	69
The Clark Families, Runnels.....	80

MISSOURI

Stein and Stewart Genetics, Odessa	69
--	----

Williams, Colt and Mike, Higginsville	36
---	----

NEBRASKA

A Cut Above, Benedict.....	76
Baade-Penner, Plymouth	18

OHIO

Breeder’s Choice, Washington Court House	57
Isler Genetics, Prospect.....	63
Lean Value Sires, New Carlisle.....	73
Moyer, Tom & Family, Wauseon	7
Santorio Swine Genetics, Lowellville.....	52
Shiple Swine Genetics, Newark	2-3
Thompson Brothers, Pleasantville	71

OKLAHOMA

Triple B Sires, Eufaula	83
-------------------------------	----

PENNSYLVANIA

Pennsylvania Purebred Breeders	59
--------------------------------------	----

SOUTH DAKOTA

Olsen Farms, Irene	11
--------------------------	----

TEXAS

RW Genetics, Anderson	64
-----------------------------	----

Dec., Jan. and Feb. litters available privately. Call for details.



Mike, Cristen, Halle & Barrett Clark
515.979.0047

Facebook.com/theclarkfamilies

FoodandSwine.com

Designed by
Seedstock
EDGE



Slats x Red Sensation x Asia x Red Draw

Full Sister to "Groundwork"

Thanks to Darrell Drake and Wade Hendricks for purchasing Groundwork at WPX.



VEISHA x 42(New Dimension x Asia)

Bred to HP Nationwide for an early January litter.

We will have a few select bred Duroc gilts available for February and March farrowing.

SOUTHERN GOLD SIRES

Mouse Trap

(Skywire x Visionary x On Top)

PEDIGREE, POWER, STYLE, COLOR!



Ludwig Hausmann

Ludwig Hausmann

Visit southerngoldsires.com to see our complete lineup of new and proven prominent sires!

Off-season pricing now available!

Visit southerngoldsires.com for more details

Designed by
Seedstock
EDGE



SOUTHERN GOLD SIRES

812-755-4306 • 812-620-2296

southerngoldsires.com



Designed by
Seedstock
EDGE

Cain SUPER SIREs

The nation's largest Hampshire recorder



19760 490th St. • Chariton, IA 50049 • Earl: 641.203.1391 • Lee: 641.203.4447 • Dusty: 641.203.2257

⌘ ONLINE/PHONE ☎

BRED GILT SALE

» CAINFARMS.COM «

SATURDAY, DEC. 10, 2016

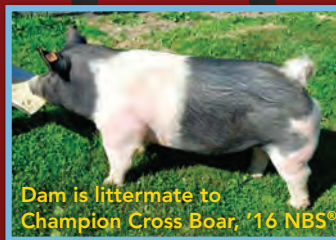
OFFERING 40 OF OUR BEST BRED GILTS!

GILTS WILL FARROW LATE DECEMBER THROUGH THE FIRST OF FEBRUARY.



110-85 CROSS
ABOVE THE REST x ALL IN
Jan. 18 to MIKE
290-89 CROSS
STIR CRAZY x TURBO CHARGE
Jan. 13 to ABOVE ALL
145-90 CROSS
ARCTIC CAT x CRAZY BONE
Jan. 6 to MADE YA LOOK

HAMP 39-7
MOSSY OAK x WOODSTOCK
Dec. 29 to THUNDERSTRUCK
DUROC 3-7
HIDDEN KING x KING
Jan. 20 to LAST MAN STANDING
YORK 8-9
TAKE IT EASY x DOUBLEWIDE
Jan. 22 to BUZZER BEATER



Dam is littermate to
Champion Cross Boar, '16 NBS®

73-1 HAMP
THUNDERSTRUCK x WOODSTOCK
Dec. 30 to CARRY OUT
159-86 CROSS
ABOVE THE REST x BIG LOG
Jan. 13 to THUNDERSTRUCK 6-5
132-90 CROSS
MADE YA LOOK x CRAZY BONE
Jan. 28 to LUMBER CAT

SHOWPIGS FOR SALE YEAR ROUND! We deliver to the WTC in Perry, Ga.

IT'S SALE TIME!!!

TRIPLE B'S ON-LINE BRED FEMALE SALES
SUNDAY, NOVEMBER 13, 2016
THURSDAY, DECEMBER 8, 2016

Both Sales will Feature Yorkshire and Crossbred Gilts and Young Proven Sows bred to this pair of Service Sires!!!



TOTAL ADDICTION

(I'M THE MAN X PIPELINE)
\$50,000 TOP-SELLING CROSSBRED BOAR
AT THE NSR 2016 STC. STRESS NEGATIVE
BRED BY: NEWCASTLE GENETICS
FEATURED SERVICE SIRE IN OUR
UPCOMING BRED FEMALE SALES.



COBRA

(BONE BUZZ X SHAKIN' HANDS)
COBRA IS ONE OF THE MOST
EXCITING, FUTURISTIC YORKSHIRE
BOARS THAT WE HAVE SEEN.
MOST OF OUR YORKSHIRE SOWS
ARE BRED TO COBRA!!!

CHECK OUT OUR WEBSITE AT
WWW.TRIPLEBSIRES.COM
TO VIEW OVER 40 BOARS OF ALL BREEDS



SHOW BOAT



TRIPLE B SIRES 410483 E 1160 RD EUFAULA, OK 74432
918-689-3290 918-689-3860 WWW.TRIPLEBSIRES.COM

ARK... PRODUCING A WONDERFUL EXPERIENCE!!!



West Coast Success!

Congratulations to Lucia Abreu and Jack Odell for their incredible successes they had showing ARK show pigs on the California jackpot circuit! As well as A HUGE THANKS to Ernest Donohoe and his entire show team for making it all possible! Cannot wait for the "Next Banner" GO GET 'EM GUYS!



As Listed in Our Online Sale:
 EN: 248-3 • Breed: Crossbred Barrow • Sire: Bear 274
 Dam's Ear Notch: 278-4 • Sire of Dam: Bear
 Weight in lbs. (as of 11.01.15): 47
 Description: These 248's read SERIOUS CONSIDERATION!!! They are the kind that will flat out feed the rest!!! You have to love the design and structure these barrows represent!!! They are about ideal in terms of their muscle patterns and skeletal width for their age and maturity... RIGHT WHERE A DOUBLE BRED BEAR NEEDS TO BE AT THIS STAGE!!!



UPCOMING 2017 ONLINE SALE DATES: 8 FEB • 15 MAR — Visit www.stevcobbfamily.com for more information.

Steve Cobb & Family

Office: 870.486.5894 • Steve: 870.219.7281 • Aaron: 870.219.4443 • scobb123@hotmail.com