

2018 National Picture Judging Contest

Results & Reasons



Each year, the National Swine Registry (NSR) sponsors the National Picture Judging Contest. This competition is open to youth and adult participants and includes divisions for 4-H, FFA and collegiate teams. The contest ran in the December 2017 issue of *Seedstock EDGE* and on *nationalswine.com* with entries due Feb. 1, 2018. Here are this year's official results and reasons.

**Ties were broken based on individual class scores, beginning with the most difficult class or the class with the lowest sum of cuts.*

College Individual Division (103 Contestants) 500 Points Possible

1st Place Total Score: 474
Adam Gradert • Geneseo • IL

2nd Place Total Score: 466
Hunter Langhoff • Wisconsin Rapids • WI

3rd Place Total Score: 462
Blake Hennenfent • Gilson • IL

4th (*Tie Breaker) Place Total Score: 461
Tyler Largent • Lubbock • TX

5th (*Tie Breaker) Place Total Score: 461
Caleb Meyers • Delphi • IN

Junior Individual Division (221 Contestants) 500 Points Possible

1st Place Total Score: 466
John Wetovick • Fullerton • NE

2nd Place Total Score: 463
Hailey VanOpdorp • Geneseo • IL

3rd Place Total Score: 462
Kristin VanDevelde • Galva • IL

4th (*Tie Breaker) Place Total Score: 461
Jaidyn Miller • Sheffield • IL

5th (*Tie Breaker) Place Total Score: 461
T.J. Dubas • Fullerton • NE

Adult Individual Division (60 Contestants) 500 Points Possible

1st Place Total Score: 466
Jeff Ellerbrock • Atkinson • IL

2nd Place Total Score: 464
Robert Palmer • Galva • IL

3rd Place Total Score: 463
Cole Johnston • Springfield • MO

4th (*Tie Breaker) Place Total Score: 462
Bruce Johnson • Minneapolis • MN

5th (*Tie Breaker) Place Total Score: 462
Jon DeClerck • Lubbock • TX

FFA Team Division (32 Teams) 2,000 Points Possible

1st Place Total Score: 1,374
Fullerton FFA #4 • Fullerton, NE:
James Wetovick, John Wetovick,
Kyle Knopick, Kole Prosook

2nd Place Total Score: 1,322
Fullerton FFA #6 • Fullerton, NE:
Garret Malander, T.J. Dubas,
Elijah Norman, James Lesiak

3rd Place Total Score: 1,313
Lil' Piggies FFA • Fullerton, NE:
Hunter Haughton, Kaleb Dudek,
Brea Heeren, Hanna Plumbtree

4th Place Total Score: 1,304
Fullerton FFA #1 • Fullerton, NE:
Tres Gosiner, Trey Dodds,
Ty Egnel, Isaak Norman

5th Place Total Score: 1,302
Broadwater FFA #1 • Townsend, MT:
Lainee Hill, Abby Leachman,
Kadyn Braaten, Trenton Braaten

4-H Team Division (12 Teams) 2,000 Points Possible

1st Place Total Score: 1,375
Henry-Stark 4-H #1 • Galva, IL
Hailey VanOpdorp, Nicole Haverback,
Cole Ellerbrock, Josh Dobbels

2nd Place Total Score: 1,369
Henry-Stark 4-H #2 • Galva, IL
Grace Versluys, Tyson McVicker,
Jaidyn Miller, Kasha Ellerbrock

3rd Place Total Score: 1,367
Team Sprike 4-H • IL/IN:
Olivia Shike, Makayla Spray,
Keegan Spray, Hunter Shike

4th Place Total Score: 1,316
Boone County 4-H #3 • Capron, IL:
Anna Johnson, Tyler Lee, Morgan
Richardson, Emma Richardson

5th Place Total Score: 1,305
Boone County 4-H #2 • Capron, IL:
Kendall Boatman, Brooklyn Tice,
Chloe Gustafson, Piper Rousch

College Team Division (19 Teams) 2,500 Points Possible

1st Place Total Score: 1,842
Black Hawk East College #1 • Galva, IL:
Adam Gradert, Morgan Carrick, Devon
Boyer, Brittany Luttrell, Blake Hennenfent

2nd Place Total Score: 1,810
Black Hawk East College #2 • Galva, IL:
Lucas Wisniewski, Aleck Main,
Cassie Perrin, Emily Schulz, Tiffany Tomlin

3rd Place Total Score: 1,805
Black Hawk East College #4 • Galva, IL:
Bailey Sigrist, Kylee Meyers,
Hanna Peterson, Justin Slabaugh,
Adam Parker

4th Place Total Score: 1,804
Texas Tech University Black • Lubbock, TX:
Mary Moening, Tyler Largent,
DeLaney Hanagan, Trace McBride,
Mitchell Layfield

5th Place Total Score: 1,795
Black Hawk East College #5 • Galva, IL:
Cole Whisman, Robert Scholl, Daniel Walsh,
McKenzy Wolfe, Brad Johnson

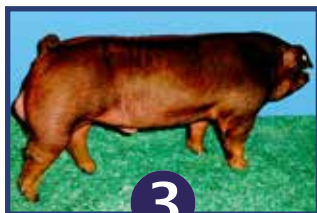
Class 1 – Duroc Boars Scenario: Rank these boars as they would be utilized in a commercial operation to generate potential terminal sires to be marketed to international clientele.



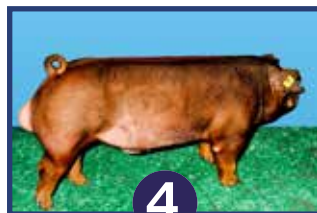
EPDs: -3.1 DAYS, 0.00 BF, +1.25 LBS, 132 TSI



EPDs: -3.5 DAYS, +0.01 BF, +1.34 LBS, 140 TSI



EPDs: -2.8 DAYS, -0.04 BF, +1.09 LBS, 125 TSI



EPDs: -3.0 DAYS, -0.01 BF, +1.26 LBS, 133 TSI

Official Placing: 2-1-3-4 • Cuts: 2-5-4 • Reasons: Kyle Baade, Neb.

Kicking things off for this year's Picture Judging Contest was a really good class of Duroc boars to be ranked as they would be utilized in a commercial setting to generate terminal sires to be marketed to international clientele. We felt it came down to a close top pair that differs slightly in what they can bring to the table followed by a logical third and fourth place and align the class 2-1-3-4. As you study the data combined with the pictures, 1 and 2 surface to the top with better overall balance and slight advantages in their respective EPDs. We felt from a design standpoint the 2 hog is longer cannoned, taller at the point of his shoulder and more extended in a bigger package. With the subsequent data, we felt the resulting progeny should have the narrow advantage in higher performing hogs.

He's followed closely by 1, who has his own advantages in adequate rib, bone work and width of skeleton. The impressive data figures don't go unnoticed on 1, and his look of phenotypic balance and depth of body goes hand in hand with data that make him the kind of hog that meets the expectations of a branded, high-end meat product, combined with greater size and dimension to his forearm. Ultimately, it's this combination of data and balance that wins in the intermediate decision.

3 slides into third convincingly for us, whether you let data lead the way or opt to place more emphasis on his phenotype. 3 looks to be straighter in his rear hock and lacks the balance and design found in our top pair of Duroc boars. His data fits the poorest for the given

scenario and is a comfortable third.

In discussing the bottom pair of hogs we felt it logical to side with the longer boned, more extended 3 hog. He's more than adequate in the depth to his forerib, but where he distances himself is overall frame and extension on the profile. We do see that 4 is slightly heavier boned and has some advantages in the given EPDs and data categories. However, the lighter colored 4 boar is shorter about his cannon, quicker fronted and much more conservative in his type and kind leaving him 4th. Overall an extremely high-quality set of Duroc boars that fit the scenario and command a final placing of 2-1-3-4 with cuts of 2-5-4.



OFFICIAL: Kyle Baade • Nebraska

Kyle Baade lives in Plymouth, Nebraska, with his wife, Laura, and their son, Anders, and daughter, Betsy. They own and operate Baade Genetics, a 75-sow operation consisting of Hampshire, Yorkshire, Duroc and crossbred hogs with a primary focus on club pigs and breeding stock. They also run a boar stud marketing semen to both showpig and commercial breeders.

Class 2 – Hampshire Boars Scenario: Rank these boars as they would be utilized on Hampshire and crossbred sows to produce purebred barrows & gilts and crossbred barrows eligible for the Hampshire Sired Class at the World Pork Expo Jr. National.



Official Placing: 1-3-2-4 • Cuts: 7-2-4 • Reasons: Cody Day, Okla.

In this class of Hampshire boars, as a group we felt that given a scenario of making showpigs, 1 surfaced his way to the top spot. He is the most complete and heaviest structured hog. From the side, he studies tall at the point of his shoulder and correct on his feet and legs. To go along with this, he is long and level in his hip. We felt 3 follows 1 given the fact that he is heavy structured and big ribbed boar, but still, he lacks

the overall length of body when compared to 1 and doesn't appear to be as long through his rump and as big of skeleton. However, he does express more overall width and muscle over 1. When it comes to width and dimension, 3 does appear to be more opened up than 2, therefore producing more attractive well balanced showpigs. 2 is long bodied and more extended through his front end but lacking the overall

completeness and heaviness of structure to be in the top pair. 2 is bigger bodied and softer made than 4. We felt 4 rounded out the class, just lacking the rib and body of the top trio. 4 does appear to be taller at the point of his shoulder than 2 and heavier boned. However, with that said, 4 appears to be straighter through his shoulder and shorter through his head and neck.

Class 3 – Landrace Boars Scenario: Rank these boars as they would be selected for use in a purebred operation that primarily focuses on producing Landrace females for the purpose of F1 female production.



1

EPDs: +0.36 NBA, -0.20 WTE, 119 MLI



2

EPDs: +0.20 NBA, +0.10 WTE, 108 MLI



3

EPDs: +0.34 NBA, +0.15 WTE, 115 MLI



4

EPDs: +0.40 NBA, -0.22 WTE, 121 MLI

Official Placing: 3-1-4-2 • Cuts: 2-4-8 • Reasons: Taylor Fort, Okla.

The committee felt that the Landrace boars were straight forward. The scenario states that these boars will be used to make Landrace females for the purpose of F1 female production. We saw a pair of boars sort up with regards to progeny function and utility. Between 3 and 1, 3 reads to have a better set to his shoulder and appears level in his hip. He still offers good rib, body and fleshing ability while recording good maternal figures. 1 looks to be the stouter option, and he shows more power and muscle. Furthermore, he

posts the best maternal numbers of the ones that are phenotypically in contention. We just preferred the skeletal outline of 3 over the slight number advantage of 1.

If you only look at the numbers, I am sure you sorted 4 up for his class leading SPI and NBA. We saw 4 as one that offers good muscle dimension and shape. He also reads to be a longer outlined boar that offers the extension and length of neck that people are so in love with. Past that, we saw him to be the frailest built boar of the top three. He also needs to be cleaner in his flank

and set his rear legs with a better angle.

Still, it's not close on bottom. We expect more maternal use in the daughters of 3. 2 is the the least impressive phenotypically with regards to bone, skeletal angles, and maternal projection.



OFFICIAL: Taylor Fort • Oklahoma

Taylor is the owner of Newcastle Genetics. With the help of his family, (Andy, Zoe, Emily, and Ory Forehand) Newcastle Genetics has 125 sows and raises Durocs, Yorks, and Crosses. They market their showpigs to 4-H and FFA kids to show at Southwest majors, NSR events, West Coast state fairs and counties and Midwest state fairs.

Class 4 – Yorkshire Boars Scenario: Rank these boars as they would be purchased by a showpig producer who plans to utilize these Yorkshire boars on his purebred sows to generate gilts for the World Pork Expo Jr. National and National Junior Summer Spectacular.



1



2



3



4

Official Placing: 1-4-3-2 • Cuts: 2-3-6 • Reasons: Wade Hendricks, Ind.

After evaluating this class of Yorkshire boars, the committee found a trio of quality boars and one that sorted himself to the bottom quite easily in our minds. With this being said you have to find boars 1 & 4 and run them to the top. 1 is the logical fault-free hog of the group the offers balance and design. He's a tall shouldered, good skeleton boar that doesn't sacrifice stoutness of feature and boldness of blade and forearm. He is strong in his topline, which ties into a long square hip. 1's correct hip and square hock are additional bonuses that led us to this conclusion. 4 however is bigger backed, more three dimensional about his hip, and has natural shape and eye appeal. When compared

to 1 he is shorter fronted, quicker about his hip, and we would like to set his blade back into his skeleton to make him balance and appear more comfortable.

The middle pair was close where 4's rib shape and muscularity ranks him above 3. 4 is a shapely, stout made hog that is still appealing from the side. 3 however is a unique individual. I really like this one from a masculinity stand point. Stout skulled, broad rim to his nose, huge footed and a stout hind leg. I also admire how deep and good he is about his sternum. 3 is another one that balances from the side and gives us a good design and look. However the committee felt that he was plainer about his muscle, not as

much natural spread on the top side of his skeleton, and flatter about his rib.

In the bottom pair of Yorkshire boars 3's advantage in design and skeletal correctness is an easy reason to run him third. The most logical thing to do is find 2 and sort him to the bottom. We really like this one's extension through is front one third and he is elevated at the point of his shoulder. Unfortunately 2 is the straightest in his angle to his shoulder and hock. He is also the hardest bodied, light structured boar of the group.

Class 5 – Duroc Gilts Scenario: Rank these gilts as replacements in a purebred Duroc operation that places special emphasis on growth and has built a local niche market for high quality pork.



EPDs: -2.5 DAYS, +0.01 IMF, 110 TSI



EPDs: -3.2 DAYS, +0.23 IMF, 118 TSI



EPDs: -2.4 DAYS, -0.01 IMF, 112 TSI



EPDs: -3.5 DAYS, +0.18 IMF, 120 TSI

Official Placing: 4-2-3-1 • Cuts: 6-2-5 • Reasons: Brock Herren, Okla.

Even though quality is widely available in this class, the fastest gaining gilt wins in a dominant fashion. Her structural appeal and undeniable quality instantly captures our attention! Compared directly to 2, she strikes us as the stouter skulled, better footed female that comes with a smoother muscle design. We all agree the high IMF gilt is the heaviest muscled and feel her pigs will be very sought after in the local pork market. We felt 2 was better suited for competition in the middle pair though that we find debatable.

Without considering the focus of the scenario, the choice between 2 and 3 is very challenging. 2 is a stout, wide structured gilt that has as much genuine dimension as any! The thin haired 3 blends all kinds of female quality with a touch more length than 2. After finding their financial focus is directed to a local pork market, we are drawn to 2.

As a committee that likes lower maintenance, independent females, the only option in the final pair is 3 over 1. The better bodied, stouter structured gilt's kind

will better withstand a competitive feeding environment. We like the underline count of 1 and initially her conservative length of body and attractive front end is desirable. It's her lack of dimension that restricts her to 4th, she is just too tight bodied and strikes us as the least productive.



OFFICIAL: Wade Hendricks • Indiana

Wade Hendricks grew up on a small-scale, purebred hog operation in Elwood, Indiana. He attended Iowa State University and graduated with an animal science degree. He currently is a herdsman for Drake Purebred Farms in Cambridge City, Indiana. Wade and his family own 15-purebred Duroc sows where they raise breeding stock and youth projects.

Class 6 – Hampshire Gilts Scenario: Rank these gilts as they would be purchased by a NJSA member who is establishing a herd to compete in the NJSA Premier Breeder program.



Official Placing: 1-3-4-2 • Cuts: 2-2-5 • Reasons: Kyle Baade, Neb.

With the given scenario of a NJSA member establishing a herd to compete in the NJSA Premier Breeder program, this Hampshire gilt drive gives you a competitive trio of females to select from. After some discussion we felt that the 1 gilt was the logical place to start and deem her the combination gilt of the drive. She's tall shouldered, feminine about her head and neck, right in the set to her shoulder, knee and pasterns, level down her topline and functional in the set to her hind leg. She simply puts the most of the best together and wins this class.

The brood sow profiling gilt lands in second, and we label her as such because of the unique pieces she brings to the table. Still one that's attractive through her front end, yet deep about her chest

and body cavity. This soggy made lady is upright on her pasterns and right in the angles to her skeleton as well. Yes, we would like to lengthen her hip out, and comparatively, she isn't as big scaled as the 1 and 4 gilts. However, she's a combination of bulk and body, without sacrificing breed character by having the right composition of shape so we find her in second.

How you interpret a picture makes or breaks where gilt 4 lands in this class. Initially, 4 may seem terribly round out of her hip, and subsequently off with how she handles those rear two. However, upon studying her pieces we felt you need to appreciate her stoutness at the ground and up into her forearm. She's standing on big legs, and is broody and long about her front end all while reading with the right

dimension to her rib and body. Collectively she's bulky while not sacrificing attractiveness up front. We would like to square her hip up and bring that hip in a squarer package and that is why she comes in third out of a really competitive top trio of females.

The 2 gilt rounding out this class is definitely a rawer, muscle-driven hog – bold bladed, and shapely up high with a big hip. However, this added muscle works to her disadvantage body wise. She's harder-sided, shallower hearted and ultimately for us, she's too terminal for a breeding female and rounds out this class a distant fourth with a final placing of 1-3-4-2 with cuts of 2-2-5.

Class 7 – Landrace Gilts Scenario: Rank these gilts as they would be selected as replacements in a large multiplier that utilizes Landrace and Yorkshire genetics as the maternal foundation of their production herds.



1

EPDs: +0.21 NBA, -0.02 WTE, 112 SPI



2

EPDs: +0.27 NBA, -0.01 WTE, 117 SPI



3

EPDs: +0.31 NBA, -0.11 WTE, 119 SPI



4

EPDs: +0.33 NBA, -0.08 WTE, 122 SPI

Official Placing: 4-3-2-1 • Cuts: 5-5-5 • Reasons: Wade Hendricks, Ind.

The committee felt like this was the most straight forward class of the contest, and it is the only class that we completely agreed on. In this class the hogs fit the scenario and you find the best of the best and find gilt 4 to start. This is the combination gilt of the class. Feminine, soft, productive looking, and yet stout. Huge footed, heavy duty skeleton, and yet has three dimensional shape and balance at its finest. 3 however I think is longer and smoother about her hip and rump structure, but you can't lose 4 in the shuffle

because of her build and correctness. The middle pair of gilts 3 dominates 2 still we felt because she is another heavy duty, big ribbed landrace gilt that has an awesome angle to her shoulder and forearm. Her set to hock and hind leg might be the best of any in the class. Now I will admit 2 is taller shouldered and more extended up front. But she gets frailer featured and tighter in her fore-rib when compared to the other two females ahead of her. In the bottom pair of Landrace gilts you still have to keep it simple and use 2

ahead of 1. 2 still has an over whelming advantage in balance and design. She's a female that still has shape and muscle, with depth of body. This class had a really good trio of gilts, but they yet separated themselves out. 1 rounds out this class. 1 is a big cavity, high volume gilt. However, she is the small statured, round gilt of the class, which needs reconstructed where her neck ties into her spine. She is also the gilt that is the most detrimental to the scenario.

Class 8 – Yorkshire Gilts Scenario: Rank these gilts as they would be selected as replacements for a purebred Yorkshire operation that utilizes NSR Type Conference events to market breeding stock.



1



2



3



4

Official Placing: 2-3-4-1 • Cuts: 2-3-7 • Reasons: Taylor Fort, Okla.

The committee agreed this was a nice class of Yorkshire gilts with differences in each gilt. With breeding stock production in mind, we sorted up a nice trio of gilts in 2,3, and 4. Of the three, we read 2 to be the gilt that combines maternal function with the modern show look of power and extension. Here is one that offers true center body dimension. She is a bold bladed gilt that reads to have good muscle shape. She has good set to her angles and is the strongest pasterned. Though she shows a quality underline, we

would prefer to alter her vulva shape. We felt 3 follows our class winner the closest. 3 is a muscular gilt that offers good shape. She is level hiped and appears to have a better hock set than 4. She has a quality underline and appears to have more center body dimension. The pair is close because 4 has a better set to her shoulder and opens up bolder at the top of her blades. As an individual, she reads to have plenty of center body mass, and she has good extension and look ahead of her blades.

We felt that if mated correctly, she offers a lot of potential to generate successful offspring at type conferences. The easiest move is to end the class with 1. She is the plainest made, softest footed, and straightest hocked. We cut the bottom 7.

Class 9 Grand Drive Barrows



1



2



3



4

Official Placing: 1-2-4-3 • Cuts: 3-3-3 • Reasons: Brock Herren, Okla.

Typically a market barrow class is sorted on the basic things like muscle, width and genuine good. In this case, the large majority of those priorities are readily available, so our selection pressure shifts toward minor things. The committee feels this class presents as much challenge as any in the contest! Both barrows on top blend the mass, width and stoutness we are all searching for, so our decision was made from the side. The Duroc barrow blends an extremely sleek front end design with a perfectly proportional look. Indeed the

Hampshire is as dense as any through his blade and center body. It is just the little things from the side that split the pair.

In a middle decision that creates a great deal of debate, once again the Hampshire barrow ultimately wins the pair. He offers a harder-to-create build - meaning his rib is wider, his top is bigger, and his hind leg is more secure. Sure, the Yorkshire appearing barrow is as tall fronted and good necked as any! We all find rib and athleticism very attractive, so we had to keep him in the bottom pair.

Much like this entire class, splitting the two solid white barrows is no easy task! We think the extra foot size and especially stouter rear leg of 4 is a big pair advantage. He is also slightly more attractive from the side. Now the Landrace counters with a rounder rib, squarer hip design, and plenty of muscle dimension. In a class of so much quality, we have to keep a very nice one 4th, and we felt he is just the smallest footed and the least attractive from the side.



OFFICIAL: Brock Herren • Oklahoma

Brock and his wife, Kali own and operate Herren Genetics in Minco, Oklahoma. Their operation focuses on Duroc and crossbred showpigs. Along with managing Herren Genetics, Brock is a showpig specialist for Purina Honor Show Chow. Kali and Brock are expecting their first child, Fisher, in the middle of April.

Class 10 Crossbred Market Hogs



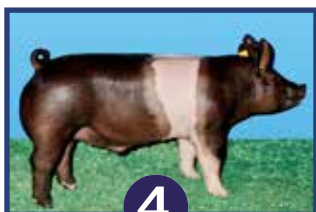
1



2



3



4

Official Placing: 3-2-1-4 • Cuts: 5-2-7 • Reasons: Cody Day, Okla.

As a group, we came to an easy decision to lead off the class with 3. He combines heaviness of structure, while transitioning level down his top and tying correct into his hip. From a flexibility standpoint, he appears to be correct in his joints. 2 followed in a close top pair, with 2 being heavy muscled, bigger skeletoned and

offers more rib than 3. When we compare the middle pair, 2 does seem to have more shape over his top and reads better through his hip than 1, so we kept him second. Certainly, 1 is the heaviest structured and there is no question he offers some extension upfront. However, 1 needs to be better in terms of how he ties in behind his

shoulder and trimmer in his condition. In an easy decision, 4 rounded out the class. 4 was lacking the structure and muscle to compete with the rest of the class. He's the barrow that needs to be more flexible off his rear legs. Ultimately, 4 simply lacks the overall design compared to the top trio.



OFFICIAL: Cody Day • Oklahoma

Cody Day is part owner with his dad, Mike, of Day Farms Hamps. They run 20 Purebred sows consisting of mostly Hampshires and a few Durocs, for NSR Type Conference events and NJSA Junior shows.