

2021 NATIONAL PICTURE JUDGING

Results & Reasons

Sponsored by:



Each year, the National Swine Registry sponsors the National Picture Judging Contest. This competition is open to youth and adult participants and includes divisions for 4-H, FFA and collegiate teams. The contest ran in the November/December 2020 issue of *Seedstock EDGE* and on *nationalswine.com* with entries due February 1, 2021. Here are this year's official results and reasons.

**Ties were broken based on individual class scores, beginning with the most difficult class or the class with the lowest sum of cuts.*

College Individual Division (74 Contestants) 500 Points Possible

1st Place Total Score* (Three-way tie for first. Could not be broken.): **489**

MaKenna Green, Emma Freebairn & Hailey Van Opdorp

2nd (*Tie Breaker) Place Total Score: 489
Adam Doyle

3rd (*Tie Breaker) Place Total Score: 489
Karson Fahey

4th Place Total Score: 488
Ellie Ferretti

5th Place Total Score* (Two-way tie for fifth. Could not be broken.): **463**
Izzy Clouse & Wesley Moore

Junior Individual Division (425 Contestants) 500 Points Possible

1st Place Total Score: 496
Westyn Novotny

2nd Place Total Score: 488
Robert Barnett

3rd (*Tie Breaker) Place Total Score: 485
Wyatt Son

4th (*Tie Breaker) Place Total Score: 485
Caden Kitchens

5th Place Total Score: 484
Erika Mercer

Adult Individual Division (56 Contestants) 500 Points Possible

1st Place Total Score: 490
Tyler Gradert

2nd Place Total Score: 484
Stoney Adams

3rd (*Tie Breaker) Place Total Score: 483
Grant Grebner

4th (*Tie Breaker) Place Total Score: 483
Hayden Wilder

5th Place Total Score: 481
James Dobbels

FFA Team Division (49 Teams) 2,000 Points Possible

1st Place Total Score: 1,448
Kingfisher Gold
Erike Mercer, Dustyn McLean,
Caden Kitchens & Cord Alig

2nd Place Total Score: 1,442
Prague FFA Red
Dillon Cooper, Ryan Hedge
Jayden Mlynek & Ethan Rich

3rd Place Total Score: 1,437
Kingfisher White
Carter Kitchens, Colton Burns, Robert
Barnett & Bode Williams

4th Place Total Score: 1,413
Fair Grove FFA Black
Hannah Morris, Taylor Rode, Lucas
Crutcher & Jacob Hargus

5th Place Total Score: 1,404
HSE Blue
Gracie Fisher, Drew Robertson,
Gracie Cloud & Tony Crane

4-H Team Division (25 Teams) 2,000 Points Possible

1st Place Total Score: 1,362
Carroll County 4-H
Michaela Miller, Scarlett Miller,
Brock Pitt & Kaston Pitt

2nd Place Total Score: 1,357
Team Ziegler
Hannah Ziegler, Kaylyn Ziegler,
Leah Ziegler & Jacob Ziegler

3rd Place Total Score: 1,310
Marion County Purple
Kaley Bloomberg, Landon Borschiding,
Huter Greenwalt & Kayley Lacey

4th Place Total Score: 1,207
Greene PA Hogsters
Allison Pecjak, Garrett Barnes,
Carter Barnes & Morgan Willis

5th Place Total Score: 1,161
Chops & Hocks 1
Bing Zuber, Kara Goodenow, Gia
Zuber & Maggie Winspear

College Team Division (13 Teams) 2,500 Points Possible

1st Place Total Score: 1,956
Lake Land #2
Sheridan Hank, Karson Fahey, Adam Doyle,
Emma Freebairn & MaKenna Green

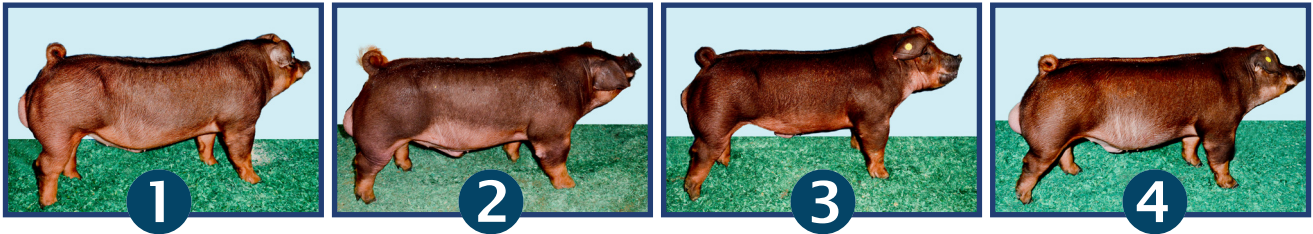
2nd Place Total Score: 1,937
Illinois Central College White
Rylie Melancon, Garrett Rhode, Kate Henkel,
Ellie Ferretti & Izzy Clouse

3rd Place Total Score: 1,931
Illinois Central College Gold
Hailey Van Opdorp, Mia Freyermuth, Luke
Harker, Carson Deppe & Ryan Michael

4th Place Total Score: 1,925
Lake Land #4
Swayer Schlipf, Will Ochs, Jarrett Tharp, Skye
Schumaker & Tanner Mickey

5th Place Total Score: 1,916
Illinois Central College Blue
Olivia Timmons, Regan Fringer, Devin Baker,
Spencer Atkinson & Evan Link

Class 1 – Duroc Boars Scenario: Rank these boars as they should be selected by a purebred Duroc producer. The primary goal of this producer is to generate fast growing market hogs with the end goal of marketing Certified DUROC® Pork to local restaurants and markets. This producer also has a strong custom pork clientele that covets the Certified DUROC® Brand.



Actual Data: 159 DAYS to 250, 7.9 LEA, .86 BF, 109 TSI, 2.3 IMF Actual Data: 150 DAYS to 250, 8.7 LEA, .72 BF, 117 TSI, 4.6 IMF Actual Data: 161 DAYS to 250, 8.2 LEA, .64 BF, 112 TSI, 3.1 IMF Actual Data: 152 DAYS to 250, 8.5 LEA, .70 BF, 115 TSI, 4.2 IMF

Official Placing: 2-4-3-1 • Cuts: 2-5-3 • Reasons: Wade Hendricks, Indiana

The committee places the Duroc Boars 2-4-3-1. After evaluating the first class of the contest, the committee found this to be a straightforward class where you have to find the pair to lead off the class and a pair to round out the class. The top pair is one of extreme quality. 2 is the stout, robust, masculine boar of the class, one that you must appreciate for being three dimensional in every aspect. He is a big-footed, huge-forearmed hog, that has incredible blade shape and rib. 4, however, is the balanced hog of the class, awesome from a skeletal and build standpoint. I admire the looseness

and flexibility this one displays. But at the end of the day, when compared to 2, he lacks the overall mass and stoutness. With this being said, 2 also gets the nod for being the best fit for the scenario when it comes to producing quality Duroc pork. In the middle pair of boars, 4 dominates 3 in sheer balance and design. 4 is just the no- holes, problem free one that still beats out 3 in all actual data given. I really like 4 in terms of length of front end and comfort. 3 may appear to be stouter skulled, with a more shapely and trim look. But lacks the overall skeletal integrity, and this makes him

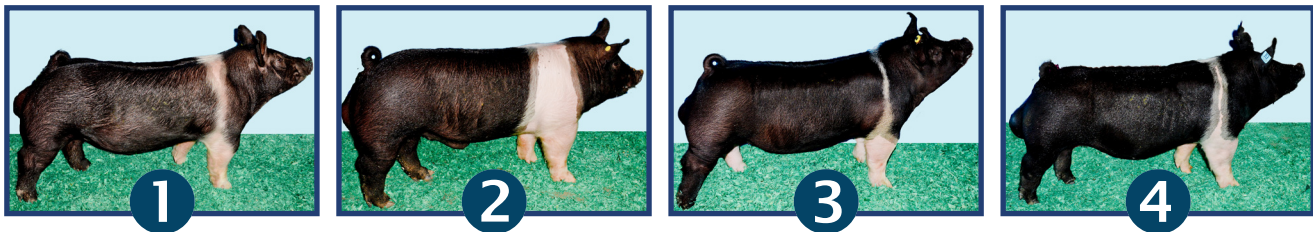
appear smaller in his stature and round. The bottom pair gets closer but 3's sheer stoutness of skull, forearm, and foot seals the deal. His features and true muscle shape is enough for me to put him over 1. 1, however, is longer fronted, bigger bodied, and faster growing. I do like his advantage of length, especially when we are talking about making productive market hogs. But, at the end of the day he is the frailest, the flattest bodied, and has the most detrimental data for the given scenario.



OFFICIAL: Wade Hendricks • Indiana

Wade Hendricks grew up on a purebred swine operation in Indiana. He attended Iowa State University where he obtained a bachelor's degree in animal science. He is currently a herdsman at Drake Purebred Farms in Cambridge City, Indiana. Wade also runs approximately 15 Duroc sows where the focus is raising breeding stock and showpigs. Wade currently serves as the Vice President of the NSR Duroc Board of Directors.

Class 2 – Hampshire Boars Scenario: Rank these boars as they should be selected by a breeder for the use on both purebred Hampshire and Yorkshire sows. Elite purebred and crossbred offspring will be marketed as junior projects. In order to improve the sow herd and other purebred herds, a select group will either be retained as replacements or marketed through Type Conferences.



Official Placing: 3-1-4-2 • Cuts: 2-2-6 • Reasons: Kyle Pullen, Indiana

The official placing of the Hampshire Boars is 3-1-4-2. You will find a top trio of quality boars where 3 simply offers the best build, skeletal angles, and balance from the side profile. He is the stoutest in his forearm and the biggest footed and heaviest boned boar of the class. In terms of siring Hampshire females and making F1 crossbreds, he ties the most together for his daughters to be successful in the ring at Louisville or in the farrowing crate. No doubt that 1 is longer necked and trendier

headed, but he sorts into second as he doesn't have the overall density and mass as the class winner. The 1 boar is tall shouldered and attractive from the side, appearing to be a well-structured, good-built boar that is opened up in his forerib, allowing him to sire flashy show hogs. I do like 4's heaviness of structure, stoutness on the top side of his skeleton, and he has a bold, opened-up rib cage with plenty of mass and volume. He fits well into the top trio of quality boars;

but, unfortunately, he's a notch lower fronted and doesn't blend as attractively down his top line. In an easy decision to place 4 over 2, 4 simply offers more quality from a build and power standpoint. Sure, 2 offers a ton of bone and hip shape, but he is the off-balanced, short-necked, short-hipped, steep hipped boar that reads incorrect in his skeleton.

OFFICIAL: Kyle Pullen • Indiana

Kyle Pullen lives in Indiana where he, his wife, Lynsee, and their two sons own and operate Pullen Showpigs. Kyle grew up showing competitively at the local, state, and national levels. He has judged shows at all levels across the country. Kyle currently serves on the Indiana Duroc Association Board. Kyle and Lynsee are also co-owners of Walton Webcasting and are very involved with the NSR and NJSA.



Class 3 – Landrace Boars Scenario: Rank these boars as they should be selected by a commercial hog producer with the intention of mating them to Yorkshire sows. The primary goal of this mating is to retain as many F1 white line females as possible while also generating productive market hogs that will perform well on the finishing floor.



EPDs: +.35 NBA, +1.9 LWT, 121 MLI



EPDs: +.40 NBA, +4.1 LWT, 125 MLI



EPDs: +.42 NBA, +3.9 LWT, 126 MLI



EPDs: +.30 NBA, +3.0 LWT, 118 MLI

Official Placing: 3-2-1-4 • Cuts: 2-4-4 • Reasons: Will Taylor, Indiana

The official committee thought the Landrace Boars were a great class. We opted to write them 3-2-1-4 and cut them 2-4-4. The 3 boar is a powerful, stout option that can complement Yorkshire sows with his muscle and shape. He’s better at the top of his neck and longer in his hip. I think his maternal length will

be a great complement to Yorkshire sows. Now 2 has more shape to his forearm with a great shape to his body; but I think he gets a little more limited in his hock and hind leg. Yet in the middle he’s still the highly presented boar that has great maternal genetics and a plenty functional build. 2 has the ability to keep skeleton

and presence in check, but I’m worried that he won’t provide anything that isn’t already inherent in the herd. On bottom he’ll still keep his offspring’s skeleton right, and I’m more confident in his build holding up. 4 certainly is long and extended, but his build concerns me for getting the right kind of maternal look into Yorkshire sows.



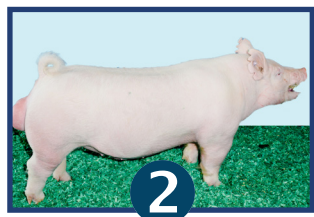
OFFICIAL: Will Taylor • Indiana

Will Taylor is currently a Ph.D. student at Iowa State University where he is also the assistant livestock judging coach. Will grew up showing pigs in Indiana and later judged livestock while attending Lincoln Land Community College and Western Illinois University. Will is also a former NSR Field Staff Intern and has judged shows at the local, state and national levels.

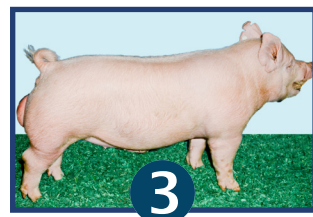
Class 4 – Yorkshire Boars Scenario: Rank these boars as they should be selected by a boar stud owner looking to expand their Yorkshire boar battery. The primary purpose of selected boars will be to generate junior barrow and gilt projects throughout the country. However, this boar stud also services a clientele base of purebred operations that raise Yorkshire seedstock.



1



2



3



4

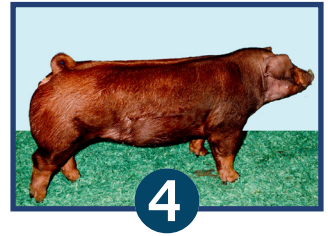
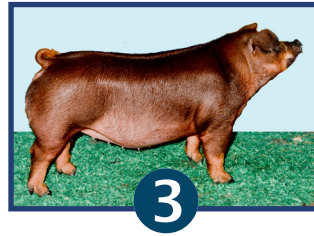
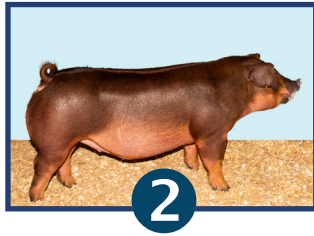
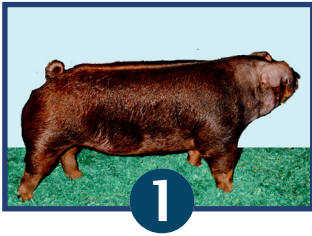
Official Placing: 1-2-4-3 • Cuts: 2-2-5 • Reasons: Will Taylor, Indiana

We liked the Yorkshire Boars 1-2-4-3 with cuts of 2-2-5. The do-it-all boar that can generate the most interest is absolutely 1. Feature, shape, design, and look are incredible on that hog. Now you’re going to have to protect his ham loin, but that slight issue isn’t enough to pass on his feature and shape that’s laid on that wildly

good skeleton. I like 2’s softness and pliability. But to me he’ll need the sow to bring the look. Yet the middle pair needs taken to sows that look totally different. In my opinion, 2 can make the more elite set of junior gilts. His soft body and quality angles read like he’ll make gilts with the comfortable maternal proportion. I’m way

more excited about generating a neat set of barrows with 4. I love the opportunity he represents in terms of making wild-looking males, but his breeding value keeps him off bottom. 3 covers the seedstock basics and has elevation; but, in my opinion, he’s the poorest built.

Class 5 – Duroc Gilts Scenario: Rank these gilts as they should be selected as replacements in a purebred operation that utilizes Type Conferences to market elite seedstock and also profits from selling junior barrow and gilt projects.



Official Placing: 3-2-4-1 • Cuts: 2-6-3 • Reasons: Kyle Pullen, Indiana

The official placing of the Duroc Gilts is 3-2-4-1 with a very high-quality pair of females that combine an elite show ring look with plenty of sow power to lead off with.

3 is a well-balanced, deep-bodied female that reads correct in her angles with plenty of density at the ground. She is the stout, forearmed gilt that is big bladed and bold in her upper rib and still ties it all together on a sound and functional skeleton. This is the kind of female to retain into the herd

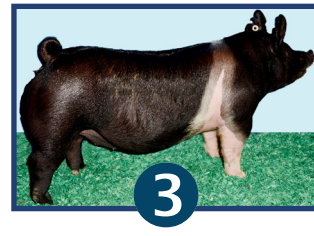
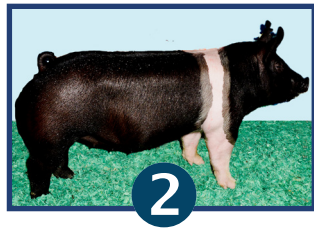
and feed some of her offspring that will get along in the show ring. There's no doubt 2 has the trendy jaw line, but 2 doesn't have the substance at the ground to get around 3 in a close top pair.

In the middle pair it sorts 2-4 easily. 2 is the long sided, level-made gilt with tons of extension. She is much better designed, correct in her angles, and appears to be sounder structured. 2 will have much more longevity in the sow lot to make elite show pigs because of her design, balance, and

build. Sure, 4 is level in her topline and has some extension but doesn't have near enough balance or horsepower to get around 2.

To round out the class, it goes 4-1. 4's levelness of design, extension up front, and squareness out of her hip allows her to get around the 1 gilt. No question 1 has a deeper forerib and plenty of center body, but she is the over-conditioned gilt that is forward in her shoulder, straight in her knee, and the steepest out of her hip.

Class 6 – Hampshire Gilts Scenario: Rank these gilts to be utilize by a progressive purebred breeder. Top replacements will be bred to Hampshire boars to produce seedstock that will be marketed at national shows and sales. Other females will be bred exotic to produce showpigs for local clientele.



Official Placing: 3-4-2-1 • Cuts: 2-2-2 • Reasons: Lukas Ziegler, Indiana

I sorted the Hampshire Gilts 3-4-2-1. In an elite lineup the 3 gilt still stands out as the most massive and highest quality, its ¾ to start. The biggest-chested, boldest-bladed gilt opens back into the most massive and pliable ribcage. It's so impressive that she can still handle it at the surface! But she's not just a power hog because from the side, the heads-up, tall-bladed female instantly grabs my attention. Mated correctly this one will help the program make a big jump. Taking nothing away

from 4 because she's still so dynamic from the side. She's actually the tallest fronted and so youthful and feminine up front. But compared back to a great one, she's straighter fronted and comparatively flatter made, so I left the good looking one second.

I'll still side with her elite look and hard muscle shape and keep her over 2 in the middle. Sure, the fresh-skinned 2 turns a more impressive shape to her forerib and plants off of a stouter hind leg. But at the

same time she runs downhill and is the shortest and steepest out of her hip, so I rolled her into third.

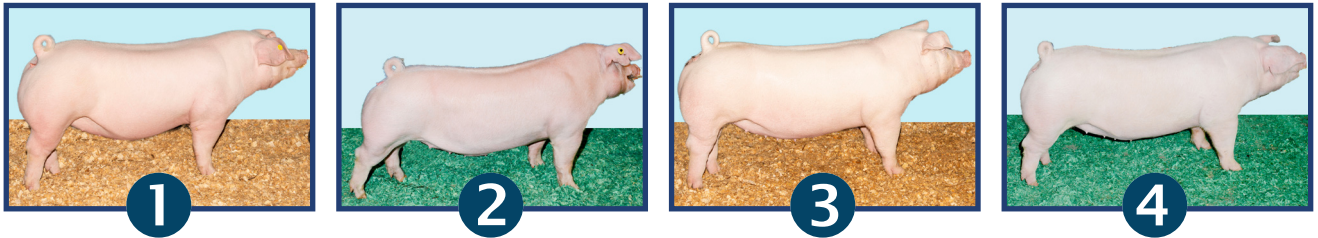
Despite this I still went 2/1 on bottom because the more youthful appearing gilt stayed more consistent in her topline. Now 1 is a testament to how deep this class is! Ultra-broody and functional in her skeleton, this one should make an awesome sow prospect. But in such an elite lineup she's the plainest in her appearance and just doesn't balance up, so I'll leave her fourth.



OFFICIAL: Lukas Ziegler • Indiana

Lukas Ziegler grew up raising and showing livestock in Maryland. He attended Texas Tech University where he was a member of the 2015 National Champion Livestock Judging Team. Following graduation, Lukas was the assistant livestock judging coach at Clarendon College. Lukas most recently served as the Northwest Region Field Representative for the National Swine Registry. He currently lives in Indiana and works for the Indiana State Fair as the Livestock Director.

Class 7 – Landrace Gilts Scenario: Rank these gilts as they should be selected by an NJSA member to purchase through a Type Conference Sale. The primary goal with these females will be to breed them with the intention of producing high caliber show gilts to exhibit in the Bred-and-Owned division at NJSA events.



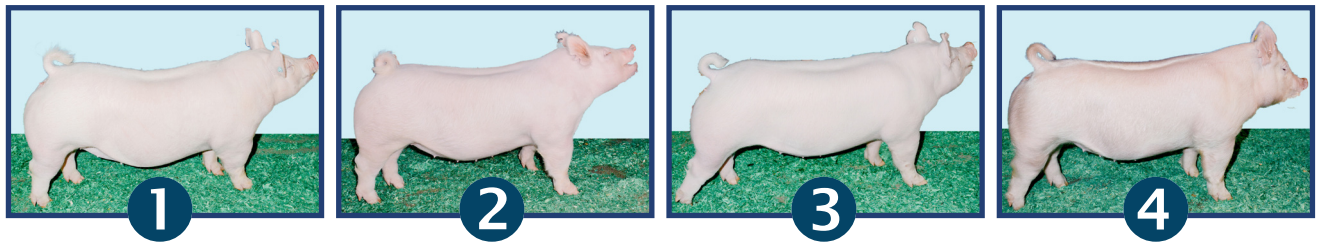
Official Placing: 1-4-3-2 • Cuts: 2-3-5 • Reasons: Wade Hendricks, Indiana

We placed the Landrace Gilts 1-4-3-2, a unique class in these Landrace females. It's one with many different shapes and sizes, which I find interesting when we go to line this class up. There, however, is one female that I think must lead off and that's 1. She's a stout-made, loose-skeletoned, big-bodied one, that screams female. I dig this one's length of front end and maintaining that stout yet feminine look. Balance and design make this one a standout. It gets close, however, with gilt 4 having a huge cavity and natural shape and dimension.

4 I believe is more opened up through her blade and center portion of her body. However, 1 puts it all together in a bigger, more extended stature. 4 and 3 are close and similar in the middle pair. 4's added advantage of foot size, forearm, and dimension gives her the nod in securing the second position. I do admire 3 for being a big-bodied, shapely female, that looks to have a level and strong top line. However, 3 lacks that comfort and flex to her hock that 4 does with ease, and 3 is the worst when it comes

to breed characteristics. In the bottom pair, 3 is over 2 because she follows suit of our stouter, more three-dimensional gilts that we lead the class with. I do admire 2 for many things. Her breed character is awesome. I really like the heavy ear and extra length of body and extension she has to offer. Looks like a Landrace, but in reality, she is the frailest and lacks the proportions of the trio ahead of her. A very good class to sort and talk!

Class 8 – Yorkshire Gilts Scenario: Rank these gilts as potential replacements within a purebred seedstock operation focusing on the sale of premier gilts and boars at Type Conferences. Additional revenue is generated from the sale of elite junior barrows and gilts.



EPDs: +.32 NBA, 111 MLI, 115 SPI

EPDs: +.30 NBA, 109 MLI, 113 SPI

EPDs: +.28 NBA, 107 MLI, 112 SPI

EPDs: +.24 NBA, 105 MLI, 108 SPI

Official Placing: 2-1-3-4 • Cuts: 3-4-3 • Reasons: Lukas Ziegler, Indiana

I sorted the Yorkshire Gilts 2-1-3-4. Big picture, the wider-made, bolder-bodied gilts sort up. I like my York's a notch stouter, especially when they pair it with a quality look from the side. I'll mark it 2/1 up top. Study them at the ground and 2's the bigger-footed, wider-toed gilt that plants off a stouter hind leg and yet reads correct in her angles and clean in her joint work. From the side she only separates herself as the stouter-skulled option, is taller at the top of her blade and cleaner about her jawline. Now I have no doubt 1 will make a killer sow in production. She's without question the boldest-ribbed

widest-made female that reads ultra-functional in her build. I'm confident that her fleshing ability will help her recycle post weaning. But it's the little things that put her second. She's the plainer-fronted female that needs to be cleaned up through her lower body, so I left a good one in second. Still it's a quick 1/3 mark in the middle. She's not only higher quality and better balanced, but she's stouter and more dimensional from every angle! Sure 3 has some pieces to breed on; she's clearly more extended up front, feminine in her look and has a high-quality underline.

At the same time, the frailest-structured female is too upright in the angle of her hock. Pair that with an unattractive slope to her hip and she could be picked up in her pasterns; I'll leave her a distant third. But I'll still go ¾ on bottom because I've got more faith in the longer-hipped female with a more functional slope to her hip to cause less issues come farrowing season. Sure 4's the stouter-featured, denser-made gilt that's more impressive for muscle shape. I just read her to be a notch too terminal. She's tighter made, shorter hipped and rocked forward in her blade, so I'll leave the breeding piece fourth.

Class 9 Grand Drive Barrows



1



2



3



4

Official Placing: 3-4-1-2 • Cuts: 4-7-2 • Reasons: Will Taylor, Indiana

We opted to write the Grand Drive Barrows 3-4-1-2 with cuts of 4-7-2. We thought the top pair sorted up quickly and the Yorkshire does the most interesting things in that pair. Huge legged, perfect proportions with an unbelievable

muscularity and skeleton. Now the Duroc does some very good things, but he isn't on the level that the York is. We didn't debate the middle. The Duroc still has elevation, muscle, and pliability. That's a very fundamental market hog that still has

neat pieces. Then on bottom, at least the Landrace has body. Now the Hampshire is long but he needs to be stronger in his spine and relaxed in his blade, and he still doesn't have muscle.

Class 10 Crossbred Market Hogs



1



2



3



4

Official Placing: 4-1-3-2 • Cuts: 5-3-3 • Reasons: Lukas Ziegler, Indiana

I liked the Crossbred Market Hogs 4-1-3-2. Total muscle mass sorts this drive to pairs. Up top, I sided with 4's elite look and edge in skeletal quality. That's why I used him over 1.

4 hits the mark for the balanced look I'm after. Here's the longer, leveler-hipped hog that's the absolute stoutest and most attractive in his hind leg, and he stays more relaxed in his knee up front. Now a true carcass hog drives second. 1 is the heaviest muscled, particularly right out of the backside of his blade and through his lower ham. He's extremely opened up in his chest and powerful in his forearm. I leaned to his potential cutout value at

first. But structurally I'm bothered that he's tilted forward in his blade, and from the side he needs to hook up better in his neck attachment. I kept the carcass hog second. Still, I definitely like 1 over 3 in the middle pair since he's just a more productive market hog. He's heavier weight, bolder centered, and more coordinated in his rear leg travel. He should still hang a heavier weight and shapelier carcass at the rail. When the barrows drive at me, 4's as impressive as any. This youthful, clean-jawed barrow is tremendously opened up in his chest floor and square from there down. His problems are from there back. He gives up mass down his top and

through his center. The plainer-muscled hog's third. Even so, I kept 3 over 2 on bottom. I don't like his kind, but it's just way too obvious that 4's by some margin wider and heavier muscled. Now the calico barrow I've got fourth is clearly later maturing and has more appropriate barrow proportions. He's actually the leaner-made hog that has the edge for muscle shape. But he's still tight on his back pasterns and fragile footed. The narrow-skulled hog is outmatched for power. I rolled him fourth.